

PID NO. 19686

R/W DESIGNER R/W REVIEWER

CENTERLINE PLAT

LAK-20-18.72

5/5

5/87

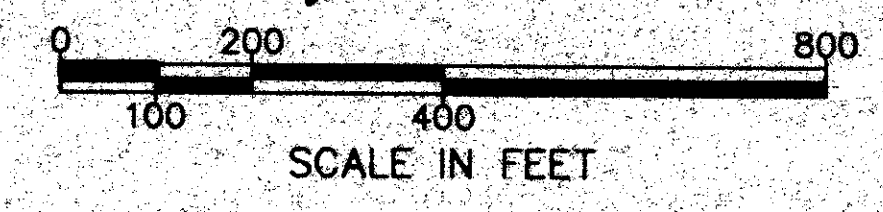
359/441

CENTERLINE SURVEY PLAT

LAK - 20 - 18.72

MADISON TWP. LAKE COUNTY

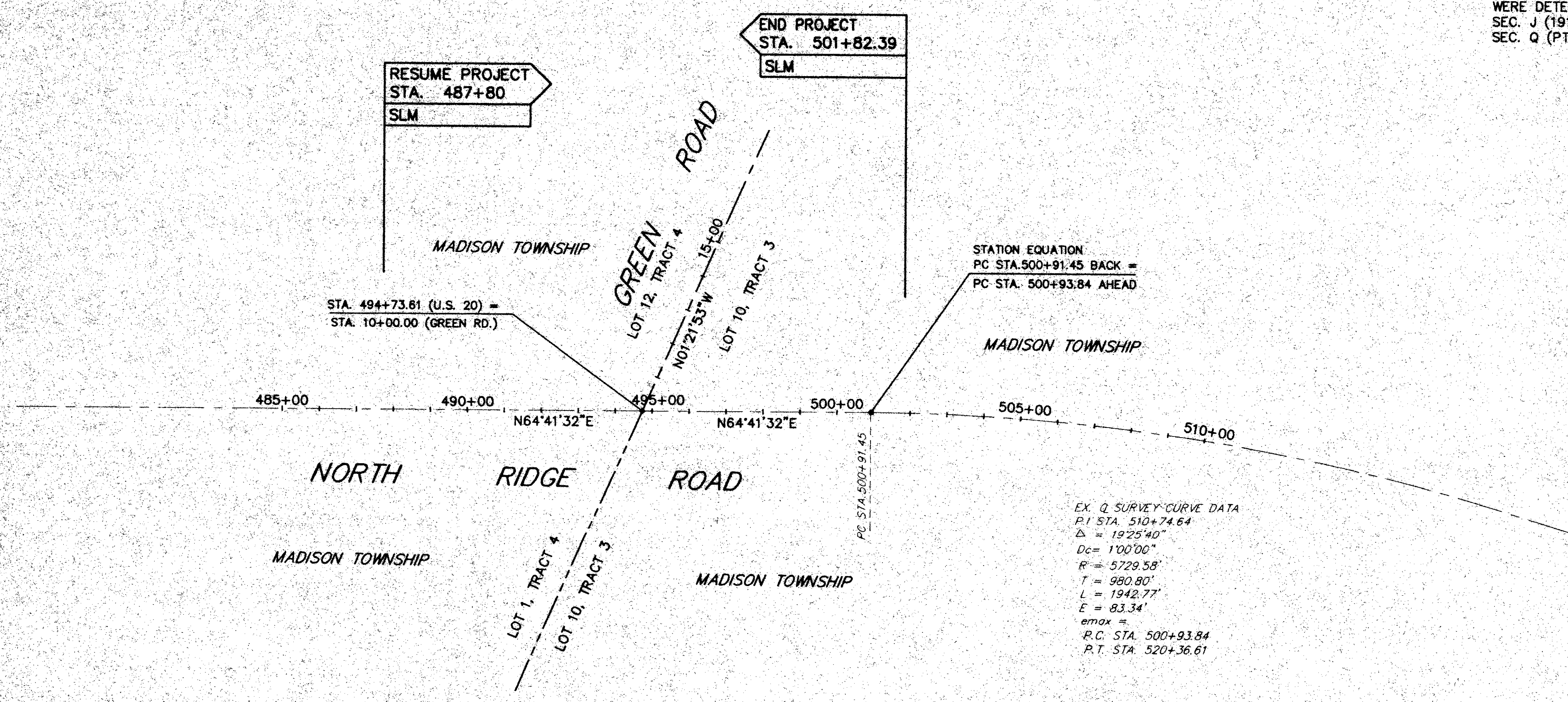
T=11N, R=7W & 8W



MONUMENTS TO BE (◆) SET DURING CONSTRUCTION			
STATION	DISTANCE FROM C. SUR.		REFERENCE MONUMENT
	LEFT	RIGHT	
494+73.61	0	1	GREEN RD. C.
500+91.45 (BACK)	0	1	P.C.
TOTALS		2	

MONUMENT LEGEND
 ◆ PROP. MON. ASSEMBLY
 ◇ EX. I.P. MON. FND.

NOTE: THE EXISTING RIGHT OF WAY WIDTH AND LOCATION WERE DETERMINED USING O.D.O.T. PLANS I.C.H. NO. 2 SEC. J (1918), S.H. 2 SEC. J (PT.) (1938) AND S.H. 2 SEC. Q (PT.) (1940).



EX. Q. SURVEY CURVE DATA
 P.I. STA. 510+74.64
 $\Delta = 192^{\circ}40'$
 $D_c = 100'00''$
 $R = 5729.58'$
 $T = 980.80'$
 $L = 1942.77'$
 $E = 83.34'$
 $e_{max} =$
 P.C. STA. 500+93.84
 P.T. STA. 520+36.61

I:\PROJECTS\1820343\Dgn\Plat\pr\inf.dgn 07-JAN-2003 3:50PM dlastovk