

PID NO. 19686

R/W DESIGNER
R/W REVIEWER

CENTERLINE PLAT

LAK-20-18.72

2/5

2/87

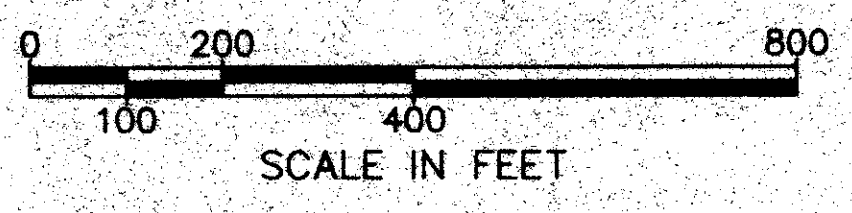
356
441

CENTERLINE SURVEY PLAT

LAK - 20 - 18.72

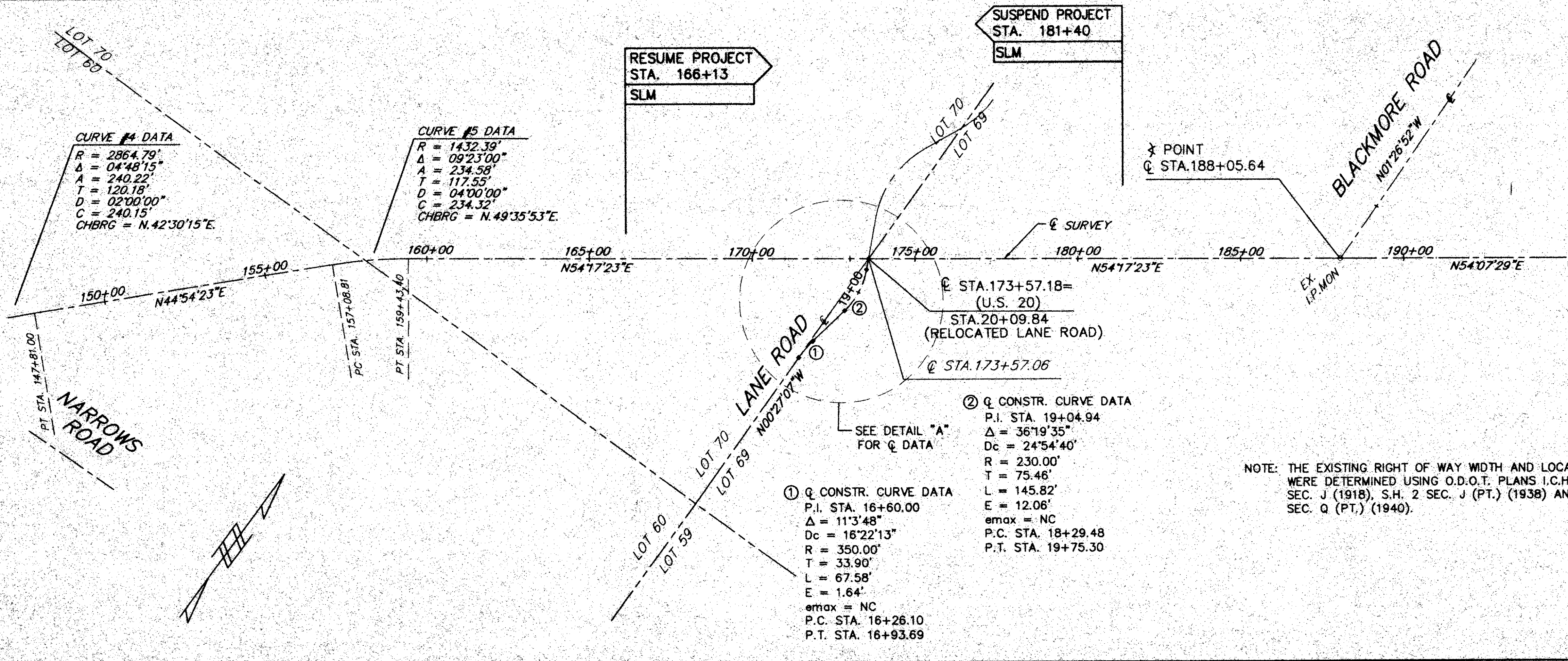
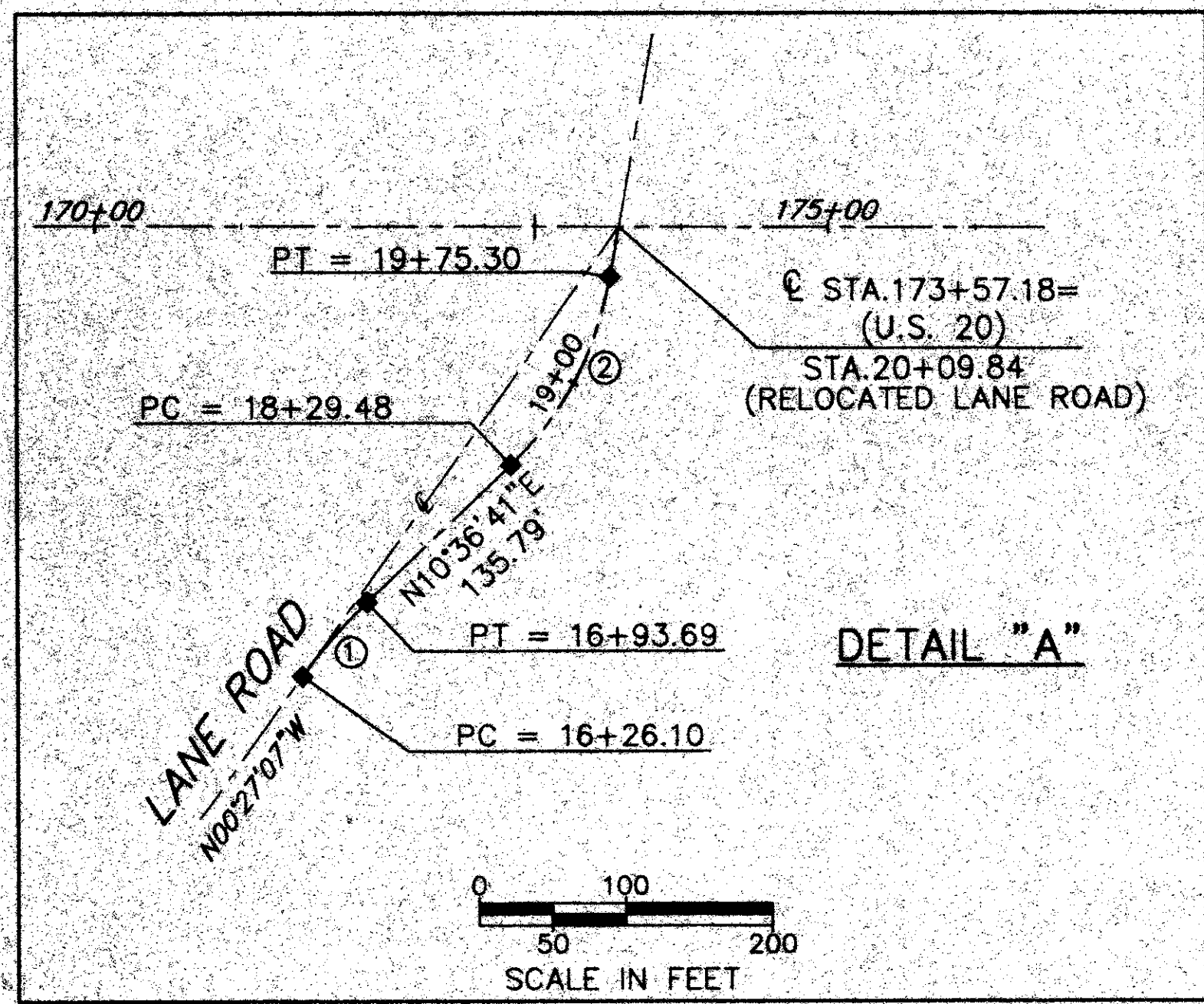
PERRY TWP., LAKE COUNTY

T=11N, R=7W & 8W



MONUMENTS TO BE (◆) SET DURING CONSTRUCTION				
STATION	DISTANCE FROM C. SUR.		ADJUSTABLE C. MONUMENT	REFERENCE MONUMENT
	LEFT	RIGHT		
173+57.18		0	1	
16+26.10	P.C. C. RELOC. LANE	0	1	
16+93.69	P.T. C. RELOC. LANE	0	1	
18+29.48	P.C. C. RELOC. LANE	0	1	
19+75.30	P.T. C. RELOC. LANE	0	1	
TOTALS			5	

MONUMENT LEGEND
 ◆ PROP. MON. ASSEMBLY
 ◇ EX. I.P. MON. FND.



- ① Q CONSTR. CURVE DATA
 P.I. STA. 16+60.00
 $\Delta = 11^{\circ}3'48''$
 $D_c = 16^{\circ}22'13''$
 $R = 350.00'$
 $T = 33.90'$
 $L = 67.58'$
 $E = 1.64'$
 $e_{max} = NC$
 P.C. STA. 16+26.10
 P.T. STA. 16+93.69
- ② Q CONSTR. CURVE DATA
 P.I. STA. 19+04.94
 $\Delta = 36^{\circ}19'35''$
 $D_c = 24^{\circ}54'40''$
 $R = 230.00'$
 $T = 75.46'$
 $L = 145.82'$
 $E = 12.06'$
 $e_{max} = NC$
 P.C. STA. 18+29.48
 P.T. STA. 19+75.30

NOTE: THE EXISTING RIGHT OF WAY WIDTH AND LOCATION WERE DETERMINED USING O.D.O.T. PLANS I.C.H. NO. 2 SEC. J (1918), S.H. 2 SEC. J (PT.) (1938) AND S.H. 2 SEC. Q (PT.) (1940).

I:\PROJECTS\1820343\Dgn\Plat\pr\Int.dgn 07-JAN-2003 3:49PM diastovk