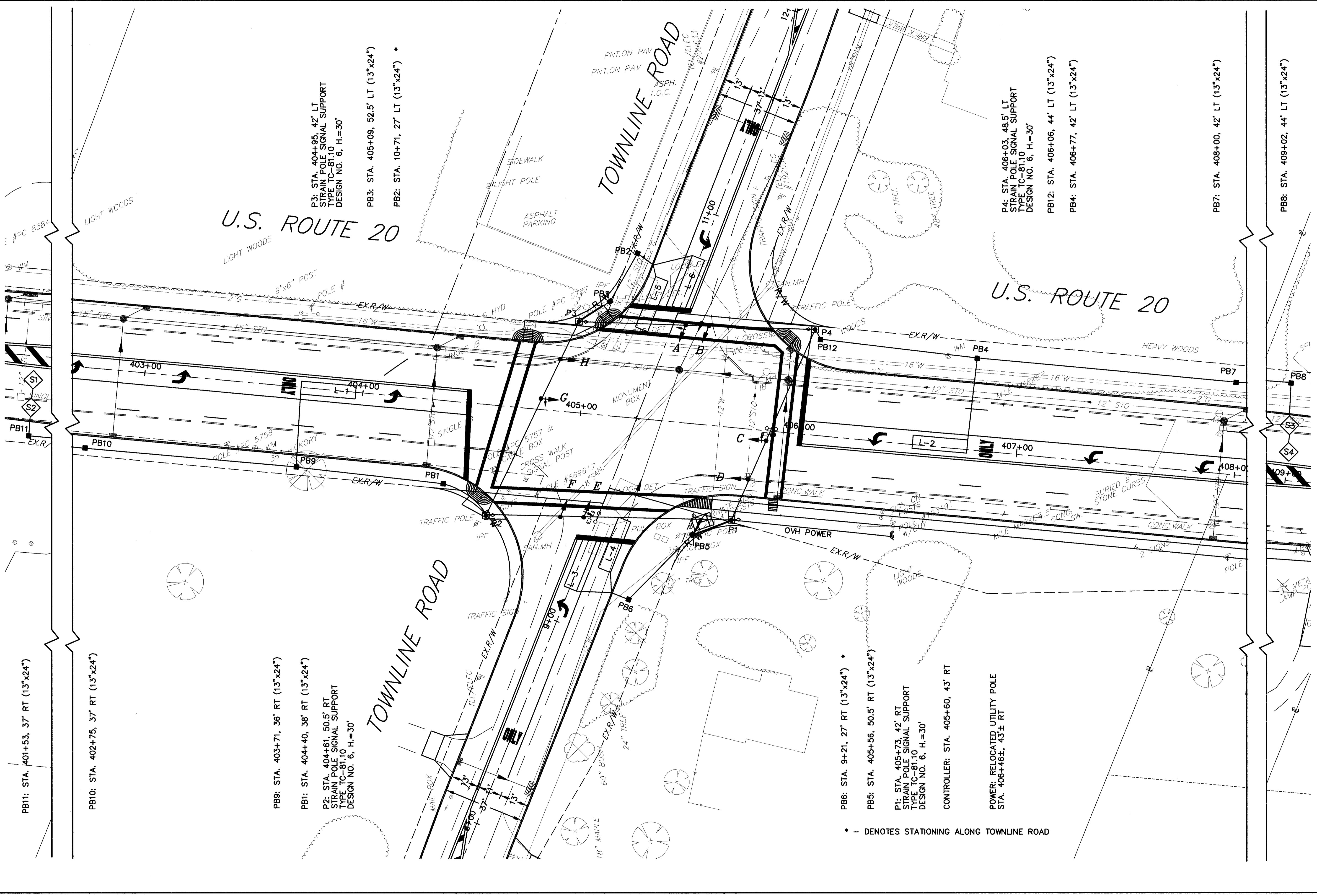


DATE: 10-04-02 - H:\1998\98404.DWG\98404T04.DWG



PB11: STA. 401+53, 37' RT (13"x24")

PB10: STA. 402+75, 37' RT (13"x24")

PB9: STA. 403+71, 36' RT (13"x24")

PB1: STA. 404+40, 38' RT (13"x24")

P2: STA. 404+61, 50.5' RT
STRAIN POLE SIGNAL SUPPORT
TYPE TC-81.10
DESIGN NO. 6, H.=30'

P3: STA. 404+95, 42' LT
STRAIN POLE SIGNAL SUPPORT
TYPE TC-81.10
DESIGN NO. 6, H.=30'

PB3: STA. 405+09, 52.5' LT (13"x24")

PB2: STA. 10+71, 27' LT (13"x24") *

PB6: STA. 9+21, 27' RT (13"x24") *

PB5: STA. 405+56, 50.5' RT (13"x24") *

P1: STA. 405+73, 42' RT
STRAIN POLE SIGNAL SUPPORT
TYPE TC-81.10
DESIGN NO. 6, H.=30'

CONTROLLER: STA. 405+60, 43' RT

POWER: RELOCATED UTILITY POLE
STA. 406+46±, 43± RT

P4: STA. 406+03, 48.5' LT
STRAIN POLE SIGNAL SUPPORT
TYPE TC-81.10
DESIGN NO. 6, H.=30'

PB12: STA. 406+06, 44' LT (13"x24")

PB4: STA. 406+77, 42' LT (13"x24")

PB7: STA. 408+00, 42' LT (13"x24")

PB8: STA. 409+02, 44' LT (13"x24")

* - DENOTES STATIONING ALONG TOWNLINE ROAD

CALCULATED
TJF
CHECKED
IMH

GRAPHIC SCALE
0 10 20
(IN FEET)

TRAFFIC SIGNAL PLAN
U.S. 20 / TOWNLINE ROAD

LAK - 20 - 18.72