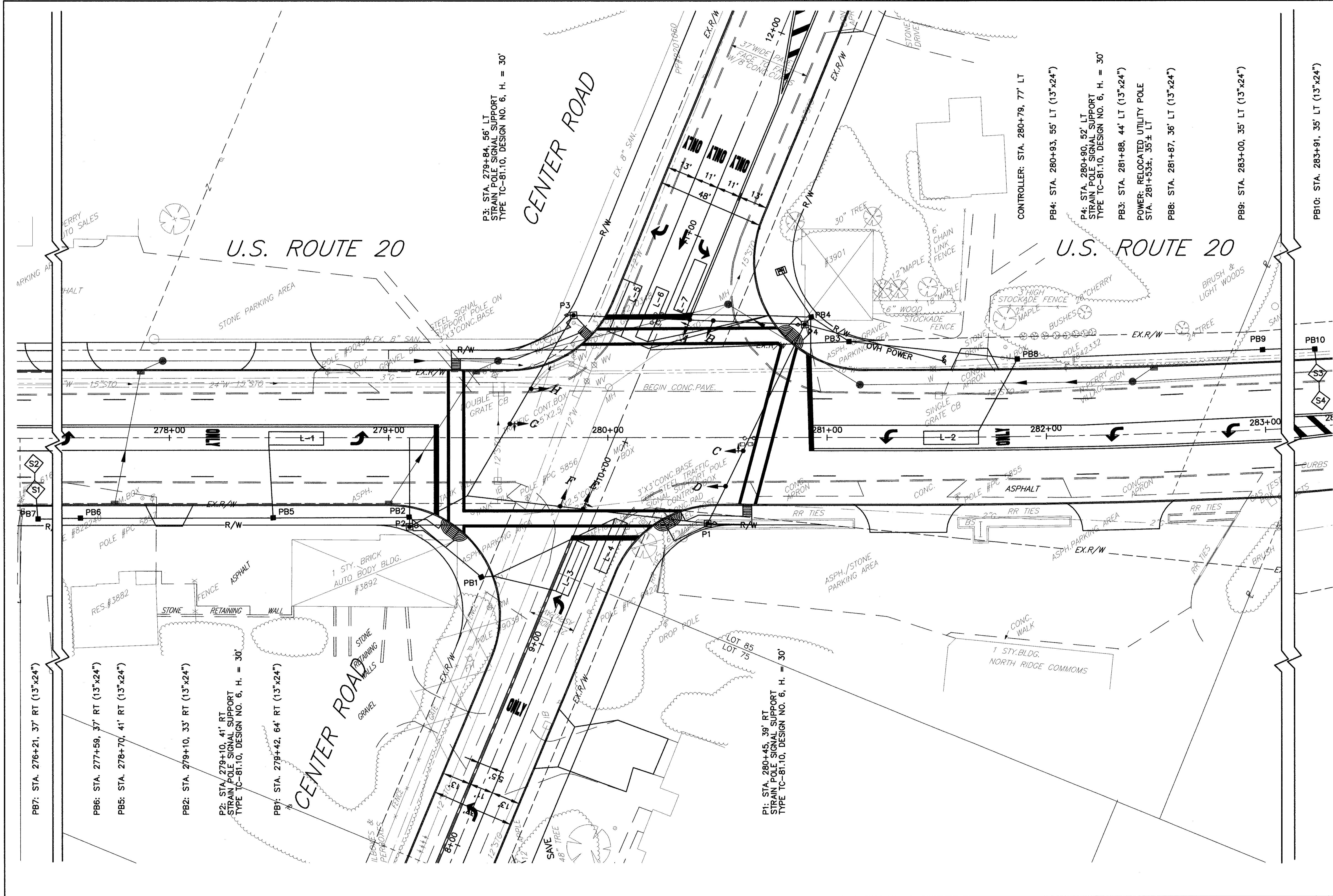


DATE: 10-04-02 - H: 1998\98404.DWG\98404.T03.DWG



PB7: STA. 276+21, 37' RT (13"x24")

PB6: STA. 277+59, 37' RT (13"x24")

PB5: STA. 278+70, 41' RT (13"x24")

PB2: STA. 279+10, 33' RT (13"x24")

P2: STA. 279+10, 41' RT STRAIN POLE SIGNAL SUPPORT TYPE TC-81.10, DESIGN NO. 6, H. = 30'

PB1: STA. 279+42, 64' RT (13"x24")

P3: STA. 279+84, 56' LT STRAIN POLE SIGNAL SUPPORT TYPE TC-81.10, DESIGN NO. 6, H. = 30'

P1: STA. 280+45, 39' RT STRAIN POLE SIGNAL SUPPORT TYPE TC-81.10, DESIGN NO. 6, H. = 30'

CONTROLLER: STA. 280+79, 77' LT

PB4: STA. 280+93, 55' LT (13"x24")

P4: STA. 280+90, 52' LT STRAIN POLE SIGNAL SUPPORT TYPE TC-81.10, DESIGN NO. 6, H. = 30'

PB3: STA. 281+88, 44' LT (13"x24")

POWER: RELOCATED UTILITY POLE STA. 281+53±, 35' ± LT

PB8: STA. 281+87, 36' LT (13"x24")

PB9: STA. 283+00, 35' LT (13"x24")

PB10: STA. 283+91, 35' LT (13"x24")

TRAFFIC SIGNAL PLAN
U.S. 20 / CENTER ROAD

LAK - 20 - 18.72

329
441

CALCULATED T.J.F. CHECKED IMH

GRAPHIC SCALE
0 10 20
1" = 30'

1" = 30'