



NOT TO SCALE

CALCULATED T.J.F. CHECKED J.M.H.

TRAFFIC SIGNAL PLAN U.S. 20 / BACON ROAD / BOWHALL ROAD

LAK - 20 - 18.72

321 441

SIGNAL DIRECTION	SIGNAL HEAD	φ1 & φ5		φ1 & φ6		φ2 & φ5		φ2 & φ6		φ3 & φ7		φ3 & φ8		φ4 & φ7		φ4 & φ8		FLASH	
		R/W	CLEAR	R/W	CLEAR	R/W	CLEAR	R/W	CLEAR	R/W	CLEAR	R/W	CLEAR	R/W	CLEAR	R/W	CLEAR		
NORTHBOUND	A	R	R	R	R	R	R	R	R	R	R	R	R	R	R	R	R	R	
	B	R	R	R	R	R	R	R	R	R	R	R	R	R	R	R	R	R	
EASTBOUND	C	R	R	R	R	R	R	R	R	R	R	R	R	R	R	R	R	R	Y
	D	R	R	R	R	R	R	R	R	R	R	R	R	R	R	R	R	R	Y
SOUTHBOUND	E	R	R	R	R	R	R	R	R	R	R	R	R	R	R	R	R	R	Y
	F	R	R	R	R	R	R	R	R	R	R	R	R	R	R	R	R	R	Y
WESTBOUND	G	R	R	R	R	R	R	R	R	R	R	R	R	R	R	R	R	R	Y
	H	R	R	R	R	R	R	R	R	R	R	R	R	R	R	R	R	R	Y

POLE NUMBER	STATION	OFFSET	PEDESTRIAN	DESIGN NUMBER	POLE HEIGHT (ft)	ATTACHMENT HEIGHT	INDEX LINE ANGLE (deg)	ANGLES (deg) FROM INDEX LINE (SEE INDEX LINE ORIENTATION DIAGRAM)				
								POWER SERVICE 1-1/2" BHC, 30"	PEDESTRIAN PUSH BUTTON	CONDUIT ELL SIZE & ANGLE	CABLE ENTRANCE, 2" BHC (12" FROM TOP)	2" CAPPED CONDUIT, ELL (FUTURE USE)
1	76+05.5	63' RT	-	6	30	24.5	240	-	-	2"-72'	180	252
2	77+23	45' RT	-	6	30	24.5	180	-	-	2"-93'	132	273
3	77+13	50' LT	-	6	30	24.5	165	-	-	2"-63'	131	243
4	78+25	60' LT	-	6	30	24.5	240	295	180	2"-80'	180	-
5	78+03	44' RT	YES	-	8	-	90	-	90	2"-90'	-	270

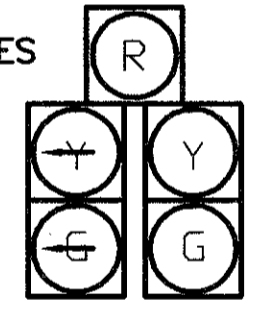
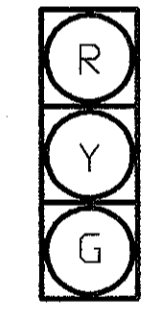
(a) R/-φ IF φ2 φ5 IS NEXT (c) G/-φ IF φ2 φ6 IS NEXT (e) R/-φ IF φ3 φ8 IS NEXT (g) G/-φ IF φ4 φ8 IS NEXT
 (b) R/-φ IF φ1 φ6 IS NEXT (d) G IF φ2 φ6 IS NEXT (f) R/-φ IF φ4 φ7 IS NEXT (h) G IF φ4 φ8 IS NEXT

SIGNAL SEQUENCE CHART

FUNCTION	φ1	φ2	φ3	φ4	φ5	φ6	φ7	φ8
INITIAL GREEN	10.0	37.0	10.0	15.0	10.0	37.0	10.0	15.0
MINIMUM GREEN	-	-	-	-	-	-	-	-
VEHICLE EXTENSION	3.0	3.0	3.0	3.0	3.0	3.0	3.0	3.0
MAXIMUM GREEN	20.0	40.0	20.0	30.0	20.0	40.0	20.0	30.0
PEDESTRIAN WALK	-	7.0	-	-	-	7.0	-	7.0
PEDESTRIAN CLEARANCE	-	30.0	-	-	-	30.0	-	23.0
VEHICLE YELLOW CLEARANCE	5.5	5.5	5.0	5.0	5.5	5.5	5.0	5.0
VEHICLE ALL RED CLEARANCE	2.0	2.0	2.0	2.0	2.0	2.0	2.0	2.0
RECALL	OFF	MIN	OFF	OFF	OFF	MIN	OFF	OFF
MEMORY	N.L.	N.L.	N.L.	N.L.	N.L.	N.L.	N.L.	N.L.

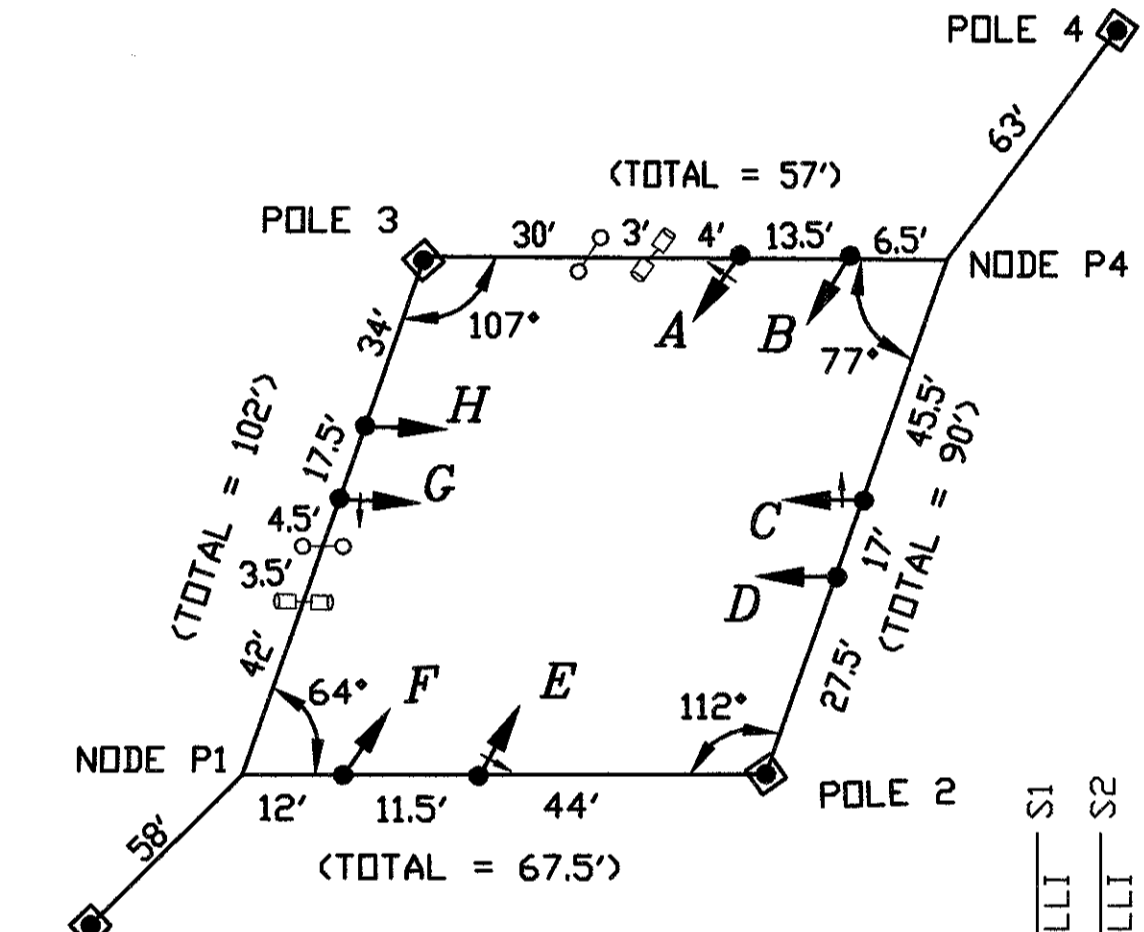
NOTE: LTT = 2 MUST BE SET AT WAPITI KEYSTROKES A + 3 + A.

SIGNAL TIMING CHART

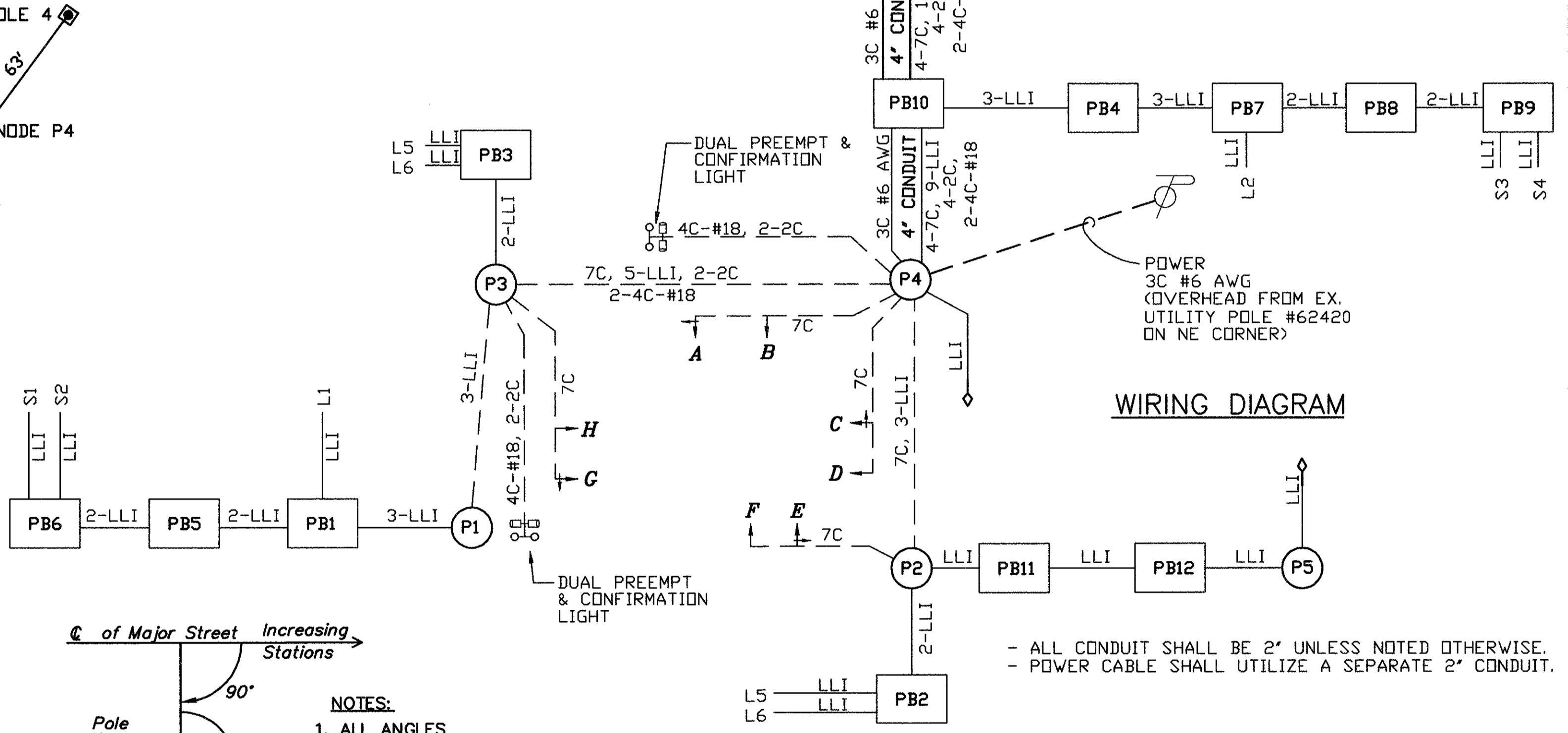


PEDESTRIAN PUSHBUTTON SIGNS

SIGNAL HEADS

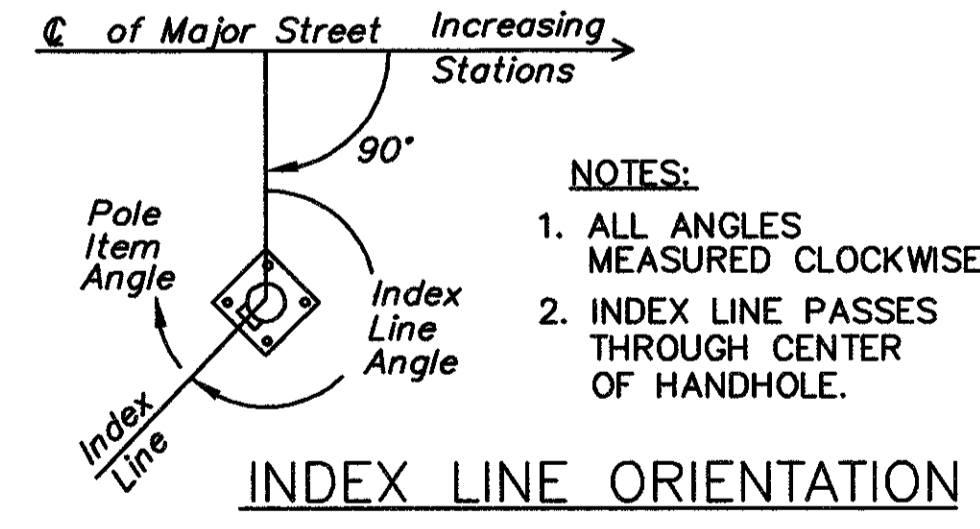


SPAN DIAGRAM



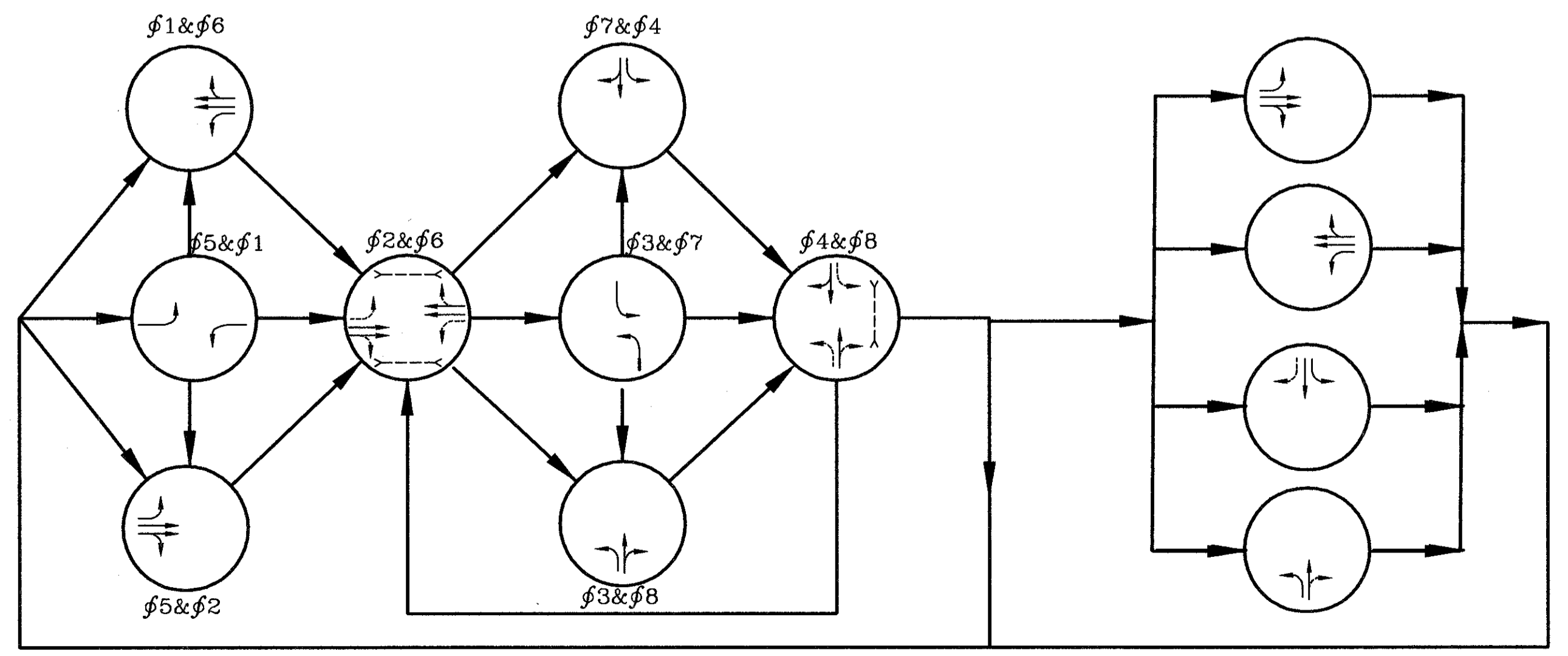
WIRING DIAGRAM

- ALL CONDUIT SHALL BE 2" UNLESS NOTED OTHERWISE.
 - POWER CABLE SHALL UTILIZE A SEPARATE 2" CONDUIT.



INDEX LINE ORIENTATION

NOTES:
 1. ALL ANGLES MEASURED CLOCKWISE.
 2. INDEX LINE PASSES THROUGH CENTER OF HANDHOLE.



PHASING DIAGRAM

PRE-EMPT

LOOP	SIZE	TURNS	MODE	DELAY	PHASE	REMARK	INHIBITED DELAY	LOCATION 1st FRONT CORNER	LOCATION 2nd FRONT CORNER
L-1	6X25	3	PRESENCE	-	φ5	STANDARD	-	STA. 76+26, 3' LT	STA. 76+26, 3' RT
L-2	6X25	3	PRESENCE	-	φ1	STANDARD	-	STA. 78+50, 3' LT	STA. 78+50, 3' RT
L-3	6X25	3	PRESENCE	2.0	φ3	STANDARD	φ3	STA. 9+37, 3' LT	STA. 9+37, 3' RT
L-4	6X25	3	PRESENCE	8.0	φ8	STANDARD	φ8	STA. 9+56, 9' RT	STA. 9+56, 15' RT
L-5	6X25	3	PRESENCE	8.0	φ4	STANDARD	φ4	STA. 11+54, 9' LT	STA. 11+54, 15' LT
L-6	6X25	3	PRESENCE	2.0	φ7	STANDARD	φ7	STA. 11+74, 3' LT	STA. 11+74, 3' RT
S-1	6X6	3	PULSE	-	φ5	DIAMOND	-	STA. 73+50, 25' RT	-
S-2	6X6	3	PULSE	-	φ5	DIAMOND	-	STA. 73+50, 10' RT	-
S-3	6X6	3	PULSE	-	φ1	DIAMOND	-	STA. 81+27, 22.9' LT	-
S-4	6X6	3	PULSE	-	φ1	DIAMOND	-	STA. 81+27, 11.6' LT	-

LOOP DETECTOR CHART

DATE: 09-26-02 - H: 1999\98404\DWG\98404T06.DWG