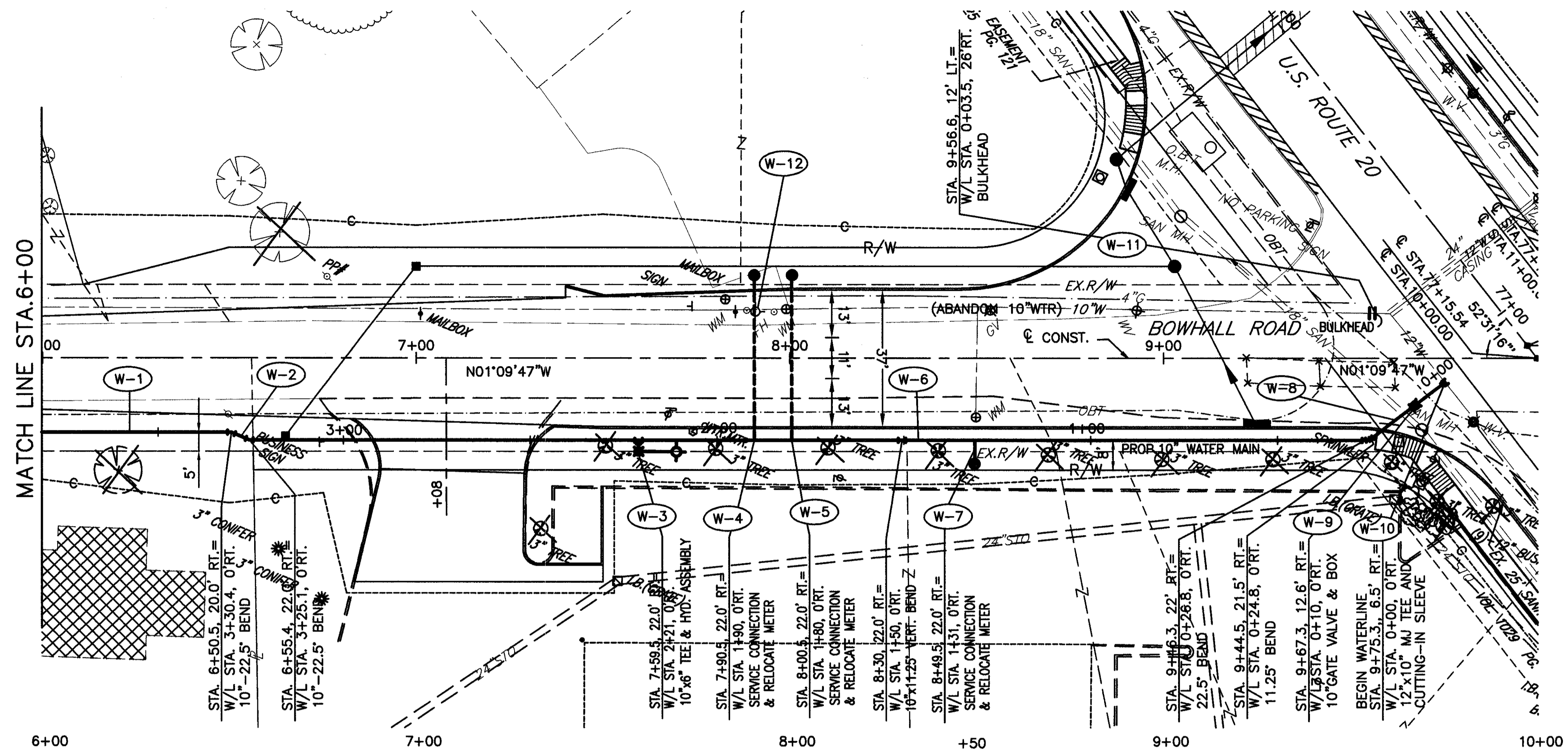


H:\1998\98404\DWG\SSPR52.DWG



705	685.01	684.10	683.04	681.82	680.52	679.29	678.20	677.24	676.42	675.75	675.20	674.80	674.54	674.41	674.42	705
700	PVI STA = 6+00 PVI ELEV = 685.72 SSD = 250' SSD EXCEEDS DESIGN VALUE 150.00' VC															700
695	679.1	677.1	674.5	PROPOSED WATERLINE TRENCH INVERTS LOW POINT ELEV = 674.40 LOW POINT STA = 9+35.51 PVI STA = 8+25 PVI ELEV = 674.02 SSD = 236' SSD EXCEEDS DESIGN VALUE 250.00' VC												695
690	MATCH LINE STA. 6+00															690
685	PVT STA. 6+75 PVT ELEV. 681.82 PVC STA. 7+00 PVI ELEV. 680.52 PROPOSED GRADE EX HYDRANT STA. 7+90, 732															685
680	EX 10" WTR 5" MIN. COVER PROP 10" WATER MAIN -5.20% ALL JOINTS WITHIN THIS AREA SHALL BE RESTRAINED W/L STA. 2+02 TO STA. 3+52 CB. NO. 2-2B STA. 7+00.00, 25.00' LT. RIM 681.70 15" INV. 675.53 SE&N ALL JOINTS WITHIN THIS AREA SHALL BE RESTRAINED W/L STA. 1+12 TO STA. 1+72 EX GRADE ALL JOINTS WITHIN THIS AREA SHALL BE RESTRAINED W/L STA. 0+00 TO STA. 0+52 EX 12" WTR															680
675	0.32% MANHOLE NO. 3 STA. 9+03.00, 25.00' LT. RIM 674.44 15" NV. 668.47 S, SW&NE															675
670	MATCH LINE STA. 6+00															670
665	665.57	664.35	662.46	660.05	677.75	675.98	674.79	674.64	203'-15" CONDUIT, TYPE B @ 3.48% 18" SAN							665
660	MATCH LINE STA. 6+00															660

SCALE IN FEET

CALCULATED

CHECKED

BOWHALL ROAD WATER MAIN IMPROVEMENTS
 STA. 6+00 TO STA. 10+00

LAK - 20 - 18.72

305
441