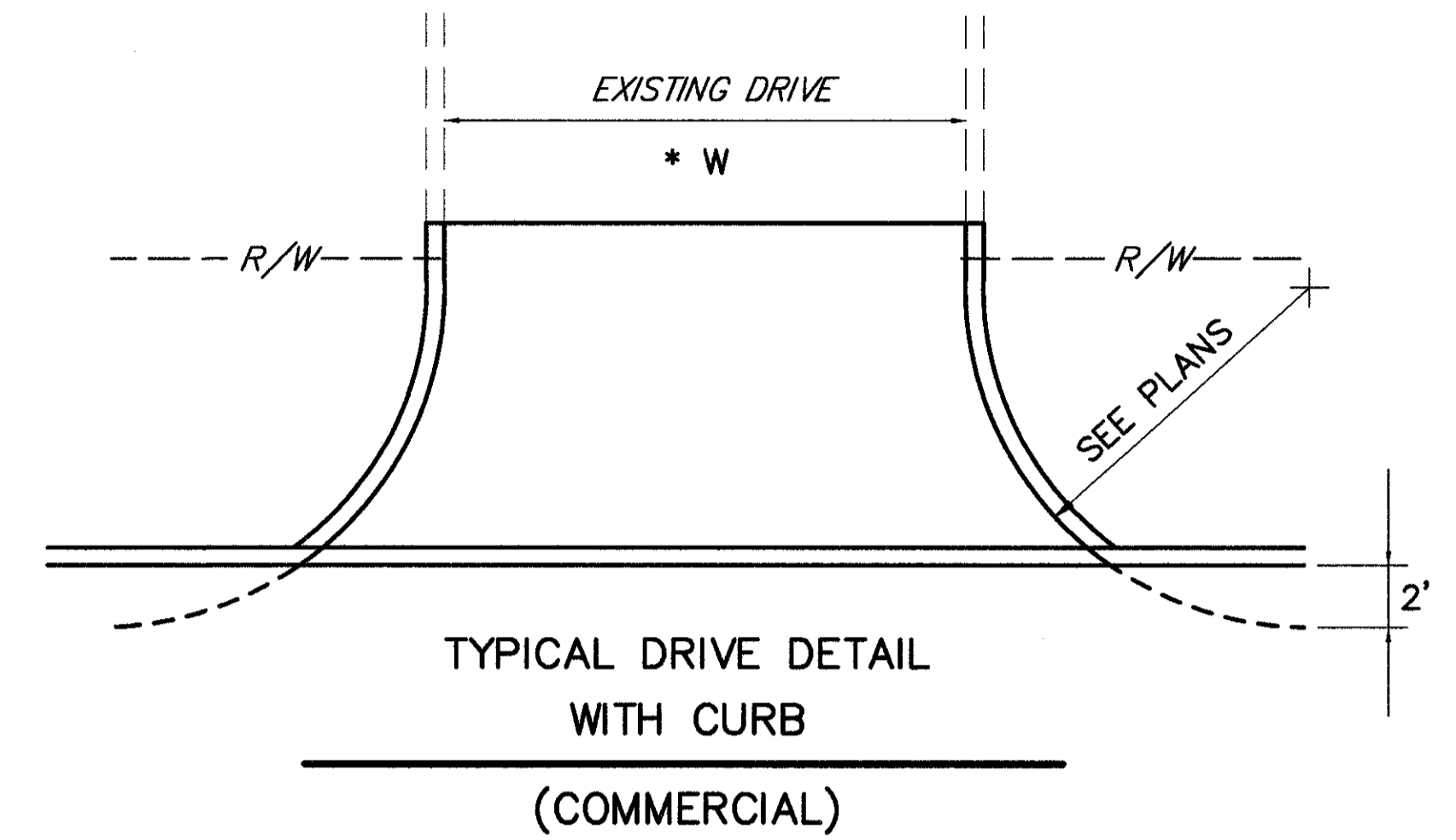
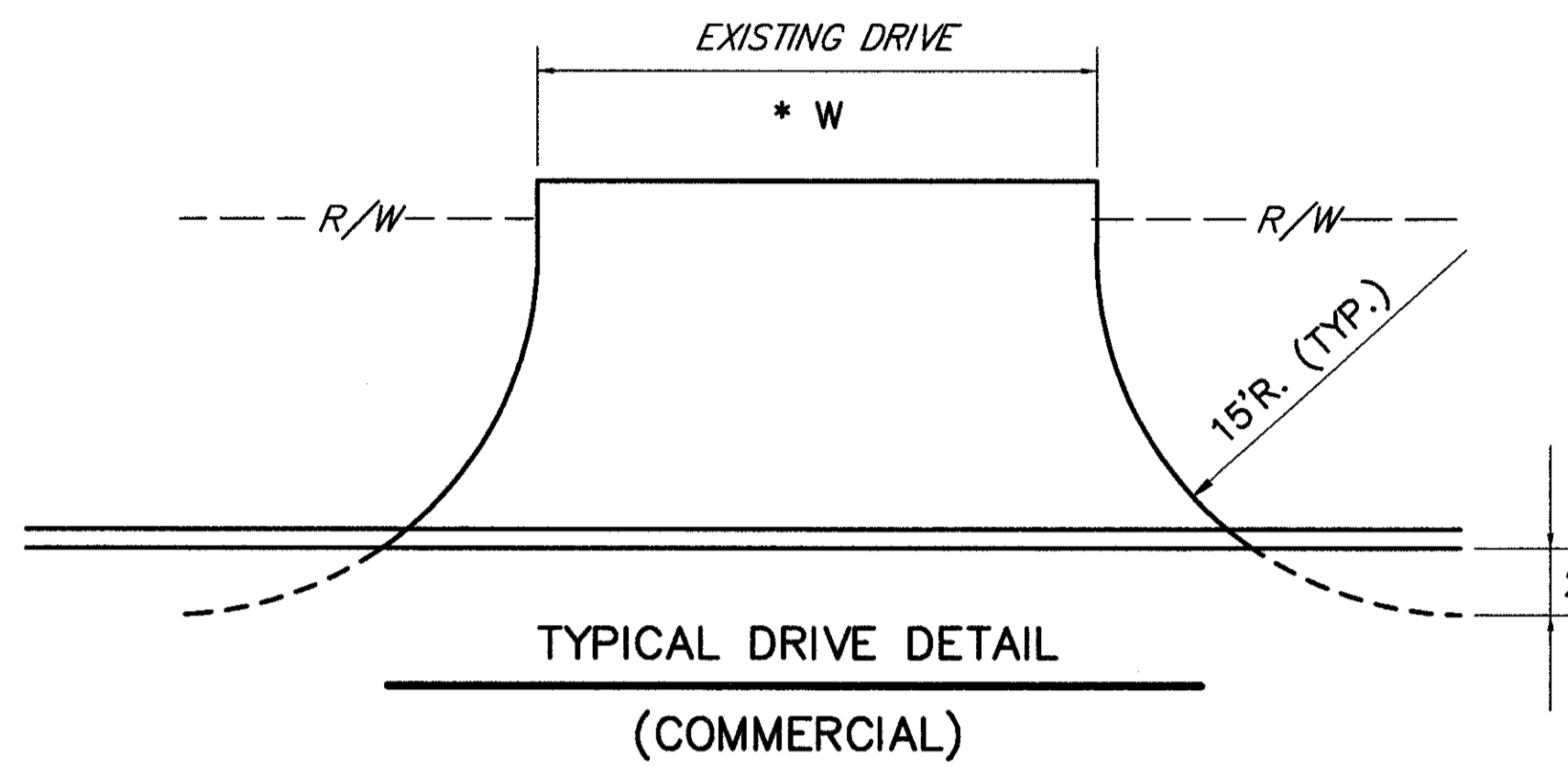
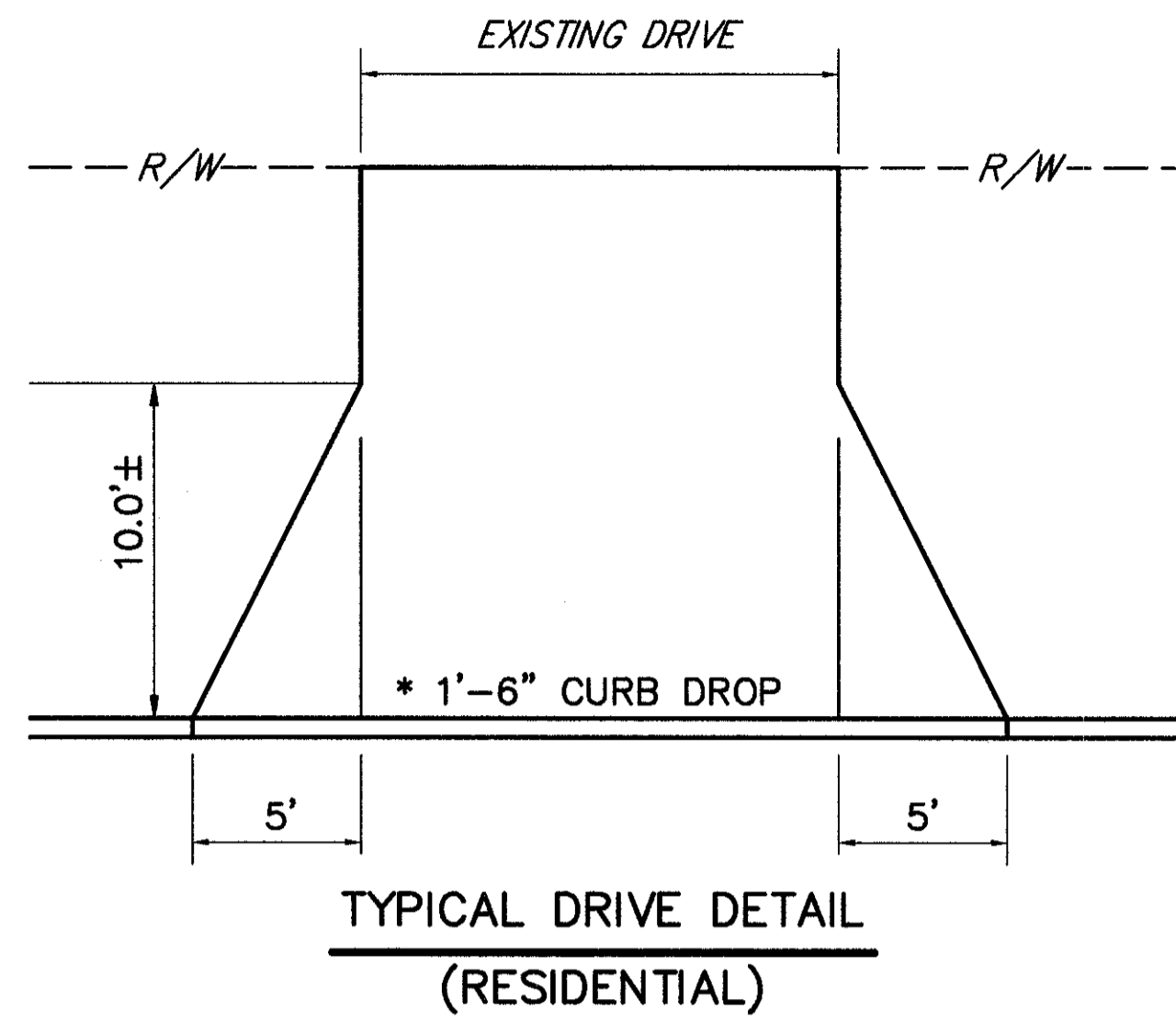
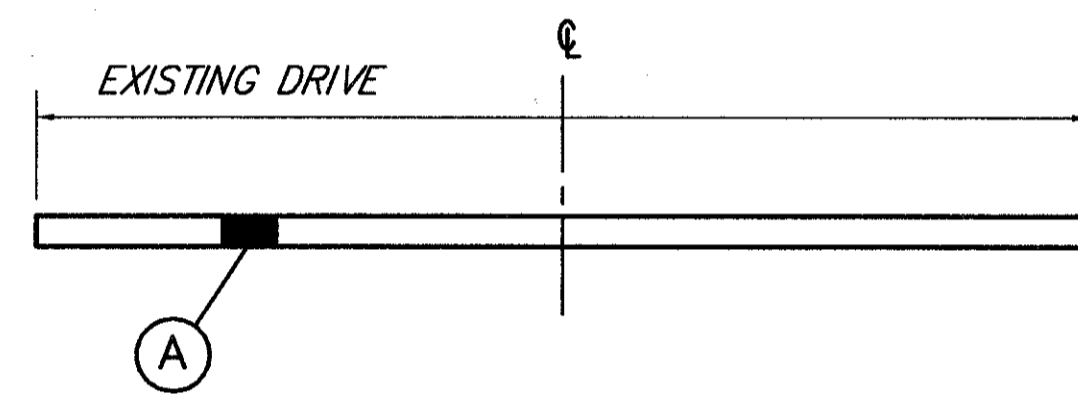


* 35' MAXIMUM WIDTH

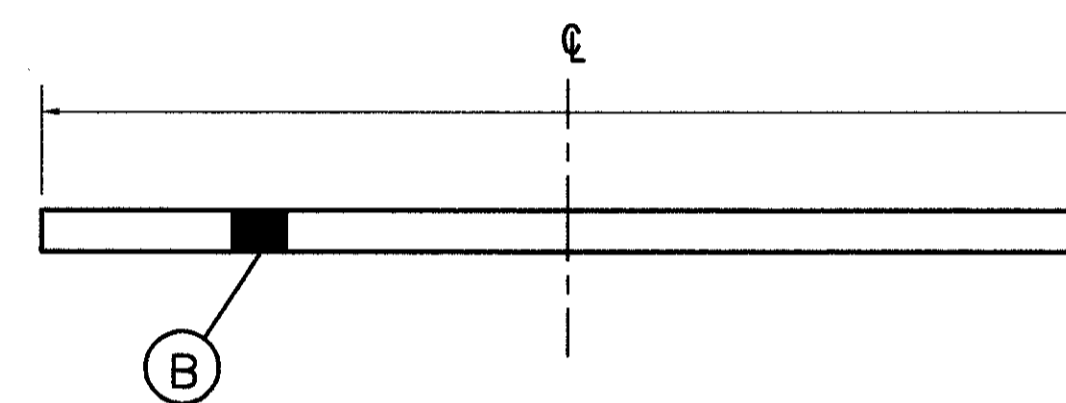


EXISTING DRIVE W = AS PER PLAN



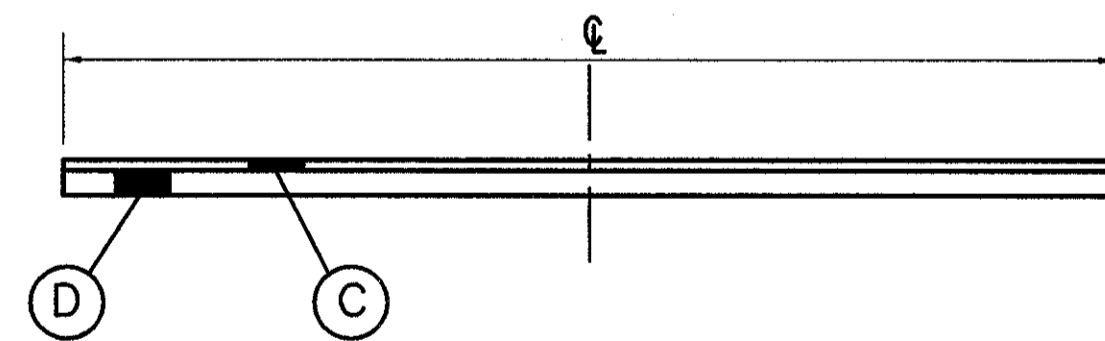
RESIDENTIAL CONCRETE DRIVE

W = AS PER PLAN



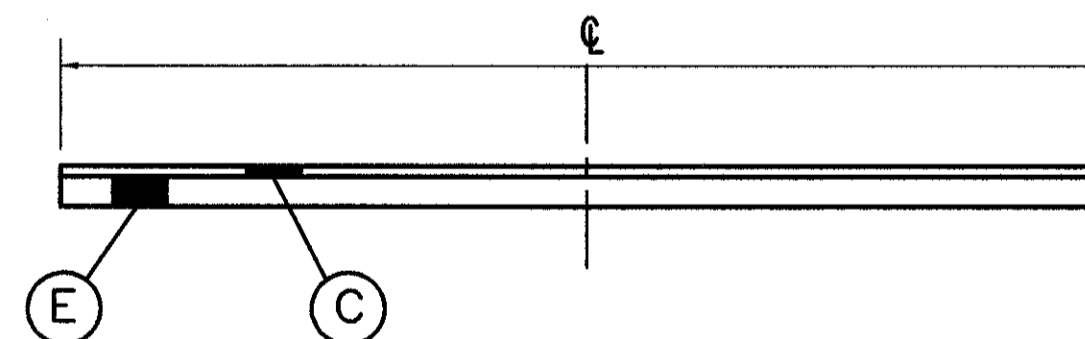
COMMERCIAL CONCRETE DRIVE

W = AS PER PLAN



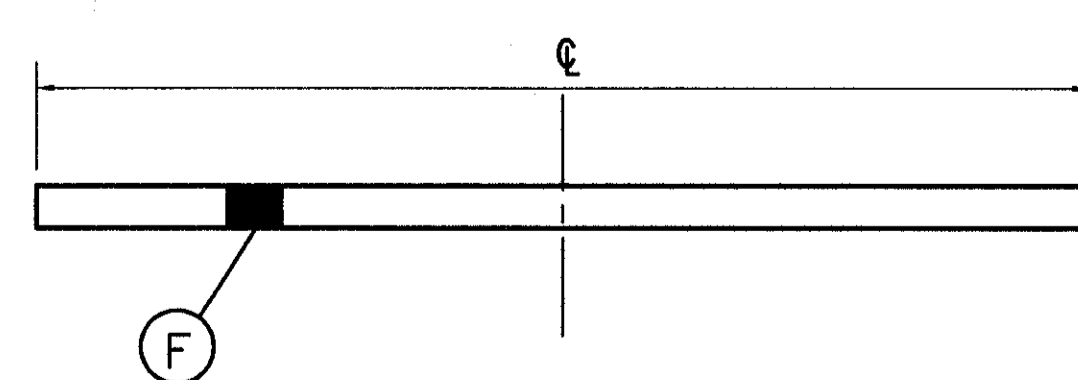
RESIDENTIAL ASPHALT DRIVE

W = AS PER PLAN



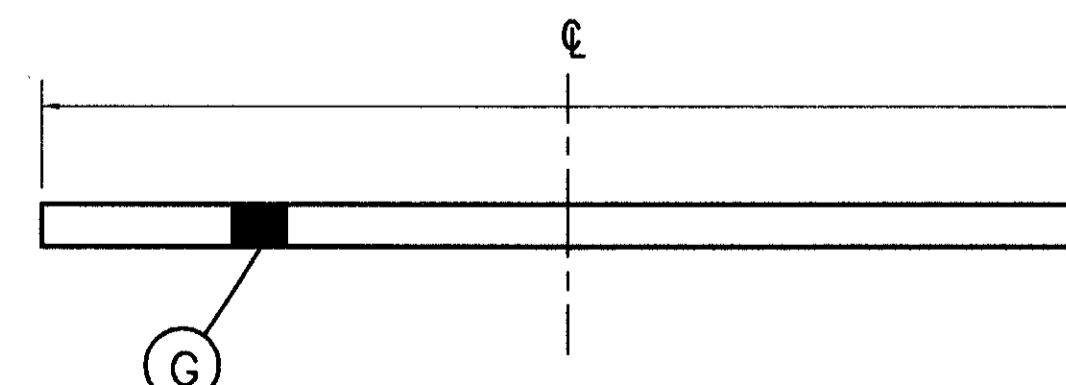
COMMERCIAL ASPHALT DRIVE

W = AS PER PLAN



RESIDENTIAL STONE DRIVE

W = AS PER PLAN



COMMERCIAL STONE DRIVE

WHERE DRIVE ABUTS NEW OR EXISTING CONCRETE SIDEWALKS AND NEW OR EXISTING CONCRETE CURBS, 1/2" EXPANSION JOINT MATERIAL 705.03 SHALL BE PROVIDED.

CONCRETE DRIVES AND APRONS TO HAVE IMPRESSED JOINT ALONG ⊕ OF DRIVE, ADDITIONAL IMPRESSED JOINTS SHALL BE SPACED AT 8 FT. CENTERS OR AS DIRECTED BY THE ENGINEER.

THE EXPANSION JOINT BETWEEN THE BACK OF CURB AND DRIVE APRON SHALL BE SEALED WITH 705.01, 705.02 OR 705.11 JOINT SEALER.

LEGEND

- (A) ITEM 452 - 6" PLAIN CONCRETE
- (B) ITEM 452 - 8" PLAIN CONCRETE
- (C) ITEM 448 - 1-1/4" ASPHALT CONCRETE SURFACE COURSE TYPE 1, PG 64-22
- (D) ITEM 301 - 3-3/4" BITUMINOUS AGGREGATE BASE PG 64-22
- (E) ITEM 301 - 4-3/4" BITUMINOUS AGGREGATE BASE PG 64-22
- (F) ITEM 304 - 8" AGGREGATE BASE
- (G) ITEM 304 - 10" AGGREGATE BASE