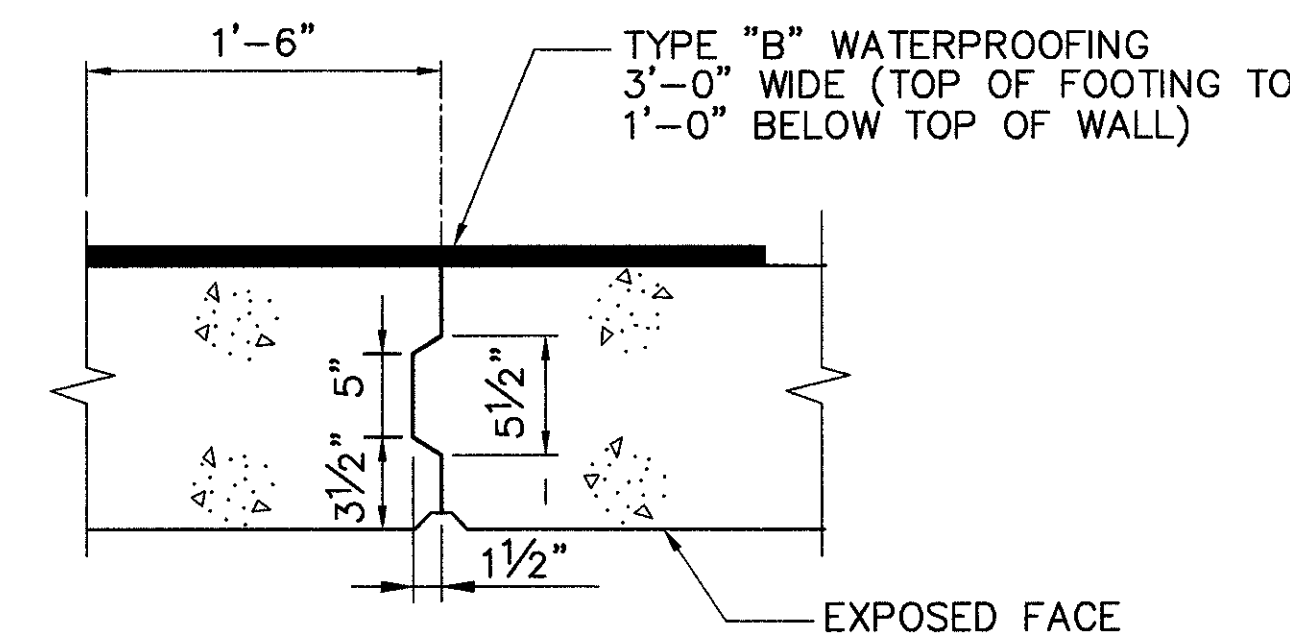
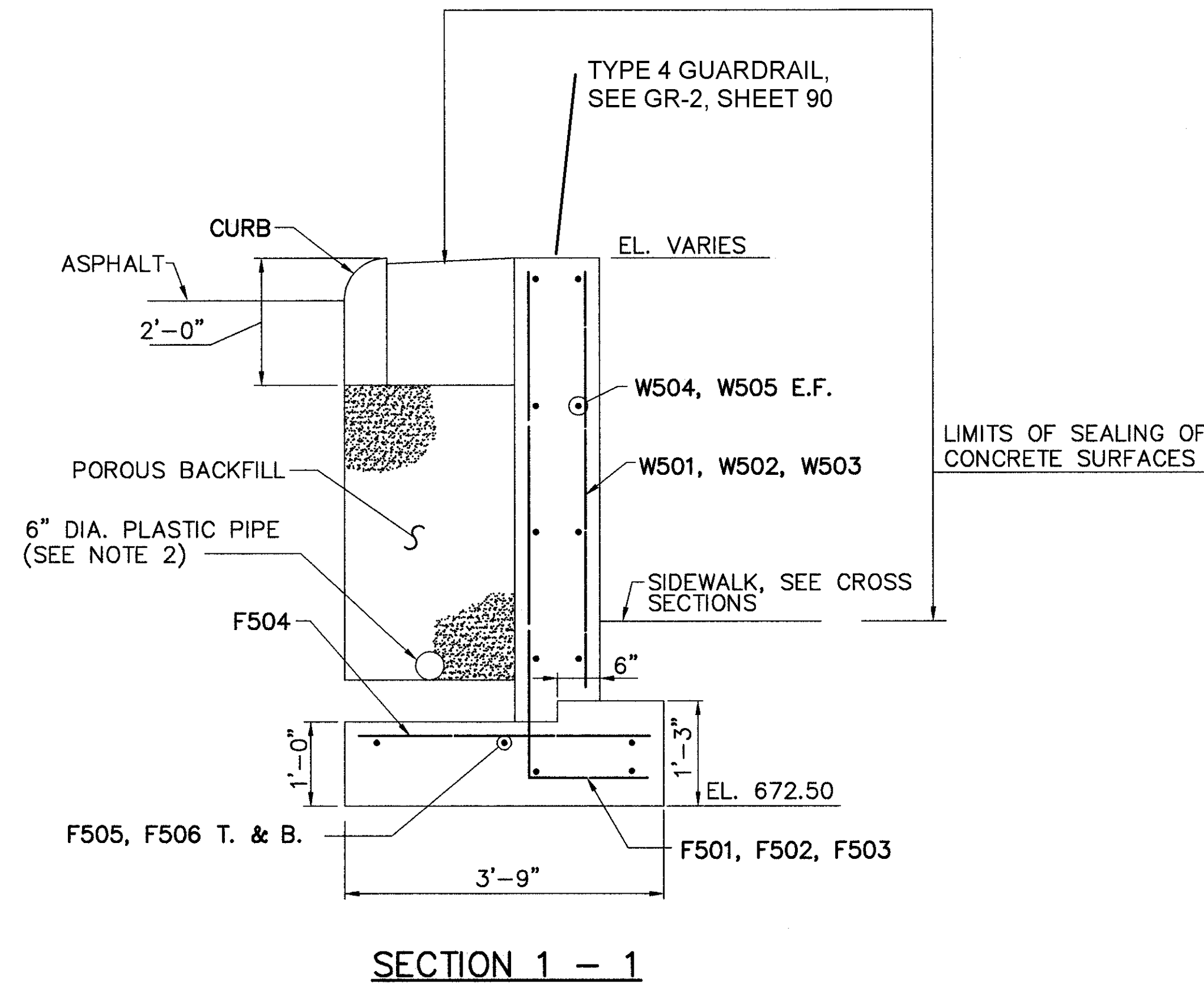
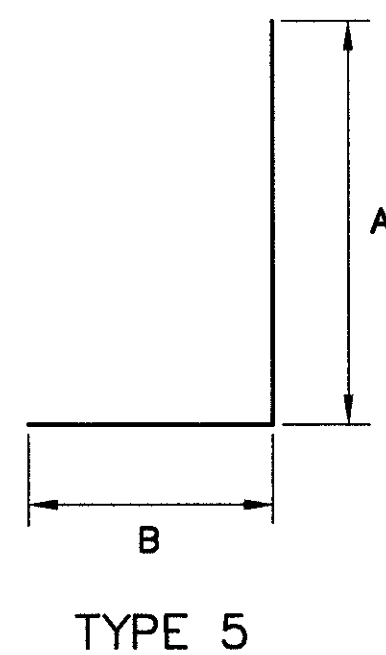


REINFORCING STEEL BAR SCHEDULE

MARK	TOTAL NUMBER	LENGTH	WEIGHT	TYPE	A	B	C	D	H (in.)	INC.
<b>RETAINING WALL</b>										
W501	22	5'-1" 4'-9"	113	STR					1/4"	
W502	22	4'-8" 4'-5"	104	STR					1/8"	
W503	18	4'-4" 4'-2"	80	STR					1/8"	
W504	14	31'-8"	462	STR						
W505	6	25'-8"	161	STR						
F501	22	7'-4" 7'-0"	165	5	6'-1" 5'-9"	1'-5"			1/4"	
F502	22	7'-0" 6'-8"	157	5	5'-9" 5'-5"	1'-5"			1/4"	
F503	18	6'-8" 6'-5"	123	5	5'-5" 5'-2"	1'-5"			3/16"	
F504	62	3'-5"	221	STR						
F505	10	31'-8"	330	STR						
F506	5	25'-8"	134	STR						
TOTAL FOR WALL #1 = 2,050 LBS.										



CALC. BY: J.J.G. CHECKED BY R.J.C.  
DATE: 12/17/02 DATE: 12/18/02

ESTIMATED QUANTITIES

ITEM	ITEM EXT.	TOTAL	UNIT	DESCRIPTION
503	21100	100	CU. YD.	UNCLASSIFIED EXCAVATION
509	10000	2,050	LBS.	EPOXY COATED REINFORCING STEEL
512	44400	3	SQ. YD.	TYPE B WATERPROOFING
518	21200	21	CU. YD.	POROUS BACKFILL WITH FILTER FABRIC
518	40000	90	FT.	6" PERFORATED CORRUGATED PLASTIC PIPE
842	46000	17	CU. YD.	CLASS C CONCRETE, RETAINING WALL, ABOVE FOOTING
842	46500	14	CU. YD.	CLASS C CONCRETE, FOOTING
864	10100	35	SQ. YD.	SEALING OF CONCRETE SURFACES (EPOXY-URETHANE)

THE BAR SIZE NUMBER IS SPECIFIED ON THE PLANS IN THE BAR MARK COLUMN.  
THE FIRST DIGIT WHERE THREE DIGITS ARE USED, AND THE FIRST TWO DIGITS WHERE FOUR ARE USED, INDICATE THE BAR SIZE NUMBER. FOR EXAMPLE, A700 IS A NO. 7 AND A1014 IS A NO. 10 SIZE. BAR DIMENSIONS SHOWN ARE OUT TO OUT, UNLESS OTHERWISE INDICATED. R INDICATES INSIDE RADIUS, UNLESS OTHERWISE NOTED. "STD." WRITTEN IN PLACE OF A DIMENSION INDICATES A STANDARD BEND AT THE END OF THE BAR.

ALL REINFORCING STEEL TO BE EPOXY COATED.

NOTES:

- POROUS BACKFILL WITH FILTER FABRIC, 2'-0" THICK, SHALL EXTEND UP TO TWO FEET BELOW THE EMBANKMENT SURFACE AND Laterally TO THE ENDS OF THE RETAINING WALL.
- 6" PERFORATED CORRUGATED PLASTIC PIPE (707.33), TYPE SP.
- FOOTINGS ARE DESIGNED FOR A MAXIMUM ACTUAL BEARING PRESSURE OF 1,800 PSF.

LEGEND:

E.F. DENOTES EACH FACE  
N.F. DENOTES NEAR FACE  
F.F. DENOTES FAR FACE  
T. DENOTES TOP  
B. DENOTES BOTTOM  
DWL'S DENOTES DOWELS