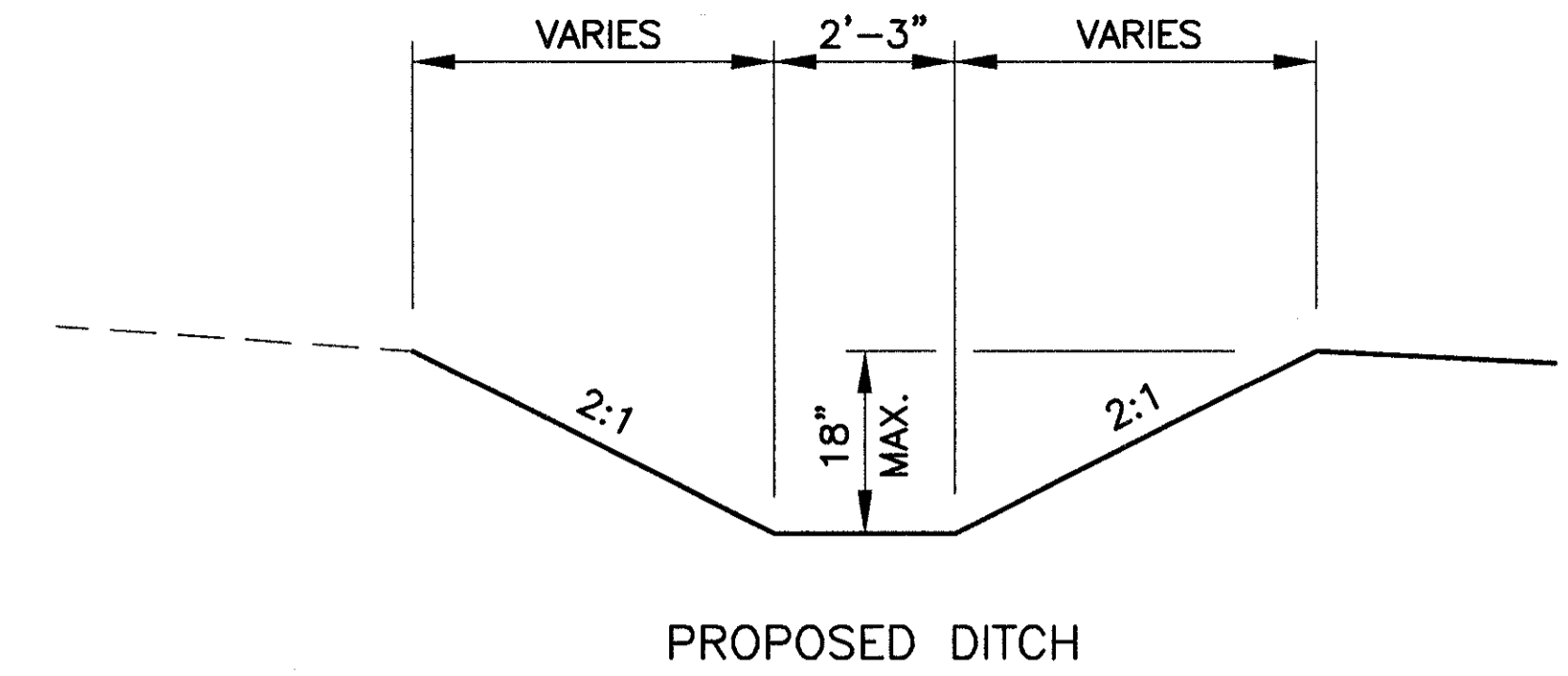
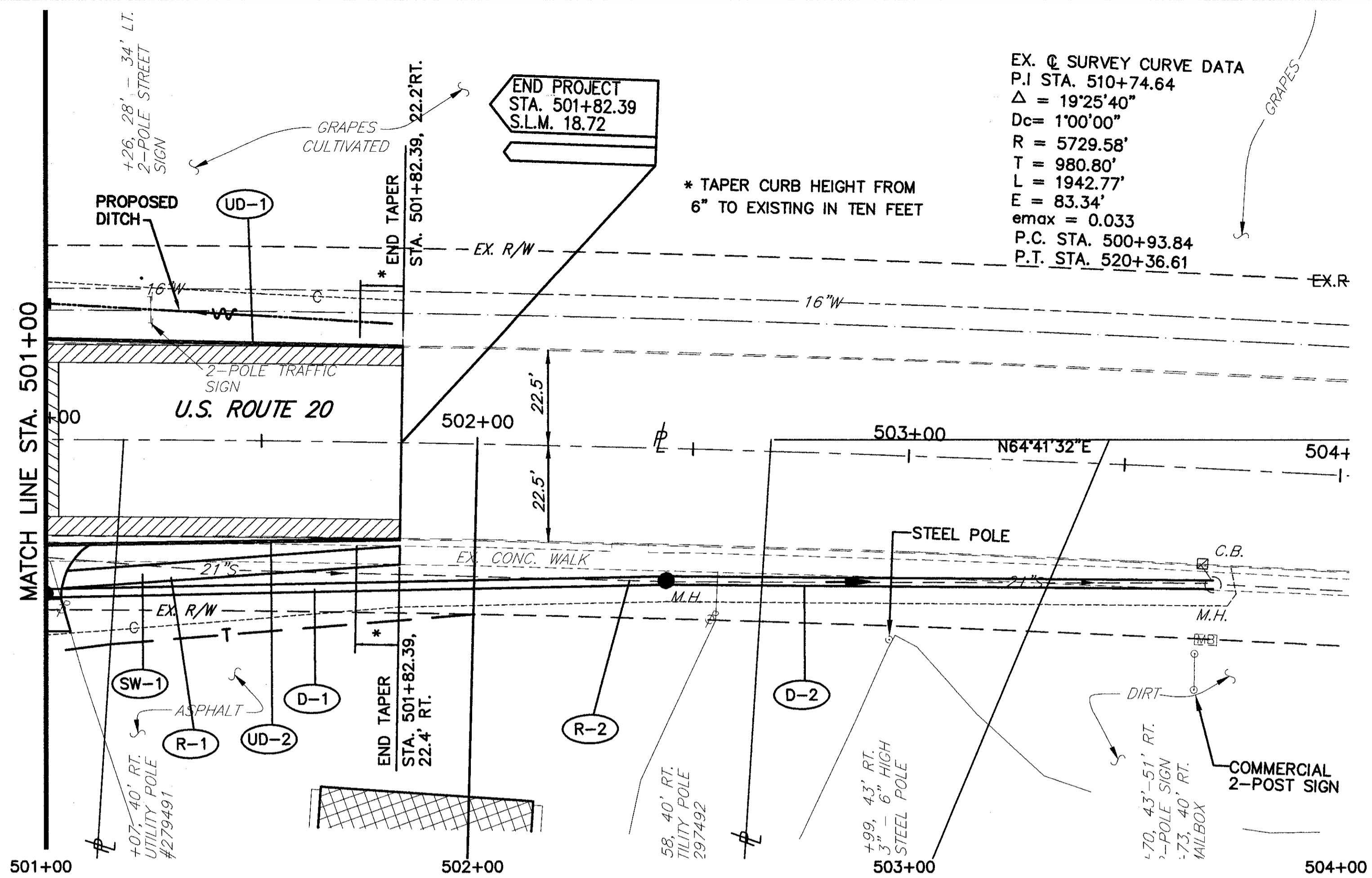


COPYRIGHT: CT CONSULTANTS INC. H:\1998\98404gr\DWG\GreenRd.dwg 07/21/99 11:01:32 AM EDT



FULL DEPTH PAVEMENT REPAIR AS PER SECTION 603.09 OF THE CONSTRUCTION AND MATERIALS SPECIFICATIONS.

EXISTING PAVEMENT TO BE REMOVED

695	501+00	676.59	676.82	676.57	676.46	676.34	676.11	675.88	675.65	675.42	695
690											690
685		100.00' VC HIGH POINT ELEV = 676.62 HIGH POINT STA = 501+21.72 PVI STA = 501+27.39 PVI ELEV = 676.75 SSD > 625' SSD EXCEEDS DESIGN VALUE									685
680											680
675											675
670											670
665											665
660											660
655											655
650											650
645											645

MATCH LINE STA. 501+00

MATCH LINE STA. 501+00

EX. 16" W.M.

EX. 21" STM

GR. = -0.18%

147' - 24" CONDUIT, TYPE C @ 0.10%

127' - 24" CONDUIT, TYPE C @ 0.10%

MH NO.3  
STA. 501+00.00, 36.0' RT.  
RIM 677.20  
24" INV. 670.22 NE & SW  
15" INV. 670.22 NW

MH NO.3  
STA. 502+47.00, 31.0' RT.  
RIM 675.88  
24" INV. 670.08 NE & SW

STM. MH. +74, 27 RT.  
EXIST. RIM ELEV. = 675.48  
INV. 24" W 670.13  
INV. 12" N 671.10  
INV. 24" E 669.95  
24" INV. 669.95 SW

STM. MH. +47, 30.5 RT.  
EXIST. RIM ELEV. = 675.88  
INV. 21" E&W 670.38

676.49

676.39

676.28

675.09

675.99

675.78

501+00 502+00 503+00 504+00