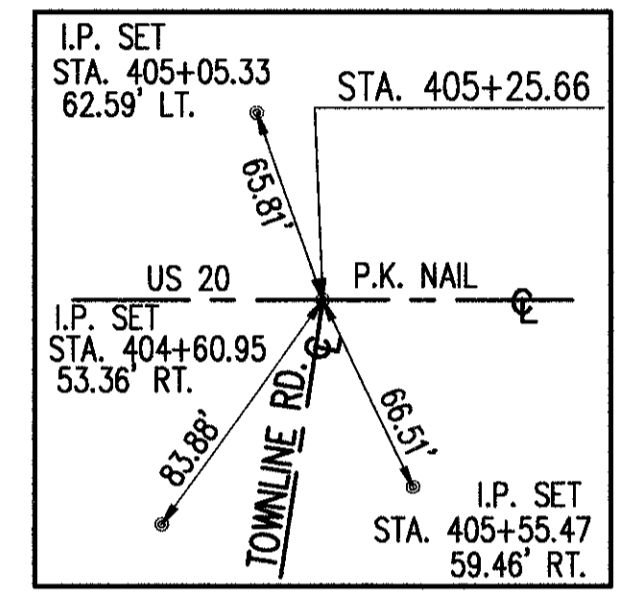
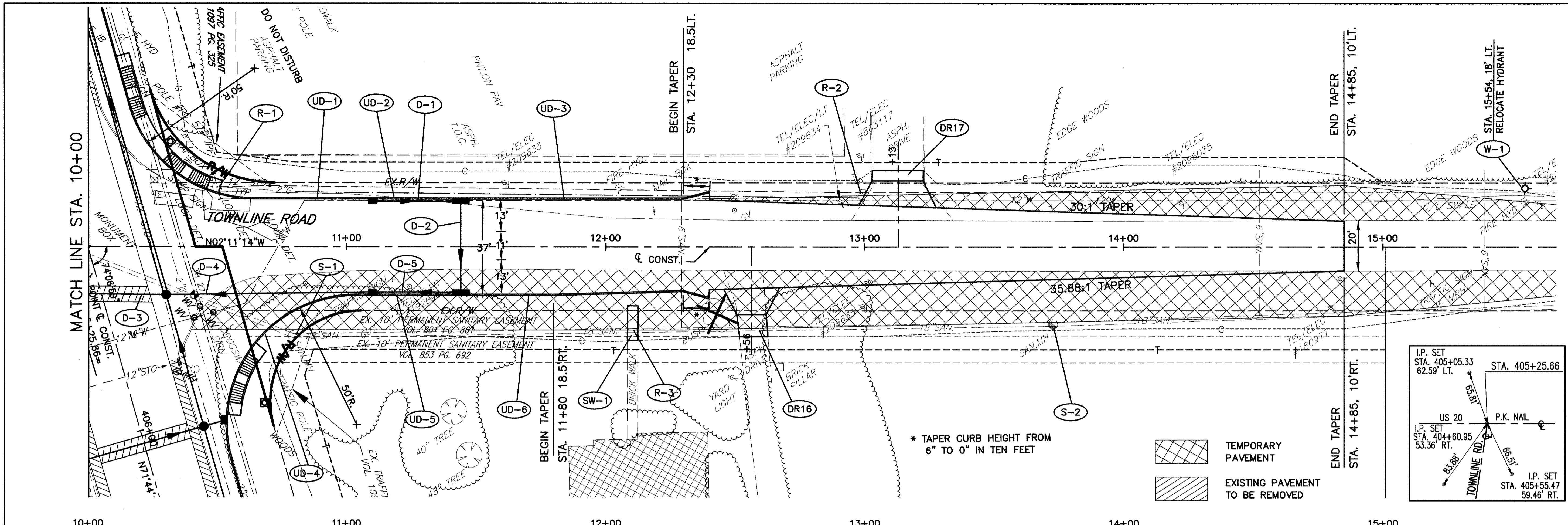


H:\1998\98404\DWG\SSPR31.DWG



Station	Elevation	Notes
10+00	685.35	MANHOLE STA. 10+30, 10.1' RT. RIM 685.56
11+00	684.92	LOW POINT ELEV = 684.79, LOW POINT STA = 11+44.14, PVI STA = 11+10, PVI ELEV = 684.64
12+00	684.88	HIGH POINT ELEV = 684.88, HIGH POINT STA = 11+95.57, PVI STA = 12+30, PVI ELEV = 685.03
13+00	684.48	GRADE BREAK NO VERTICAL CURVE
14+00	682.77	GRADE BREAK NO VERTICAL CURVE
15+00	681.51	GRADE BREAK NO VERTICAL CURVE

Station	Elevation	Notes
10+00	685.0	30' - 15" CONDUIT, TYPE B @ 0.50%
11+00	684.9	34' - 15" CONDUIT, TYPE B @ 0.50%
12+00	684.7	34' - 15" CONDUIT, TYPE B @ 0.50%
13+00	683.9	34' - 15" CONDUIT, TYPE B @ 0.50%
14+00	683.6	34' - 15" CONDUIT, TYPE B @ 0.50%
15+00	679.9	34' - 15" CONDUIT, TYPE B @ 0.50%

Station	Elevation	Notes
10+00	685.0	MANHOLE STA. 10+30, 10.1' RT. RIM 685.56
11+00	684.9	MANHOLE STA. 11+10, 18.5' RT. GRATE 684.61
12+00	684.8	MANHOLE STA. 12+10, 18.5' RT. GRATE 684.50
13+00	684.3	MANHOLE STA. 13+10, 18.5' RT. GRATE 684.45
14+00	682.8	MANHOLE STA. 14+10, 18.5' RT. GRATE 682.77
15+00	681.6	MANHOLE STA. 15+10, 18.5' RT. GRATE 681.51