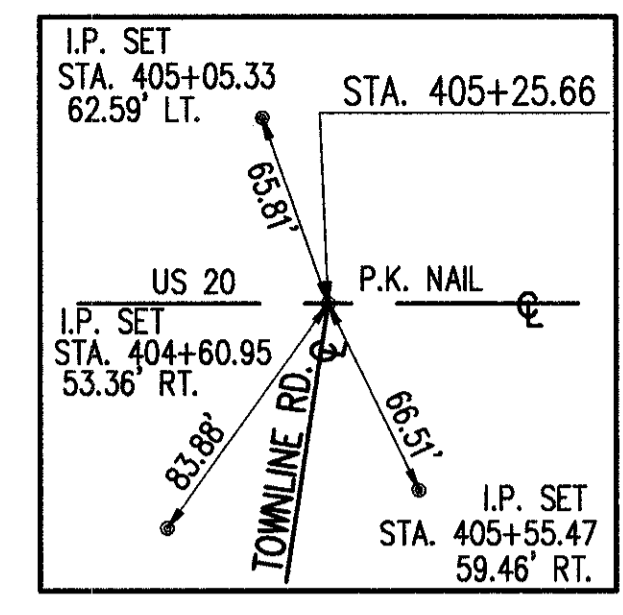
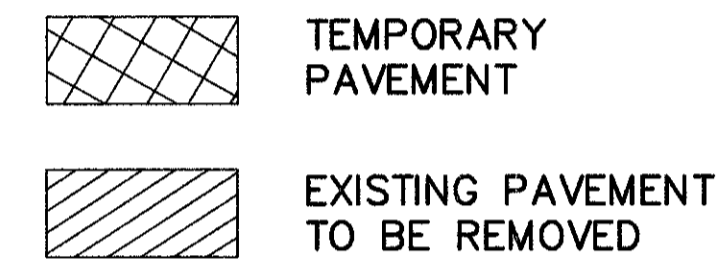


\* TAPER CURB HEIGHT FROM 0" TO 6" IN TEN FEET



FOR WATER MAIN QUANTITIES SEE SHEET 311



|     |   |        |        |   |        |        |  |        |        |   |        |     |     |
|-----|---|--------|--------|---|--------|--------|--|--------|--------|---|--------|-----|-----|
| 705 | 685.23  | 685.14 | 684.98 | 684.81  | 684.71 | 684.68 | 684.72   | 684.82 | 684.99 | 685.39  | 685.69 | 705 |     |
| 700 | HIGH POINT ELEV = 685.25<br>HIGH POINT STA = 8+83.33<br>PVI STA = 7+00<br>PVI ELEV = 685.38<br>SSD = 604' |        |        | LOW POINT ELEV = 684.68<br>LOW POINT STA = 8+24.63<br>PVI STA = 8+25<br>PVI ELEV = 684.38<br>SSD > 625' |        |        | SSD EXCEEDS DESIGN VALUE   |        |        | SSD EXCEEDS DESIGN VALUE  |        |     | 700 |
| 695 | 100.00' VC  |        |        | 150.00' VC  |        |        | SEE INTERSECTION DETAIL  |        |        | 695   |        |     |     |
| 690 | PVC & PVT STA. 7+50<br>ELEV. 684.98   |        |        | PVT STA. 9+00<br>PVT ELEV. 684.99   |        |        | PVI STA. = 9+50<br>PVI ELEV = 685.39<br>GRADE BREAK<br>NO VERTICAL CURVE     |        |        | 690   |        |     |     |
| 685 | PROP. PROFILE   |        |        |   |        |        |  |        |        |   |        |     |     |
| 680 | 0.80% 0.80% 0.80%   |        |        |   |        |        |  |        |        |   |        |     |     |
| 675 | 36' - 15" CONDUIT, TYPE B @ 0.50%   |        |        | 140' - 15" CONDUIT, TYPE B @ 0.50%  |        |        | CB NO. 3<br>STA. 8+24.00, 18.5' RT.<br>GRATE 684.22<br>15" INV. 680.76 N & W |        |        | CB NO. 3A<br>STA. 8+60.00, 18.5' RT.<br>GRATE 684.31<br>15" INV. 680.58 N & S |        |     | 675 |
| 670 | SAN. M.H.<br>STA. 9+34, 21' LT.<br>18" INV. N. 660.75<br>18" STUB S. 660.85                               |        |        |   |        |        |  |        |        |   |        |     |     |
| 665 | 685.7   | 686.2  | 686.5  | 686.5   | 686.5  | 686.3  | 686.6  | 686.8  | 686.7  | 686.5   | 686.8  | 665 |     |
|     | 7+00  |        | 8+00   |   | 9+00   |        | 10+00  |        |        |   |        |     |     |

