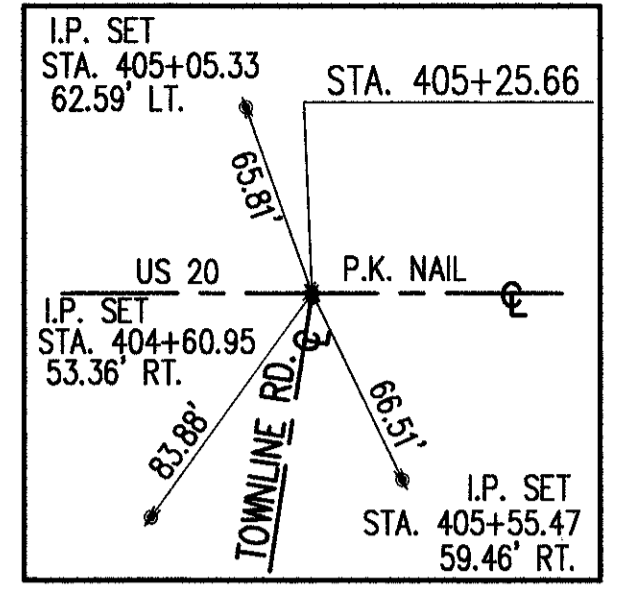
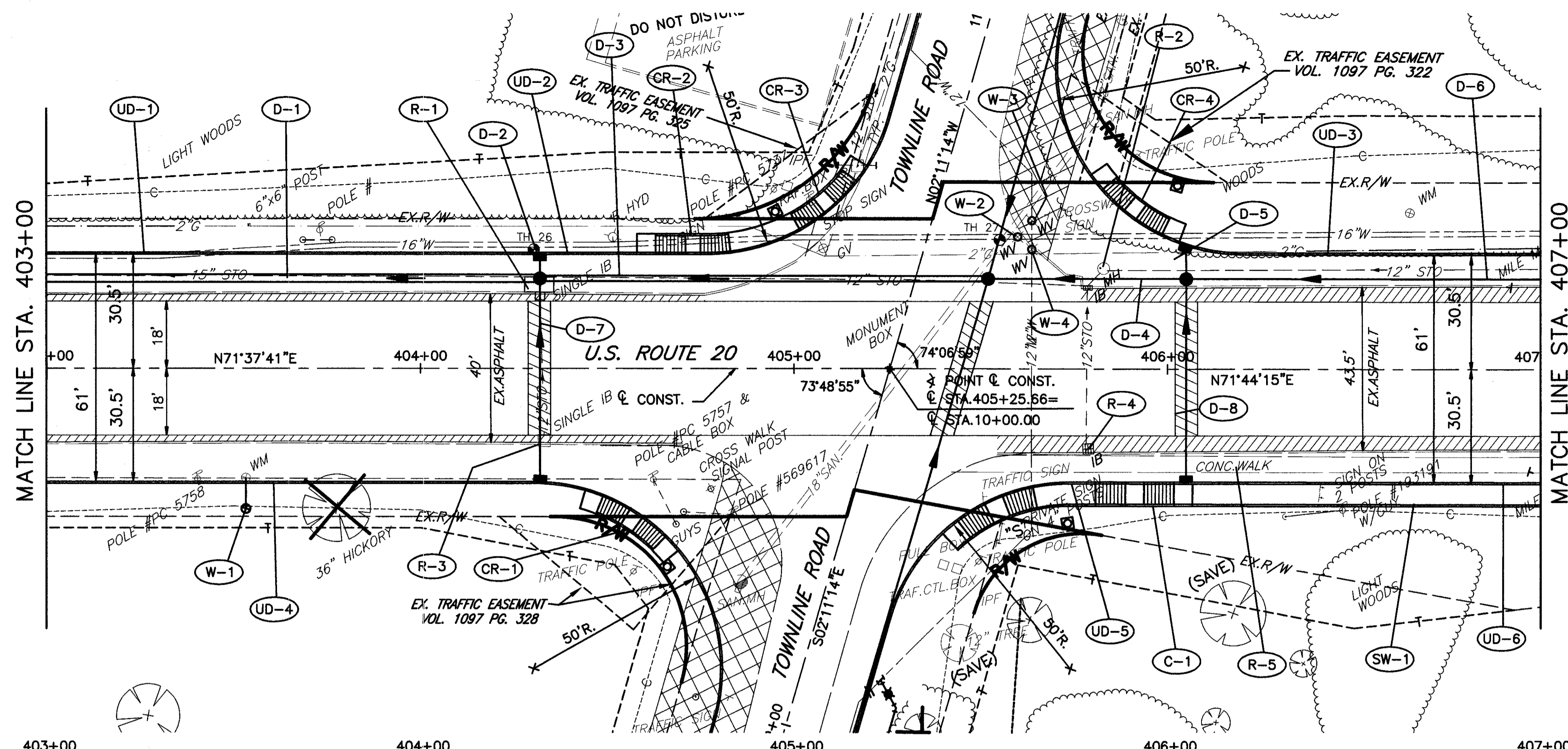


H:\1998\98404\DWG\PRD093.DWG

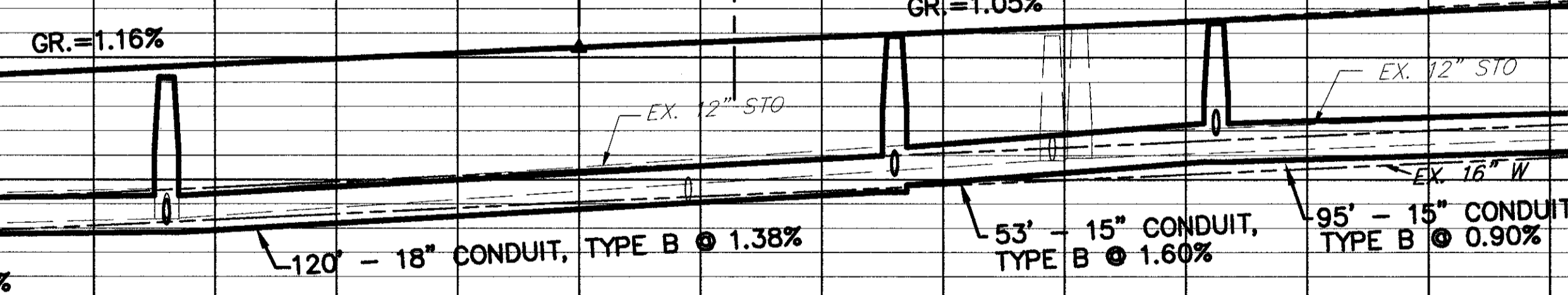


- FULL DEPTH PAVEMENT REPAIR AS PER SECTION 603.09 OF THE CONSTRUCTION AND MATERIALS SPECIFICATIONS.
- TEMPORARY PAVEMENT
- EXISTING PAVEMENT TO BE REMOVED

Station	683.10	683.68	684.26	684.84	685.42	685.95	686.47	687.00	687.52
695									
690									
685									
680									
675									
670									
665									
660									
	683.08	683.66	684.27	684.87	685.44	685.99	686.56	687.21	687.76

MATCH LINE STA. 403+00

MATCH LINE STA. 407+00



MH NO. 3, AS PER PLAN  
STA. 404+32.00, 24.0' LT.  
RIM 684.22  
15" INV. 678.87 NW  
15" INV. 678.18 SE  
18" INV. 677.84 NE  
24" INV. 677.34 SW

EX. STO. IB  
STA. 404+32.04, 19.5' LT.  
RIM 684.07  
15" INV. 678.38 W  
12" INV. 678.38 E  
12" INV. 678.43 S

MH NO. 3  
STA. 405+52.00, 24.0' LT.  
RIM 685.56  
15" INV. 680.19 N  
15" INV. 679.74 S  
15" INV. 679.74 NE  
18" INV. 679.49 SW

EX. STO. IB  
STA. 405+78.00, 19.0' LT.  
RIM 685.91  
12" INV. 680.79 W  
12" INV. 680.80 S  
12" INV. 680.80 NE

MH NO. 3  
STA. 406+05.00, 24.0' LT.  
RIM 686.12  
15" INV. 681.60 NW  
15" INV. 681.48 SE  
15" INV. 680.59 NE & SW

EX. STO. MH  
STA. 405+82.50, 25.0' LT.  
RIM 686.30  
12" INV. 680.90 SW  
12" INV. 680.89 E

SCALE IN FEET

20  
0  
-20

---

CALCULATED

CHECKED

---

US ROUTE 20 PLAN AND PROFILE  
STA. 403+00 TO STA. 407+00

---

LAK - 20 - 18.72

---

204

441