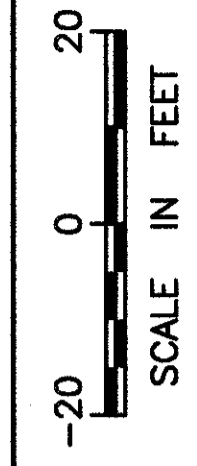
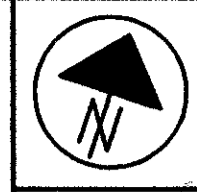
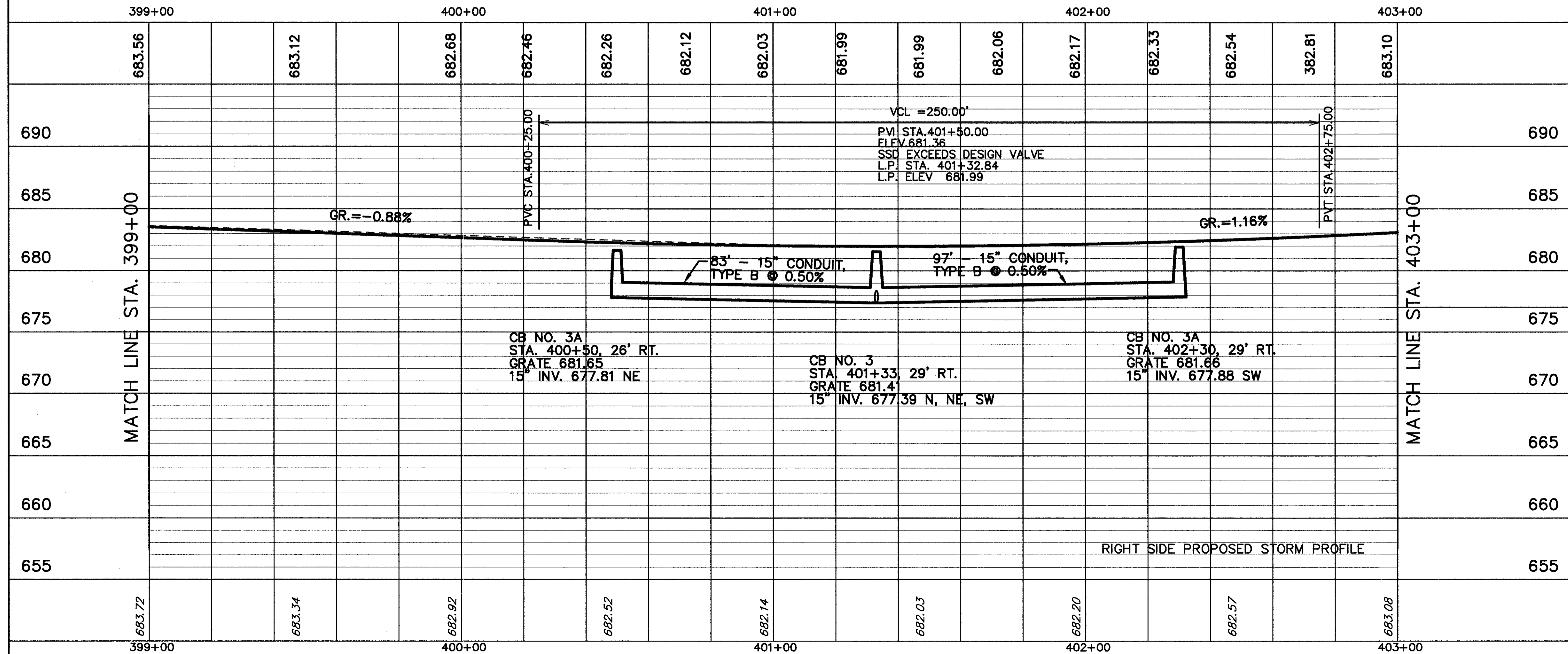


H:\1998\98404\DWG\PRD092.DWG (RIGHT SIDE STORM PROFILE)



CHECKED

US ROUTE 20 PROFILE
 STA. 399+00 TO STA. 403+00

LAK - 20 - 18.72

SEE PREVIOUS SHEET FOR LEFT SIDE PROPOSED STORM PROFILE