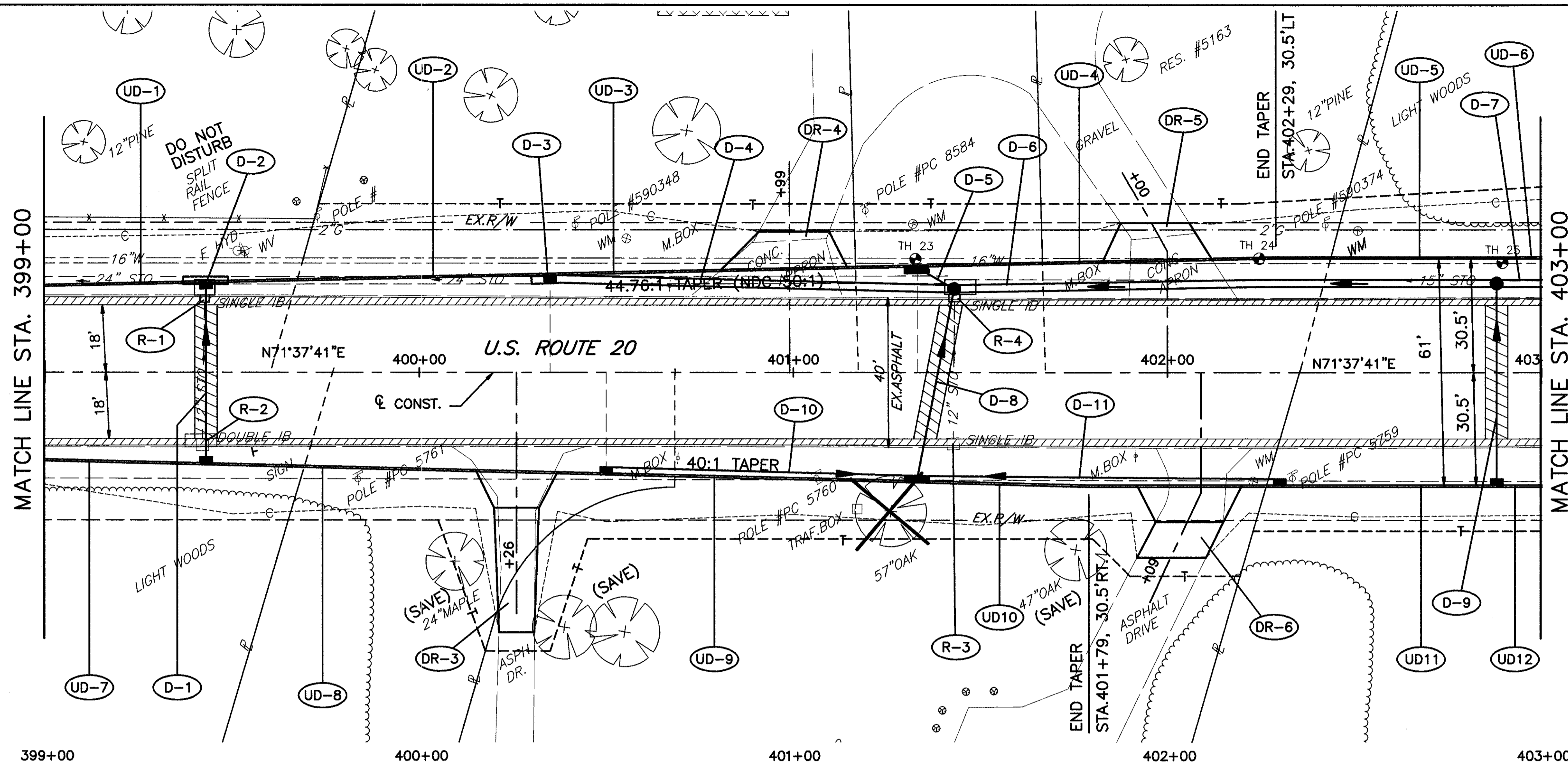


H:\1998\98404\DWG\PRD092.DWG (LEFT SIDE STORM PROFILE)



BENCH MARK #47
TOP SW CORNER CONC. PORCH
OF HSE. #5163
STA. 402+13± 144± LT.
ELEV. 685.48

FULL DEPTH PAVEMENT REPAIR
AS PER SECTION 603.09 OF
THE CONSTRUCTION AND
MATERIALS SPECIFICATIONS.

EXISTING PAVEMENT
TO BE REMOVED



CALCULATED
CHECKED

US ROUTE 20 PLAN AND PROFILE
STA. 399+00 TO STA. 403+00

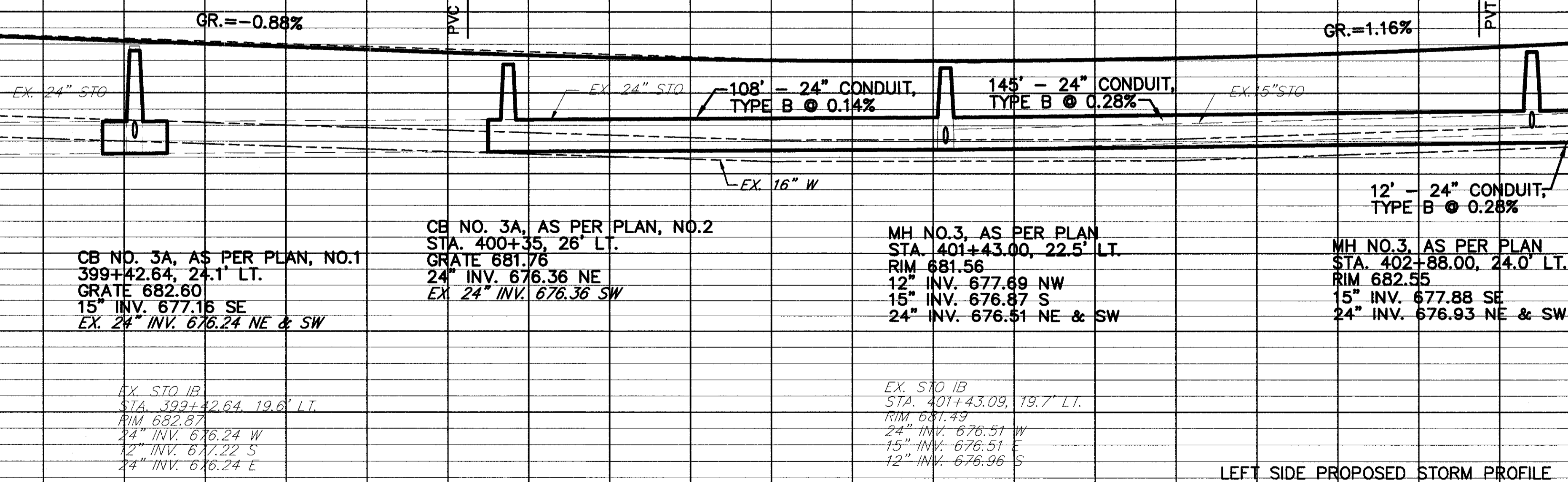
LAK - 20 - 18.72

201
441

Station	Elevation	Profile Description	Station	Elevation
399+00	683.56		403+00	683.10
	683.12			
	682.68			
	682.46			
	682.26			
	682.12			
	682.03			
	681.99			
	681.99	VCL = 250.00'		
	682.06	PVI STA. 401+50.00 ELEV. 681.36		
	682.17	SSD EXCEEDS DESIGN VALVE L.P. STA. 401+32.84 L.P. ELEV. 681.99		
	682.33			
	682.54			
	382.81			
	683.10			
690			690	
685			685	
680		GR. = -0.88%	680	
675			675	
670			670	
665			665	
660			660	
655			655	
399+00	683.72		403+00	683.08
	683.34			
	682.92			
	682.52			
	682.14			
	682.03			
	682.20			
	682.57			
	683.08			

MATCH LINE STA. 399+00

MATCH LINE STA. 403+00



LEFT SIDE PROPOSED STORM PROFILE

SEE NEXT SHEET FOR RIGHT SIDE
PROPOSED STORM PROFILE