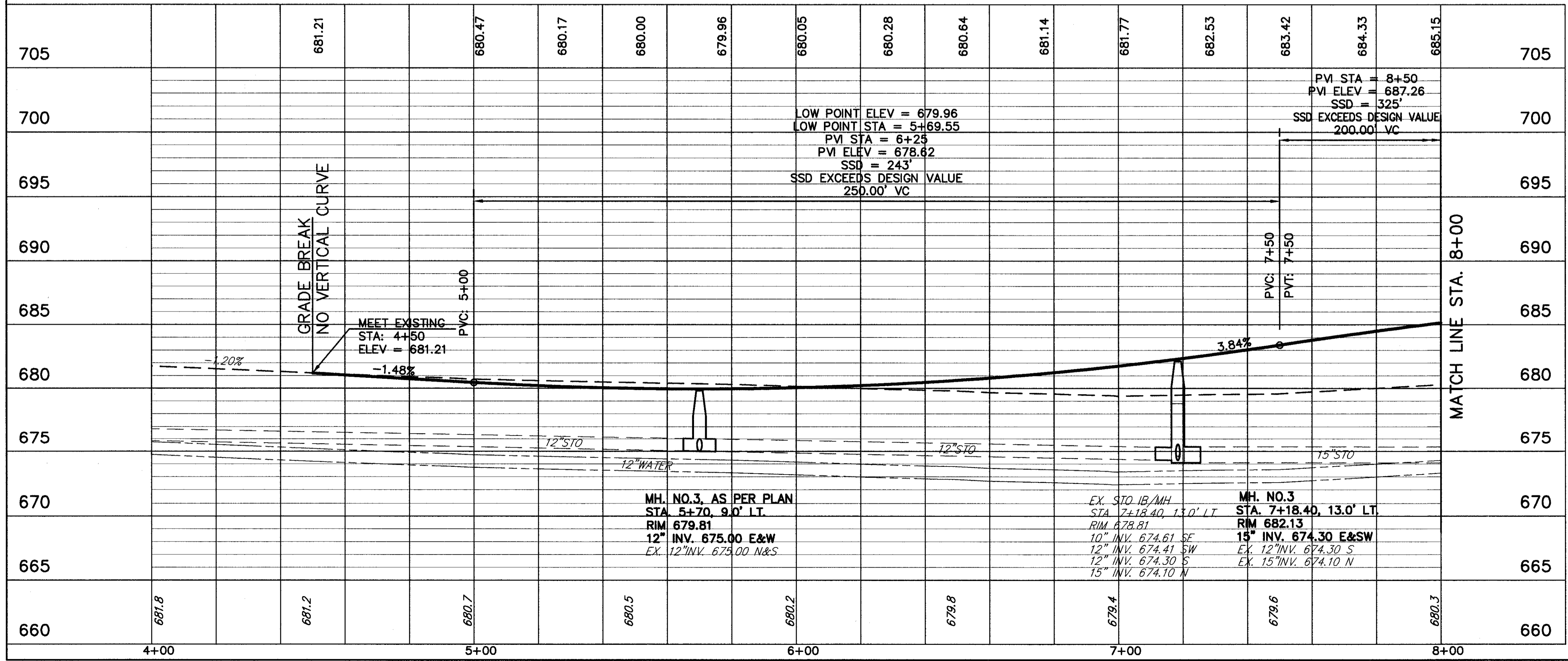
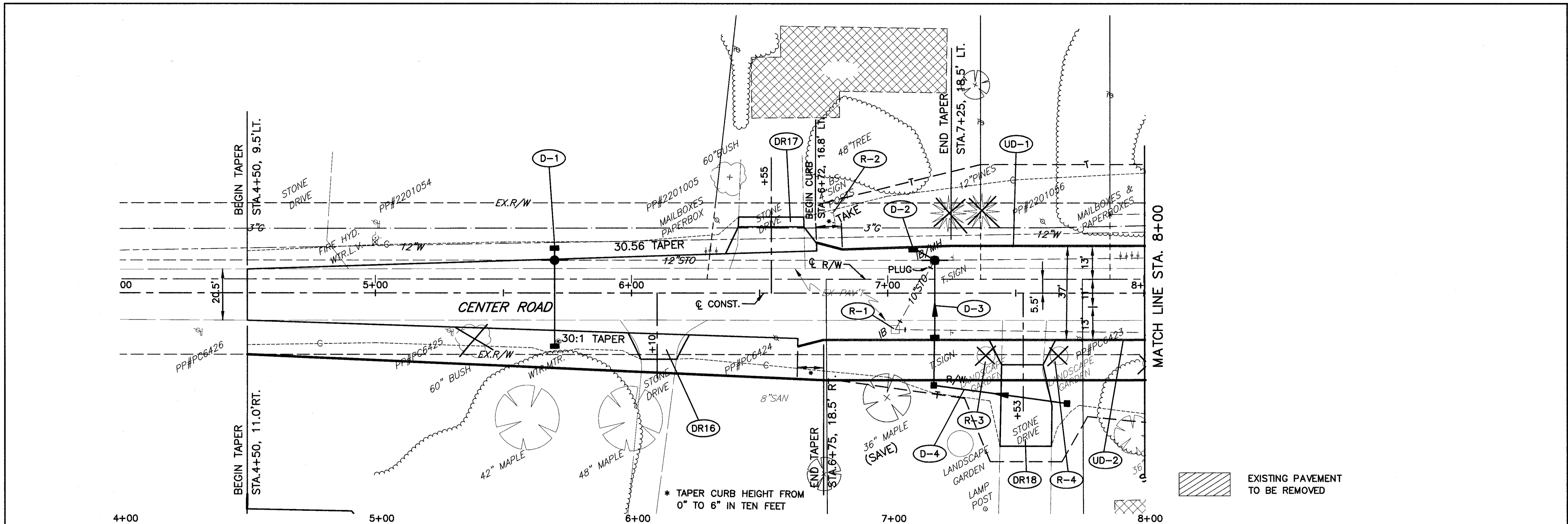



H:\1998\98404\DWG\SSPR21.DWG



680	52'-15" CONDUIT, TYPE B @ 1.00%	680
675		675
670	CB NO. 2-2B STA. 7+18, 36.5' RT. GRATE 679.72 15" INV. 674.80 N&W	670
665	CB NO. 2-2B STA. 7+70, 43.5' RT. GRATE 678.60 15" INV. 675.32 S	665



SCALE IN FEET  
0 20

CALCULATED  
CHECKED

CENTER ROAD PLAN AND PROFILE  
STA. 4+00 TO STA. 8+00

LAK - 20 - 18.72

187  
441