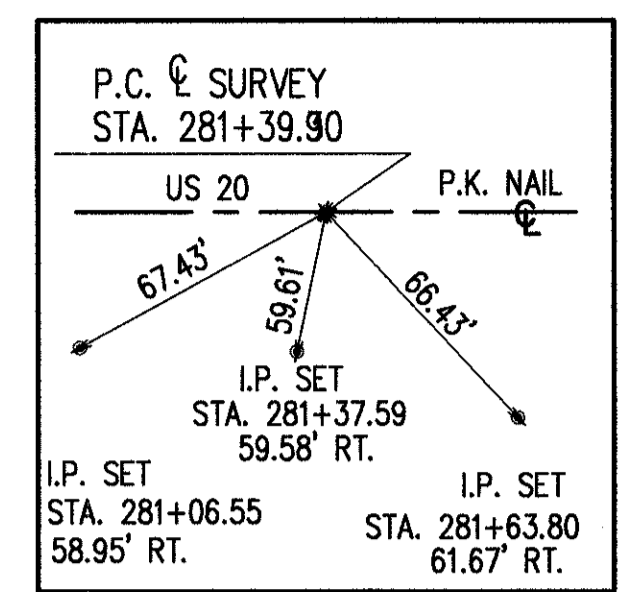
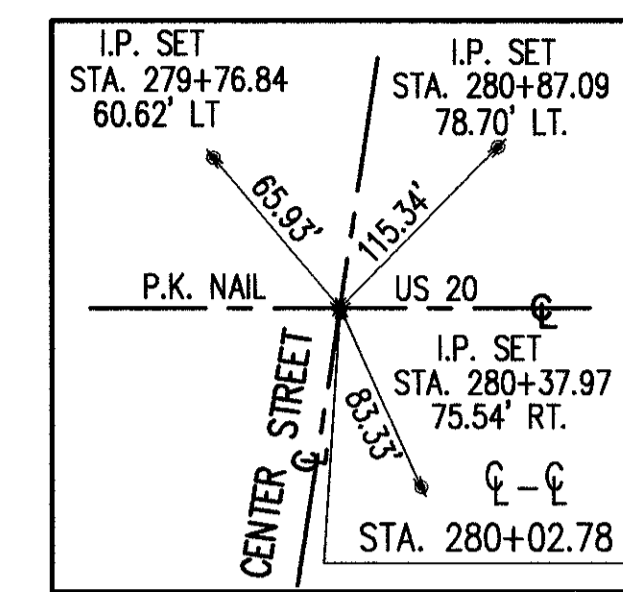
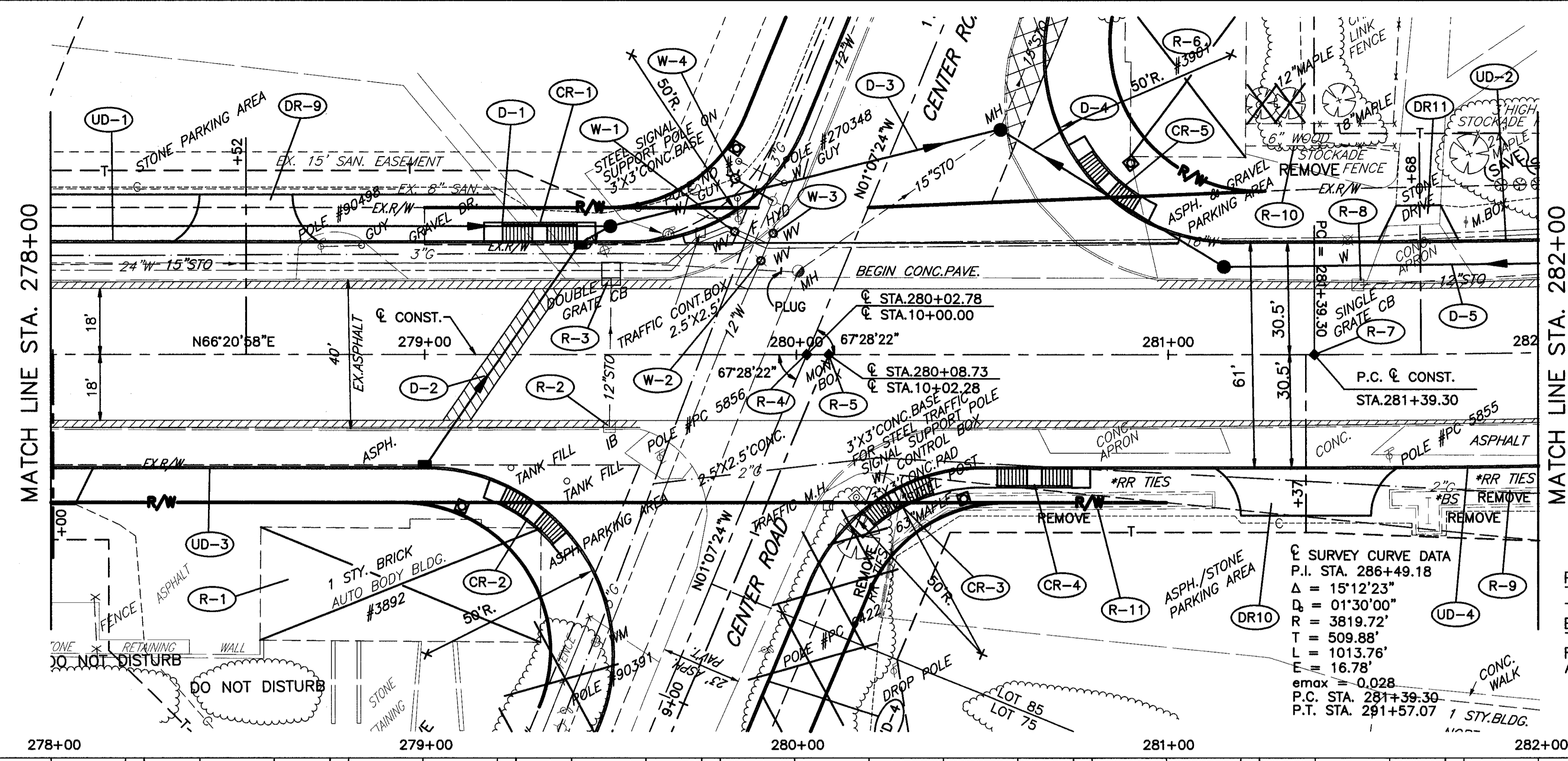


CALCULATED
CHECKED

US ROUTE 20 PLAN AND PROFILE
STA. 278+00 TO STA. 282+00

LAK - 20 - 18.72

171
441



BENCH MARK #29
 TOP SW CORNER CONC. PORCH
 AT FRONT OF BLDG. #3901
 STA. 280+90± 54± LT.
 ELEV. 687.10

700	690.58	690.43	690.25	690.02	689.76	689.45	689.11	688.73	688.32	687.50	687.12	686.79	686.52	686.30	686.13	686.02	700
695	VCL = 210.00' PM STA. 278+75.00 ELEV. 690.37 SSD EXCEEDS DESIGN VALUE SSD = 609'															695	
690	GR. = -0.32% (NDC 0.50%)															690	
685	EX. 15" STO															685	
680	EX. 24" W															680	
675	150' - 15" CONDUIT, TYPE C @ 1.90%															675	
670	MH NO. 3 STA. 279+50.00, 35.0' LT. RIM 689.09 15" INV. 683.43 SW 15" INV. 677.35 NE & SW															670	
665	EX. STO MH STA. 280+09.54, 23.0' LT. RIM 687.63 15" INV. 674.07 W 15" INV. 672.92 NE 15" INV. 674.47 SW															665	
660	EX. STO MH STA. 279+50.19, 19.6' LT. RIM 688.56 15" INV. 683.66 W 15" INV. 683.78 E 12" INV. 684.81 S															660	
	690.57	690.25	689.77	689.11	688.30	687.54	686.97	686.55	686.16							686.16	
	278+00	279+00	280+00	281+00	282+00							282+00					

FULL DEPTH PAVEMENT REPAIR AS PER SECTION 603.09 OF THE CONSTRUCTION AND MATERIALS SPECIFICATIONS.

EXISTING PAVEMENT TO BE REMOVED