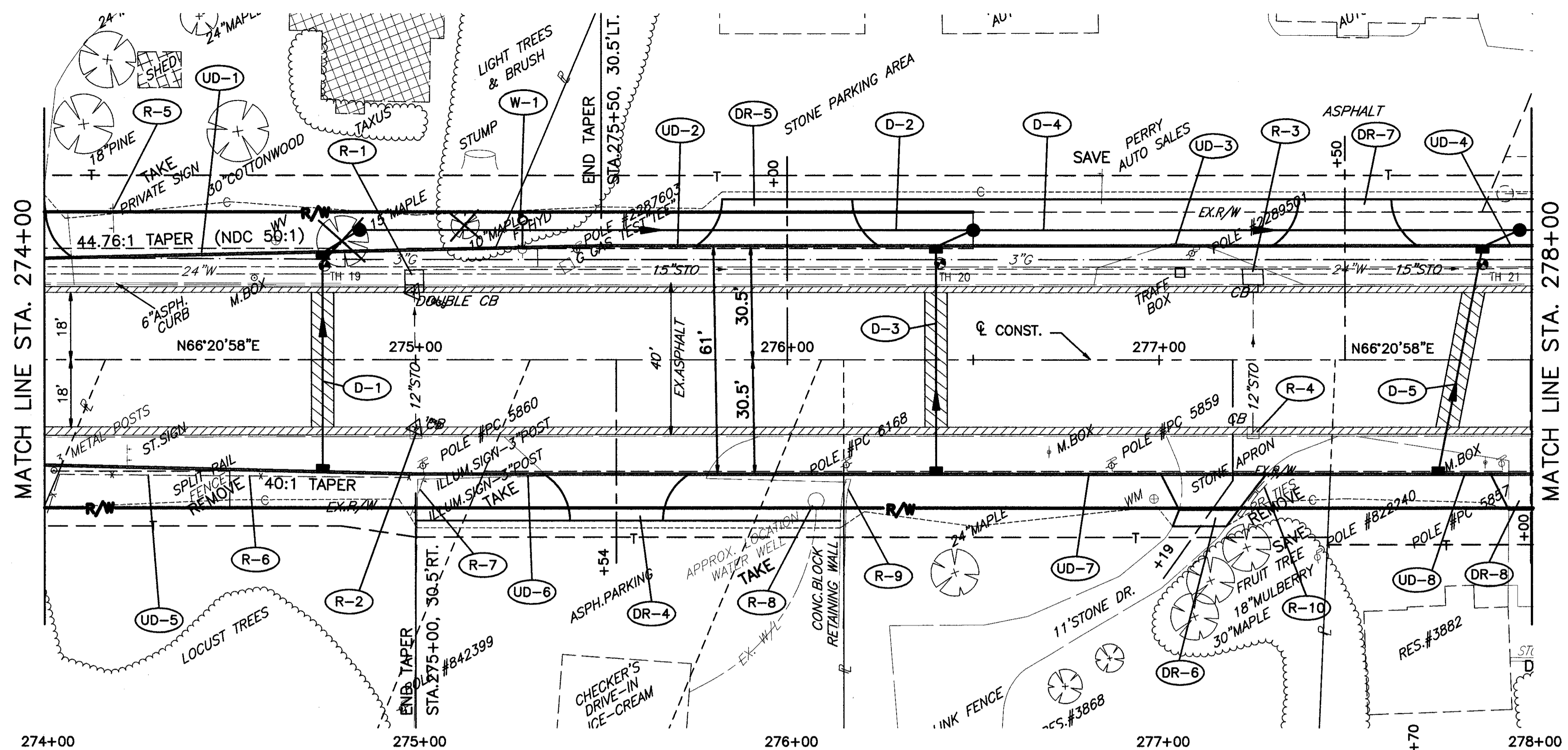
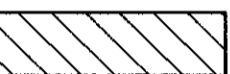



H:\1998\98404\DWG\PRC060.DWG



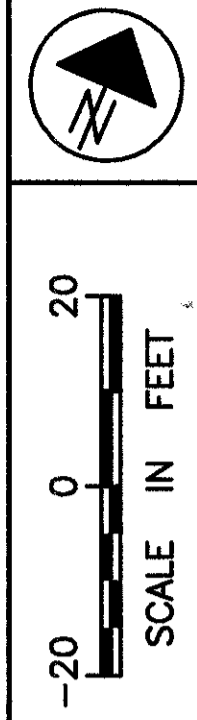
 FULL DEPTH PAVEMENT REPAIR AS PER SECTION 603.09 OF THE CONSTRUCTION AND MATERIALS SPECIFICATIONS.  
 EXISTING PAVEMENT TO BE REMOVED

691.89	691.73	691.57	691.41	691.25	691.09	690.93	690.77	690.71	690.58
700									700
695									695
690	GR. = -0.32% (NDC 0.50%)					GR. = -0.32% (NDC 0.50%)			690
685									685
680									680
675			MH NO.3 STA. 274+85.00, 35.0' LT. RIM 691.25 15" INV. 685.87 SW 15" INV. 682.22 NE						675
670			EX. STO IB STA. 274+99.66, 19.2' LT. RIM 690.94 12" INV. 687.19 S 15" INV. 686.50 E						670
665									665
691.84	691.73	691.62	691.44	691.25	691.14	690.92	690.76	690.57	
274+00		275+00		276+00		277+00		278+00	

VCL = 210.00'  
 PVI STA. 278+75.00  
 ELEV. 690.37  
 SSD EXCEEDS  
 DESIGN VALUE  
 SSD = 609'

MH NO.3  
 STA. 277+97.00, 35.0' LT.  
 RIM 690.57  
 15" INV. 684.81 SW  
 15" INV. 680.35 NE & SW

EX. STO IB  
 STA. 277+25.32, 19.6' LT.  
 RIM 690.33  
 15" INV. 685.34 W  
 15" INV. 685.34 E  
 12" INV. 686.32 S



CALCULATED  
CHECKED

US ROUTE 20 PLAN AND PROFILE  
STA. 274+00 TO STA. 278+00

LAK - 20 - 18.72