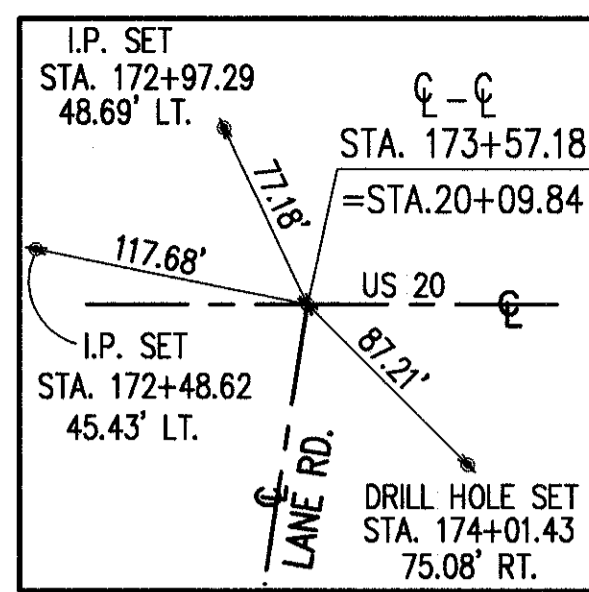
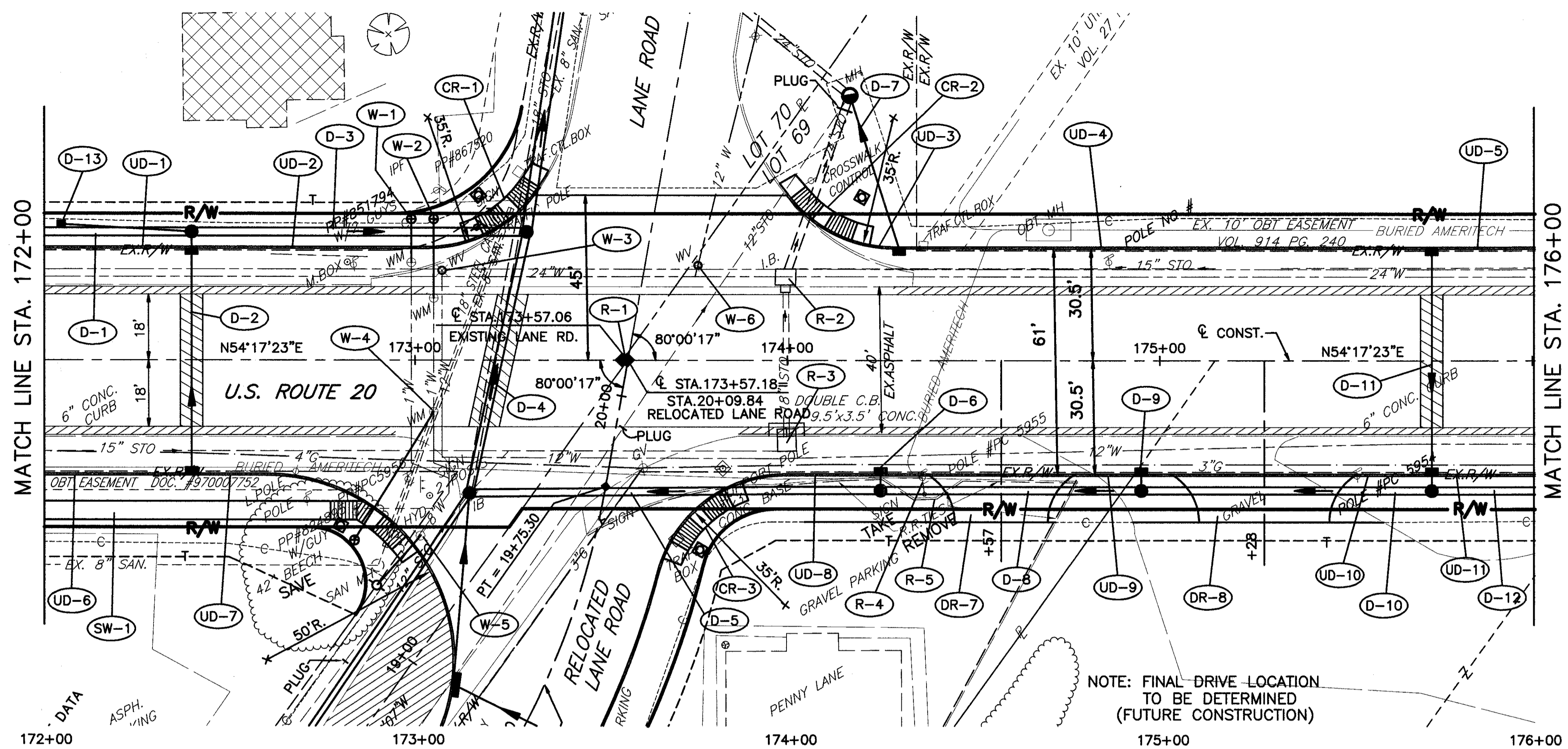
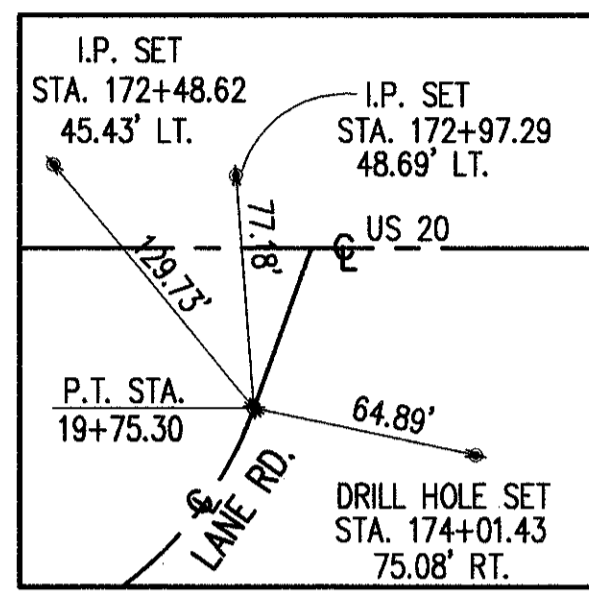
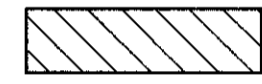
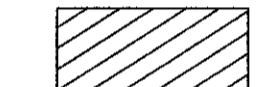


H:\1998\98404\DWG\PRB033.DWG



BENCH MARK #16
TOP NW CORNER CONC. PORCH
AT FRONT OF CALICO REALTY
CRAFTS BLDG. AT SE CORNER
US 20 AND LANE ROAD
STA. 174+00± 74± RT.
ELEV. 686.57



 FULL DEPTH PAVEMENT REPAIR
AS PER SECTION 603.09 OF
THE CONSTRUCTION AND
MATERIALS SPECIFICATIONS.
 EXISTING PAVEMENT
TO BE REMOVED

NOTE: FINAL DRIVE LOCATION
TO BE DETERMINED
(FUTURE CONSTRUCTION)

684.29		684.17		684.05		683.93		683.87		683.84		683.87		683.93		684.06		684.19		684.31		
690	INLET, SIDE DITCH STA. 172+05.00, 37.0' LT. GRATE 683.90 12" INV. 679.90 NE						VCL = 60.00' PVI STA. 174+00.00 ELEV. 683.81 SSD EXCEEDS DESIGN VALUE SSD > 825' LOW POINT ELEV = 683.85 LOW POINT STA. = 173+99.39															
685	35' - 12" CONDUIT, TYPE C @ 1.00%		GR. = -0.24% (NDC 0.50%)		PVC STA. 173+70.00 EL = 683.88				PVT STA. 174+30.00 EL = 683.89		GR. = 0.25% (NDC 0.50%)											
680	EX. 15" STO						EX. 12" STO				EX. 15" STO											
675	EX. 8" SAN.						EX. 12" W				EX. 24" W											
670	40' - 27" CONDUIT, TYPE C @ 0.28%		90' - 27" CONDUIT, TYPE B, 706.02, 1500 D-LOAD @ 0.28%		110' - 24" CONDUIT, TYPE B @ 0.50%		70' - 24" CONDUIT, TYPE C @ 0.50%		78' - 24" CONDUIT, TYPE C @ 0.50%		27' - 24" CONDUIT, TYPE C @ 0.50%											
665	MH NO. 3, AS PER PLAN STA. 172+10.00, 35.0' LT. RIM 684.50 12" INV. 679.55 SW 15" INV. 673.94 SE 24" INV. 671.72 SW 27" INV. 667.98 NE		MH NO. 3 STA. 173+14.62, 35.8' RT. RIM 683.82 15" INV. 678.00 SE 18" INV. 675.91 S 24" INV. 671.69 NE 30" INV. 671.09 NW		MH NO. 3 STA. 173+30.00, 35.0' LT. RIM 682.98 15" INV. 667.75 SW 27" INV. 670.73 S 30" INV. 667.50 N		MH NO. 3, AS PER PLAN STA. 174+25.00, 35.0' RT. RIM 684.00 15" INV. 678.23 NW 24" INV. 672.24 NE & SW		MH NO. 3, AS PER PLAN STA. 174+95.00, 35.0' RT. RIM 684.25 15" INV. 678.42 NW 24" INV. 672.59 NE & SW		MH NO. 3, AS PER PLAN STA. 175+73.00, 35.0' RT. RIM 684.50 15" INV. 673.80 NW 24" INV. 672.98 NE & SW											
660	EX. SAN. MH STA. 172+89.97, 55.4' RT. RIM 683.74 8" INV. 672.85 S 8" INV. 672.75 N		EX. STO. B STA. 173+14.62, 35.8' RT. RIM 682.92 12" INV. 680.00 SW 12" INV. 680.39 NE 18" INV. 674.00 N		EX. STO. B STA. 173+99.57, 20.1' LT. RIM 683.23 18" INV. 671.89 S 24" INV. 671.87 NE 18" INV. 670.52 E & W		EX. STO. B STA. 173+99.75, 20.3' RT. RIM 683.11 15" INV. 679.34 W 18" INV. 678.46 N		EX. MH STA. 174+16.76, 72.05' LT. RIM 681.99 24" INV. 676.69 S 12" INV. 675.49 SW 18" INV. 675.39 NW													
655	684.18		683.91		683.88		683.88		683.99		684.09		684.28		684.42							

US ROUTE 20 PLAN AND PROFILE
STA. 172+00 TO STA. 176+00

LAK - 20 - 18.72

145
441