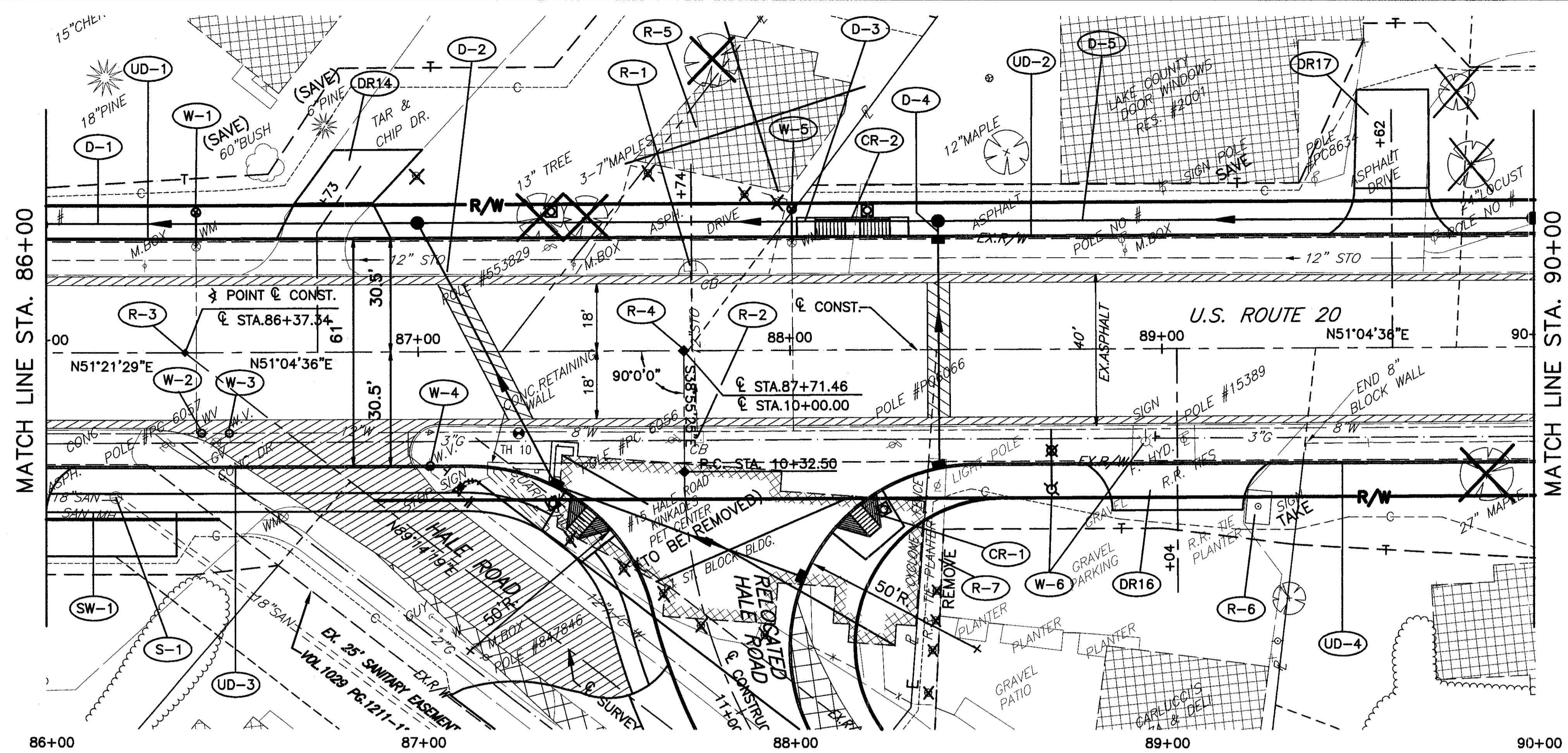
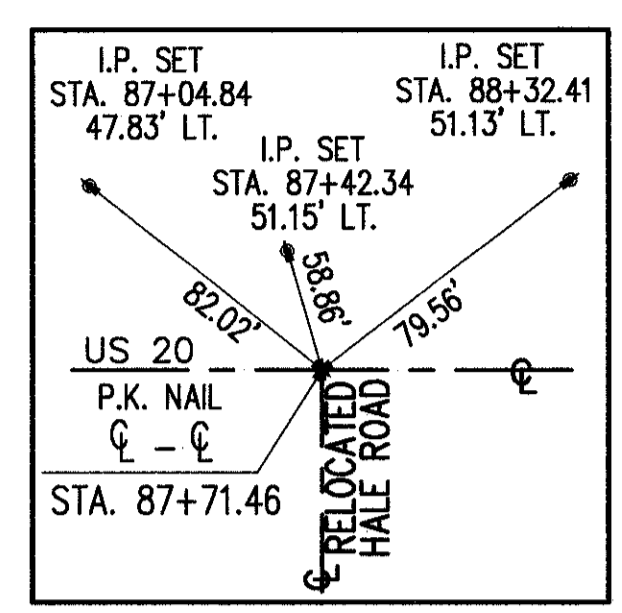
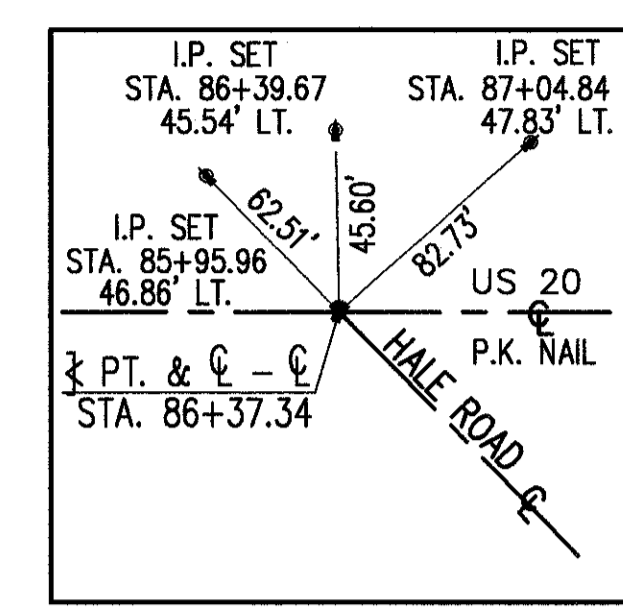



H:\1998\98404\DWG\PRF4010.DWG

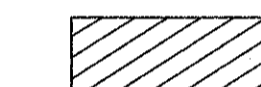


**BENCH MARK #6**  
 TOP SW CORNER CONC. SLAB AT  
 FRONT ENTRANCE TO BLDG.  
 # 2001 US 20  
 STA. 88+73± 45'± LT.  
 ELEV. 686.14

**BENCH MARK #7**  
 TOP NW CORNER CONCRETE WALK  
 AT NW CORNER BLDG.  
 STA. 88+84± 77± RRT.  
 ELEV. 687.71



 FULL DEPTH PAVEMENT REPAIR  
 AS PER SECTION 603.09 OF  
 THE CONSTRUCTION AND  
 MATERIALS SPECIFICATIONS.

 EXISTING PAVEMENT  
 TO BE REMOVED



US ROUTE 20 PLAN AND PROFILE  
 STA. 86+00 TO STA. 90+00

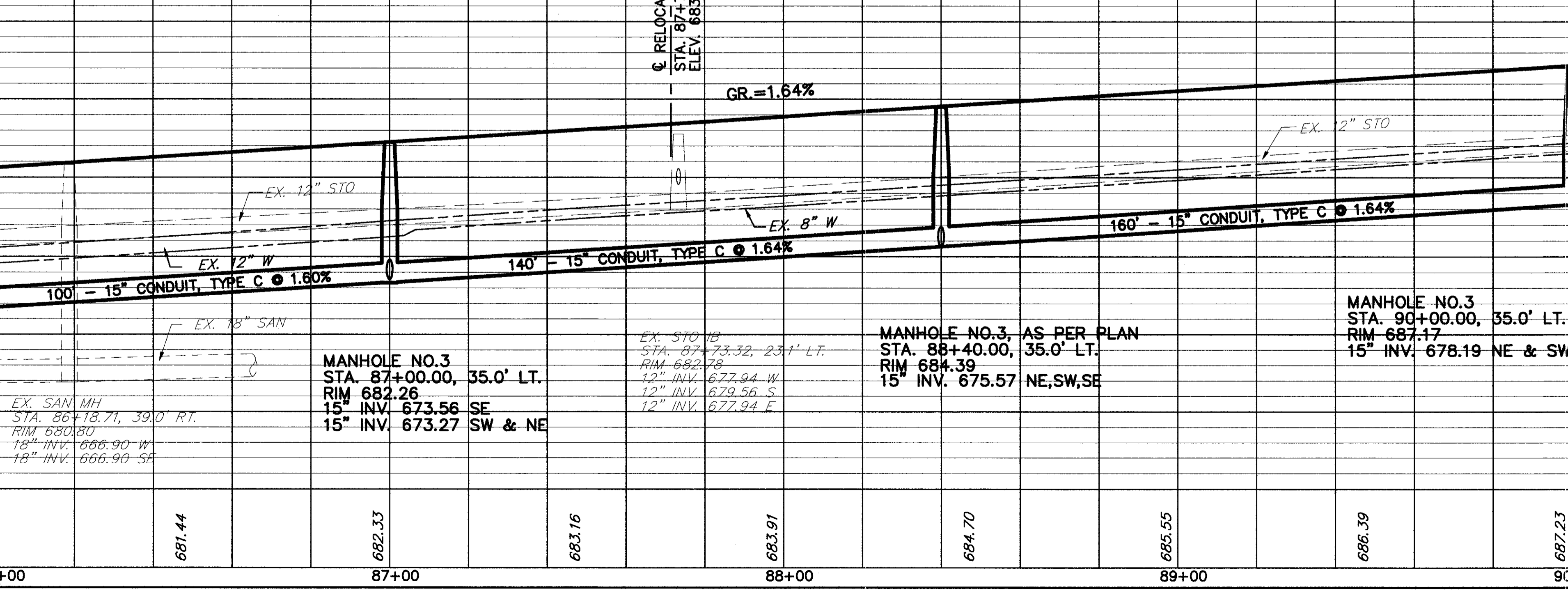
LAK - 20 - 18.72

94  
441

Profile Station	86+00	87+00	88+00	89+00	90+00
660	680.63	681.44	682.33	683.16	684.70
665					
670					
675					
680					
685					
690					
695					
680.62					
681.44					
682.26					
683.08					
683.90					
684.72					
685.54					
686.36					
687.18					

MATCH LINE STA. 86+00

MATCH LINE STA. 90+00



**MANHOLE NO.3**  
 STA. 87+00.00, 35.0' LT.  
 RIM 682.26  
 15" INV. 673.56 SE  
 15" INV. 673.27 SW & NE

**EX. STO 10**  
 STA. 87+73.32, 23' LT.  
 RIM 682.78  
 12" INV. 677.94 W  
 12" INV. 679.56 S  
 12" INV. 677.94 E

**MANHOLE NO.3, AS PER PLAN**  
 STA. 88+40.00, 35.0' LT.  
 RIM 684.39  
 15" INV. 675.57 NE,SW,SE

**MANHOLE NO.3**  
 STA. 90+00.00, 35.0' LT.  
 RIM 687.17  
 15" INV. 678.19 NE & SW