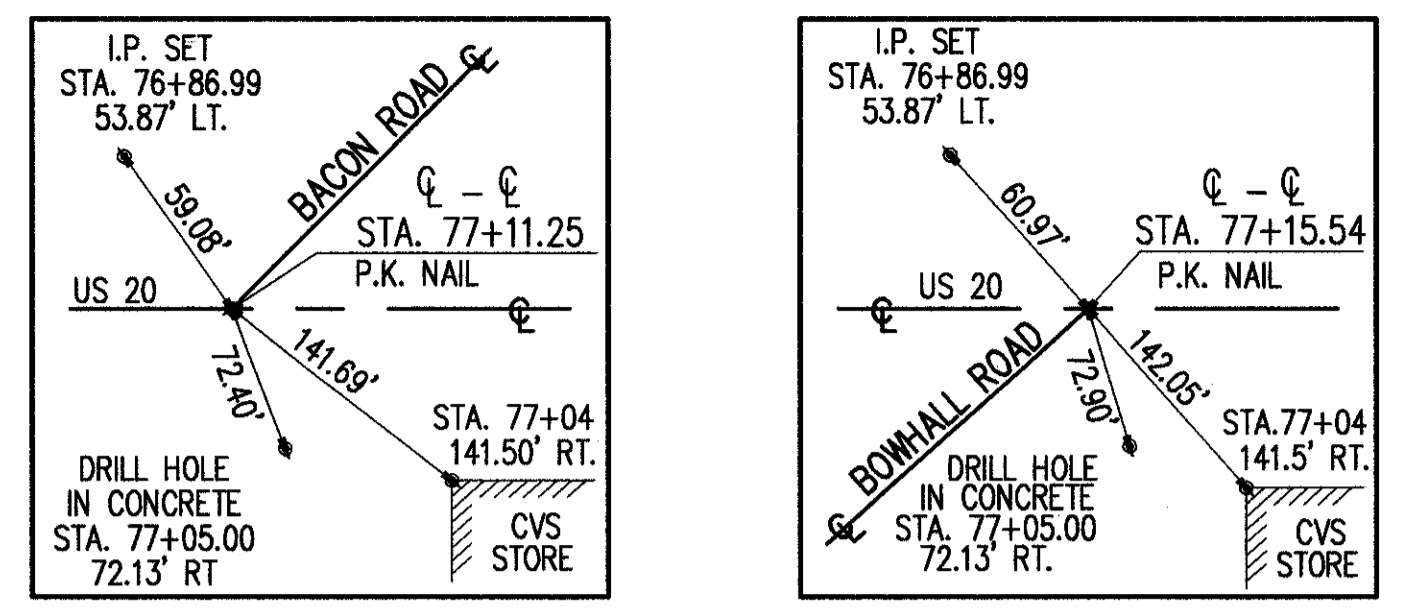
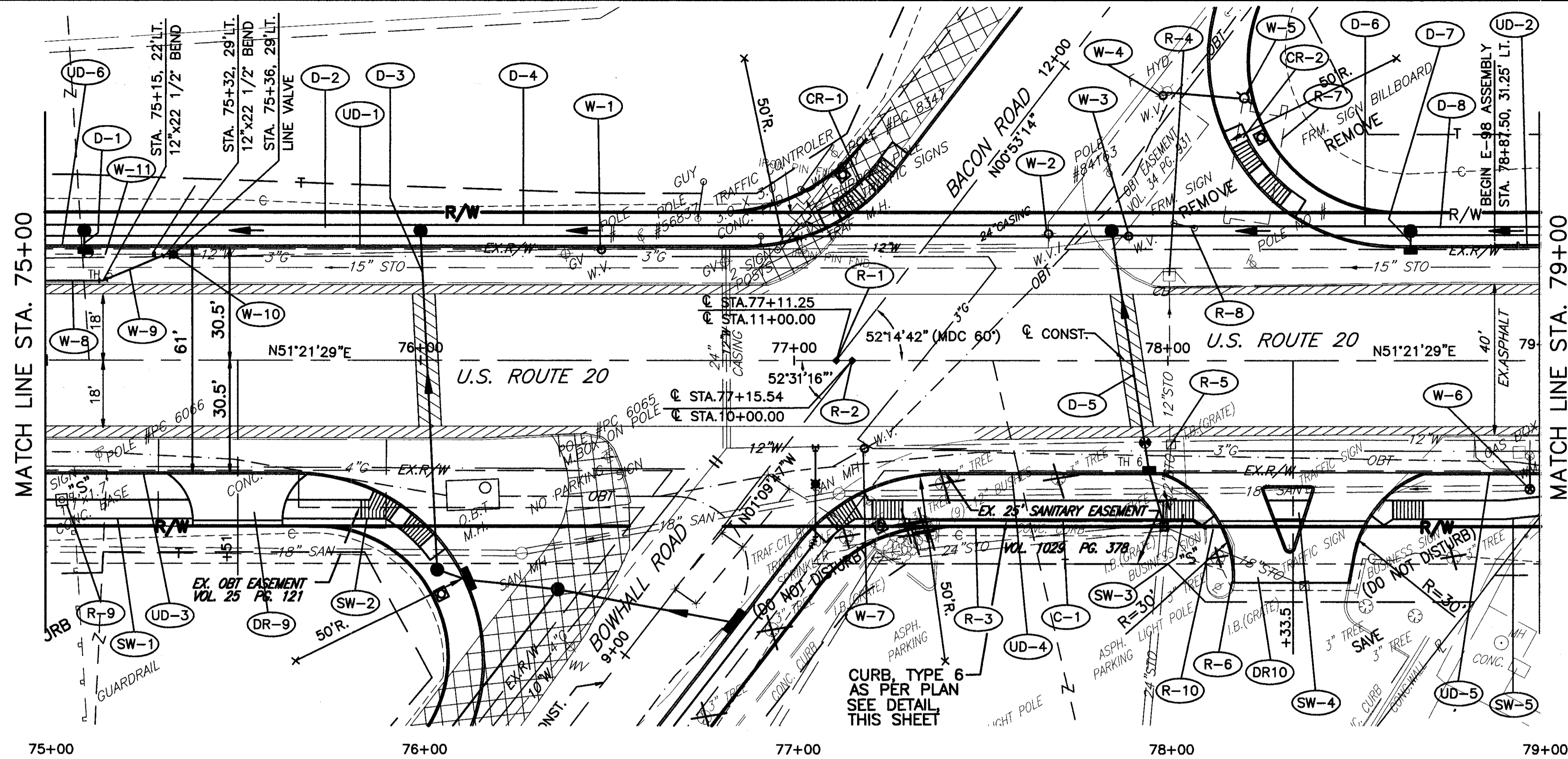


H:\1998\98404\DWG\PRFA007.DWG



- FULL DEPTH PAVEMENT REPAIR AS PER SECTION 603.09 OF THE CONSTRUCTION AND MATERIALS SPECIFICATIONS.
- EXISTING PAVEMENT TO BE REMOVED
- TEMPORARY PAVEMENT

674.31	674.46	674.61				675.21	675.36	675.51
SEE INTERSECTION DETAIL SHEET NO. 258								
675	10' - 36" CONDUIT, TYPE C @ 0.30% GR.=0.30% (NDC 0.50%)					GR.=0.30% (NDC 0.50%)		
670	EX. 15" STO		EX. 15" STO			EX. 15" STO		
665	90' - 36" CONDUIT, TYPE C @ 0.30%		185' - 36" CONDUIT, TYPE B @ 0.30%			80' - 30" CONDUIT, TYPE B @ 0.30%		
660	PROPOSED 12" WATER MAIN EX. 18" SAN		EX. 18" SAN			EX. 18" SAN		
655	MANHOLE NO.3, AS PER PLAN STA. 75+10.00, 35.0' LT. RIM 674.27 15" INV. 669.58 SE 36" INV. 663.70 NE&SW		MANHOLE NO.3 STA. 76+00.00, 35.0' LT. RIM 674.56 18" INV. 665.56 SE 36" INV. 663.97 NE&SW			MANHOLE NO.3 STA. 77+85.00, 35.0' LT. RIM 674.53 15" INV. 666.22 SE 30" INV. 665.03 NE 36" INV. 664.53 SW		
650						MANHOLE NO.3, AS PER PLAN STA. 78+65.00, 35.0' LT. RIM 675.39 15" INV. 667.18 SE 30" INV. 665.27 NE&SW		
674.21	674.34	674.51	674.67	674.82	674.89	675.11	675.22	675.36

