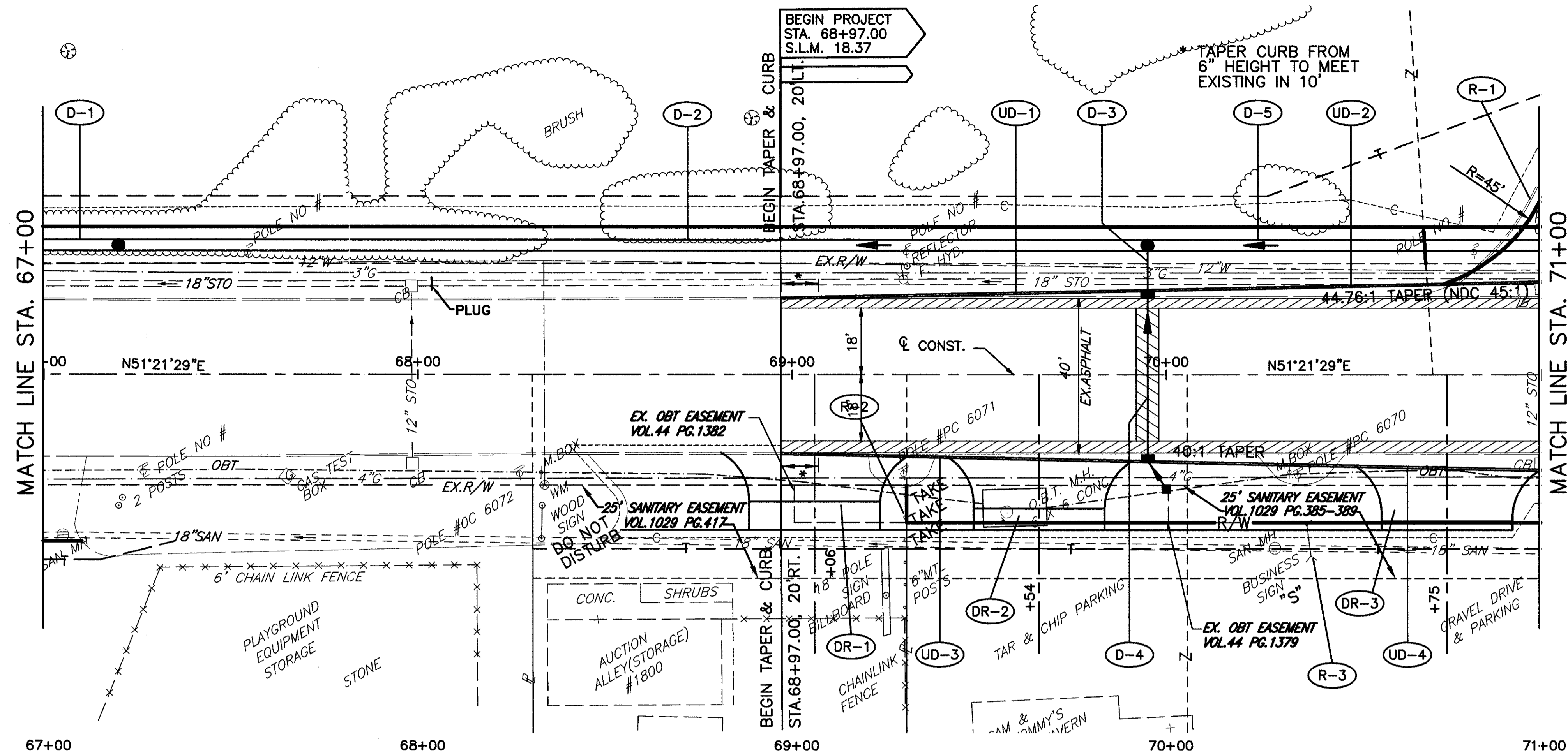


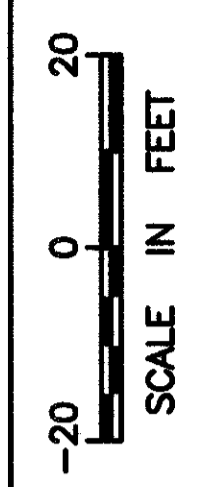
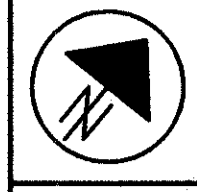
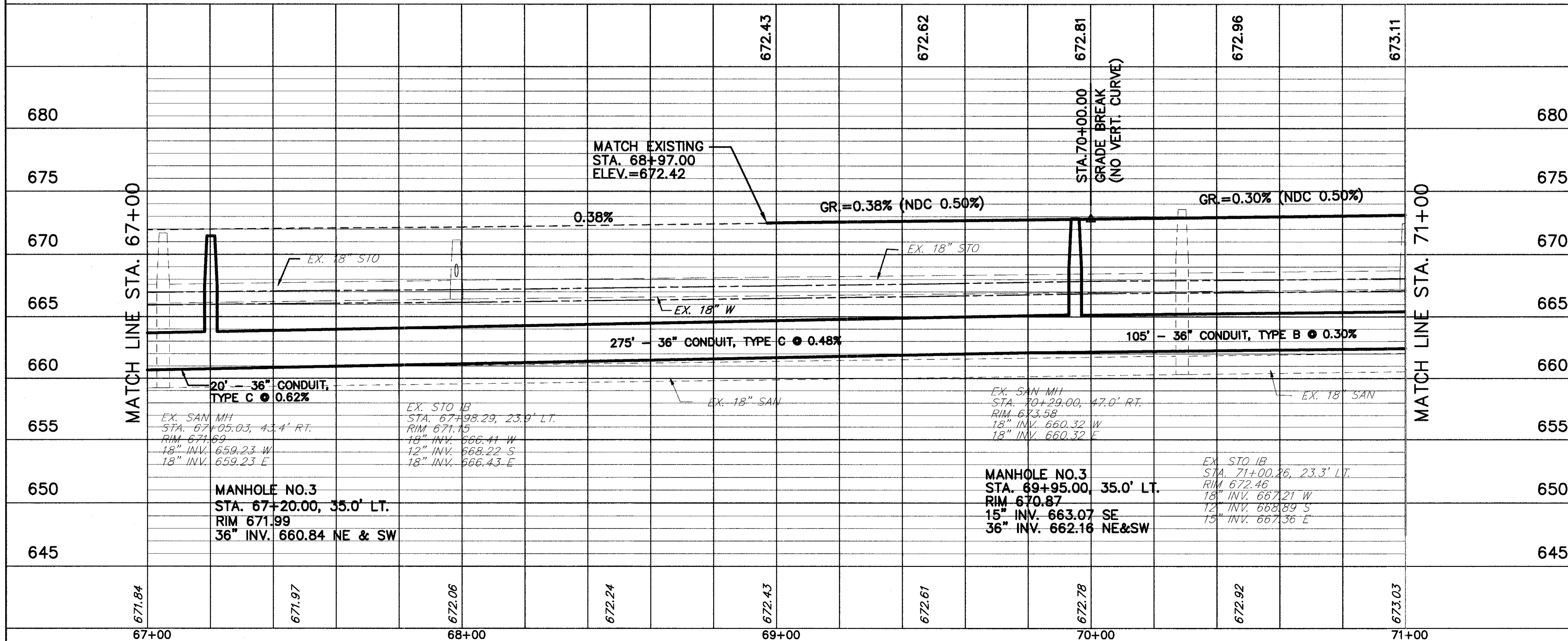
H:\1998\98404\DWG\PRF4005.DWG



FOR ESTIMATED QUANTITIES SEE SHEET 87.

NOTE:
ALL EXISTING CATCH BASINS TO BE REMOVED
SHALL INCLUDE PLUGGING OF ABANDONED
STORM SEWER PIPES AT EACH BASIN. (TYPICAL)

- FULL DEPTH PAVEMENT REPAIR AS PER SECTION 603.09 OF THE CONSTRUCTION AND MATERIALS SPECIFICATIONS.
- EXISTING PAVEMENT TO BE REMOVED



CALCULATED
CHECKED

US ROUTE 20 PLAN AND PROFILE
STA. 67+00 TO STA. 71+00

LAK - 20 - 18.72