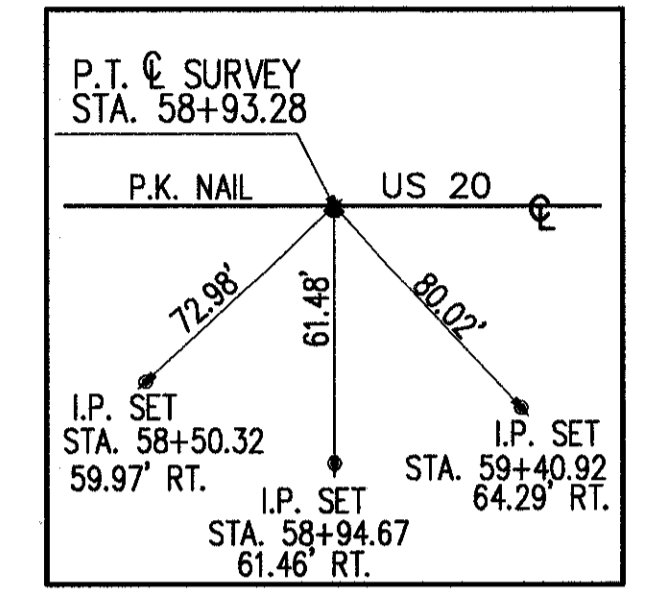
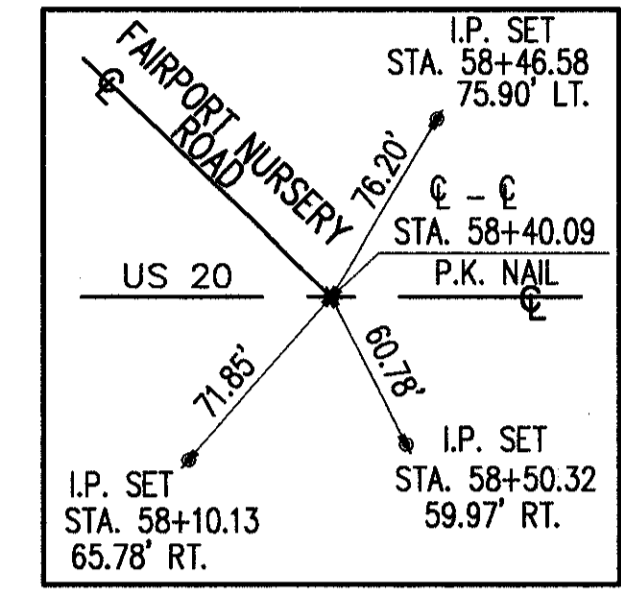
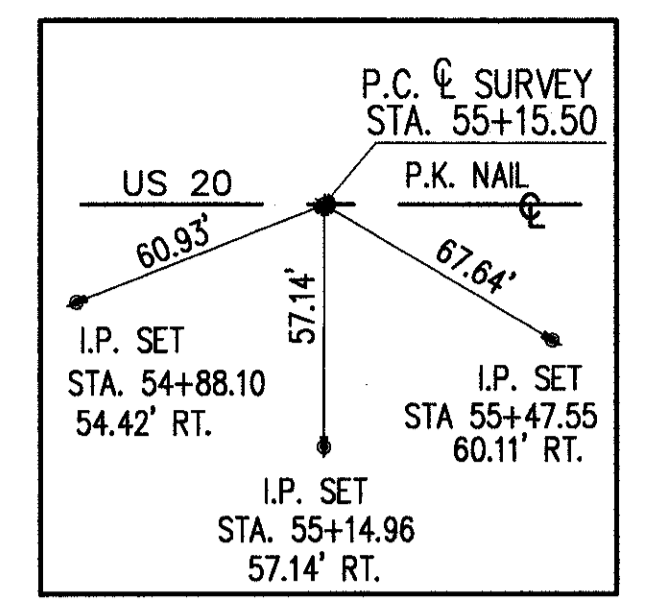


BENCH MARK #2
TOP IRON POLE WITH
RED CAP
STA. 58+46.6 ± 75.9 ± LT.
ELEV. 652.58

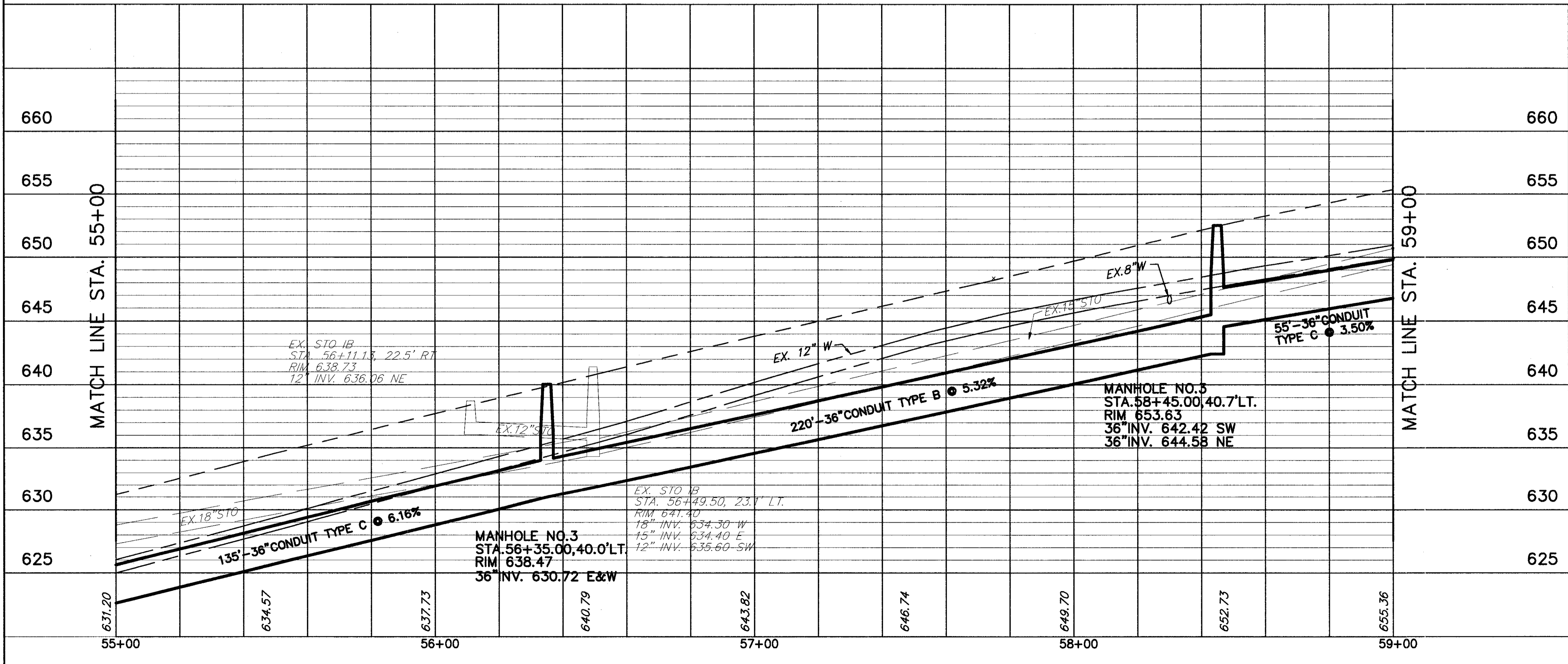


© SURVEY CURVE DATA
P.C. STA. 55+15.50
P.T. STA. 58+93.28
R = 954.93'
Δ = 22°40'00"
A = 377.78'
T = 191.39'
C = 375.32'
CHBRG = S56°23'59"W
Dc = 06°00'00"

FULL DEPTH PAVEMENT REPAIR
AS PER SECTION 603.09 OF
THE CONSTRUCTION AND
MATERIALS SPECIFICATIONS.

NOTE: FAIRPORT NURSERY ROAD
PAVEMENT CONSISTS OF
10" ASPHALT.

FOR ESTIMATED QUANTITIES SEE SHEET 87.



US ROUTE 20 PLAN AND PROFILE
STA. 55+00 TO STA. 59+00

LAK - 20 - 18.72

H:\1998\98404\DWG\OUTLET02.DWG PLOT SCALE: 1=1