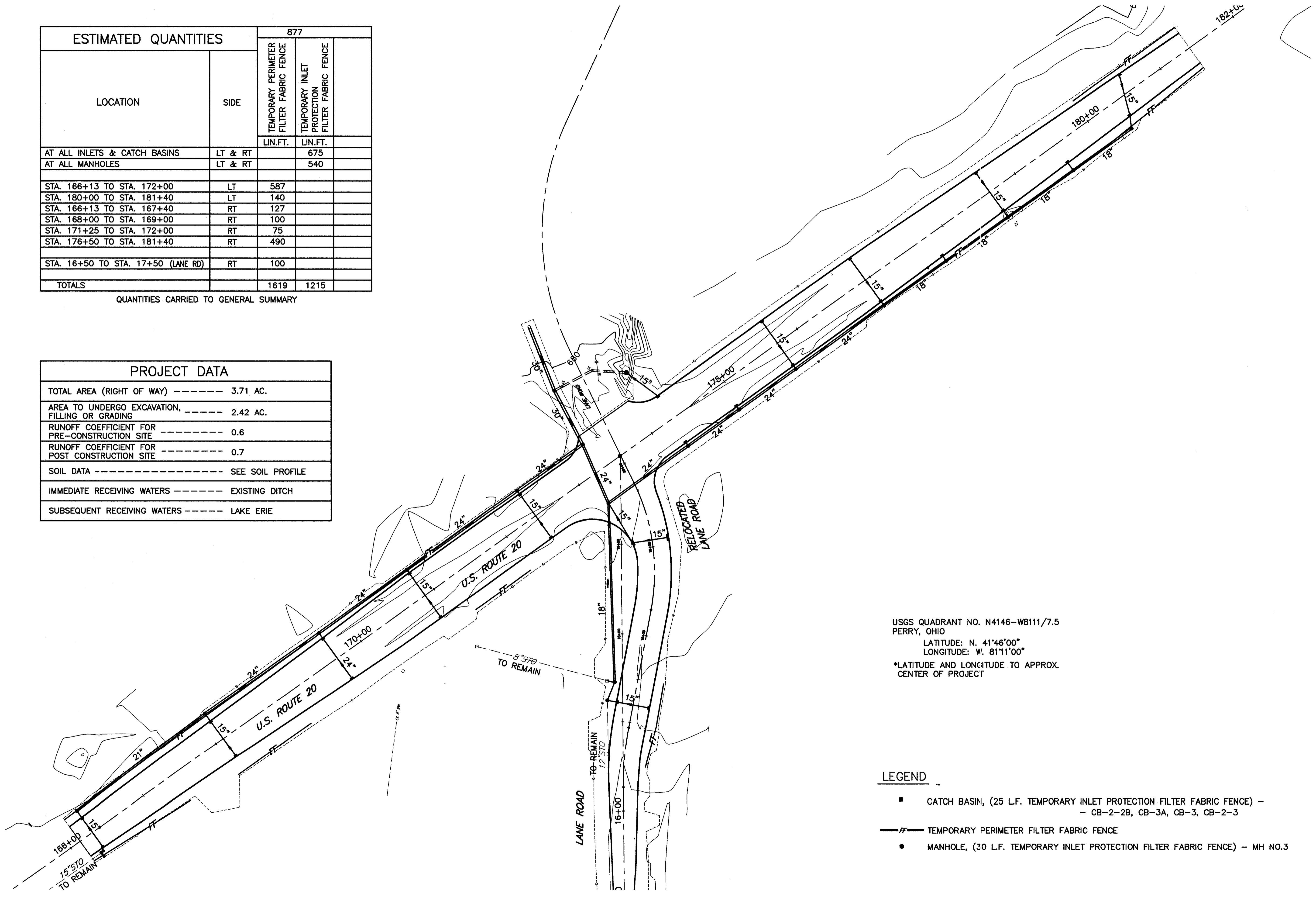


ESTIMATED QUANTITIES		877	
LOCATION	SIDE	TEMPORARY PERIMETER FILTER FABRIC FENCE	TEMPORARY INLET PROTECTION FILTER FABRIC FENCE
		LIN.FT.	LIN.FT.
AT ALL INLETS & CATCH BASINS	LT & RT	675	
AT ALL MANHOLES	LT & RT		540
STA. 166+13 TO STA. 172+00	LT	587	
STA. 180+00 TO STA. 181+40	LT	140	
STA. 166+13 TO STA. 167+40	RT	127	
STA. 168+00 TO STA. 169+00	RT	100	
STA. 171+25 TO STA. 172+00	RT	75	
STA. 176+50 TO STA. 181+40	RT	490	
STA. 16+50 TO STA. 17+50 (LANE RD)	RT	100	
TOTALS		1619	1215

QUANTITIES CARRIED TO GENERAL SUMMARY

PROJECT DATA	
TOTAL AREA (RIGHT OF WAY) -----	3.71 AC.
AREA TO UNDERGO EXCAVATION, FILLING OR GRADING -----	2.42 AC.
RUNOFF COEFFICIENT FOR PRE-CONSTRUCTION SITE -----	0.6
RUNOFF COEFFICIENT FOR POST CONSTRUCTION SITE -----	0.7
SOIL DATA -----	SEE SOIL PROFILE
IMMEDIATE RECEIVING WATERS -----	EXISTING DITCH
SUBSEQUENT RECEIVING WATERS -----	LAKE ERIE



USGS QUADRANT NO. N4146-W8111/7.5
 PERRY, OHIO
 LATITUDE: N. 41°46'00"
 LONGITUDE: W. 81°11'00"
 *LATITUDE AND LONGITUDE TO APPROX. CENTER OF PROJECT

LEGEND

- CATCH BASIN, (25 L.F. TEMPORARY INLET PROTECTION FILTER FABRIC FENCE) - CB-2-2B, CB-3A, CB-3, CB-2-3
- FF — TEMPORARY PERIMETER FILTER FABRIC FENCE
- MANHOLE, (30 L.F. TEMPORARY INLET PROTECTION FILTER FABRIC FENCE) - MH NO.3

H:\1998\98404\DWG\SWPPP1.DWG

STORM WATER POLLUTION PREVENTION PLAN
 STA. 166+00 TO STA. 182+00

LAK - 20 - 18.72