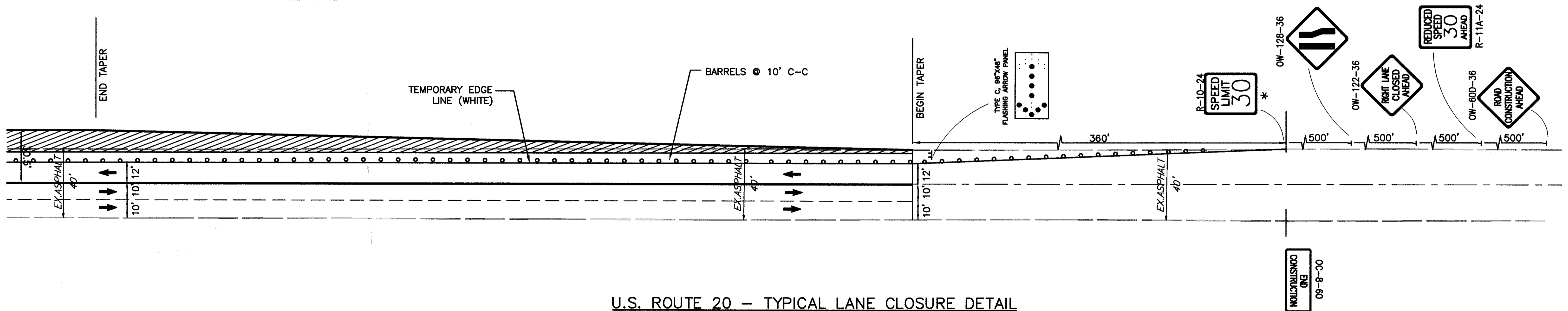


U.S. ROUTE 20 - TYPICAL LANE CLOSURE DETAIL



U.S. ROUTE 20 - TYPICAL LANE CLOSURE DETAIL

WORK ZONE SPEED LIMITS
 * 30 MPH FOR SECTION 1 OF PROJECT SPACED EVERY 660'
 35 MPH FOR SECTIONS 2 - 5 OF PROJECT SPACED EVERY 500'

- LEGEND**
- TRAFFIC FLOW
 - ○ ○ ○ DRUMS SHALL BE SPACED 10' C/C
 - ▨ PERMANENT PAVEMENT CONSTRUCTED THIS PHASE

GRAPHIC SCALE
 0 10 20 30
 (IN FEET)

CALCULATED
 CHECKED