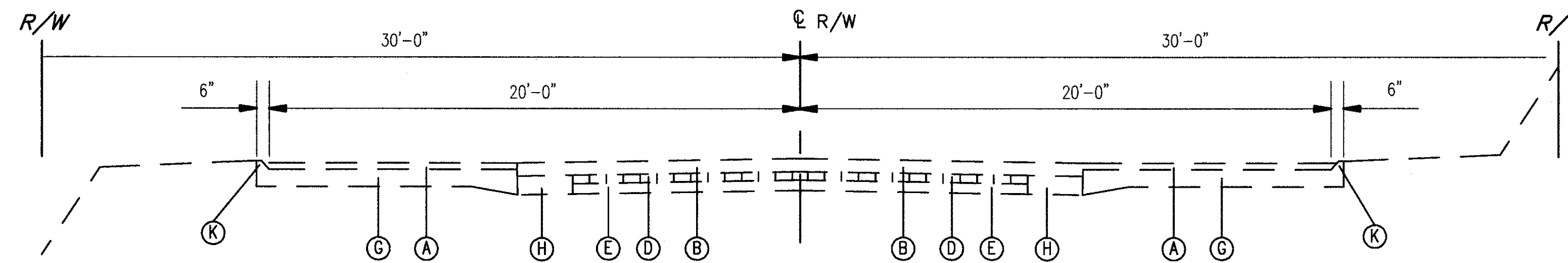
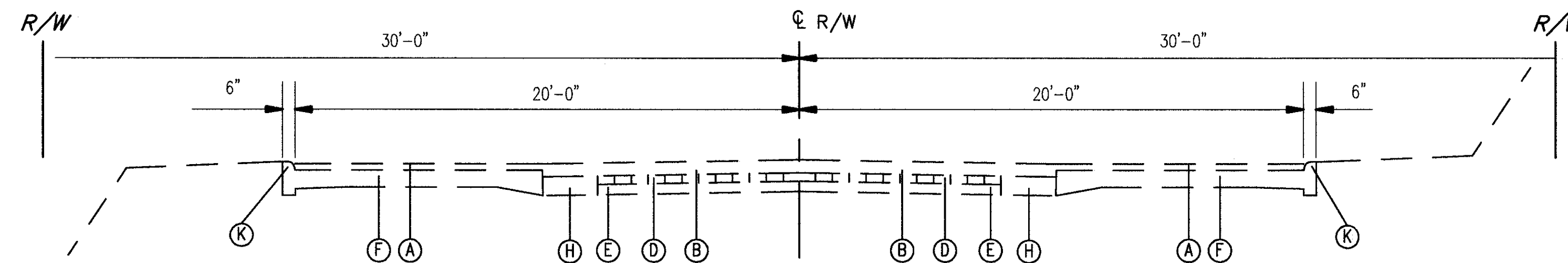


EXISTING TYPICAL SECTIONS

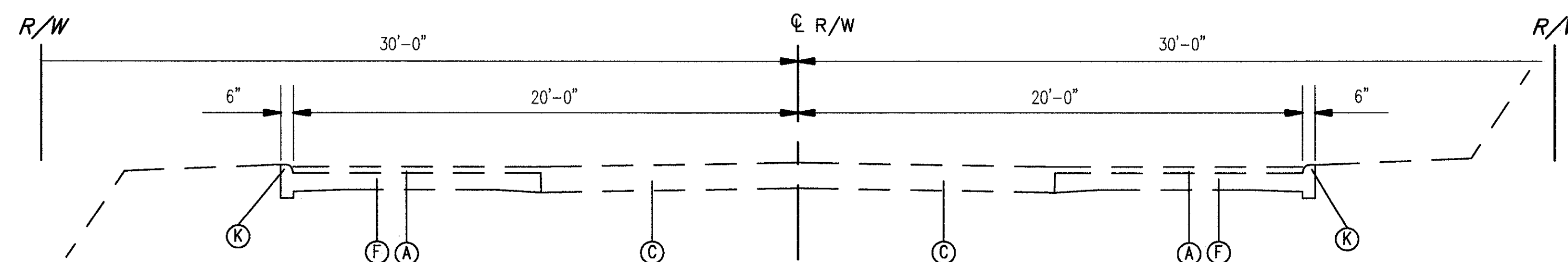
U.S. 20



EXISTING SECTION
STA. 68+97.00 TO STA.95+50.00



EXISTING SECTION
STA. 166+13.00 TO STA. 180+40.00
STA. 270+80.00 TO STA. 279+53.00
STA. 397+59.00 TO STA. 412+00.00



EXISTING SECTION
STA. 279+53.00 TO STA. 287+95.00
STA. 487+80.00 TO STA. 501+82.39

LEGEND

- | | |
|-----------------|----------------------------------|
| (A) 3" ASPHALT | (G) 8" CONCRETE |
| (B) 6" ASPHALT | (H) 9" CONCRETE |
| (C) 12" ASPHALT | (I) 9" REINFORCED CONCRETE |
| (D) 4" BRICK | (J) AGGREGATE BASE W/BIT.SURFACE |
| (E) 5" CONCRETE | (K) CONCRETE CURB |
| (F) 7" CONCRETE | (L) MEDIAN |