

CENTERLINE SURVEY PLAT

LAK - 20 - 18.40

PAINESVILLE TWP. & PERRY TWP. LAKE COUNTY

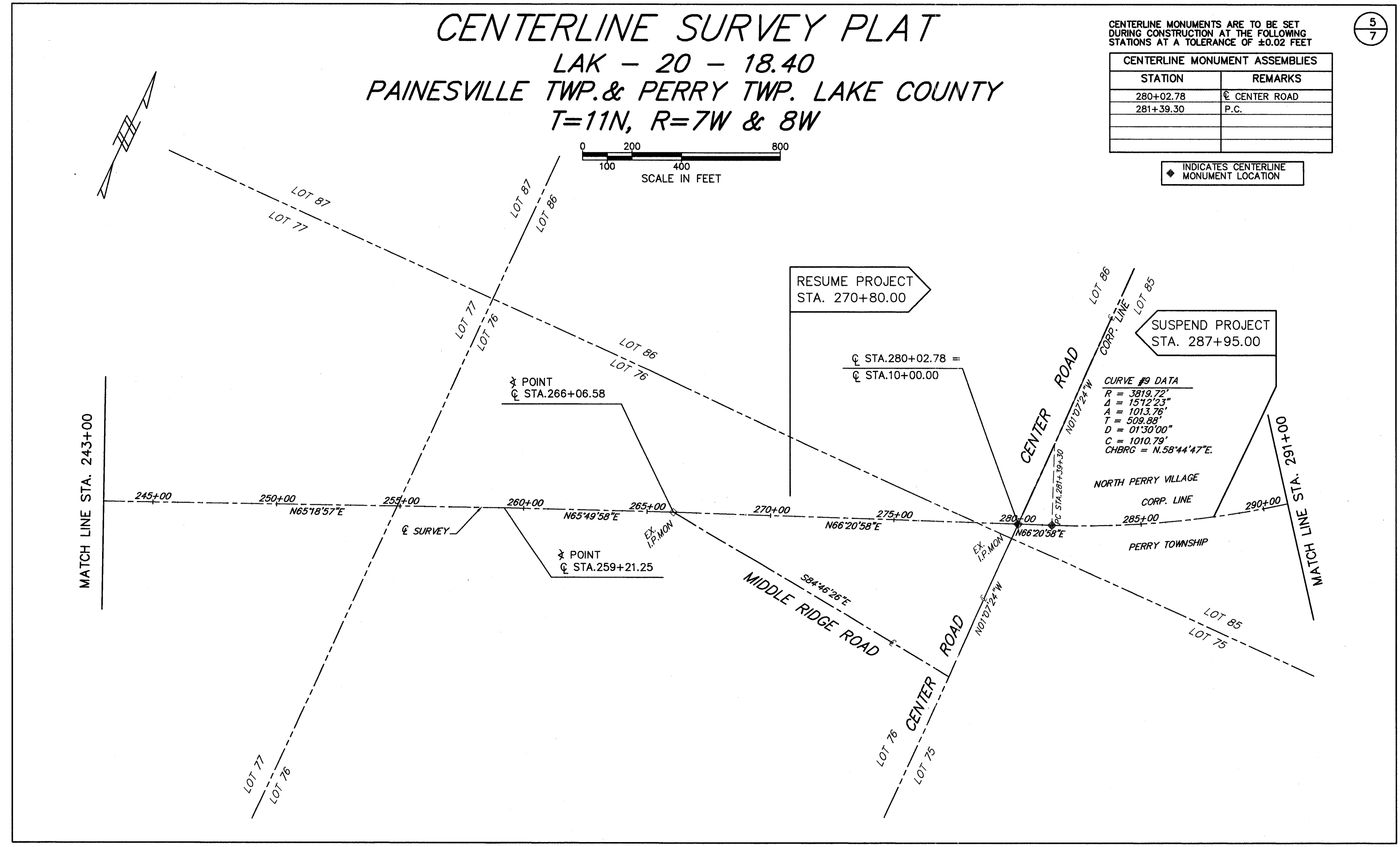
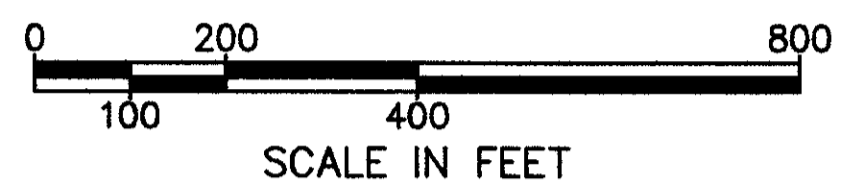
T=11N, R=7W & 8W

CENTERLINE MONUMENTS ARE TO BE SET DURING CONSTRUCTION AT THE FOLLOWING STATIONS AT A TOLERANCE OF ±0.02 FEET

5
7

CENTERLINE MONUMENT ASSEMBLIES	
STATION	REMARKS
280+02.78	C CENTER ROAD
281+39.30	P.C.

◆ INDICATES CENTERLINE MONUMENT LOCATION



SCALE IN FEET

FEDERAL PROJECT NO. ABC-00(00)

STATE PROJECT NO. 00000(0)

CENTERLINE PLAT STA. 270+80.00 TO STA. 287+95.00

LAK - 20 - 18.40

X /