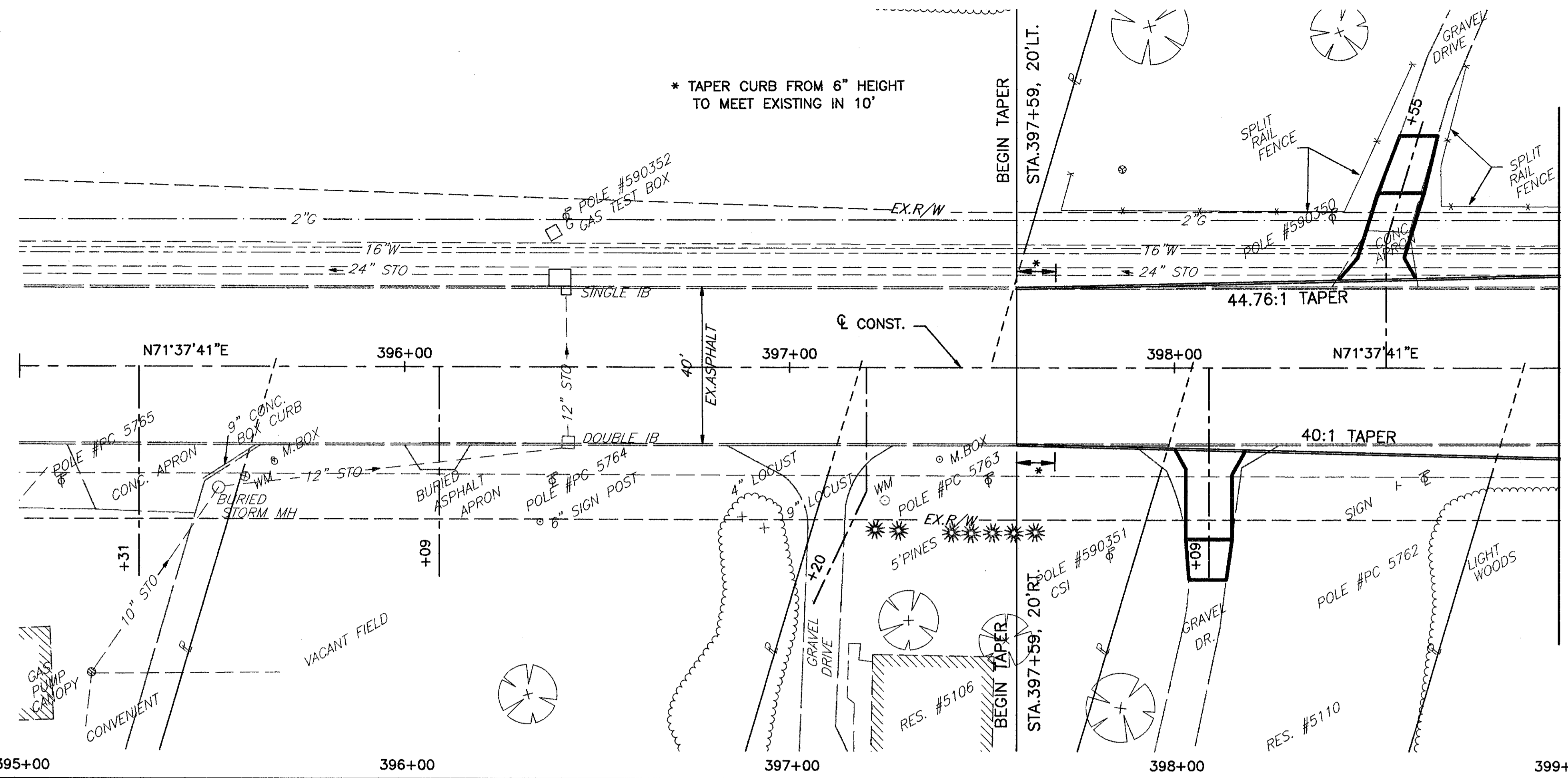


H:\1998\98404\DWG\PRD091.DWG



* TAPER CURB FROM 6" HEIGHT TO MEET EXISTING IN 10'

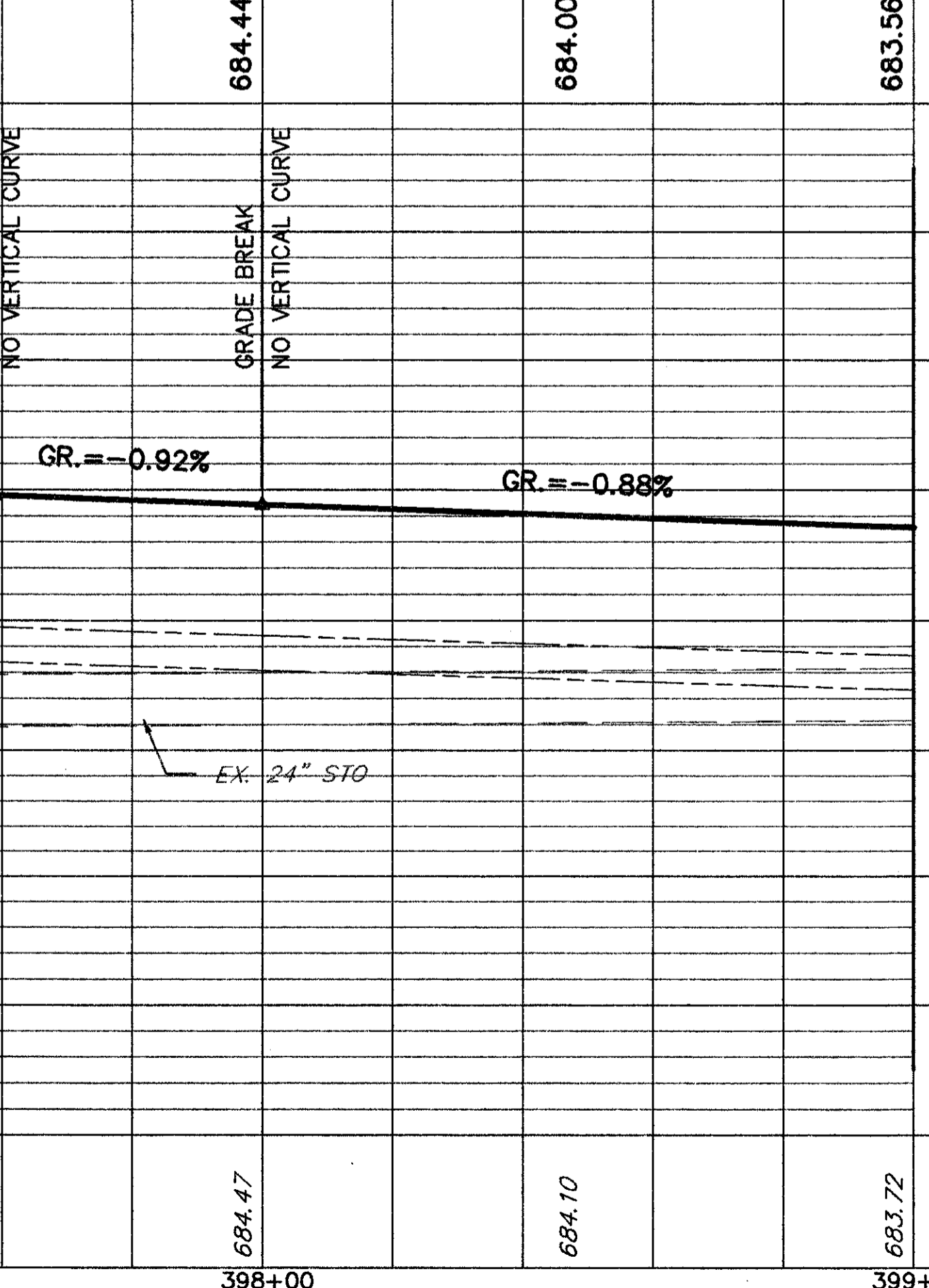
MATCH LINE STA. 399+00

686.79	686.45	686.12	685.68	685.29	684.90	684.47	684.10	683.72		
395+00		396+00		397+00		398+00		399+00		
695										695
690										690
685										685
680										680
675										675
670										670
665										665
660										660

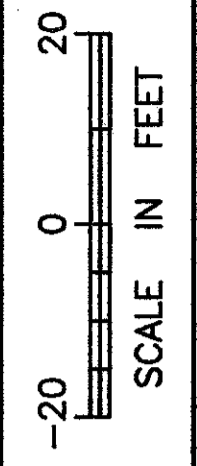
EX. STD IB
STA. 396+41.89, 19.4' LT.
RIM 685.18
24" INV. 675.75 W
12" INV. 676.75 S
24" INV. 675.71 E

EX. STD IB
STA. 396+42.47, 13.8' LT.
RIM 685.14
12" INV. 678.42 N & W

MATCH EXISTING
STA. 397+59
ELEV. = 684.82



MATCH LINE STA. 399+00



CALCULATED
CHECKED

US ROUTE 20 PLAN AND PROFILE
STA. 395+00 TO STA. 399+00

LAK - 20 - 18.40