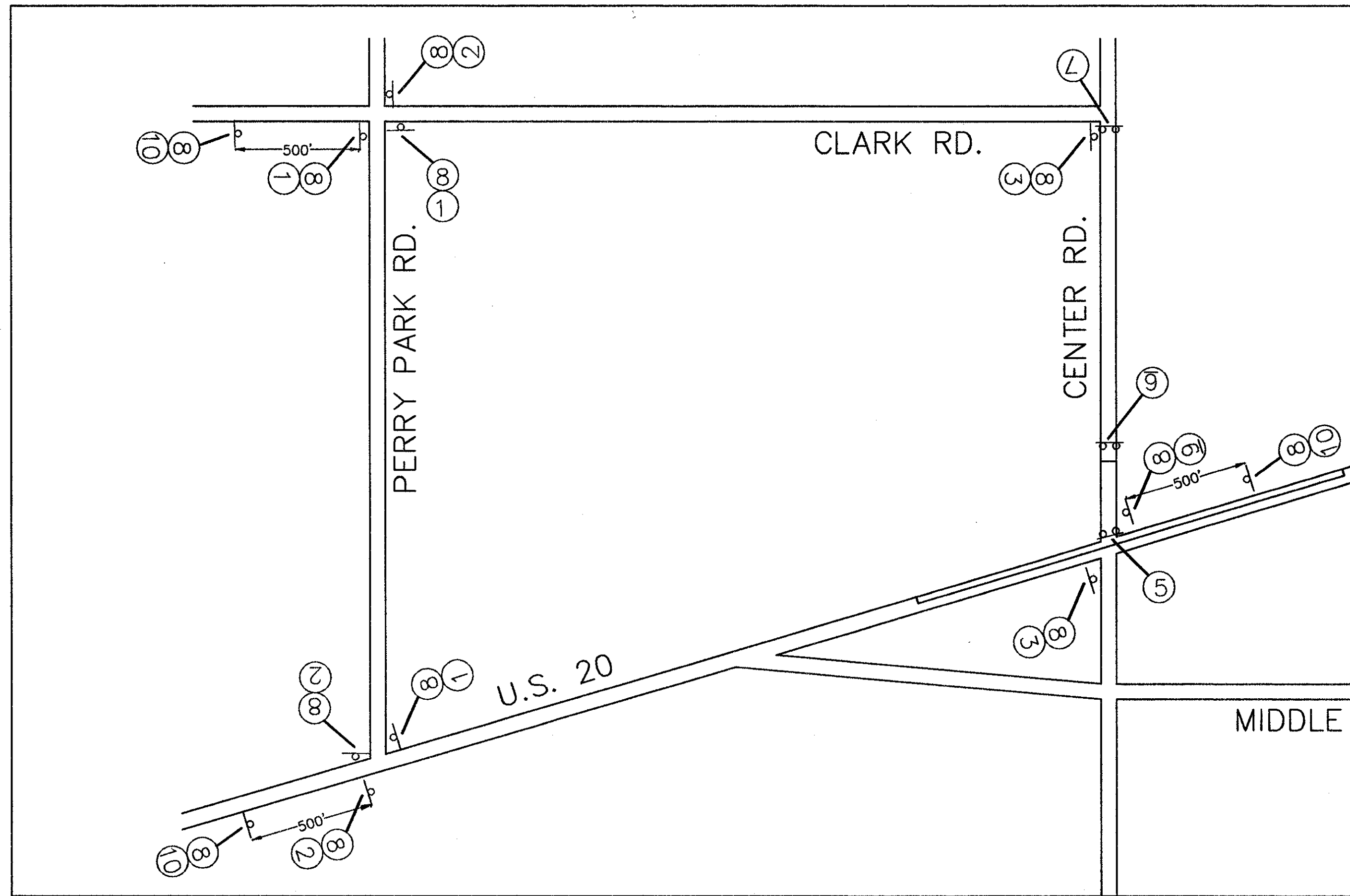
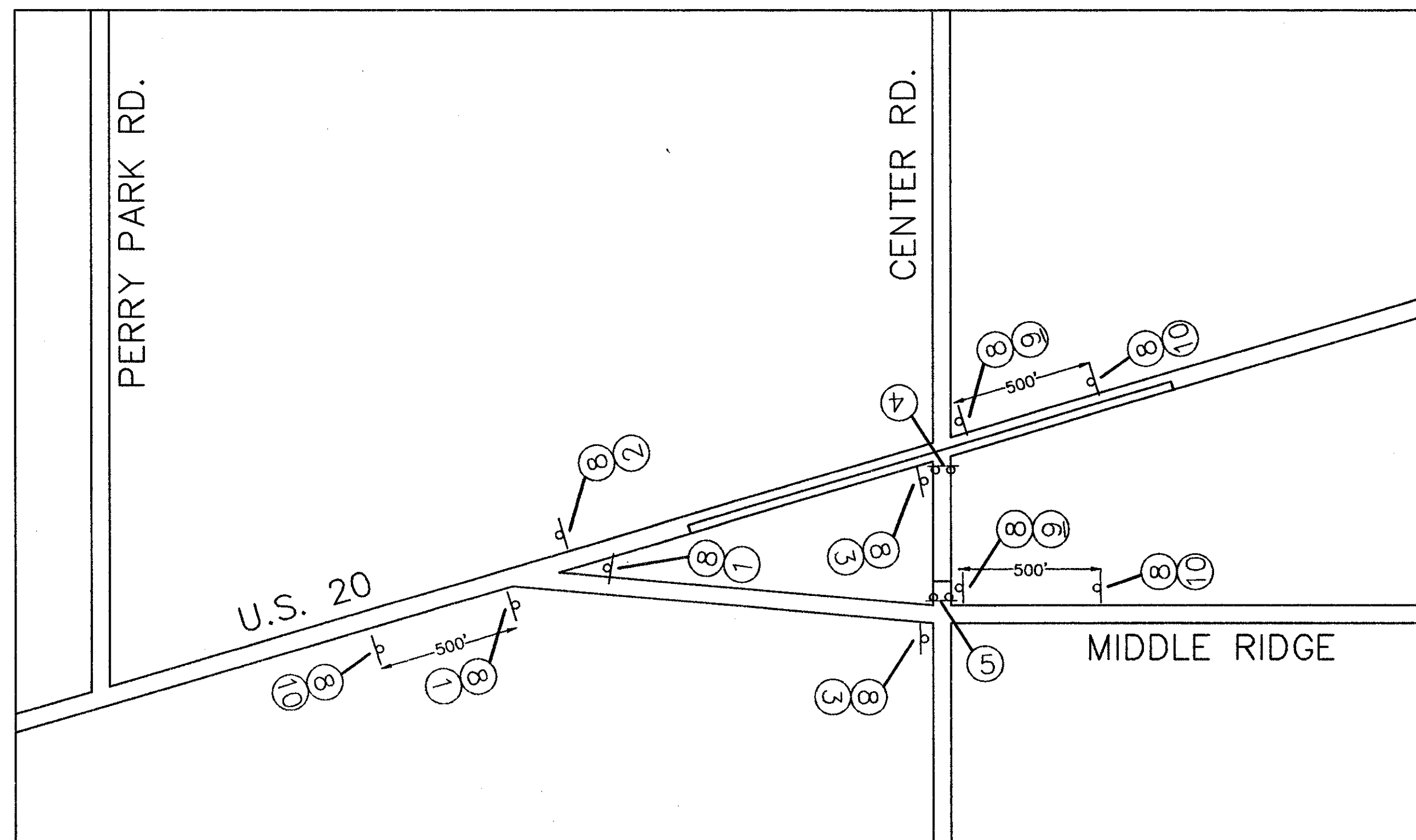


PHASE 1



PHASE 2

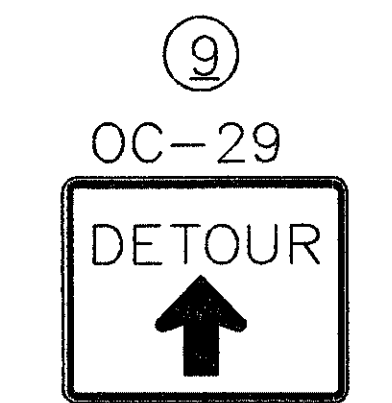
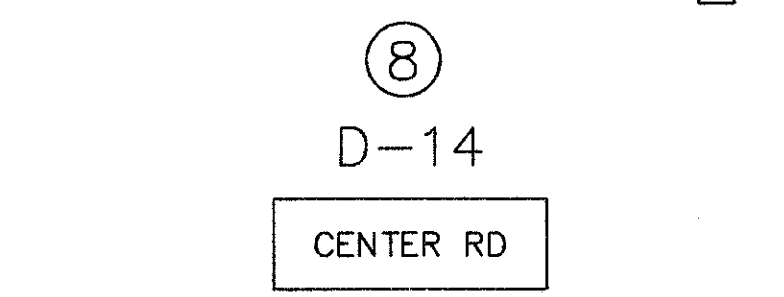
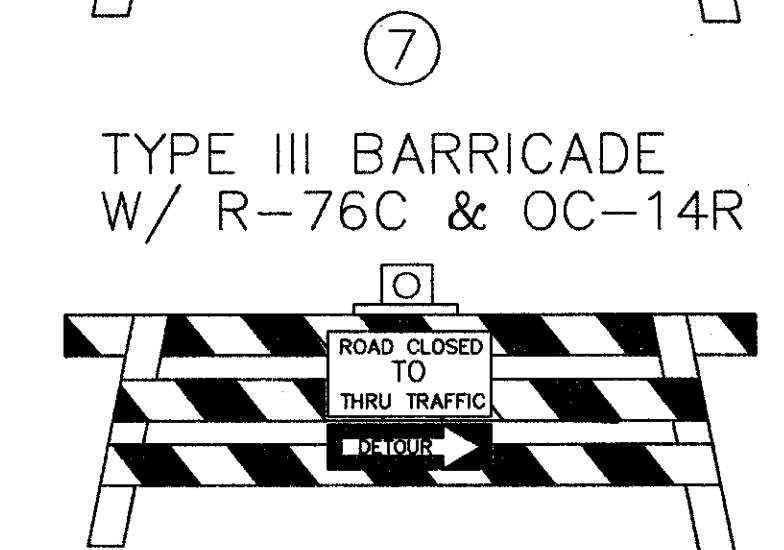
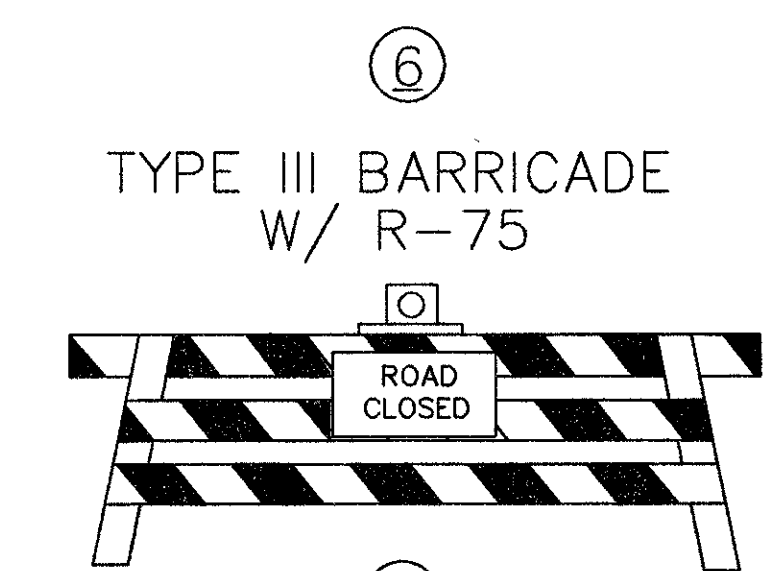
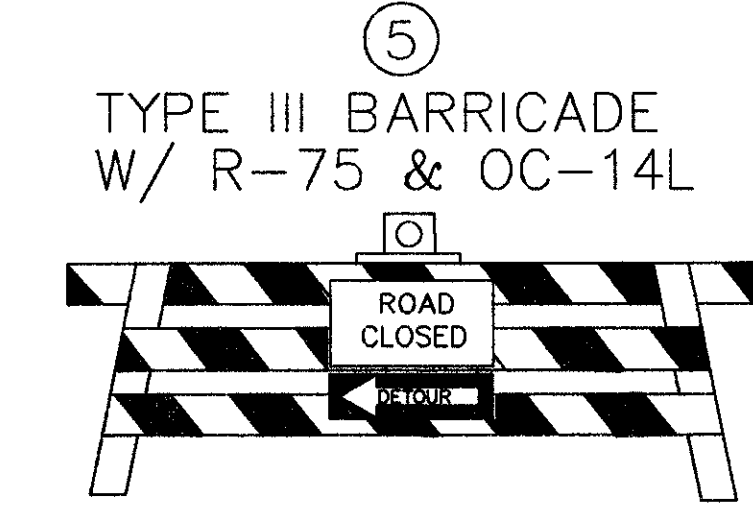
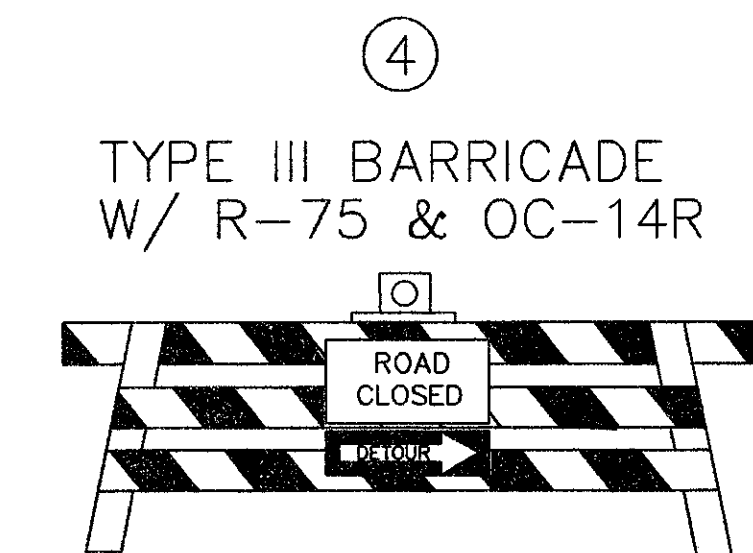
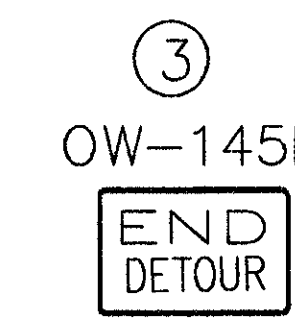
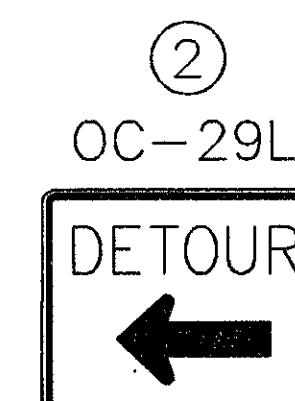
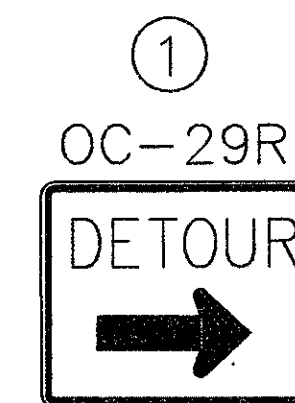


SECTION C PHASING DETAILS

PHASE 1 - CONSTRUCT WESTBOUND SECTION OF U.S. 20 AND THE NORTHERN HALF OF THE CENTER ROAD INTERSECTION. MAINTAIN TWO-WAY TRAFFIC ON EASTBOUND LANES PER THE MAINTENANCE OF TRAFFIC TYPICAL DETAIL. DETOUR CENTER ROAD TRAFFIC UTILIZING U.S. 20, PERRY PARK ROAD AND CLARK ROAD.

PHASE 2 - CONSTRUCT EASTBOUND SECTION OF U.S. 20 AND THE SOUTHERN HALF OF THE CENTER ROAD INTERSECTION. MAINTAIN TWO-WAY TRAFFIC ON THE WESTBOUND LANES PER THE MAINTENANCE OF TRAFFIC TYPICAL DETAIL. DETOUR CENTER ROAD TRAFFIC UTILIZING U.S. 20 AND MIDDLE RIDGE ROAD.

NOTE: CONSTRUCTION FOR EACH PHASE SHALL BE COMPLETED PRIOR TO ESTABLISHMENT OF DETOUR FOR NEXT PHASE. SIGNAL WORK SHALL OCCUR PRIOR TO FINAL PAVEMENT CONSTRUCTION. ANY SIGNAL TAKEN OUT OF SERVICE DUE TO CONSTRUCTION OPERATIONS SHALL BE REPLACED WITH TEMPORARY STOP SIGNS ERECTED ON THE SIDE STREET APPROACHES.



NOT TO SCALE

CALCULATED
CHECKED

MAINTENANCE OF TRAFFIC
SECTION C - CENTER ROAD

LAK - 20 - 18.40