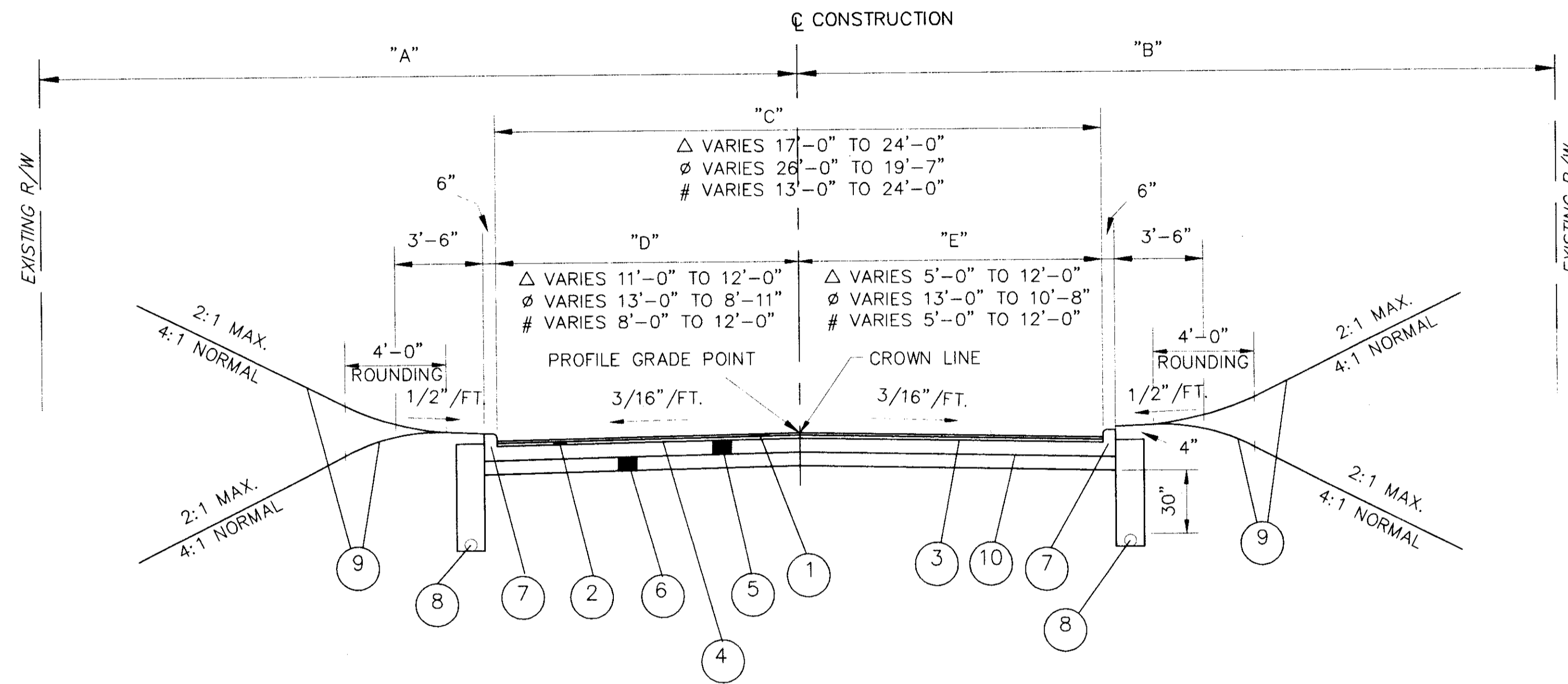


# TYPICAL SECTIONS

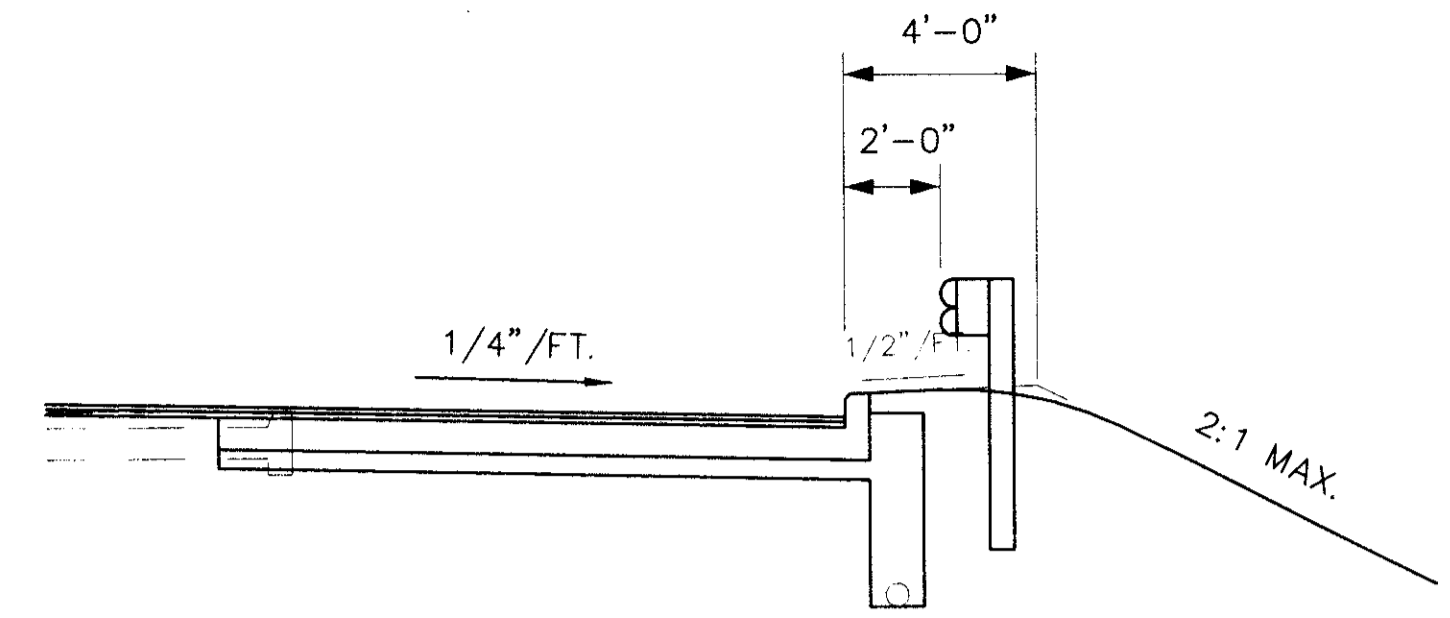


## SIDESTREET 2-LANE SECTION FULL DEPTH REPLACEMENT

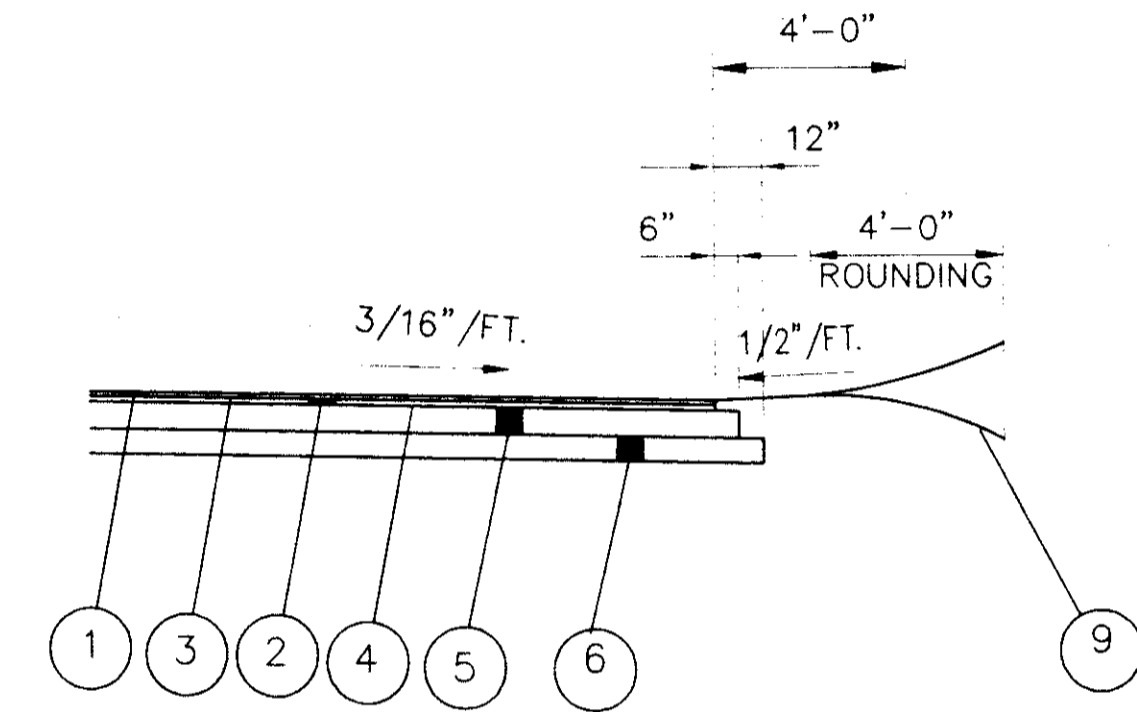
△ HECKATHORN DRIVE STA. 7+80.00 TO STA. 8+80.00, LT. & RT.  
 ∅ HALE ROAD STA. 12+45.00 TO STA. 12+95.00, LT. & RT.  
 # CHAPEL LANE STA. 8+35.00 TO STA. 8+98.13

STREET NAME	DIMENSIONS					STATION		LENGTH
	"A"	"B"	"C"	"D"	"E"	BEGIN	END	
HECKATHORN DRIVE	25'	25'	24'	12'	12'	STA. 7+80	STA. 9+69	189'±
HALE ROAD (RELOCATED)	30'	30'	26'	13'	13'	STA. 10+31	STA. 12+95	264'±
CHAPEL LANE	10'	10'	24'	12'	12'	STA. 8+35	STA. 9+70	135'±
							TOTAL	588'±

NOTE: FOR SIDEWALK DETAIL SEE SHEET NO.



## TYPICAL GUARD RAIL DETAIL VARIOUS LOCATIONS



## SECTION WITHOUT CURB AND UNDERDRAIN

HECKATHORN DRIVE STA. 7+80.00 TO STA. 8+70.00, LT. & RT.  
 HALE ROAD STA. 12+55.00 TO STA. 12+95.00, LT. & RT.  
 CHAPEL LANE STA. 8+35.00 TO STA. 8+88.00, LT. & RT.

## LEGEND

- ① ITEM 448 - 1 1/4" ASPHALT CONCRETE SURFACE COURSE, TYPE 1, PG 64-22
- ② ITEM 448 - 1 3/4" ASPHALT CONCRETE INTERMEDIATE COURSE, TYPE 2, PG 64-22
- ③ ITEM 407 - TACK COAT FOR INTERMEDIATE COURSE
- ④ ITEM 407 - TACK COAT
- ⑤ ITEM 301 - 6" BITUMINOUS AGGREGATE BASE, PG 64-22
- ⑥ ITEM 304 - 6" AGGREGATE BASE
- ⑦ ITEM 830 - CURB, TYPE 6
- ⑧ ITEM 605 - 6" SHALLOW PIPE UNDERDRAIN WITH FABRIC WRAP
- ⑨ ITEM 659 - SEEDING AND MULCHING
- ⑩ ITEM 408 - BITUMINOUS PRIME COAT
- ⑪ ITEM 305 - 9" CONCRETE BASE