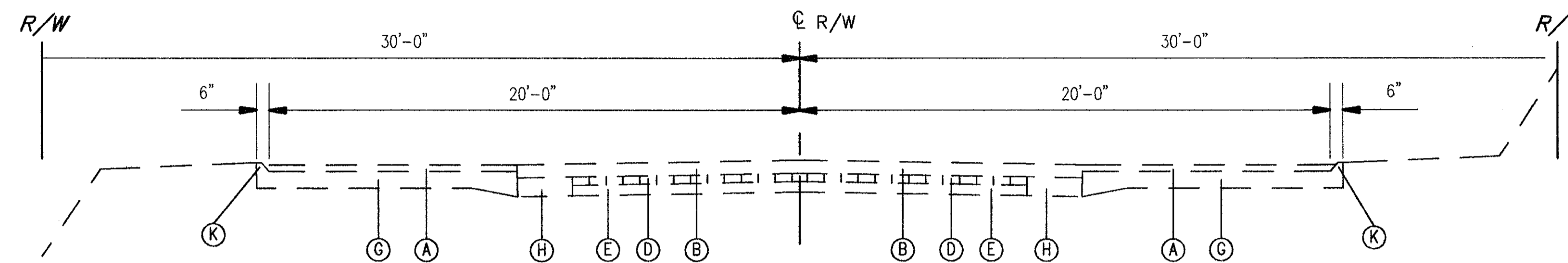
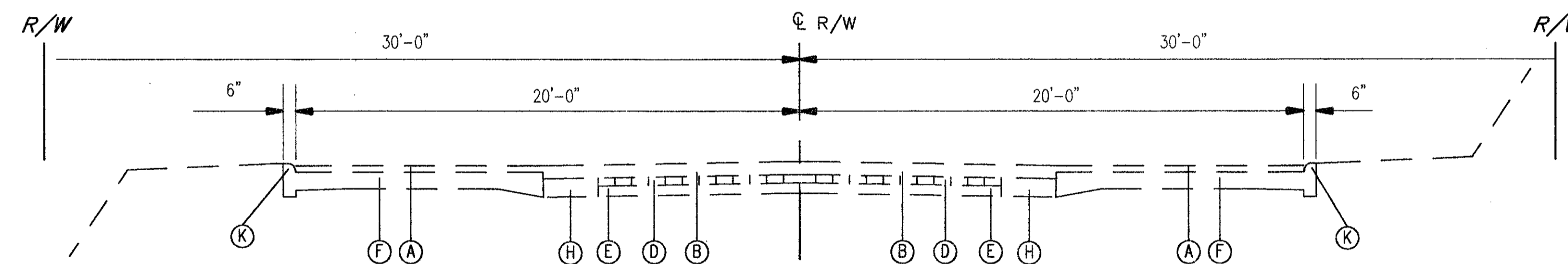


# EXISTING TYPICAL SECTIONS

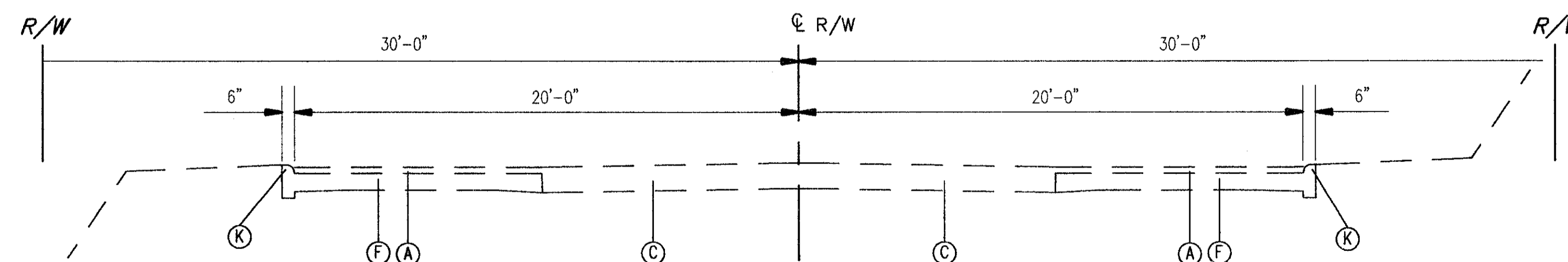
U.S. 20



EXISTING SECTION  
STA. 68+97.00 TO STA.95+50.00



EXISTING SECTION  
STA. 166+13.00 TO STA. 180+40.00  
STA. 270+80.00 TO STA. 279+53.00  
STA. 397+59.00 TO STA. 412+00.00



EXISTING SECTION  
STA. 279+53.00 TO STA. 287+95.00  
STA. 487+80.00 TO STA. 501+82.39

## LEGEND

- |                 |                                  |
|-----------------|----------------------------------|
| (A) 3" ASPHALT  | (G) 8" CONCRETE                  |
| (B) 6" ASPHALT  | (H) 9" CONCRETE                  |
| (C) 12" ASPHALT | (I) 9" REINFORCED CONCRETE       |
| (D) 4" BRICK    | (J) AGGREGATE BASE W/BIT.SURFACE |
| (E) 5" CONCRETE | (K) CONCRETE CURB                |
| (F) 7" CONCRETE | (L) MEDIAN                       |

H:\1998\0840\dwg\typicals.dwg 08/12/99 12:00:02 PM EDT

LAYER 220

CALCULATED  
CHECKED

EXISTING TYPICAL SECTIONS - U.S. 20

LAK - 20 - 18.40

7