

LAK-20-18.07

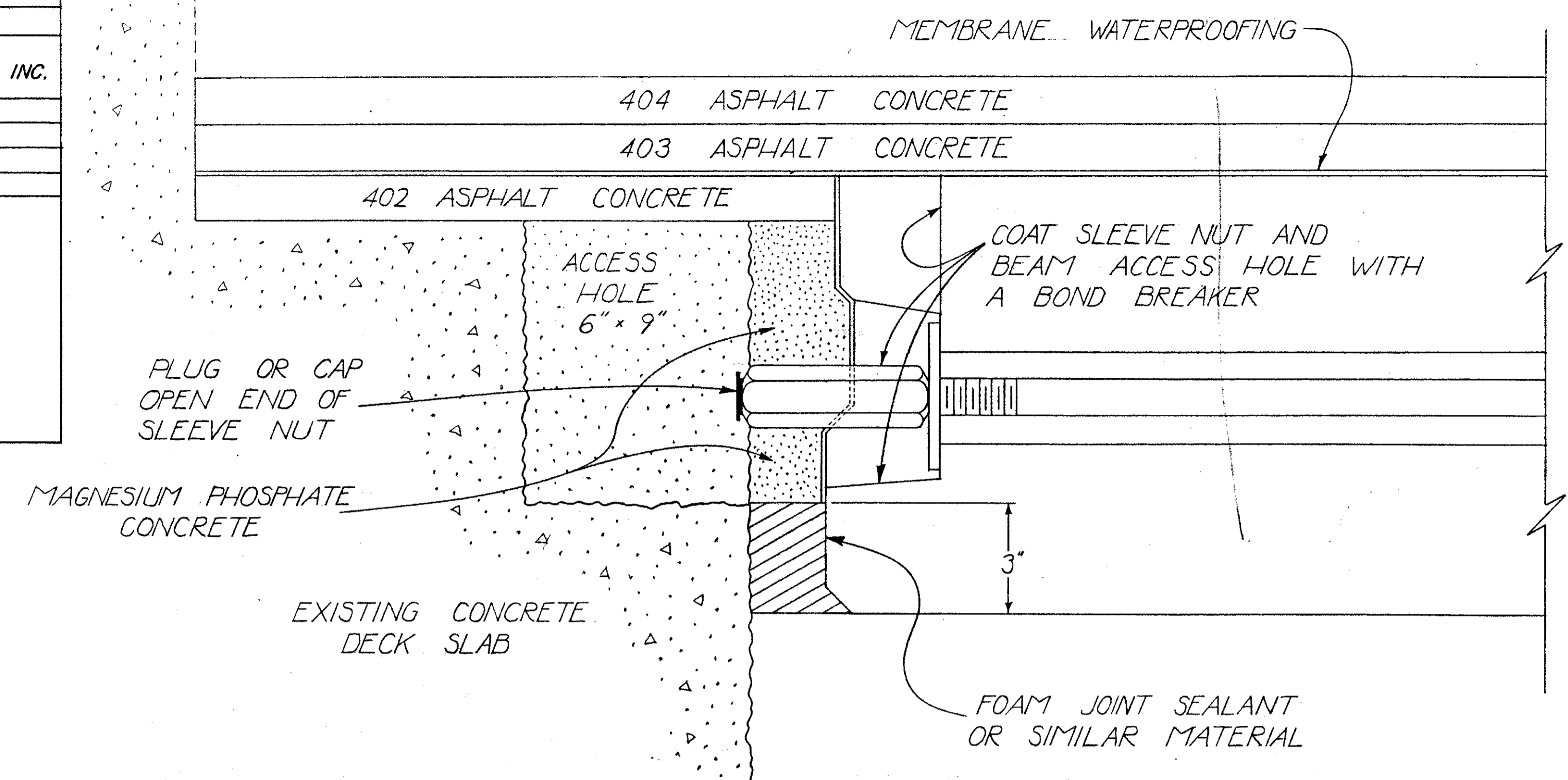
PLAN NO. BR-103-82

REINFORCING STEEL LIST													
ABUTMENTS													
MARK	REAR	FWD.	TOTAL	LENGTH	WEIGHT	TYPE	A	B	C	D	E	R	INC.
A501	6	6	12	20'-10"	261	ST.							
A502	82	82	164	3'-1"	527	I	2'-4"	10 1/2"					

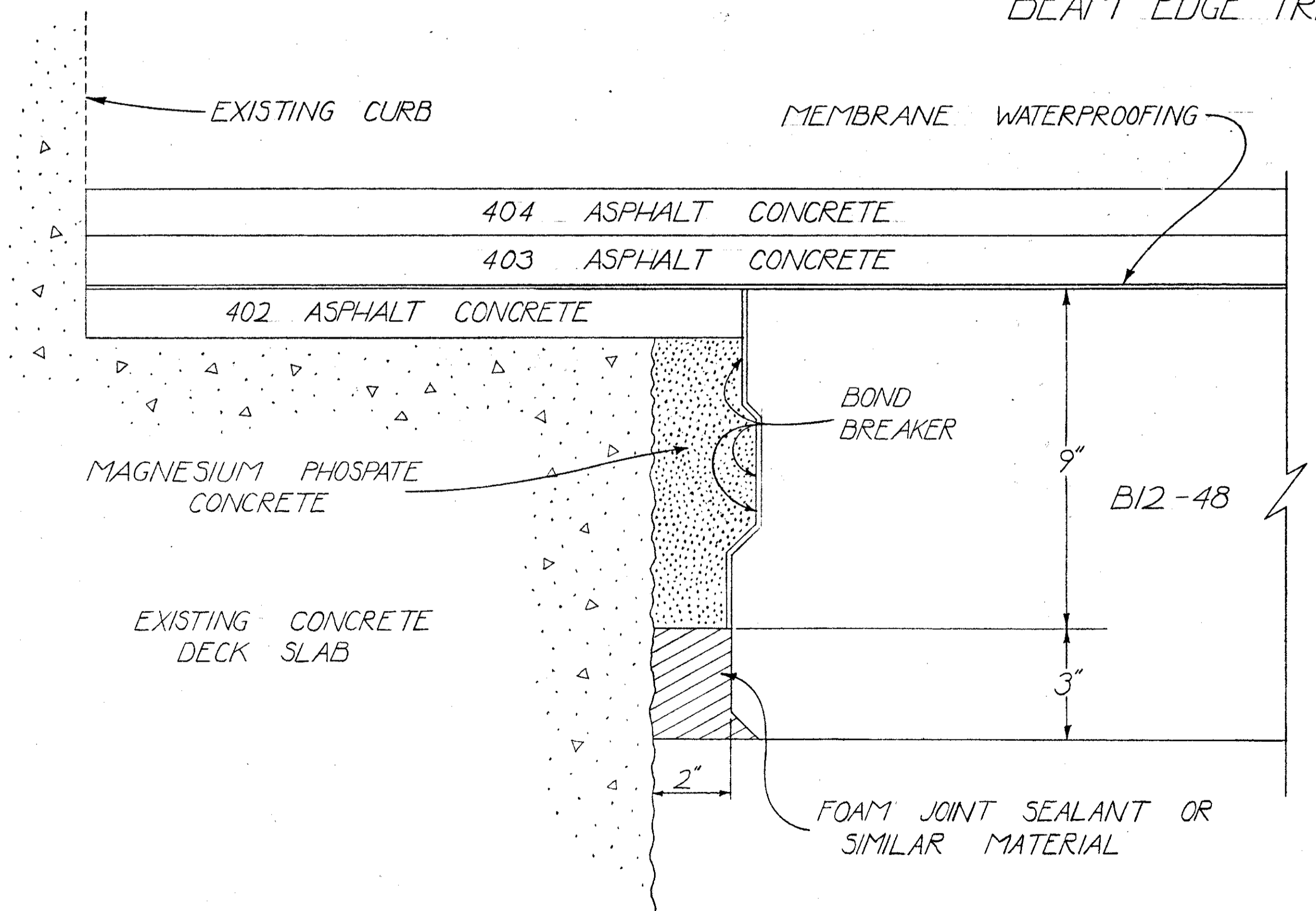
  

BENDING DIAGRAMS

TYPE I



BEAM EDGE TREATMENT AT TIE ROD - DETAIL A



BEAM EDGE TREATMENT - DETAIL A

ESTIMATED QUANTITIES						
ITEM	TOTAL	UNIT	DESCRIPTION	ABUT.	SUPER	GEN'L
202	LUMP	SUM	PORTIONS OF STRUCTURE REMOVED			LUMP
202	758	SQ. YD.	WEARING COURSE REMOVED		758	
402	33	CU. YD.	ASPHALT CONCRETE, AC 20		0.3	32.6
403	21	CU. YD.	ASPHALT CONCRETE, AC 20		3.8	16.7
404	130	CU. YD.	ASPHALT CONCRETE, AC 20		3.8	126.2
407	277	GAL.	TACK COAT		8.2	269
509	788	LB.	REINFORCING STEEL	788		
510	164	EACH	DOWEL HOLES	164		
511	7	CU. YD.	CLASS C CONCRETE	7		
515	10	EACH	PRESTRESSED CONCRETE BRIDGE MEMBERS, B12-48		10	
516	80	LIN. FT.	JOINT SEALER (705.01 or 705.02)	80		
516	27	SQ. FT.	1" PREFORMED EXPANSION JOINT FILLER	27		
SPEC.	121	SQ. YD.	MEMBRANE WATERPROOFING (SEE PROP. NOTE 109)		121	
614	LUMP	SUM	MAINTAINING TRAFFIC			LUMP
621	0.15	MILES	DOUBLE YELLOW CENTERLINES			0.15
621	0.30	MILES	LANE LINES 4 INCH			0.30
624	LUMP	SUM	MOBILIZATION			LUMP
SPEC.	6	CU. FT.	MAGNESIUM PHOSPHATE CONCRETE		6	

STATE OF OHIO DEPARTMENT OF TRANSPORTATION BUREAU OF BRIDGES AND STRUCTURAL DESIGN				9 / 9		
SUPERSTRUCTURE DETAILS BRIDGE NO. LAK-20-18.07 OVER F.P. & E. RAILROAD						
DESIGNED	DRAWN	TRACED	CHECKED	REVIEWED	DATE	REVISED
SDT	SDT	T.G.C.	ULH			