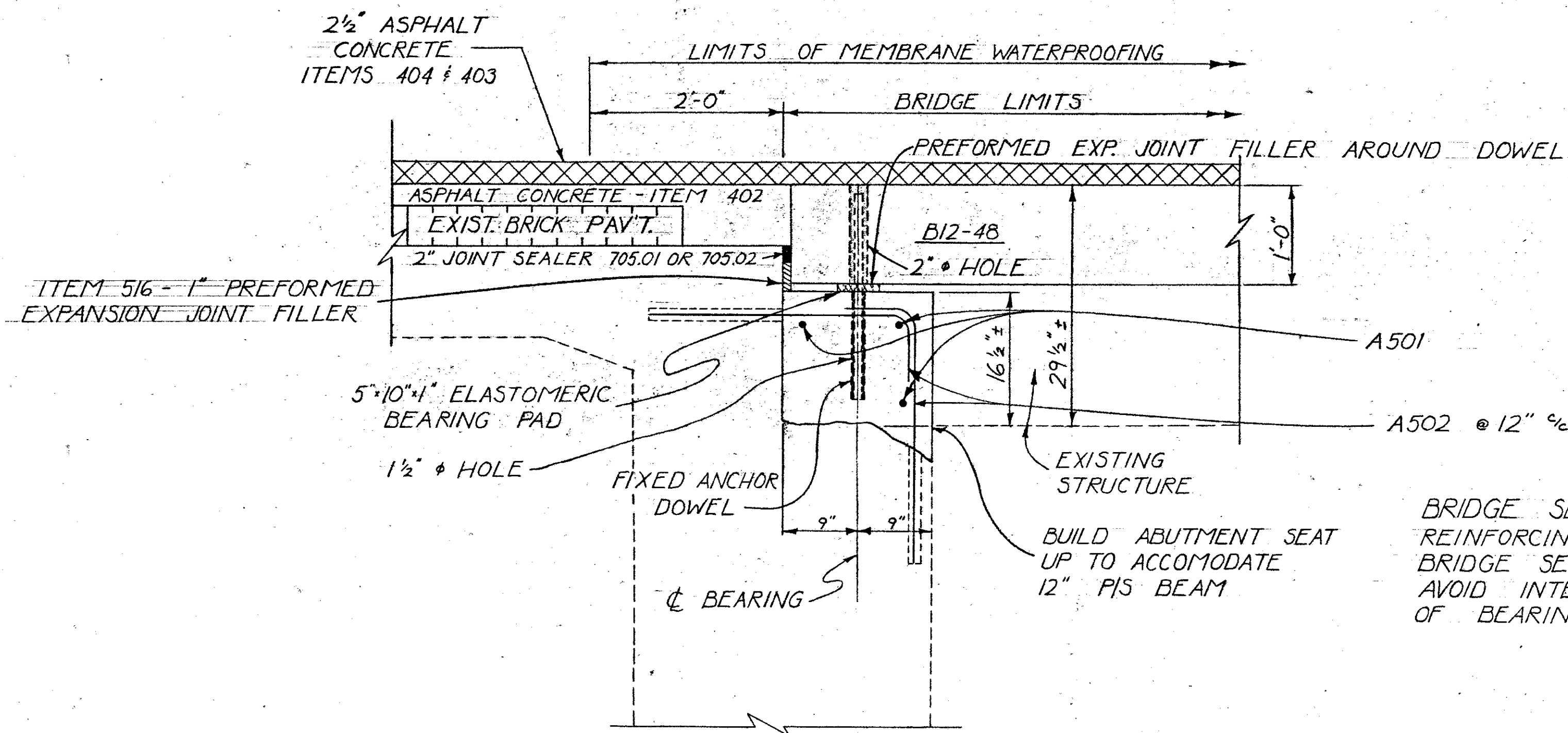
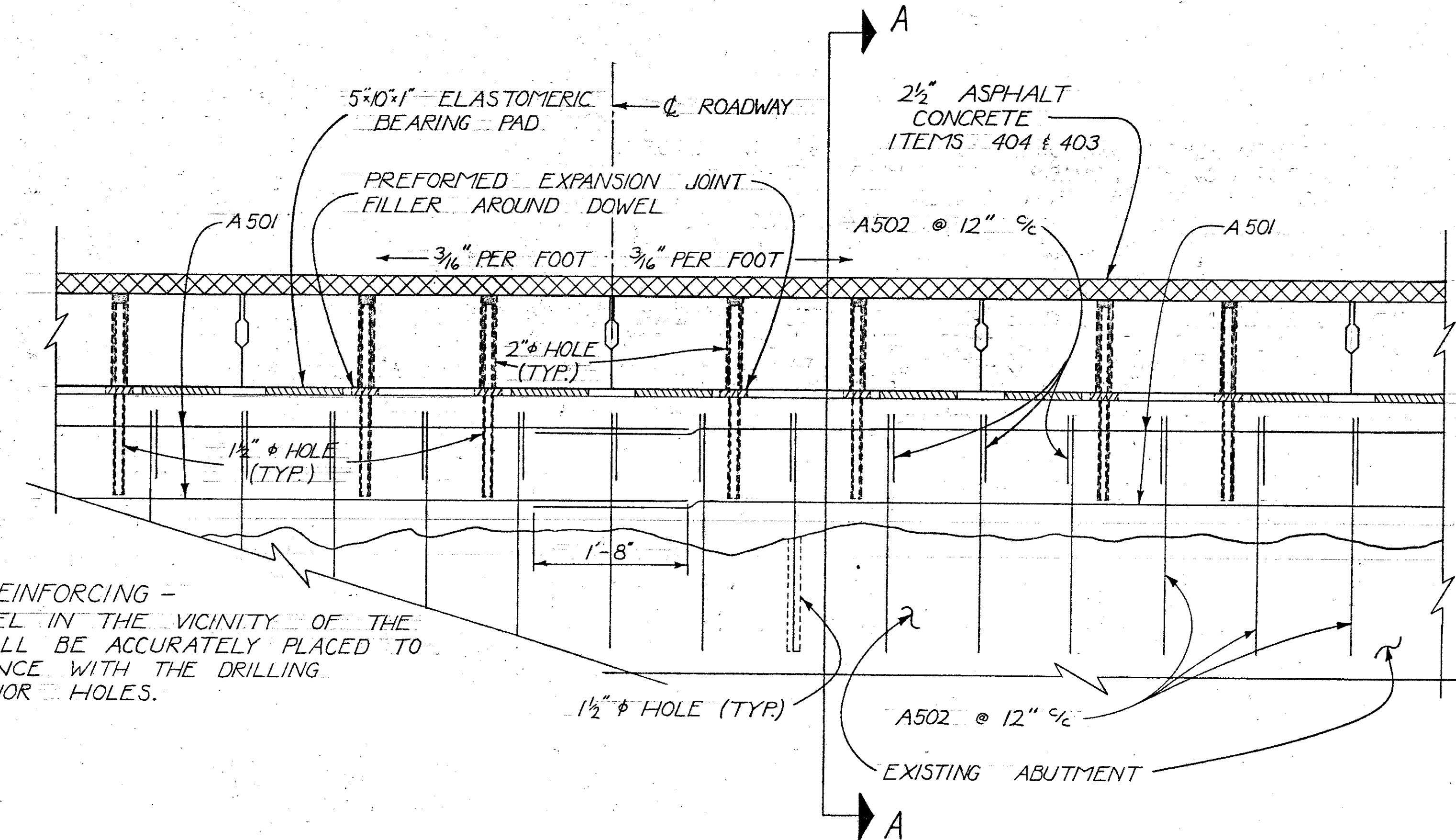


B12-48



DETAIL AT CL BEARING ABUTMENT SECTION A-A



ABUTMENT ELEVATION FRONT & REAR

STATE OF OHIO DEPARTMENT OF TRANSPORTATION BUREAU OF BRIDGES AND STRUCTURAL DESIGN						7/9
SUPERSTRUCTURE DETAILS BRIDGE NO. LAK-20-18.07 OVER F. P. & E. RAILROAD						
DESIGNED	DRAWN	TRACED	CHECKED	REVIEWED	DATE	REVISED
SDT	SDT		ULH			