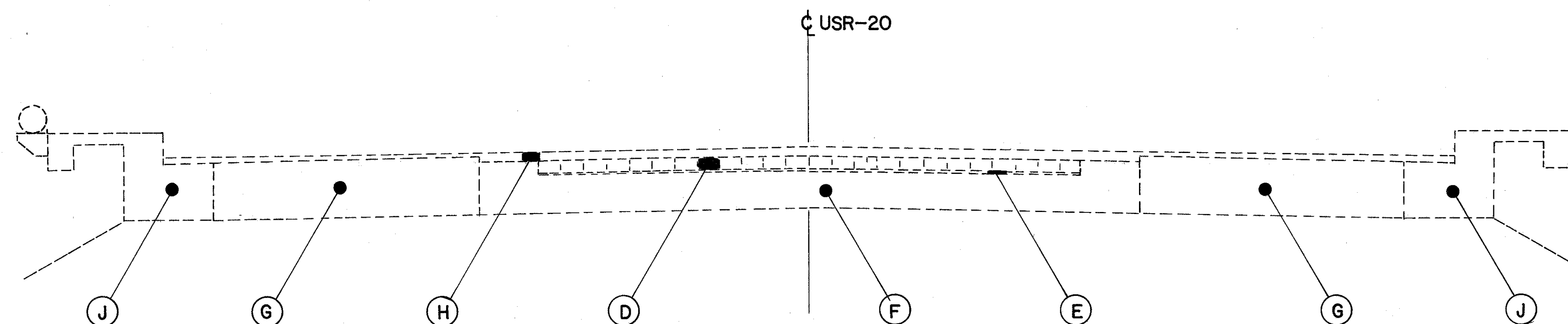


PROFILE AND TYPICAL SECTIONS

LAKE COUNTY
LAK-20-18.07

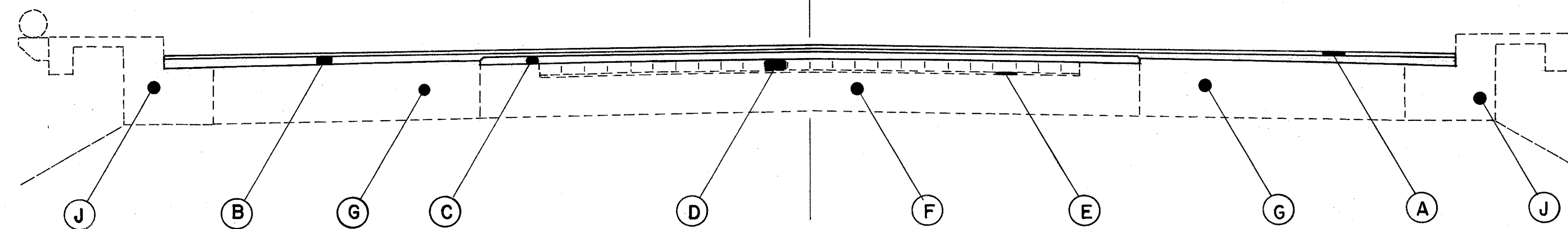
PLAN NO. BR-103-02



EXISTING TYPICAL SECTION

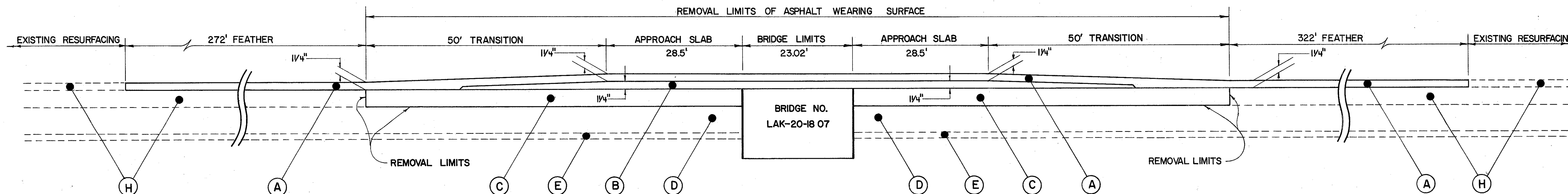
STA. 9+96.50 TO STA. 10+25.00
* STA. 10+48.02 TO STA. 10+76.52

- (A) ITEM 404 - ASPHALT CONCRETE
- (B) ITEM 403 - ASPHALT CONCRETE
- (C) ITEM 402 - ASPHALT CONCRETE
- (D) EXISTING BRICK PAVEMENT
- (E) EXISTING BRICK BINDER COURSE
- (F) EXISTING CONCRETE BASE
- (G) EXISTING CONCRETE PAVEMENT
- (H) EXISTING ASPHALT WEARING SURFACE
- (J) EXISTING CONCRETE EXTENSION



MODIFIED TYPICAL SECTION

*



PROFILE

NOTE: PROFILE SHOWN IS ALONG THE CENTERLINE OF USR-20.