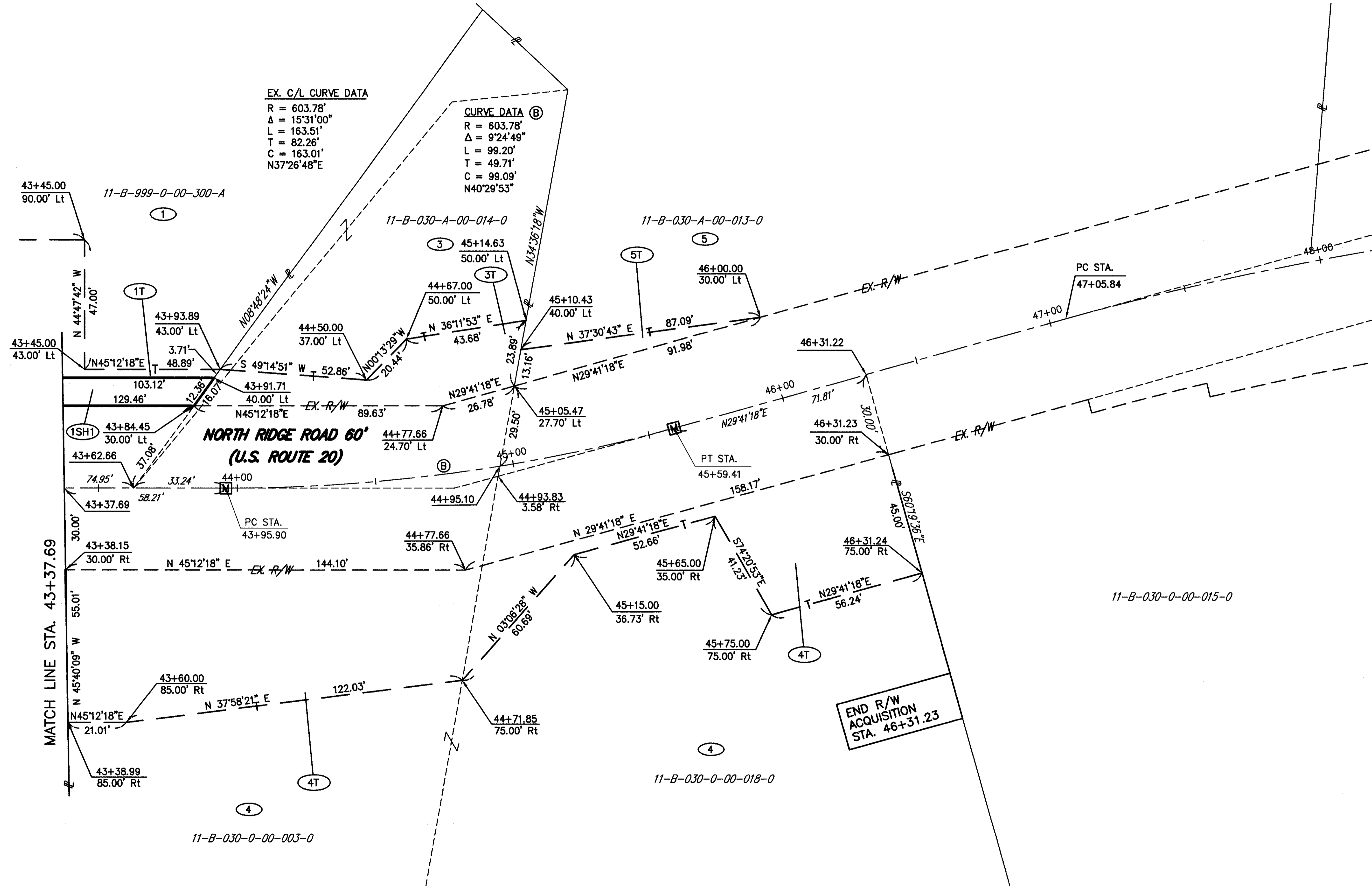
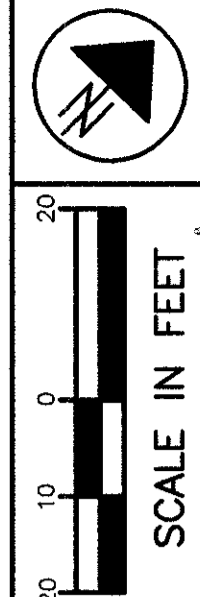


**ORIGINAL LOTS NO. 6 & NO. 7, TRACT 2  
PAINESVILLE TOWNSHIP, LAKE COUNTY, OHIO  
R 8 W T 11 N**



**EX. C/L CURVE DATA**  
 R = 603.78'  
 Δ = 15°31'00"  
 L = 163.51'  
 T = 82.26'  
 C = 163.01'  
 N37°26'48"E

**CURVE DATA (B)**  
 R = 603.78'  
 Δ = 9°24'49"  
 L = 99.20'  
 T = 49.71'  
 C = 99.09'  
 N40°29'53"

P.L.D. NO.  
**20739**

R/W DESIGNER  
PSL  
R/W REVIEWER  
WDB

**RIGHT OF WAY PLAN  
STA. 43+37.69 TO STA. 46+31.22**

**LAK - 20 - 18.07**

7 / 9

70  
72

THE EXISTING CENTERLINE OF SURVEY AND THE EXISTING RIGHT OF WAY WERE ESTABLISHED USING O.D.O.T. PLANS S.H. (I.C.H.) NO.2 SEC. J (PART) WIDENING USR-20-15.37-17.97 FROM AUGUST 1932. (CLEVELAND-BUFFALO ROAD)

**MONUMENT LEGEND**  
 [M] PROP. MONUMENT ASSEMBLY  
 [m] EXIST. MONUMENT ASSEMBLY

REV.	DATE	DESCRIPTION

COMPLETION DATE:

H:\2000\00253\dwg\RWSH2.dwg 11/10/01 10:13:56 AM AM EST