

ORIGINAL LOTS NO. 6 & NO. 7, TRACT 2  
PAINESVILLE TOWNSHIP, LAKE COUNTY, OHIO  
R 8 W T 11 N



P.L.D. NO. 20739

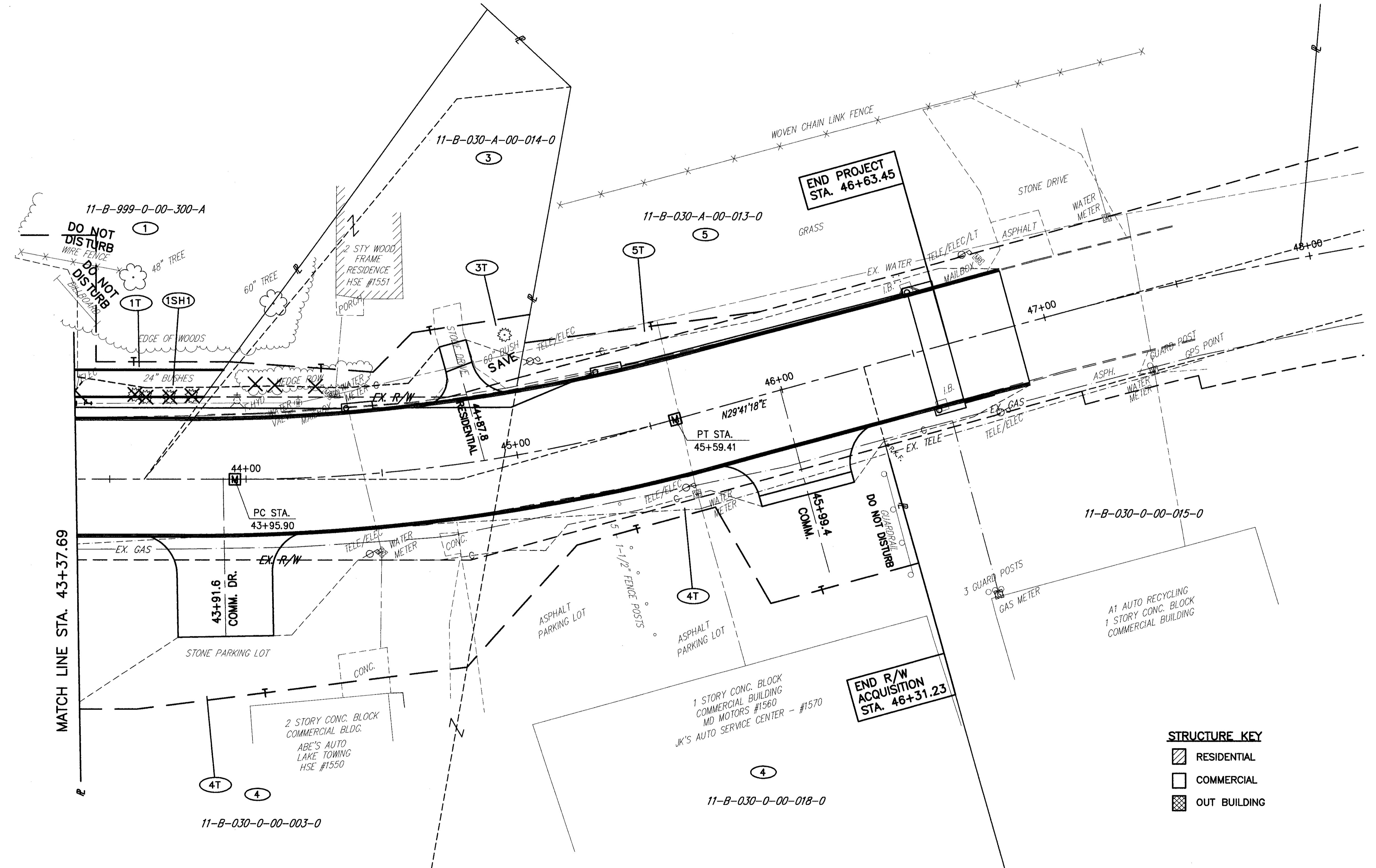
R/W DESIGNER PSL  
R/W REVIEWER WDB

RIGHT OF WAY PLAN  
STA. 43+37.69 TO STA. 46+31.22

LAK - 20 - 18.07

6 / 9

69  
72



**STRUCTURE KEY**

|  |              |
|--|--------------|
|  | RESIDENTIAL  |
|  | COMMERCIAL   |
|  | OUT BUILDING |

**MONUMENT LEGEND**

|  |                          |
|--|--------------------------|
|  | PROP. MONUMENT ASSEMBLY  |
|  | EXIST. MONUMENT ASSEMBLY |

THE EXISTING CENTERLINE OF SURVEY AND THE EXISTING RIGHT OF WAY WERE ESTABLISHED USING O.D.O.T. PLANS S.H. (I.C.H.) NO.2 SEC. J (PART) WIDENING USR-20-15.37-17.97 FROM AUGUST 1932. (CLEVELAND-BUFFALO ROAD)

| REV.             | DATE    | DESCRIPTION              |
|------------------|---------|--------------------------|
| 1                | 7/15/02 | ADDED PROPOSED WATERLINE |
| COMPLETION DATE: |         |                          |

H:\2000\00253\dwg\RWP2.dwg 11/27/01 08:56:03 AM AM EST