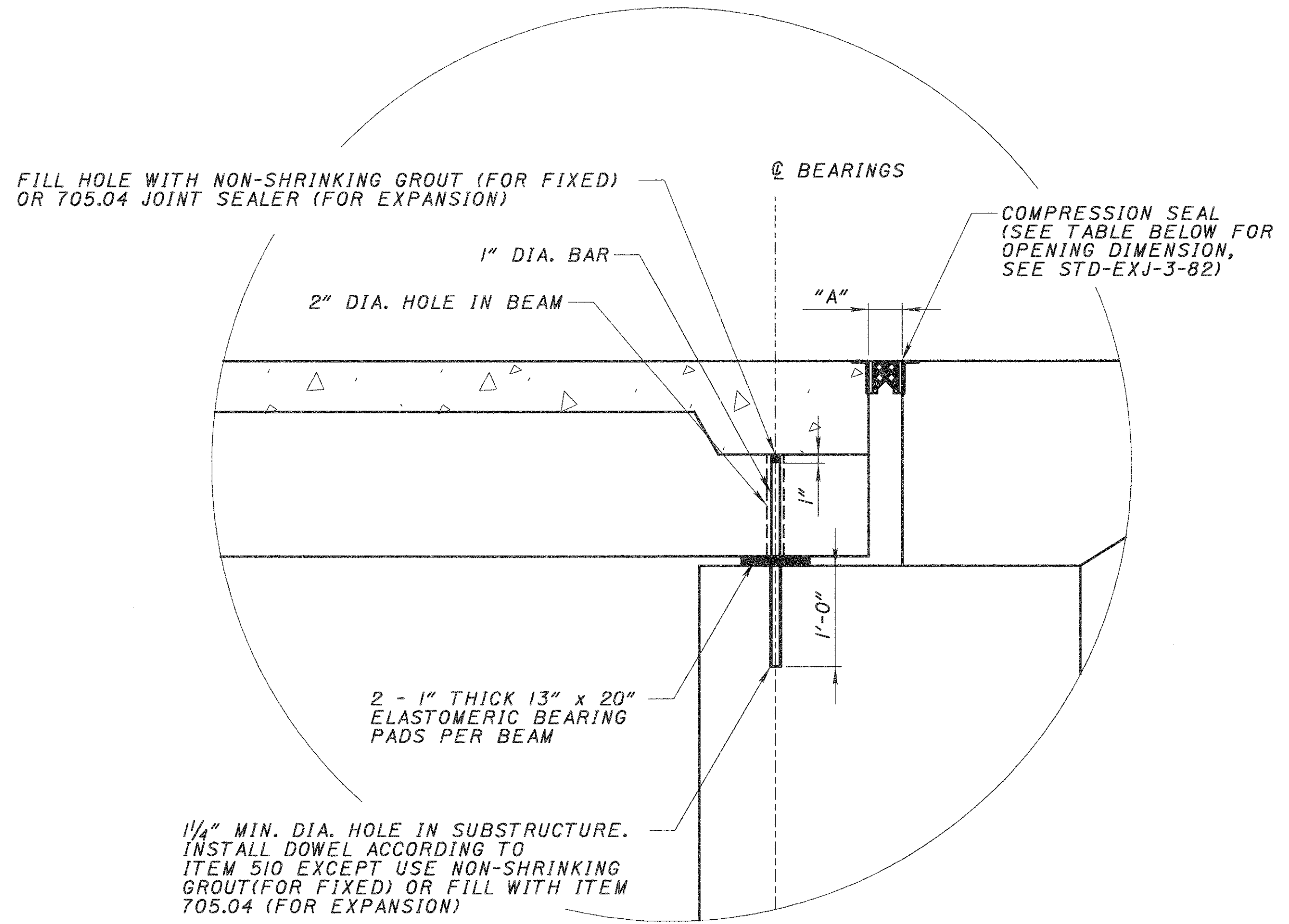
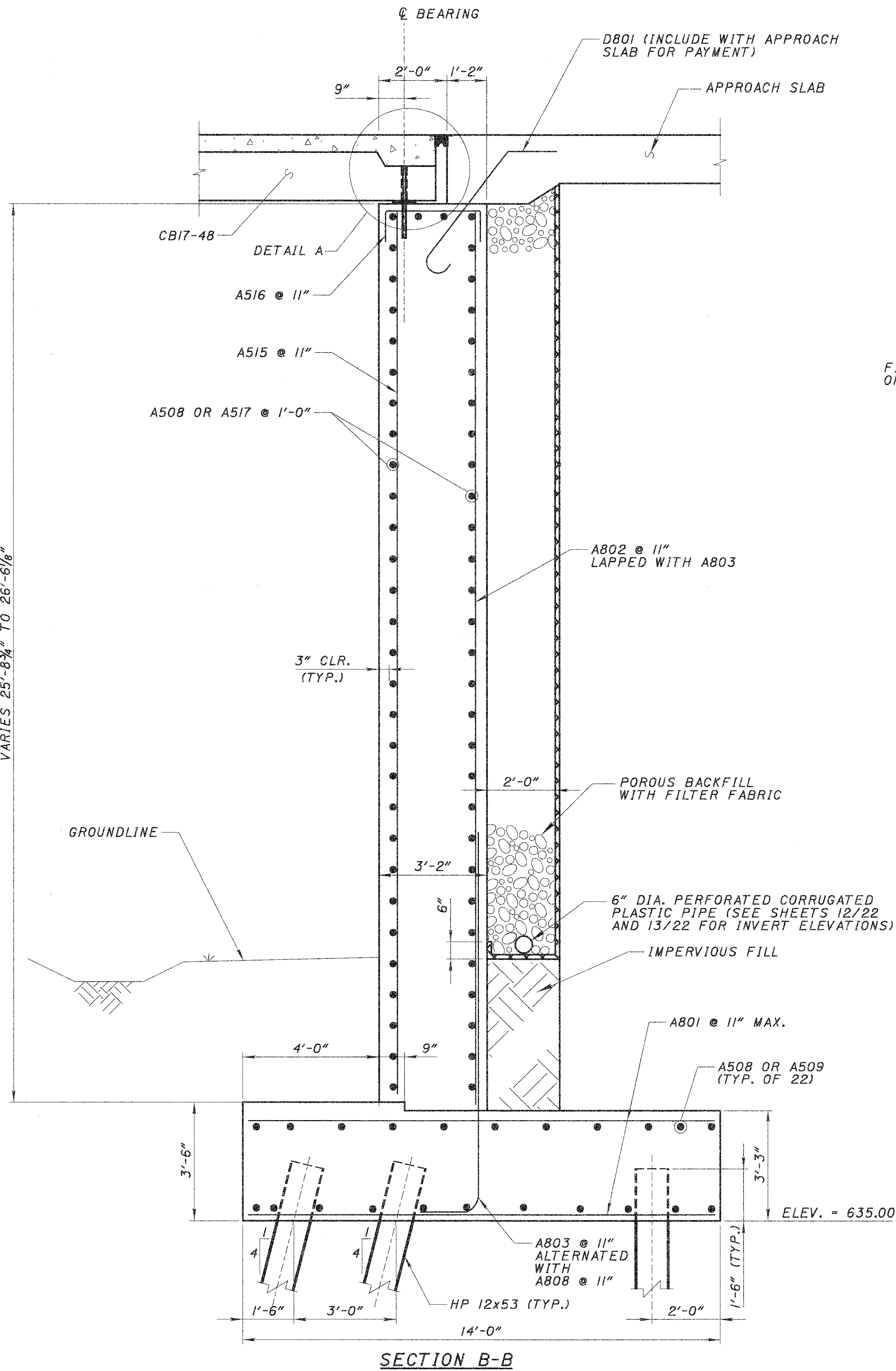


VARIES 25'-8 3/4" TO 26'-6 1/8"



FORWARD ABUTMENT EXPANSION JOINT OPENING TABLE

| TEMPERATURE (°F) | 30 | 40 | 50 | 60 | 70 | 80 | 90 |
|------------------|-------|-------|-------|-------|-------|-------|-------|
| "A" (IN) | 2 3/8 | 2 3/8 | 2 1/4 | 2 1/4 | 2 1/4 | 2 1/8 | 2 1/8 |

NOTES:
 FIXED ABUTMENT JOINT OPENING SHALL BE SET AT 2/4" PER STD. DWG. EXJ-3-82.
 ELASTOMERIC BEARINGS SHALL COMPLY WITH ITEM 516 AND AASHTO STANDARD SPECIFICATION FOR HIGHWAY BRIDGES, SECTION 18, BEARING DEVICES, DIVISION II, CONSTRUCTION, ARTICLES 18.4.5.1 AND 18.5.6.2. BEARINGS SHALL BE GRADE 3, 50 DUROMETER ELASTOMER, AND SHALL BE SUBJECT TO THE LOAD TESTING REQUIREMENTS DEFINED IN ARTICLE 18.7.4.5 OF THE AASHTO DOCUMENT LISTED ABOVE. BEARINGS WERE DESIGNED UNDER SECTION 14.6.6 OF SECTION 14, BEARINGS, DIVISION I, DESIGN. TESTING SHALL BE INCLUDED IN THE UNIT PRICE BID FOR THE BEARINGS, EACH.

\$DATE\$
\$FILE\$

DESIGN AGENCY
Baker
 2000 EAST NINTH STREET, SUITE 1220
 CLEVELAND, OHIO 44115

DATE
8-29-02

REVIEWED
 RBP
 STRUCTURE FILE NUMBER
4302303

DRAWN
 VLC
 REVISID

DESIGNED
 CDC
 CHECKED
 SCT

ABUTMENT DETAILS
 BRIDGE NO. LAK-20-1807
 OVER NORFOLK SOUTHERN FAIRPORT LINE

LAK-20-18.07

14 / 22

55
72