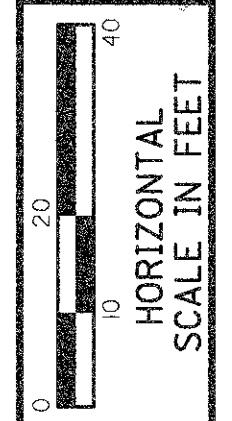


FORWARD A.S.

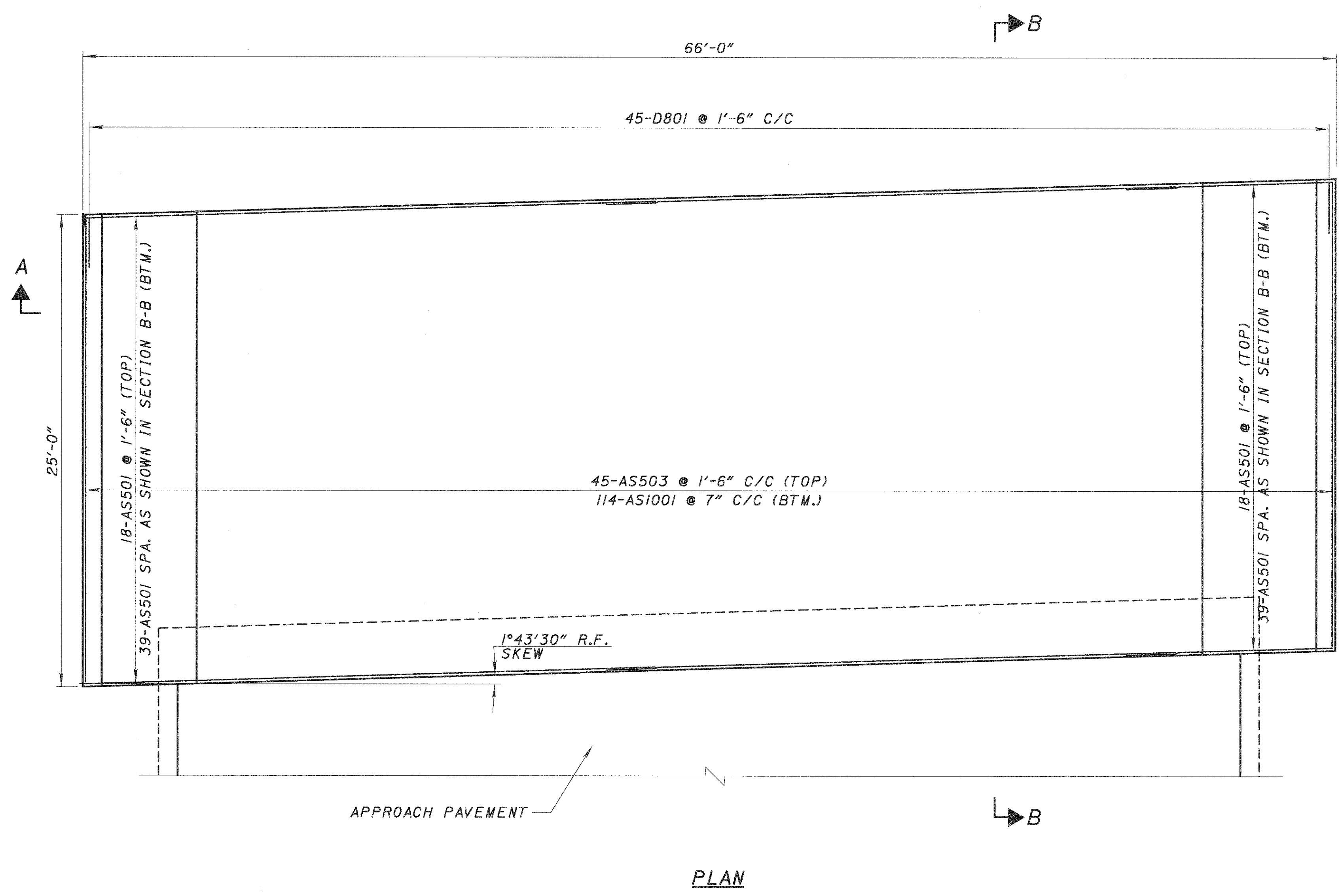
REAR A.S.



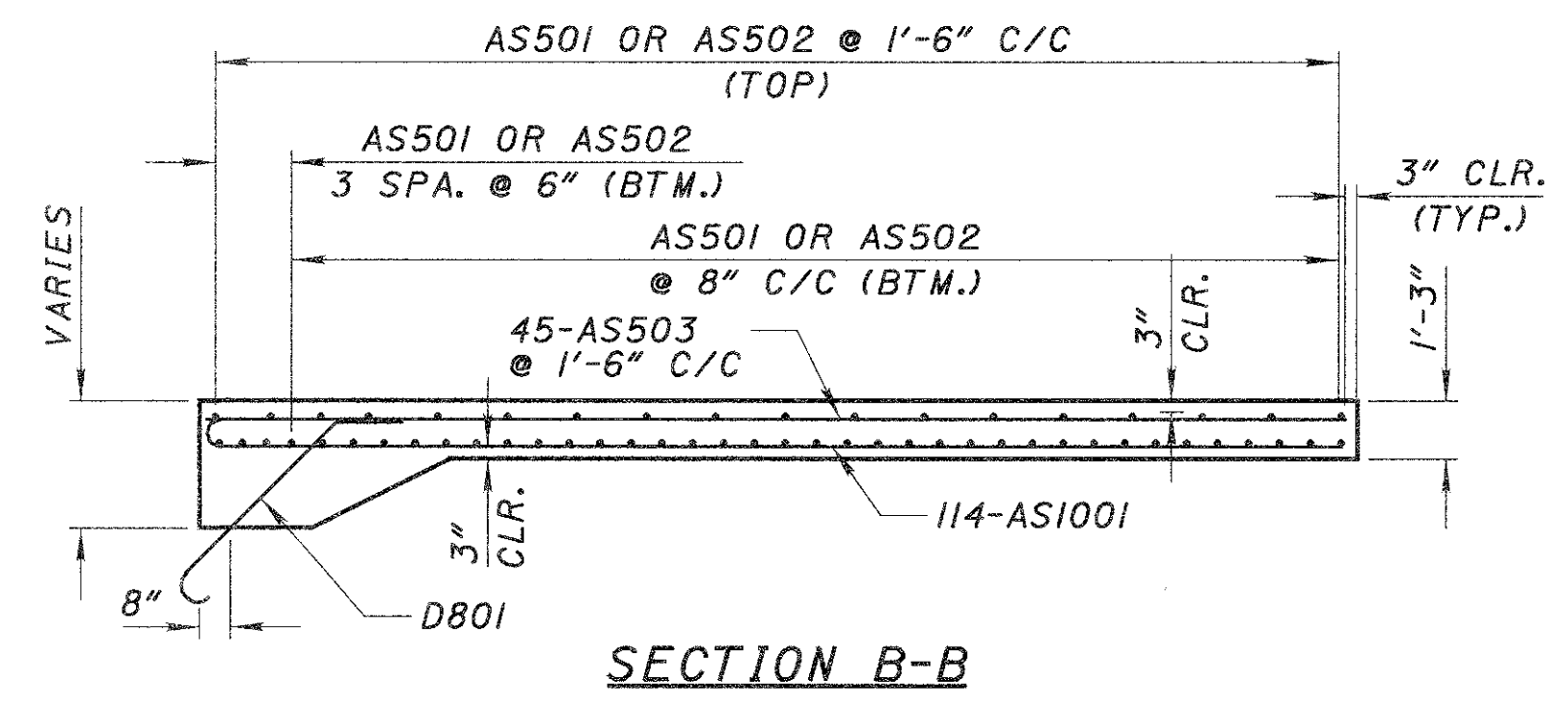
CALCULATED
VLC
CHECKED
SCT

APPROACH SLAB DETAILS
BRIDGE NO. LAK-20-1807

LAK-20-18.07

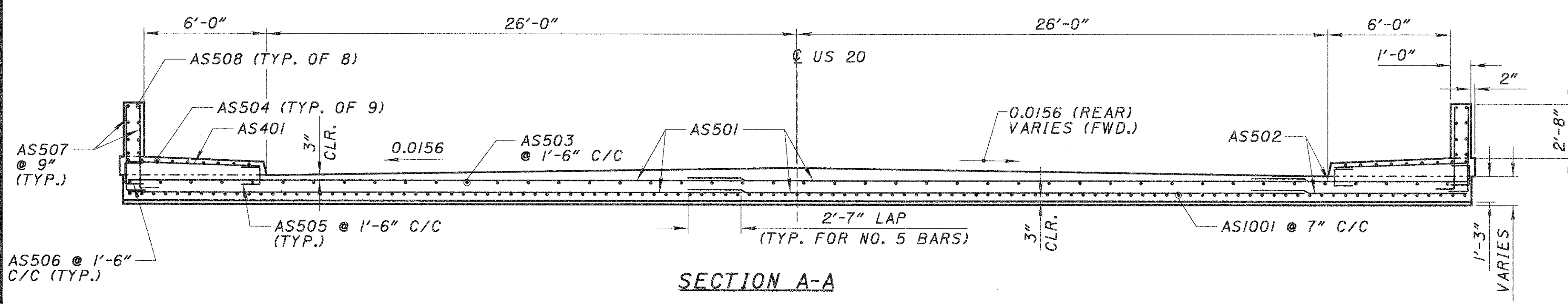


PLAN



APPROACH SLAB REINFORCING STEEL SCHEDULE LAK-20-1807

MARK	NUMBER			LENGTH	WEIGHT (LBS)	TYPE	DIMENSIONS					
	REAR	FWD	TOTAL				A	B	C	D	E	
D801	45	45	90	7'-0 ³ / ₄ "	1698	28	4'-9 ¹ / ₄ "	1'-5"				
AS1001	114	114	228	25'-11"	25422	19	24'-6"					
AS501	114	114	228	30'-0"	7135	STR						
AS502	57	57	114	10'-8 ¹ / ₄ "	1270	STR						
AS503	45	45	90	24'-6"	2300	STR						
AS504	18	18	36	24'-6"	920	STR						
AS505	36	36	72	2'-5 ³ / ₄ "	187	18	0'-13"	0'-10"	0'-10"			
AS506	36	36	72	2'-8 ³ / ₄ "	205	18	1'-4"	0'-10"	0'-10"			
AS507	136	136	272	4'-11 ¹ / ₂ "	1407	1	0'-10"	4'-3"				
AS508	16	16	32	24'-6"	818	STR						
AS401	36	36	72	6'-6"	488	STR						
TOTAL					41850							



SECTION A-A

NOTES:

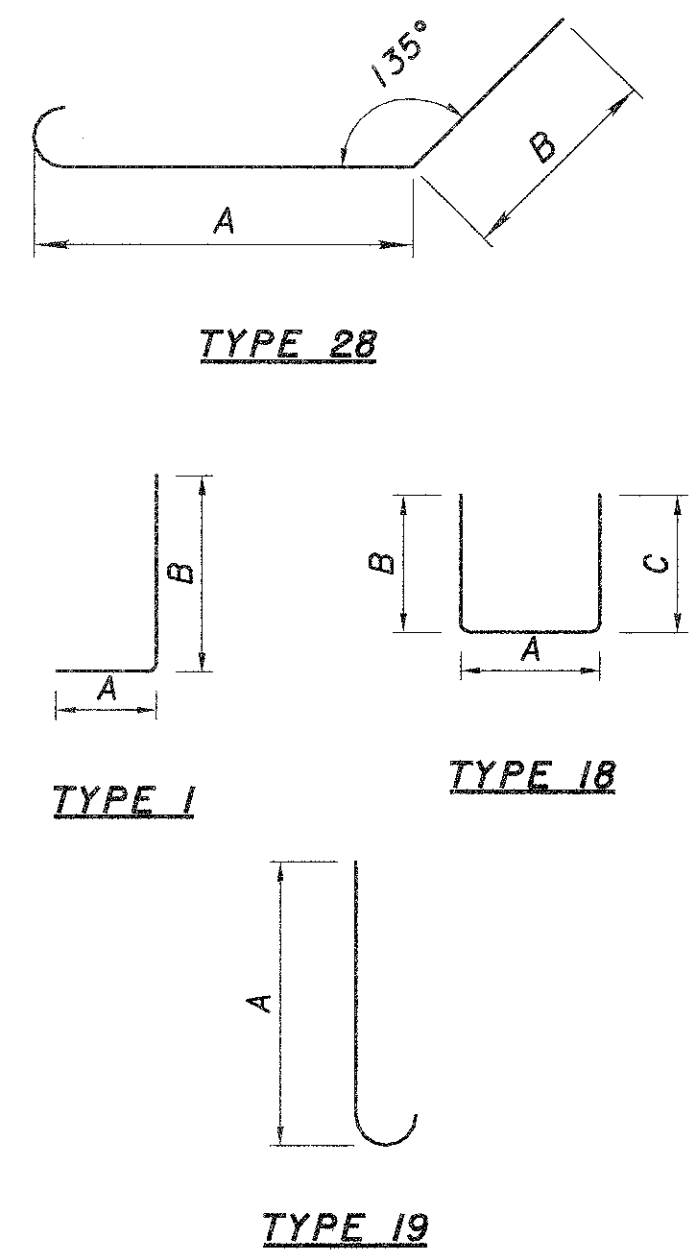
THE BAR SIZE NUMBER IS SPECIFIED ON THE PLANS IN THE BAR MARK COLUMN. THE FIRST DIGIT WHERE THREE ARE USED, AND THE FIRST TWO DIGITS WHERE FOUR ARE USED INDICATE THE BAR SIZE NUMBER. FOR EXAMPLE, AS601 IS A #6 BAR. BAR DIMENSIONS SHOWN ARE OUT TO OUT UNLESS OTHERWISE INDICATED.

STD. WRITTEN IN PLACE OF A DIMENSION INDICATES A STANDARD BEND AT THE END OF THE BAR.

STR. IN THE BAR TYPE COLUMN INDICATES A STRAIGHT BAR.

ALL REINFORCING STEEL TO BE EPOXY COATED.

SEE STD. DWG. AS-1-81 FOR ADDITIONAL DETAILS.



L:\Projects\0001\24580_Lak-20\Drawings\Approach.dgn 25-OCT-2002 11:36AM Administrator