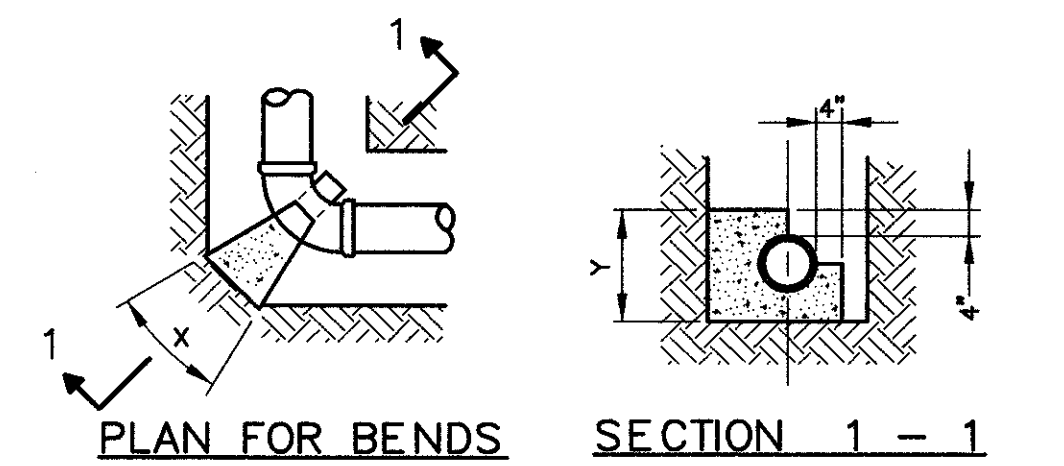


- NOTES:**
1. BEAM WILL BE CAMBERED TO ACCOUNT FOR DEAD LOAD DEFLECTIONS.
 2. THE 12" TEMP. WATER MAIN SHALL BE WRAPPED IN 2" THICK GLASS FIBER PREFORMED PIPE INSULATION ENCASED IN A 360° INSULATION PROTECTION SHIELD. REFER TO ITEM 638--SPECIAL--12" WATER MAIN, DUCTILE IRON PIPE, ANSI CLASS 53, MECHANICAL JOINTS AND FITTINGS AS PER PLAN, PARAGRAPH "MATERIAL" FOR MORE INFORMATION ON SHEET 35/72.
 3. ONE FULL LENGTH OF PVC PIPE SHALL BE USED BETWEEN THE EXISTING WATER MAIN AND THE ADJACENT 45° BEND, TYPICAL 2 PLACES.
 4. RESTRAIN JOINTS THAT CONNECT TO EXISTING WATER MAIN.
 5. ALL MECHANICAL JOINT FITTINGS AND PIPE JOINTS SHALL BE RESTRAINED WITH MEGALUG SERIES 2000 AS MANUFACTURED BY EBAA OR AN APPROVED EQUAL.
 6. THRUST BLOCKS PER THRUST BLOCKING DETAIL SHALL BE INSTALLED AT ALL FITTINGS WHICH ARE IN CONTACT WITH EARTH.
 7. TEMPORARY WATER MAIN SHALL BE 12" PVC DR14 AWWA C900.
 8. JOINTS CONNECTING PVC TO CAST IRON SHALL REQUIRE TRANSITION GASKETS.
 9. ALL FITTINGS SHALL BE DUCTILE IRON AND SHALL BE POLYETHYLENE WRAPPED.
 10. TIE 45° VERTICAL BENDS TOGETHER WITH FOUR (4) ASTM A307 7/8" DIAMETER RODS AND NUTS. PAINT WITH COAL TAR EPOXY.
 11. CONTRACTOR SHALL VERIFY EXISTING PIPE SIZE AND MATERIAL PRIOR TO ORDERING ANY MATERIAL.

SIZING SCHEDULE

BEARING FACE (X Y) IN SQ. FT. CONCRETE VOLUME IN CU. YD.			
45° BEND			
SOIL BEARING CAPACITY			
1000 P.S.F.	3000 P.S.F.	5000 P.S.F.	7500 P.S.F.
2.70	0.90	0.54	0.32
0.12	0.06	0.06	0.04
5.50	1.83	1.10	0.64
0.15	0.10	0.07	0.04
9.60	3.20	1.92	1.12
0.23	0.15	0.09	0.05
15.70	5.23	3.14	1.82
0.34	0.20	0.13	0.08
22.30	7.43	4.46	2.56
0.75	0.49	0.32	0.19
30.20	10.06	6.04	3.52
0.98	0.64	0.42	0.25
39.10	13.03	7.92	4.64
1.21	0.79	0.51	0.30



ALL CONCRETE BLOCKING MUST HAVE ITS ENTIRE FACE (X & Y) BEARING SURFACE AGAINST UNDISTURBED SOIL AND ALL VERTICAL NON-BEARING SURFACES SHALL BE FORMED SO AS TO KEEP CONCRETE FROM JOINTS. BLOCKING DESIGN BASED ON COMBINED WORKING PRESSURE PLUS WATER HAMMER OF 240 PSI AND FOR BEARING CAPACITY FOR SAND - 1000 PSF, SAND AND GRAVEL - 3000 PSF, SHALE - 5000 PSF.

THRUST BLOCKING DETAIL
(FOR TEMPORARY WATER MAIN)

ESTIMATED QUANTITIES				
ITEM	ITEM EXT.	TOTAL	UNIT	DESCRIPTION
638	98600	315	L.F.	WATER WORK, MISC: 12" PVC TEMPORARY WATER MAIN
-	-	8	EACH	45° BENDS *
502	11100	LUMP		TEMPORARY STRUCTURE

QUANTITIES CARRIED TO SHEET 39
* FOR INFORMATION ONLY