

FOR WATERWORK INFORMATION AND DETAILS, SEE SHEETS 34-39

BENCH MARK #1
 5/8" REBAR WITH RED CAP SET
 STA. 10+90.39, 24.75 LT
 ELEV. 665.47

BENCH MARK #2
 5/8" REBAR WITH RED CAP SET
 STA. 10+10.86, 116.17 RT
 ELEV. 642.47

LIMITS OF PARKING LOT RECONSTRUCTION

FOR QUANTITIES, SEE SHEETS 12-14.

FOUNDATION DATA

ESTIMATED PILE PAY LENGTH FOR
 HP 12 X 53 PILES
 REAR ABUTMENT: 28 FEET
 FORWARD ABUTMENT: 26 FEET

TRAFFIC DATA

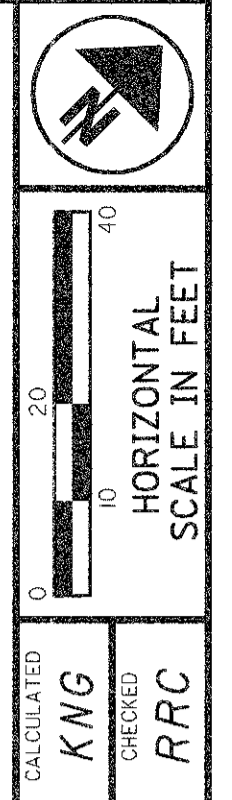
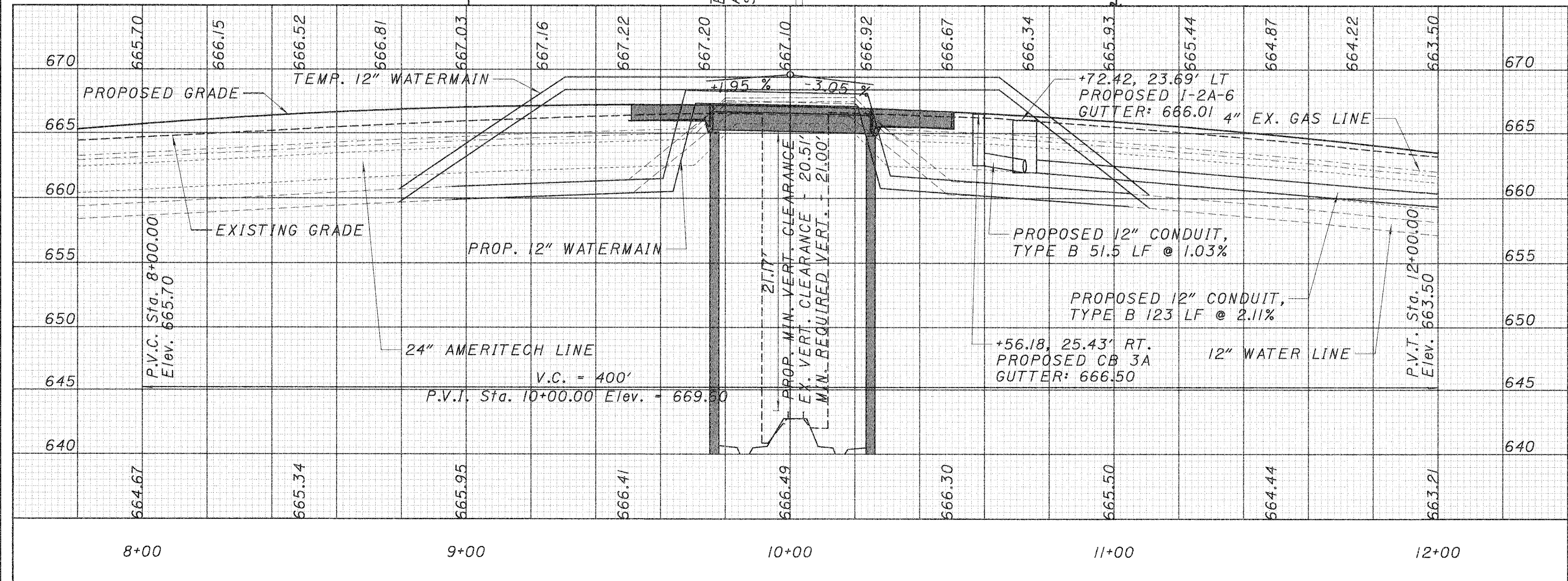
CURRENT ADT (2002)9300
 DESIGN YEAR ADT (2002)10900
 DESIGN YEAR ADTT (2022)1090

EXISTING STRUCTURE

SFN: 4302281
 TYPE: PRESTRESSED CONCRETE BOX BEAM WITH REINFORCED CONCRETE SUBSTRUCTURE
 SPAN: 21'-6 1/4" o/c BRGS.
 ROADWAY: 43'-1" f/f CURBS
 LOADING: HS-20-44 & ALTERNATE MILITARY
 WEARING SURFACE: 2 1/2" ASPHALT CONCRETE
 ALIGNMENT: TANGENT CROWN: 0.0156
 APPROACH SLABS: 25' LONG (AS-1-81)
 SKEW: 1°48' R.F. DATE BUILT: 1981

PROPOSED STRUCTURE

SFN: 4302303
 TYPE: SINGLE SPAN COMPOSITE PRESTRESSED BOX BEAM WITH REINFORCED CONCRETE SUBSTRUCTURE
 SPAN: 47'-1/4" o/c BRGS
 ROADWAY: 52'-0" f/f CURBS WITH 2' 6"-0" SIDEWALKS
 LOADING: HS-25-44 & ALTERNATE MILITARY
 WEARING SURFACE: MONOLITHIC CONCRETE
 ALIGNMENT: TANGENT
 APPROACH SLABS: 25' LONG (AS-1-81)
 SKEW: 1°43'30" R.F. CROWN: 0.0156 (LT ONLY)
 SUPERELEVATION: VARIES
 LATITUDE: N 41°44'39" LONGITUDE: E 81°13'55"



PLAN AND PROFILE
STA. 8+00 TO STA. 12+00

LAK-20-18.07

L:\Projects\000T\24580_Lak-20\Drawings\plan-pro-2.dgn 25-OCT-2002 11:56AM Administrator