

SCHEMATIC PLAN

LAK-20-18.07

RAILROAD CURVE 1
 P.I. Sta = 102+85.14
 D = 26° 00' 00" (LT)
 Dc = 5° 12' 31"
 R = 1,100.00'
 T = 253.96'
 L = 499.16'
 E = 28.93'

STA 10+00.00 @ CONSTRUCTION NORTH RIDGE RD. (US 20)
 = STA. 100+00 @ NORFOLK SOUTHERN RAILWAY

BEGIN WORK STA. 5+25

BEGIN PROJECT @ CONSTRUCTION STA. 6+25.00
 = @ R/W STA. 38+63.11, 0.65' LT

RAILROAD CURVE 1

SLM 18.00

EXISTING CONTROL POINT @ R/W

N: 759076.9521
 E: 2318321.0543
 EL: 662.66
 IPS #44

N: 759110.7757
 E: 2318349.4326
 EL: 663.48
 IPS #45

N: 759041.9851
 E: 2318350.3197
 STA. 7+61.89,
 OFFSET 0.62' LT
 @ CONST. US 20 =
 STA. 40+00 @ R/W

N: 759027.4701
 E: 2318401.1084
 EL: 664.37
 RRSS #43

@ CONSTRUCTION KEY POINTS

ITEM	STATION	NORTHING	EASTING
PC-1	11+33.84	759,304.4330	2,318,613.8827
PI-1	12+37.86	759,377.7069	2,318,687.7130
PT-1	13+40.66	759,467.7358	2,318,739.8164
PC-2	14+69.39	759,579.1467	2,318,804.2945
PI-2	16+15.30	759,705.4349	2,318,877.3827
PT-2	17+59.77	759,810.3701	2,318,978.7691

EXISTING CONTROL POINT @ R/W

N: 759330.4753
 E: 2318583.2221
 EL: 663.02
 IPS #40

N: 759371.1425
 E: 2318623.6835
 EL: 662.45
 IPS #39

N: 759320.9263
 E: 2318631.2636
 STA. 11+57.77,
 0.79' RT
 @ CONST US 20 =
 STA. 43+95.90 @ R/W

N: 759293.0557
 E: 2318662.5533
 EL: 665.25
 RRSS #41

CURVE 1

P.I. Sta. 12+37.86
 D = 15° 09' 25" (RT)
 Dc = 7° 19' 42"
 R = 781.83'
 T = 104.02'
 L = 206.82'
 E = 6.89'
 emax = 0.027

@ R/W - CURVE 2

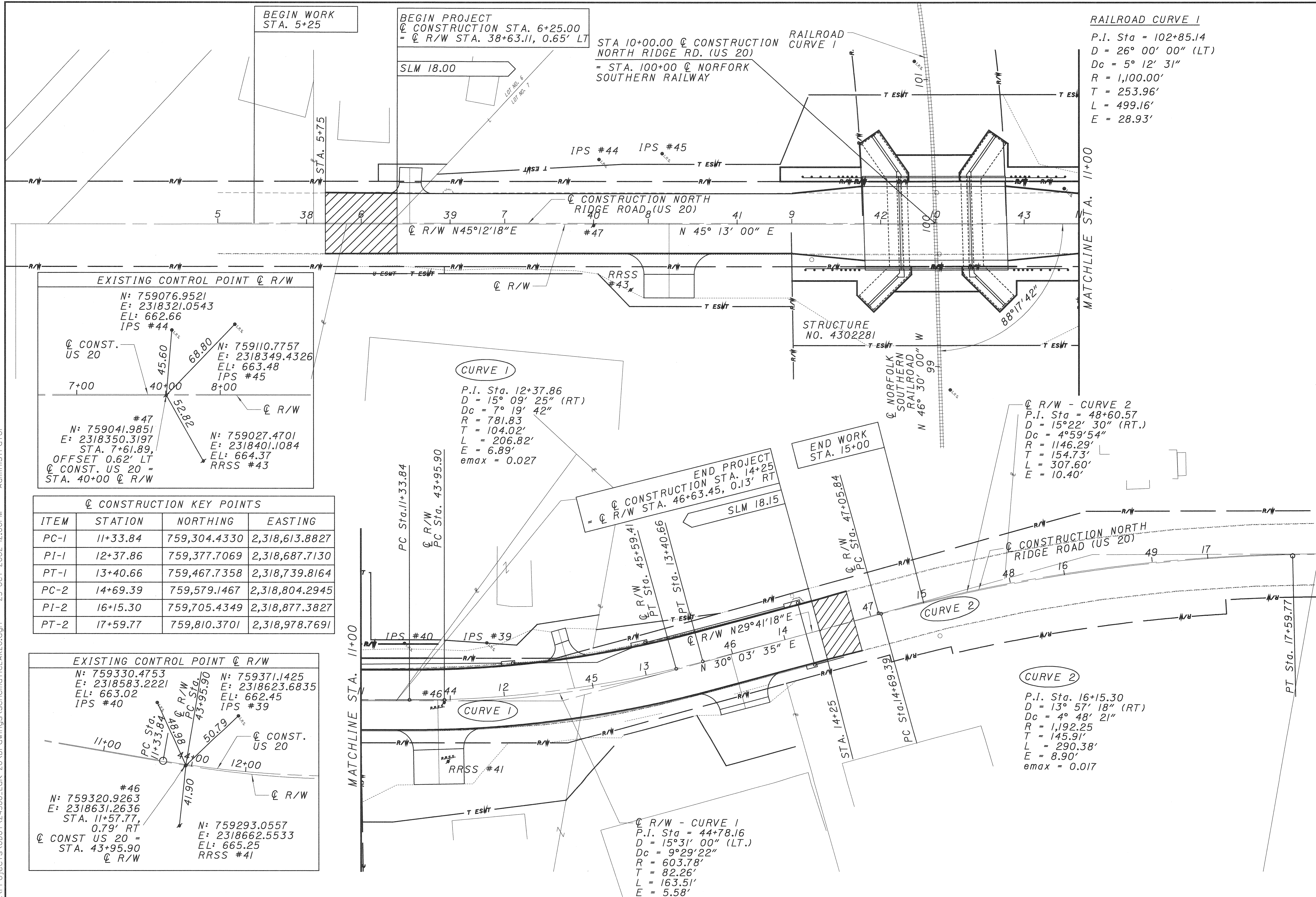
P.I. Sta = 48+60.57
 D = 15° 22' 30" (RT.)
 Dc = 4° 59' 54"
 R = 1146.29'
 T = 154.73'
 L = 307.60'
 E = 10.40'

CURVE 2

P.I. Sta. 16+15.30
 D = 13° 57' 18" (RT)
 Dc = 4° 48' 21"
 R = 1,192.25'
 T = 145.91'
 L = 290.38'
 E = 8.90'
 emax = 0.017

@ R/W - CURVE 1

P.I. Sta = 44+78.16
 D = 15° 31' 00" (LT.)
 Dc = 9° 29' 22"
 R = 603.78'
 T = 82.26'
 L = 163.51'
 E = 5.58'



L:\Projects\00T\24580_Lak-20\Drawings\schematic\AK20.dgn 25-OCT-2002 12:00PM Administrator