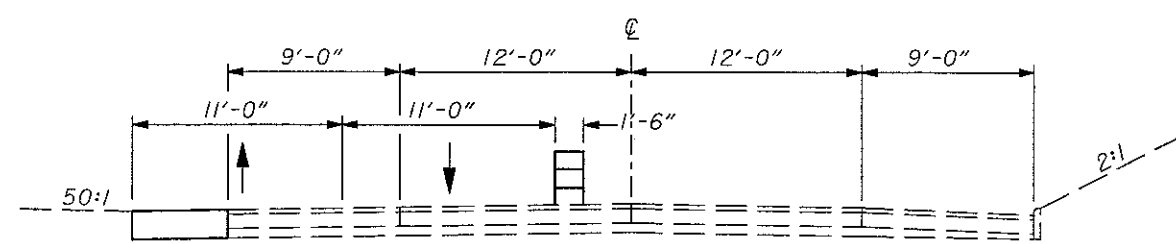


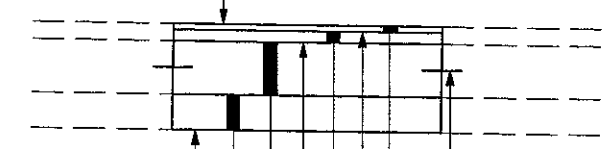
U.S. 20
PHASE 3A

ITEM 615 -
TEMPORARY PAVEMENT
REMOVE CURB



U.S. 20
PHASE 3B

MATCH EXIST. WEARING
COURSE THICKNESS



ITEM 203 - SUBGRADE
COMPACTION

ITEM 304 - AGGREGATE
BASE, AS PER PLAN

ITEM 451 - REINFORCED
CONCRETE PAVEMENT (MATCH
EXIST. CONCRETE THICKNESS)

ITEM 407 - TACK COAT

ITEM 448 - ASPHALT
CONCRETE, INTERMEDIATE
COURSE, PG64-22

TIE BAR

ITEM 448 - ASPHALT
CONCRETE, SURFACE
COURSE, PG64-22 (1 1/4")

ITEM 407 - TACK COAT
FOR INTERMEDIATE COURSE

TRENCH REPAIR DETAIL

(NOTE: ALL COSTS FOR REPAIRING PAVEMENT
SHALL BE INCLUDED IN ITEM 614 -
MAINTAINING TRAFFIC.)