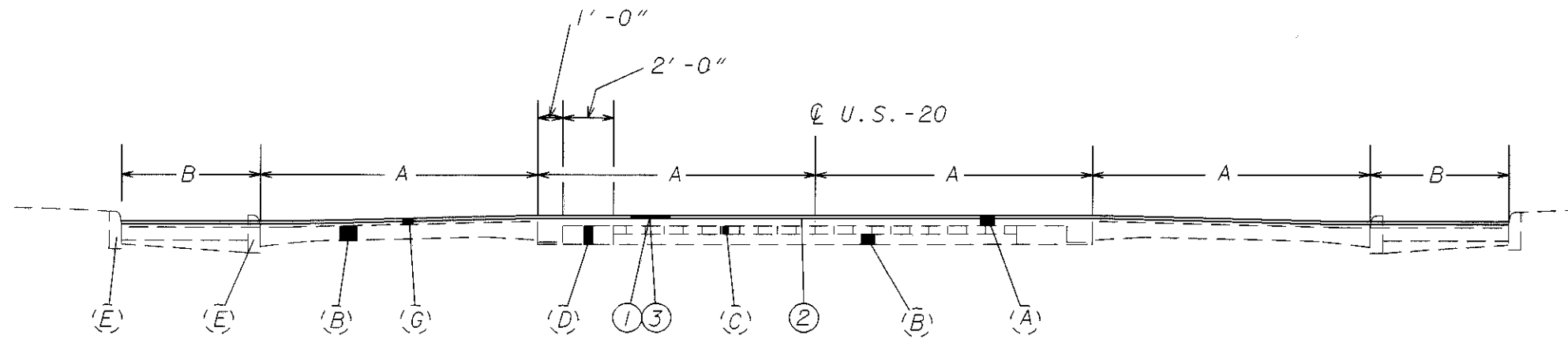
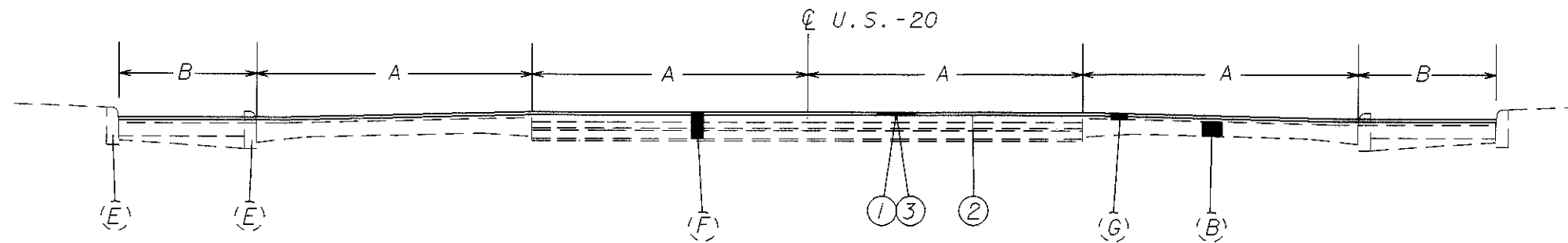


I:\PROJECTS\PI\14200\14200gva.dgn 27-NOV-2000 10:43AM jg...vse



SLM 17.60 TO SLM 19.35
 SLM 19.78 TO SLM 22.64
 SLM 27.62 TO SLM 28.52

LANE WIDTHS			
FROM	TO	'A'	'B'
17.40	17.60	10 FT.	0 FT.
17.60	18.78	11 FT.	0 FT.
18.78	23.19	10 FT.	0 FT.
27.52	28.52	11 FT.	VARIES 0 FT. TO 5.5 FT.



SLM 17.40 TO SLM 17.60
 SLM 19.35 TO SLM 19.78
 SLM 22.64 TO SLM 23.19
 SLM 27.52 TO SLM 27.62

EXISTING LEGEND

- (A) ASPHALT CONCRETE (5"-8")
- (B) REINFORCED CONCRETE BASE (7"-10")
- (C) BRICK WEARING SURFACE
- (D) ORIGINAL CONCRETE SHOULDER
- (E) CURB
- (F) ASPHALT CONCRETE ±11"
- (G) ASPHALT OVERLAY ±3"

PROPOSED LEGEND

- ① ITEM 254 - PAVEMENT PLANING, BITUMINOUS, AS PER PLAN (1 1/2")
- ② ITEM 407 - TACK COAT
- ③ ITEM 446 - 1-1/2" ASPHALT CONCRETE SURFACE COURSE, TYPE 1H, AS PER PLAN

TYPICAL SECTIONS US-20

LAKE COUNTY
LAK-20-17.40