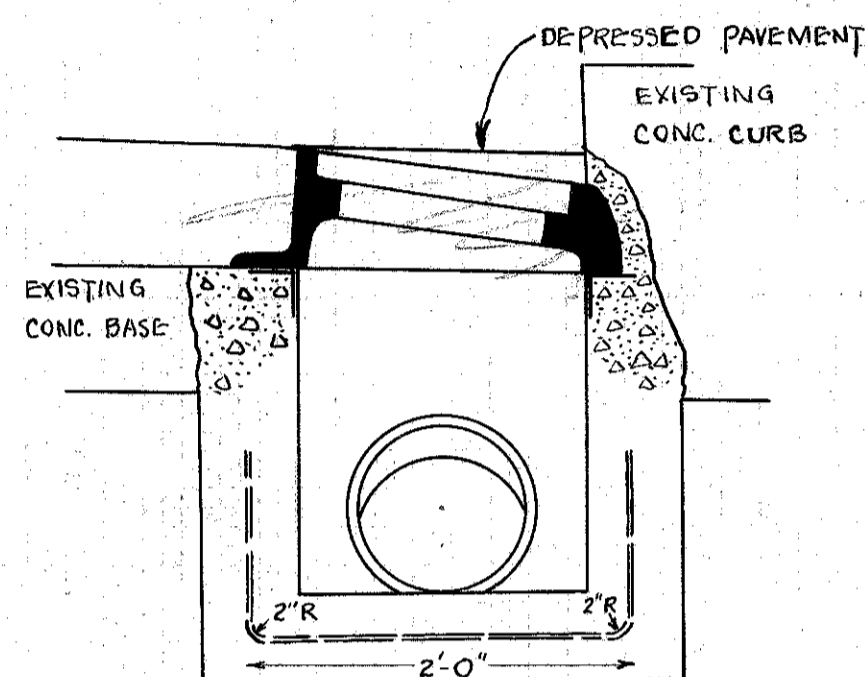
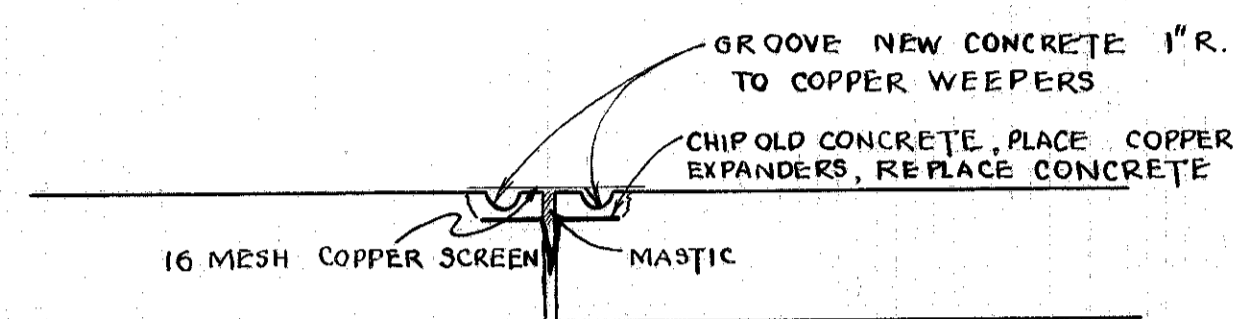


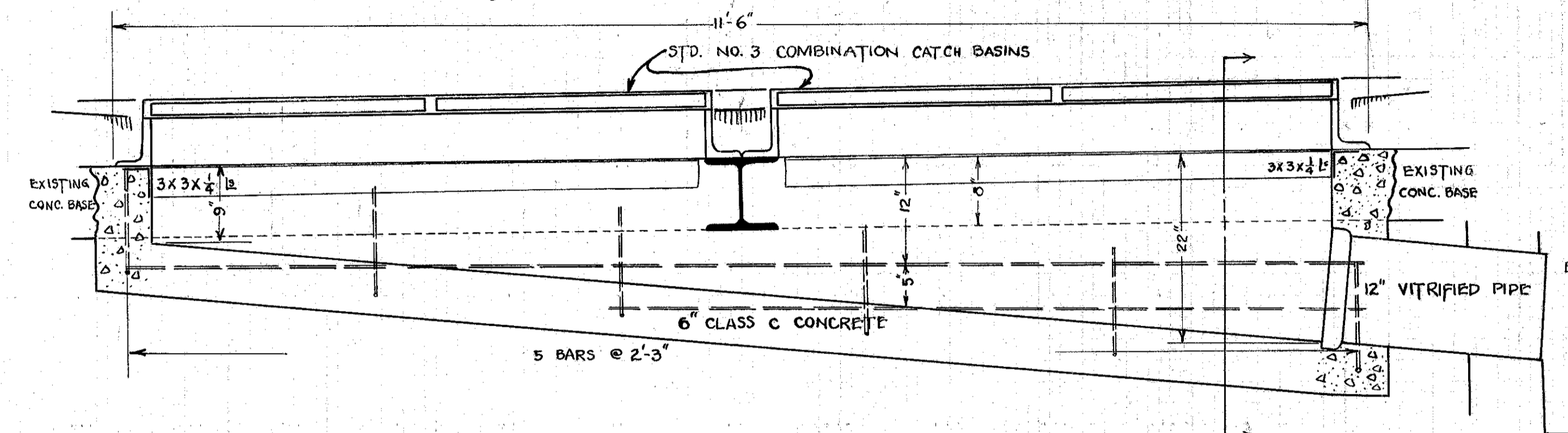
U.S. ROUTE 20 - GRAND RIVER BRIDGE - EAST OF PAINESVILLE, OHIO  
JULY, 1941  
LA-20-172

Level Book 13

Expansion Joint  
1" = 1'



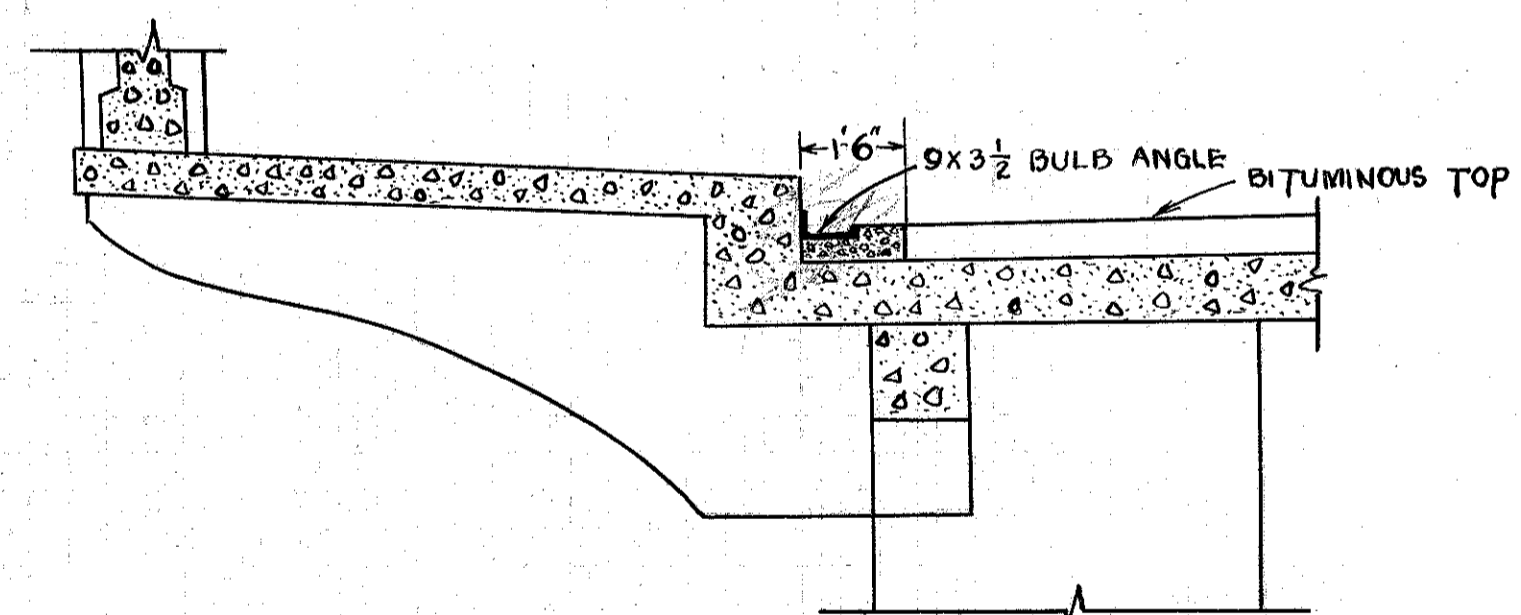
Longitudinal Drains  
1" = 1'



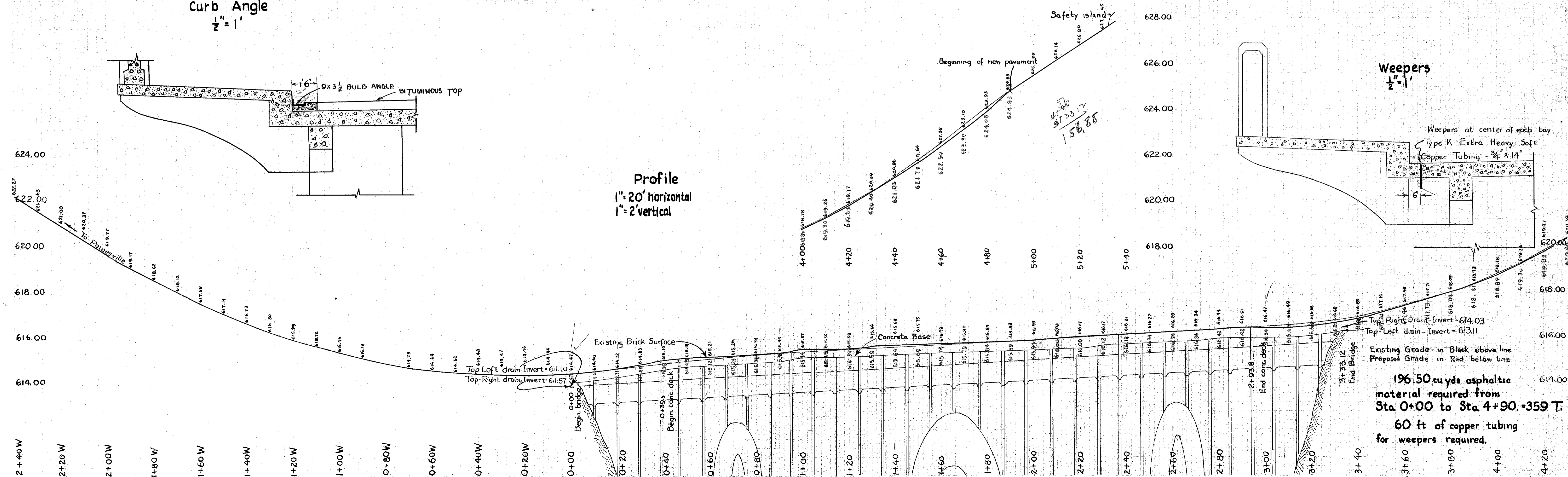
BILL OF MATERIALS

- 2 GUTTER FRAMES FOR COMB. C.B. NO. 3
- 4 GRATES FOR C.B. NO. 3
- 1 SECTION 12" VITRIFIED PIPE
- 1 SECTION S110 2'-6" LONG
- 4 3x3x1/2" 5'-0" LONG
- 2 3x3x1/2" 1'-6" LONG
- 6 1/2" PH REINFORCING BARS @ 4'-0" LG
- 2 3/4" PH BARS @ 11'-6" LONG
- 2 1/2" PH BARS @ 7'-0" LONG
- 2 CU YDS CLASS C CONCRETE

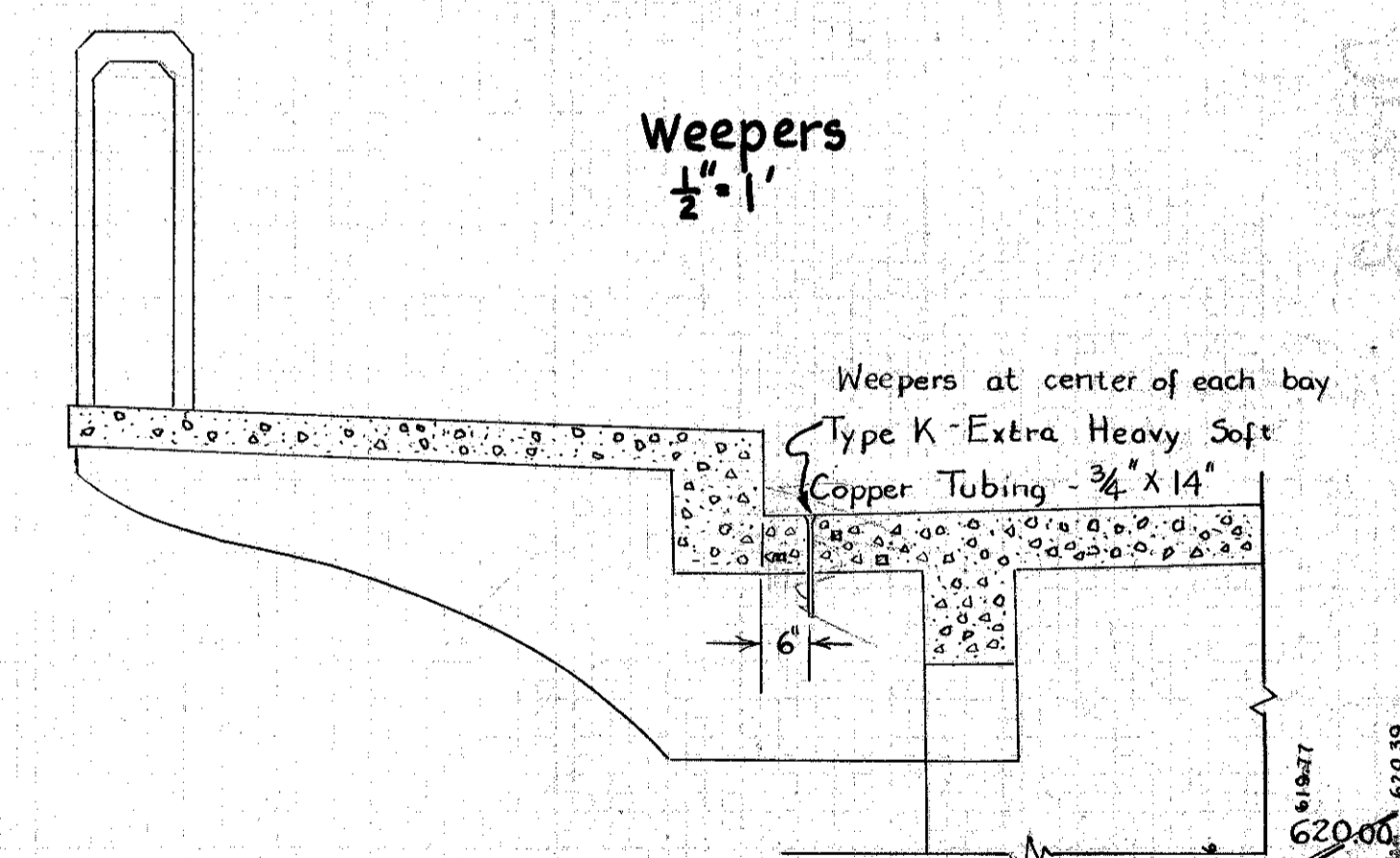
Curb Angle  
1/2" = 1'



Profile  
1" = 20' horizontal  
1" = 2' vertical



Weepers  
1/2" = 1'



Existing Grade in Black above line  
Proposed Grade in Red below line

196.50 cu yds asphaltic material required from Sta 0+00 to Sta 4+90. -359 T.

60 ft of copper tubing for weepers required.