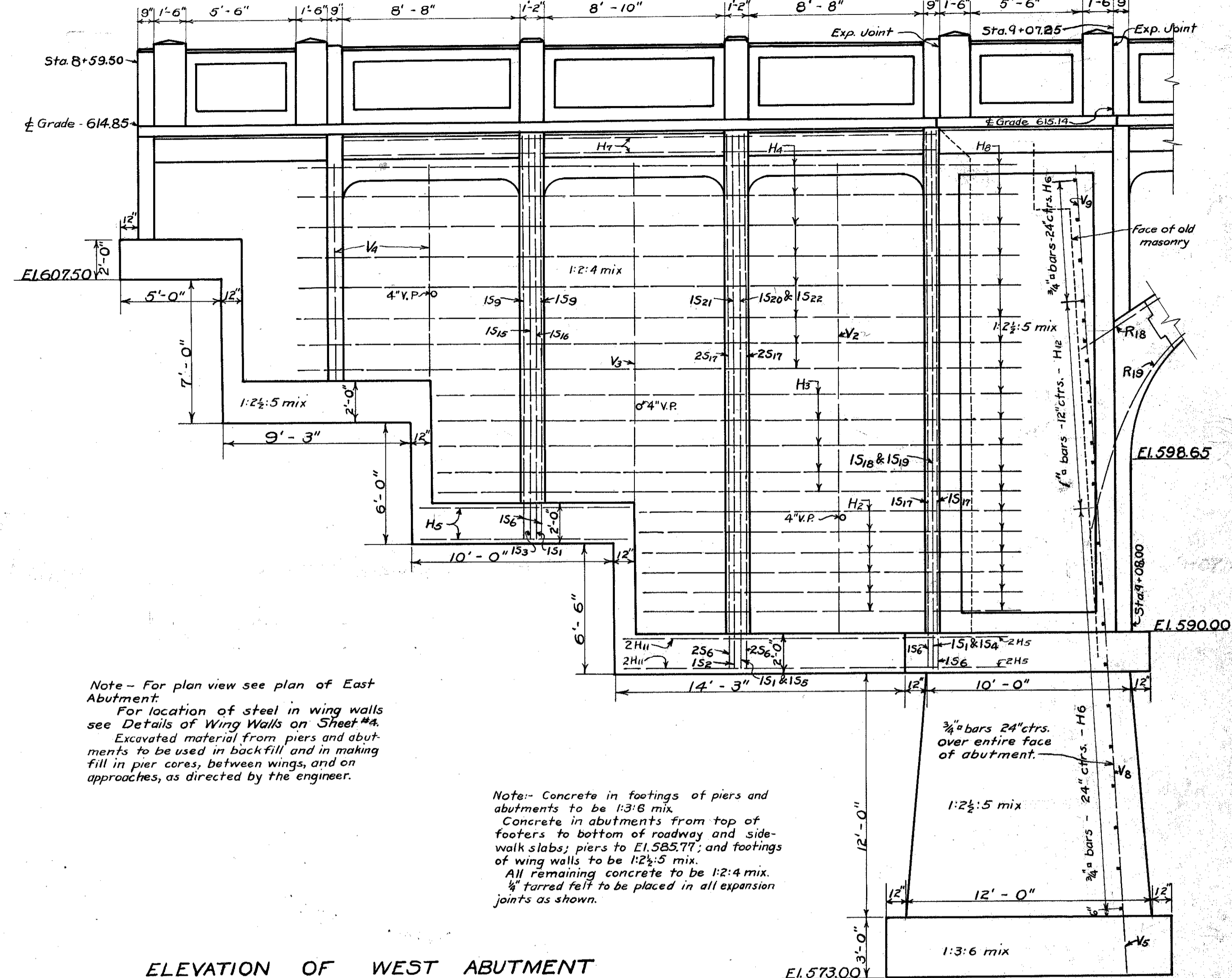


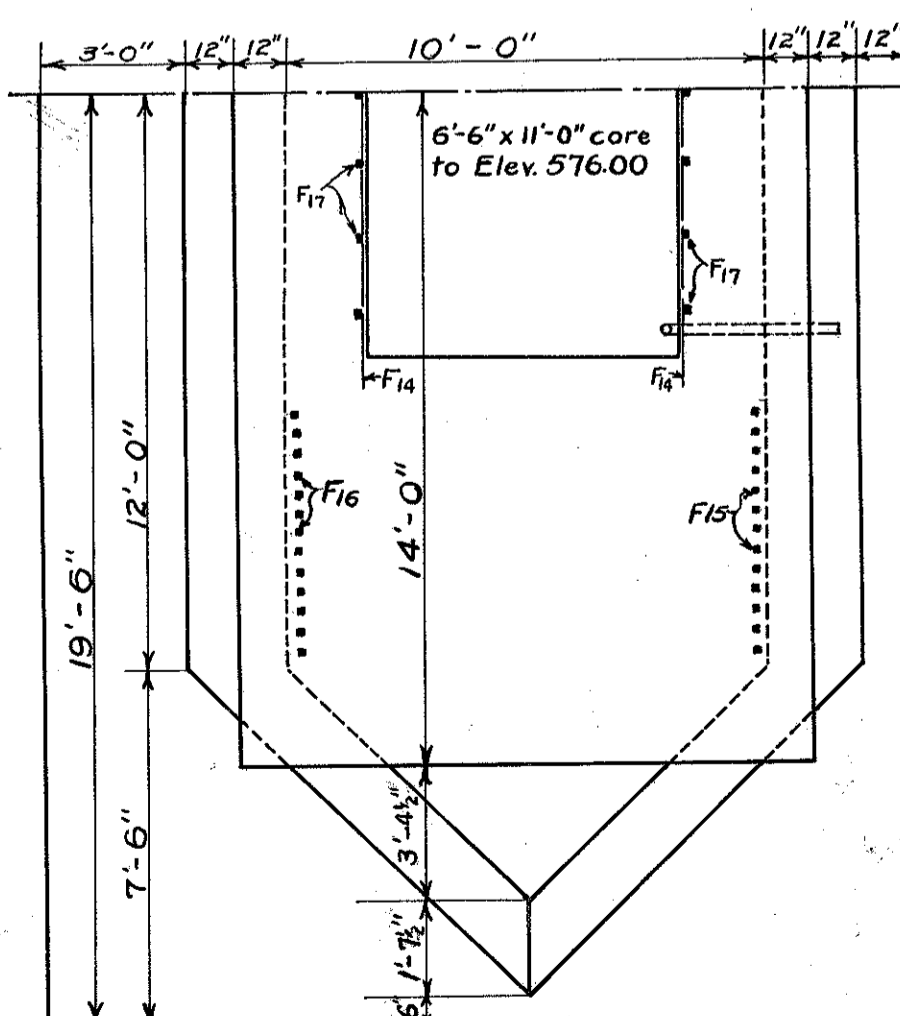
Bends	Size	Length	Mark	Location	No.	Bends	Size	Length	Mark	Location	No.
Straight	1/2" φ	32'-0"	A1	Sidewalk Slab-All Arches	84						
"	"	19'-6"	A2	S'walk Slab-Ends Arches A&C	28						
"	"	34'-0"	A3	S'walk Slab-Central Part All Arches	48						
"	"	33'-6"	A4	" " - Ends Arch B	24						
"	"	11'-6"	A5	" " - " Arches A&C	48						
Straight	3/8" φ	7'-0"	A6	Spacer Bars-All Arches	144						
Straight	1/2" φ	8'-0"	A7	S'walk Slab Over Piers	52						
"	5/8" φ	32'-0"	B1	Roadway Slab-All Arches	156						
"	"	19'-6"	B2	" Slab-Ends Arches A&C	52						
"	"	8'-0"	B3	" Slab - Over Piers	96						
"	"	34'-0"	B4	R'way Slab-Central Part All Arches	96						
"	"	33'-6"	B5	" " - Ends Arch B	48						
"	"	11'-6"	B6	" " - " Arches A&C	96						
Straight	3/8" φ	25'-6"	B7	" " Spacer Bars-All Arches	144						
"	1 1/8" φ	14'-0"	R1	Arch Dowels - Arch B	68						
"	"	12'-0"	R2	" " - " "	68						
"	"	25'-0"	R3	" Steel - " "	68						
"	"	23'-0"	R4	" " - " "	68						
"	"	30'-0"	R5	" " - " "	112						
"	1" φ	34'-0"	R6	" " - " "	44						
"	3/4" φ	7'-0"	R7	Hooping for Arch Steel-Arch B	124						
"	"	6'-6"	R8	" " - " "	20						
"	"	7'-0"	R9	" " - " "	24						
"	"	7'-6"	R10	" " - " "	24						
"	"	8'-0"	R11	" " - " "	16						
"	"	8'-6"	R12	" " - " "	16						
"	"	9'-6"	R13	" " - " "	8						
"	"	10'-0"	R14	" " - " "	8						
"	"	10'-6"	R15	" " - " "	8						
Straight	"	7'-0"	P1	Posts over Arch B	24						
"	"	10'-6"	P2	" " - " "	24						
"	"	15'-6"	P3	" " - " "	24						
"	"	22'-6"	P4	" " - " "	24						
"	"	9'-6"	P5	Post Dowels over Arch B	24						
"	"	14'-6"	P6	" " - " "	12						
"	"	12'-6"	P7	" " - " "	12						
"	"	11'-6"	P8	" " - " "	24						
"	"	13'-6"	P9	" " - " "	12						
"	"	8'-6"	P10	" " - " "	6						
Straight	1" φ	19'-6"	F1	Footings Pier 2	39						
"	3/4" φ	38'-6"	F2	Spacer Bars-Footings-Piers	20						
"	1 1/2" φ	17'-0"	F3	Face of Pier 2	26						
"	"	14'-0"	F4	" " - " "	26						
"	"	19'-0"	F5	" " - " "	104						
"	"	8'-0"	F6	Dowels in Pier Face	104						
"	"	7'-0"	F7	" " - " "	104						
"	1/2" φ	16'-6"	F8	" " - " Along Core	14						
"	"	4'-0"	F9	" " - " "	52						
"	"	28'-0"	F10	Steel in Pier around Core	80						
"	"	5'-0"	F11	Dowels in Pier Footings	28						
"	"	11'-0"	F12	Horizontal Steel-Pier Cores	56						
Straight	"	28'-6"	F13	" " - " "	56						
"	3/4" φ	15'-0"	F14	" " - " "	24						
"	"	9'-6"	P11	Posts over Arches A&C	48						
"	"	8'-6"	P12	" " - " "	48						
"	"	13'-6"	P13	" " - " "	24						
"	"	8'-6"	P14	" " - " "	24						
Straight	1" φ	20'-0"	R16	Arch Dowels	40						
"	"	10'-0"	R17	" " - " "	40						
"	"	8'-0"	R18	" " - " "	40						
"	"	15'-0"	R19	" " - " "	40						
"	"	14'-0"	R20	" Steel	80						
"	"	15'-0"	R21	" " - " "	80						
"	"	28'-0"	R22	" " - " "	48						
Straight	3/4" φ	7'-6"	R23	Hooping for Arch Steel	120						
"	1" φ	22'-0"	M1	Typical Floor Beams	38						
"	1 1/8" φ	22'-0"	M2	9' Beams at Piers & Abuts.	8						
"	"	25'-6"	M3	Typical Floor Beams	38						
"	1 1/2" φ	25'-6"	M4	9' Beams at Piers & Abuts.	8						
"	1 1/2" φ	8'-0"	M5	Stirrups for Typical Beams	399						
Straight	1" φ	39'-0"	H12	Face of Both Abuts.	21						

Total Reinforcing Steel = 173750#

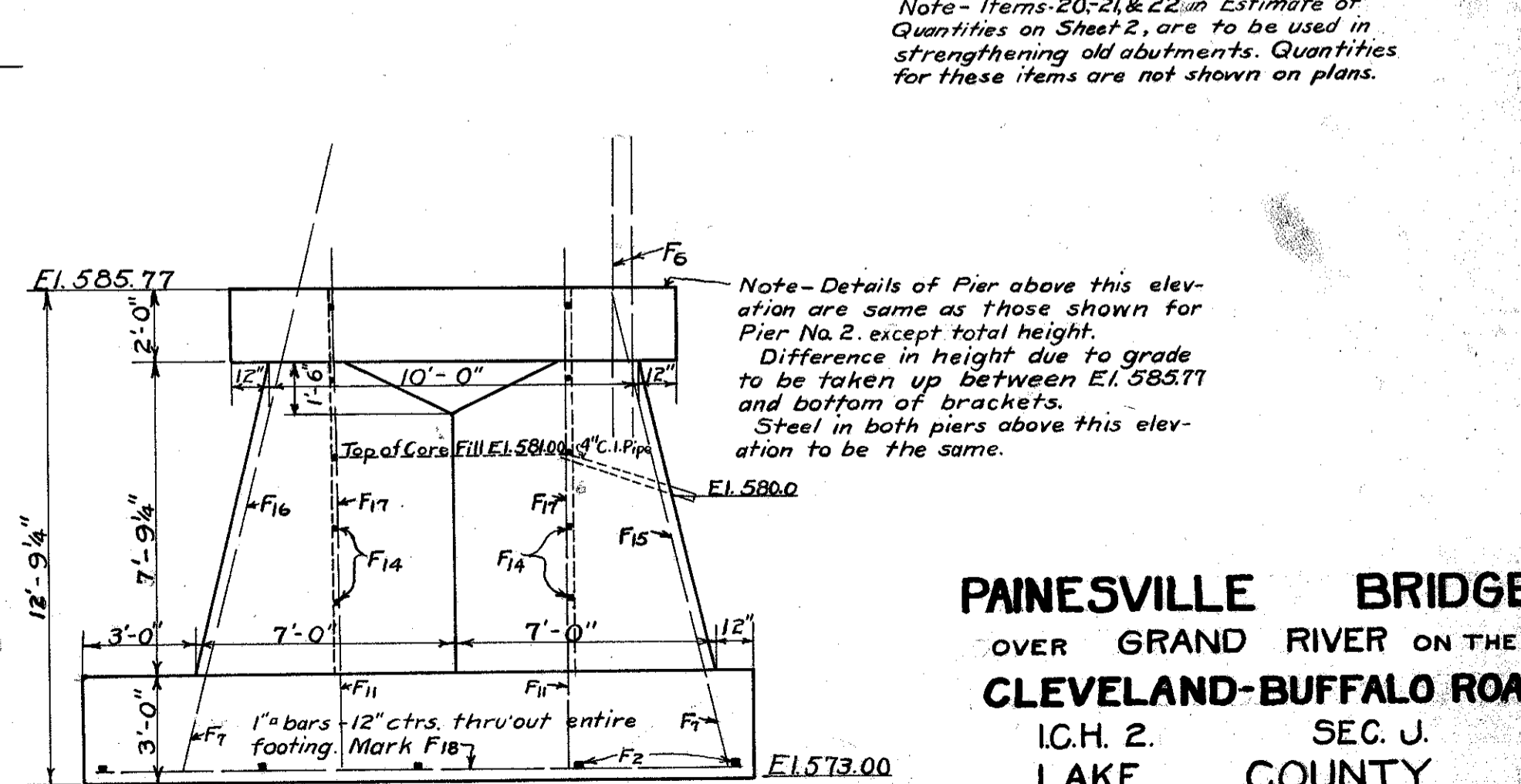
3/8" φ = 7179#  
 1/2" φ = 16198#  
 5/8" φ = 17230#  
 3/4" φ = 23650#  
 1" φ = 1025#  
 1 1/8" φ = 49465#  
 1 1/2" φ = 59003#



ELEVATION OF WEST ABUTMENT  
Scale - 1/4" = 1'



PLAN OF PIER NO. 1  
Scale - 1/4" = 1'



ELEVATION OF PIER NO. 1  
Scale - 1/4" = 1'