

RECORDED INFO  
ON RW SHEETS

# CENTERLINE SURVEY PLAT

LAKE COUNTY OHIO

ORIGINAL PAINESVILLE TOWNSHIP LOT NOS 6, 8, & 10 IN TRACT 2

I HEREBY CERTIFY THIS PLAT TO BE A TRUE DELINEATION OF A SURVEY  
MADE BY WOODRUFF INC FOR THE OHIO DEPARTMENT OF TRANSPORTATION

DATE MAY 16, 1985 BY *William J. Vondra*  
REGISTERED PROFESSIONAL SURVEYOR No. 5849

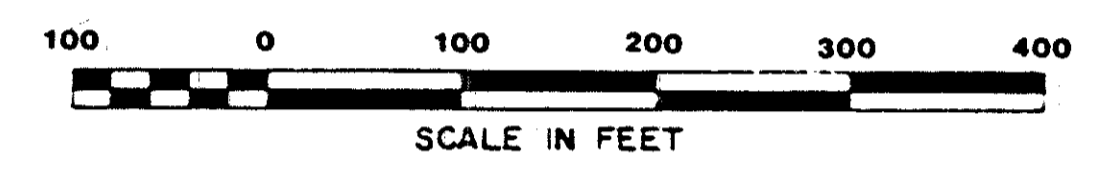
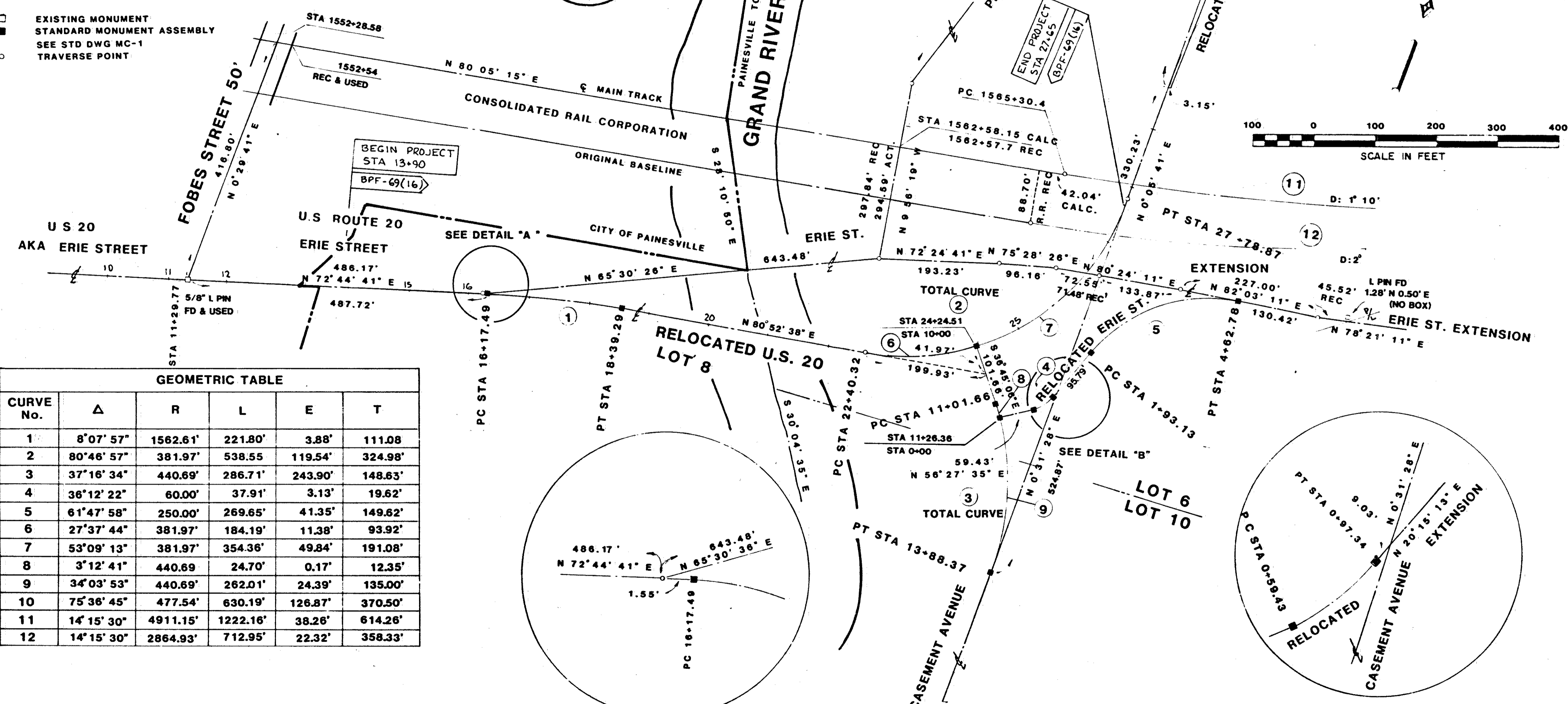


RECEIVED \_\_\_\_\_  
RECORDED \_\_\_\_\_  
PLAT BOOK \_\_\_\_\_ PAGE \_\_\_\_\_  
SIGNED \_\_\_\_\_ COUNTY RECORDER  
FEE \_\_\_\_\_  
SIGNED \_\_\_\_\_ PE No \_\_\_\_\_  
DATE \_\_\_\_\_ DIVISION DEPUTY DIRECTOR  
DIV 12

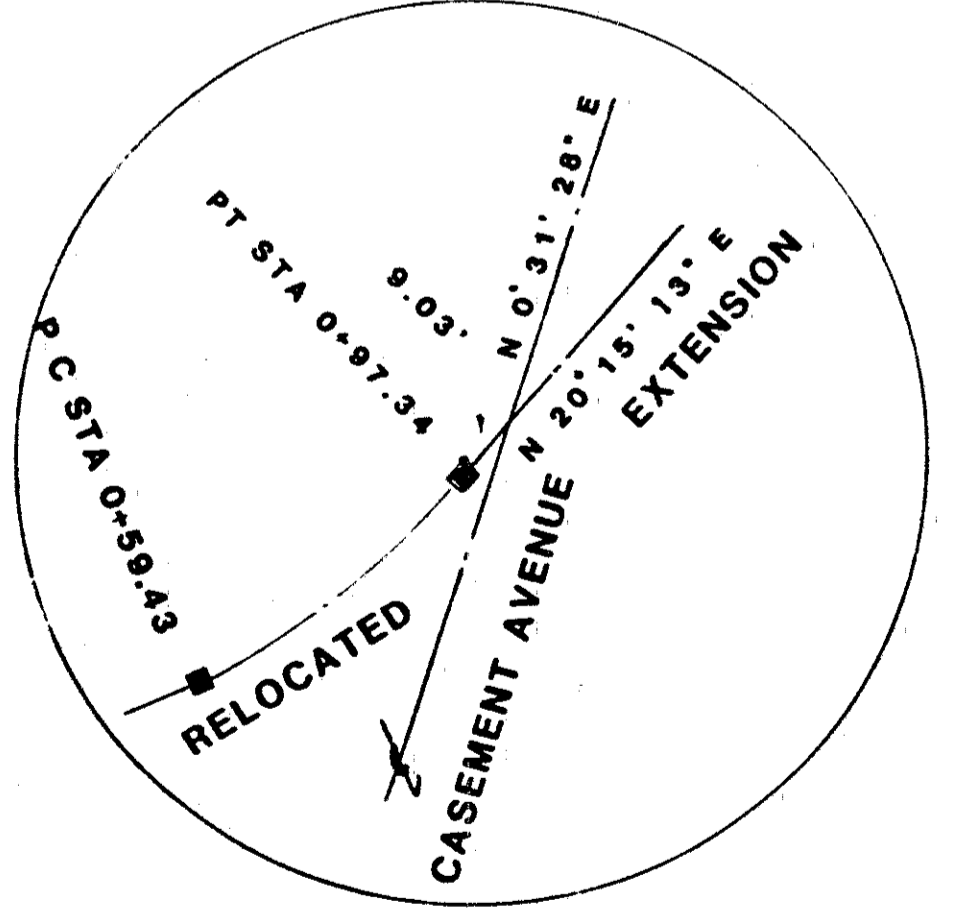
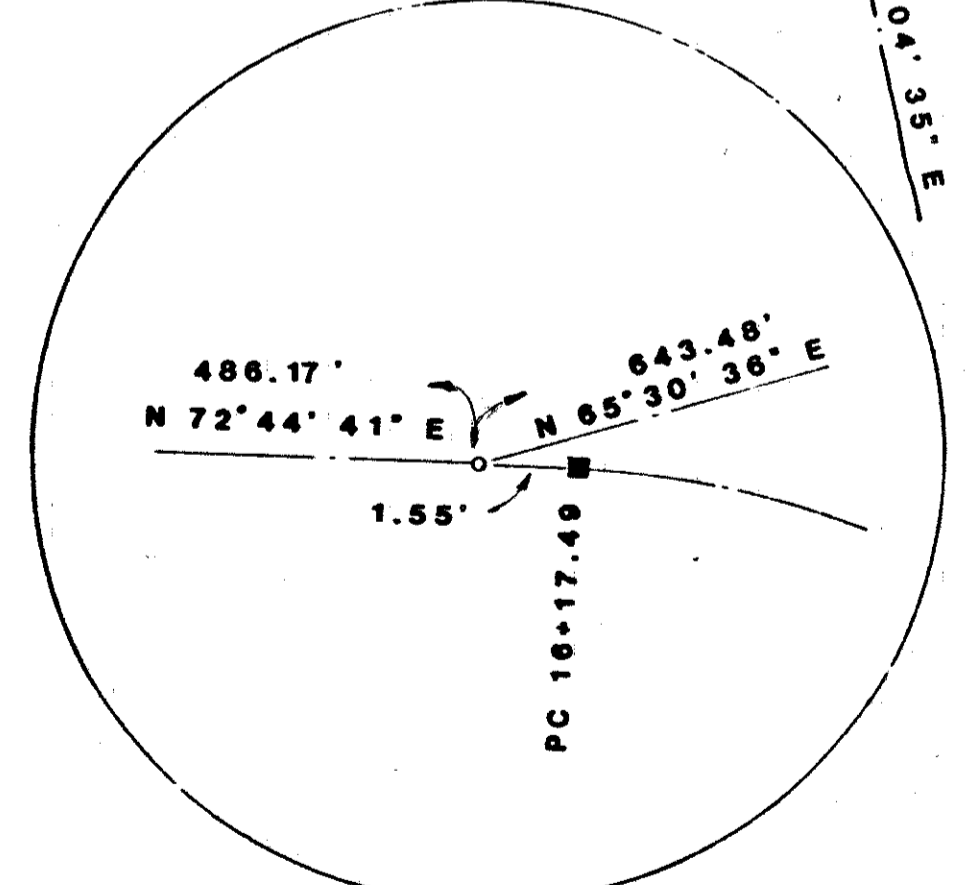
F.R.A. REGION	STATE	PROJECT
5	OHIO	

83  
86  
1  
4

- EXISTING MONUMENT
- STANDARD MONUMENT ASSEMBLY
- SEE STD DWG MC-1
- TRAVERSE POINT



GEOMETRIC TABLE					
CURVE No.	Δ	R	L	E	T
1	8°07'57"	1562.61'	221.80'	3.88'	111.08
2	80°46'57"	381.97'	538.55'	119.54'	324.98'
3	37°16'34"	440.69'	286.71'	243.90'	148.63'
4	36°12'22"	60.00'	37.91'	3.13'	19.62'
5	61°47'58"	250.00'	269.65'	41.35'	149.62'
6	27°37'44"	381.97'	184.19'	11.38'	93.92'
7	53°09'13"	381.97'	354.36'	49.84'	191.08'
8	3°12'41"	440.69'	24.70'	0.17'	12.35'
9	34°03'53"	440.69'	262.01'	24.39'	135.00'
10	75°36'45"	477.54'	630.19'	126.87'	370.50'
11	14°15'30"	4911.15'	1222.16'	38.26'	614.26'
12	14°15'30"	2864.93'	712.95'	22.32'	358.33'



SCALE 1"=100'  
MADE WJV DATE 5/16/85  
WOODRUFF, INC.  
CONSULTING ENGINEERS  
CLEVELAND OHIO

U S 20 OVER GRAND RIVER