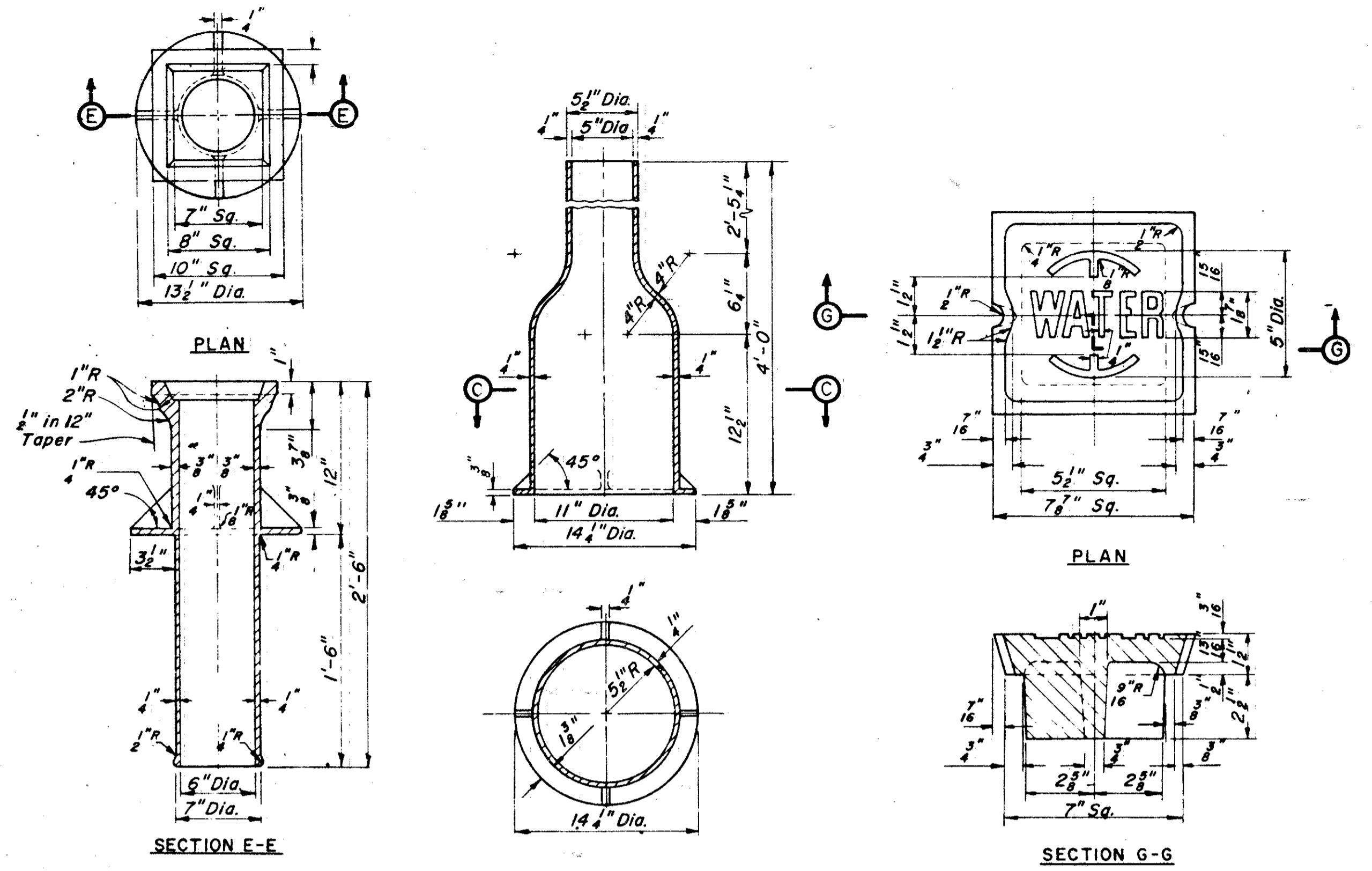


F.R.S.A. REGION	STATE	PROJECT
5	OHIO	

LAKE COUNTY  
LAK-20-17.14

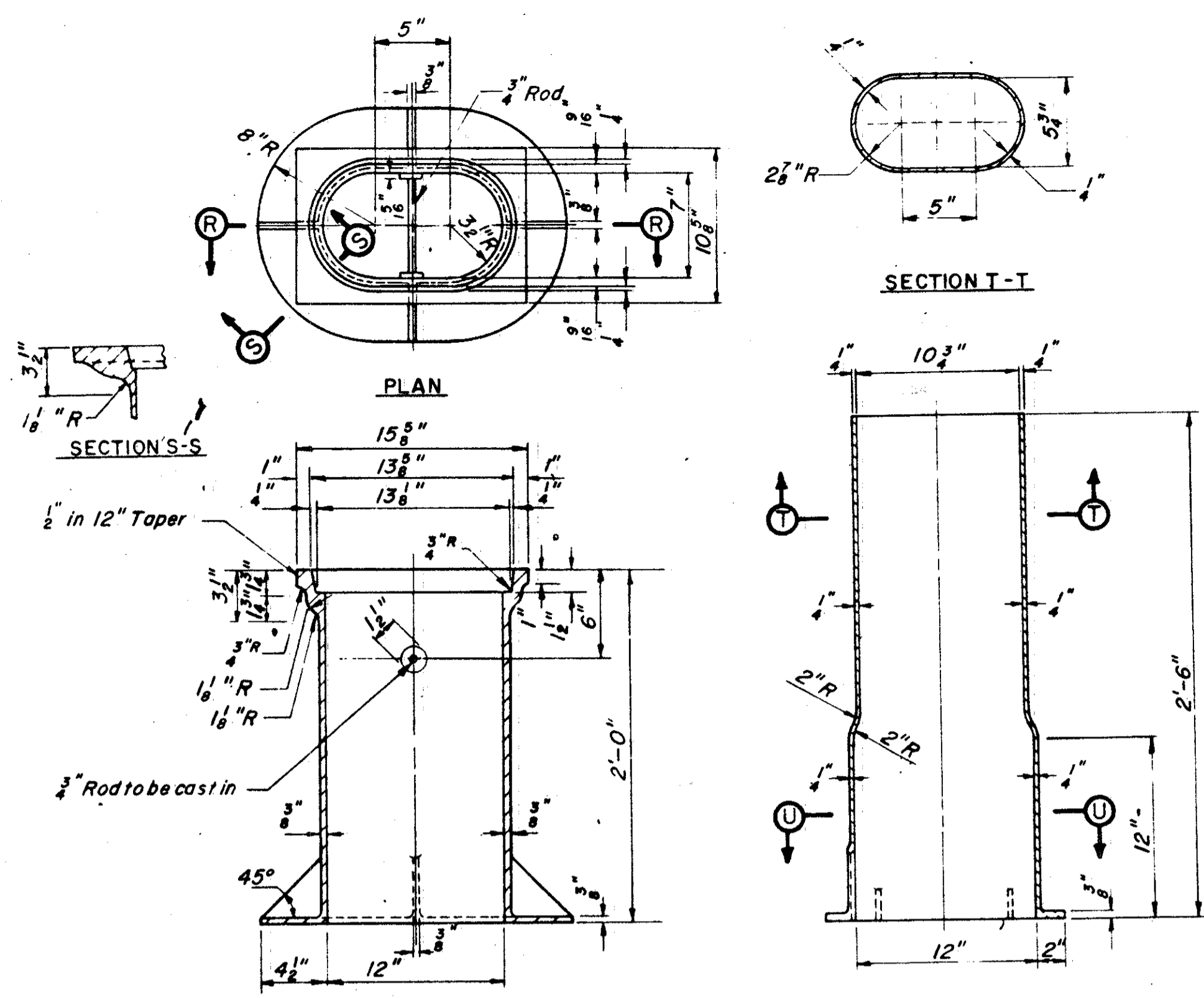


**TOP WITH SQUARE HEAD No. 4**  
Estimated Weight 85 lbs.

**BASE No. 4**  
Estimated Weight 79 lbs.

**SQUARE COVER FOR No. 4 TOP**  
Estimated Weight 23 lbs.

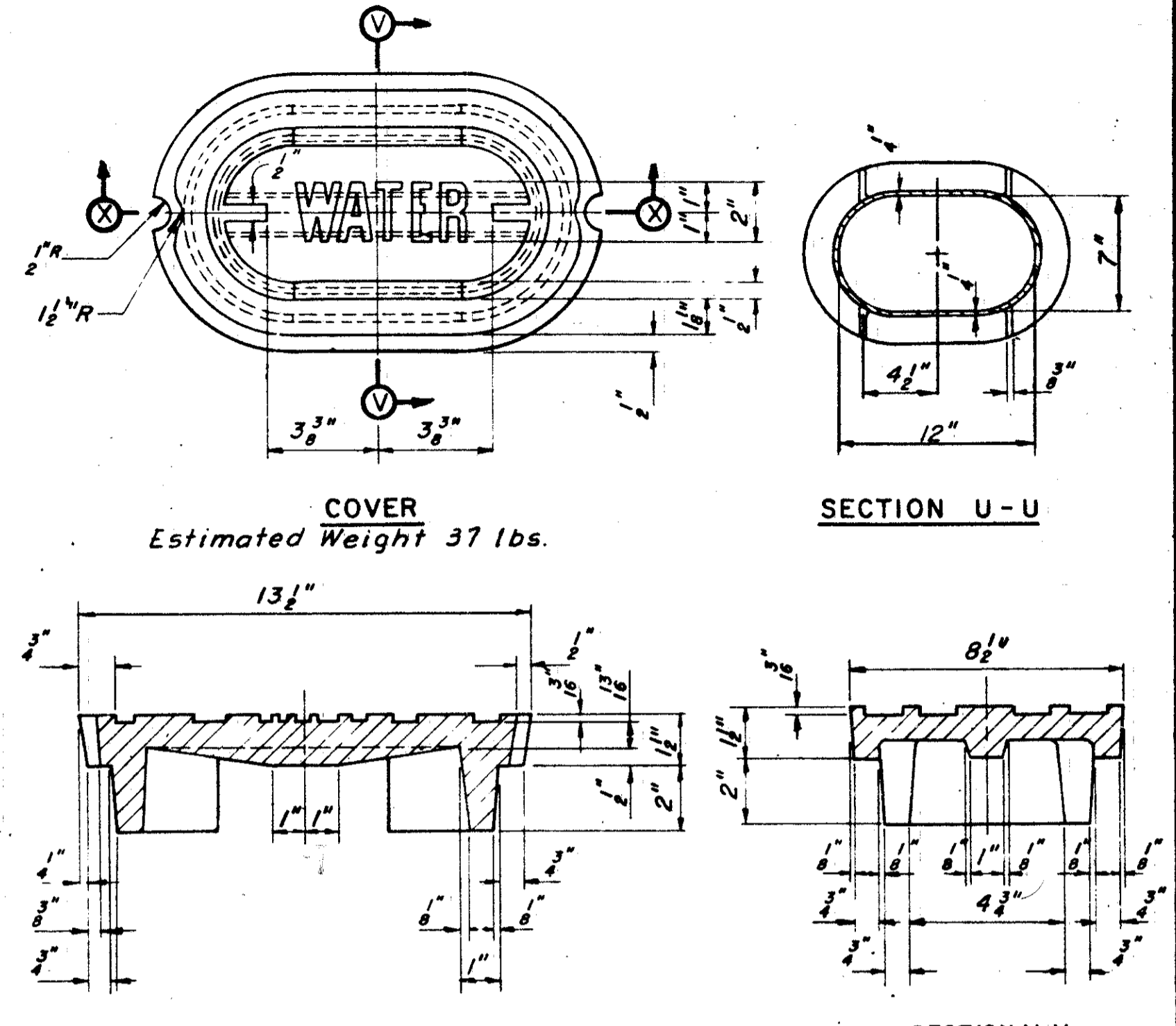
**STANDARD DETAILS - VALVE BOX No. 4**



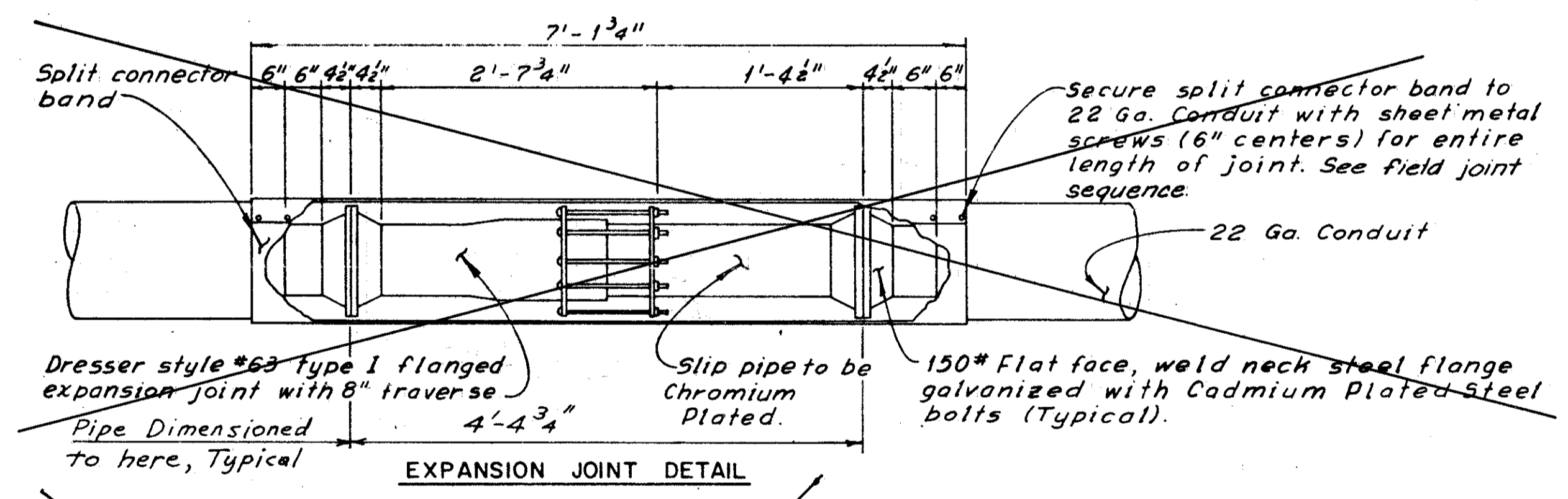
**TOP**  
Estimated Weight 120 lbs.

**BASE**  
Estimated Weight 70 lbs.

**STANDARD DETAILS - AIR COCK BOX No. 6**

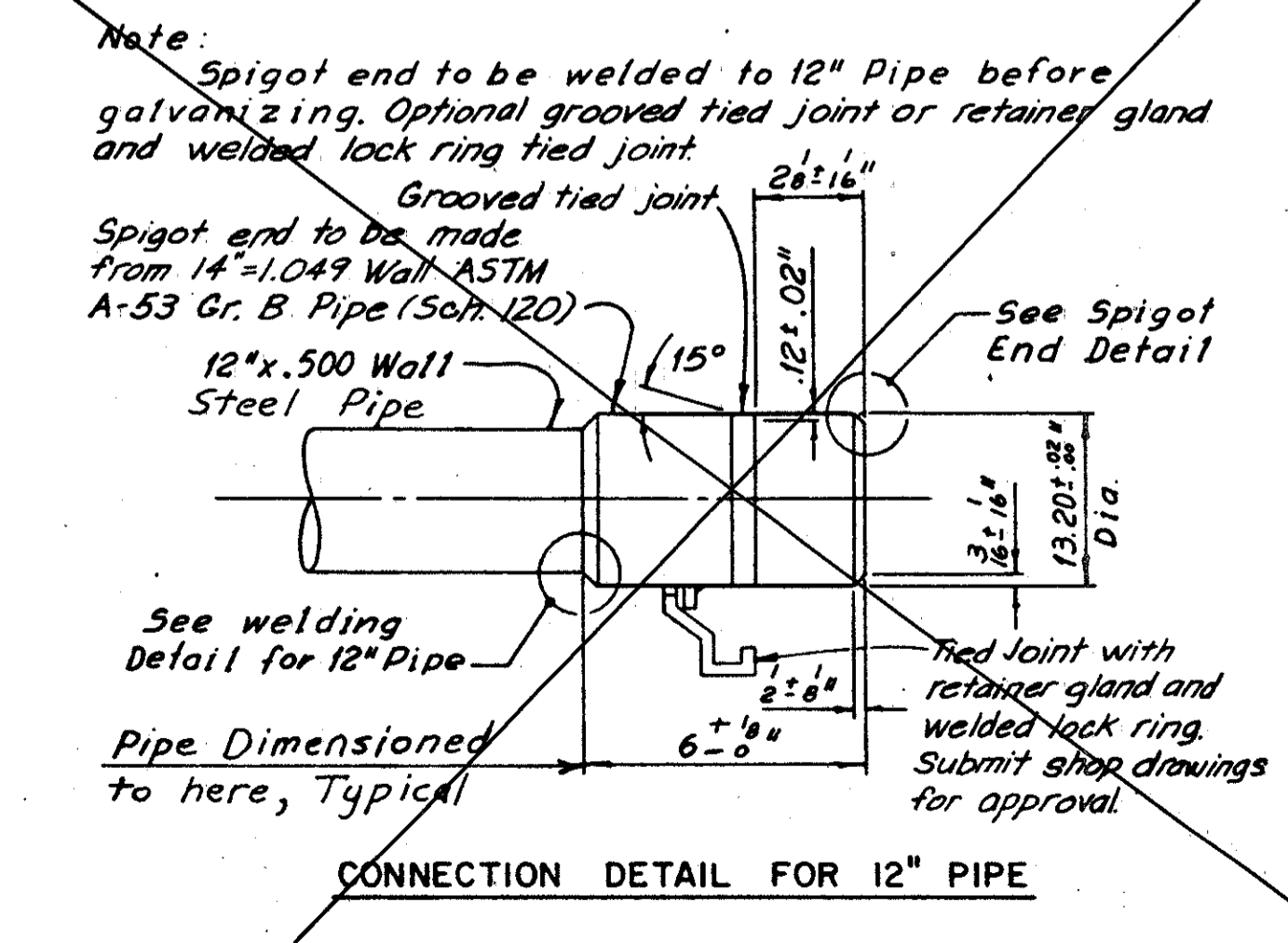


**COVER**  
Estimated Weight 37 lbs.



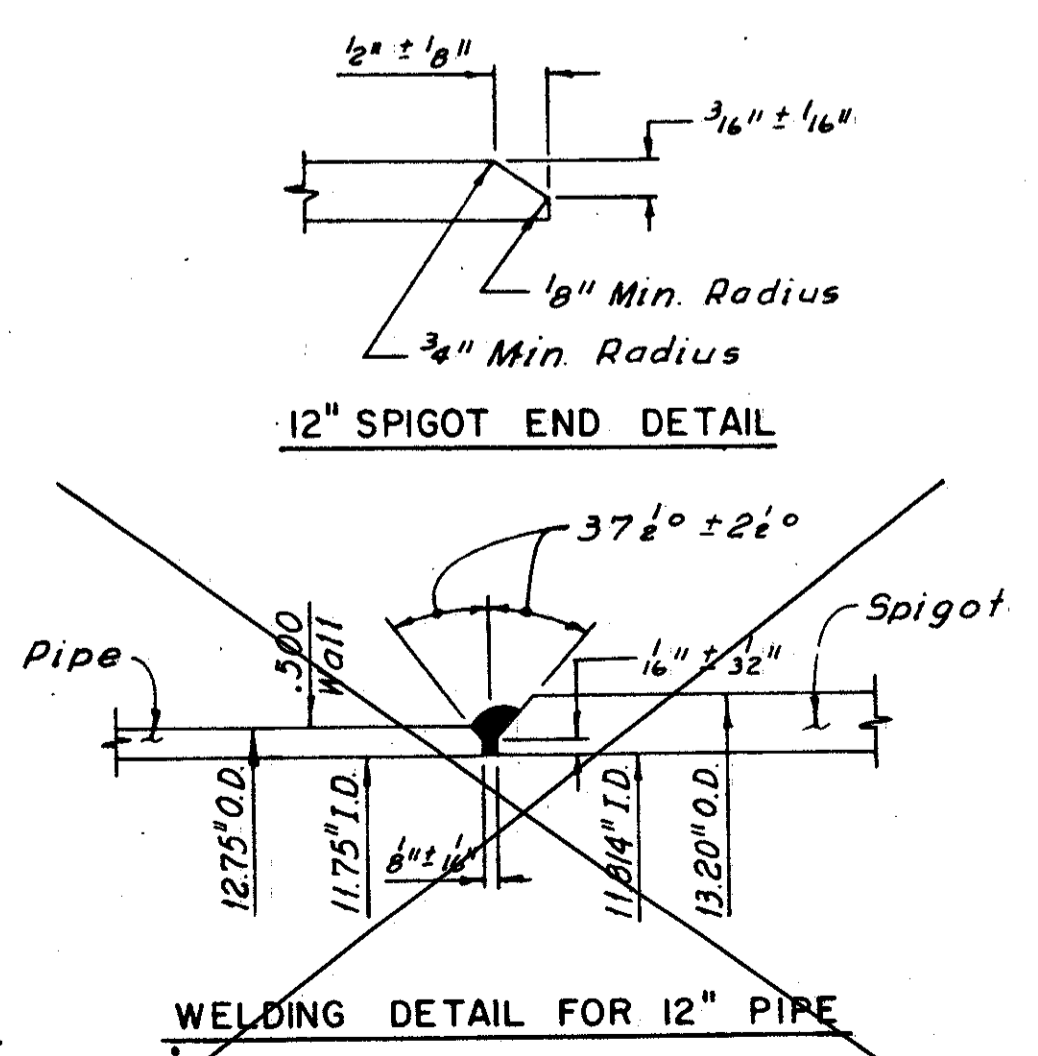
Secure split connector band to 22 Ga. Conduit with sheet metal screws (6" centers) for entire length of joint. See field joint sequence.

**EXPANSION JOINT DETAIL**



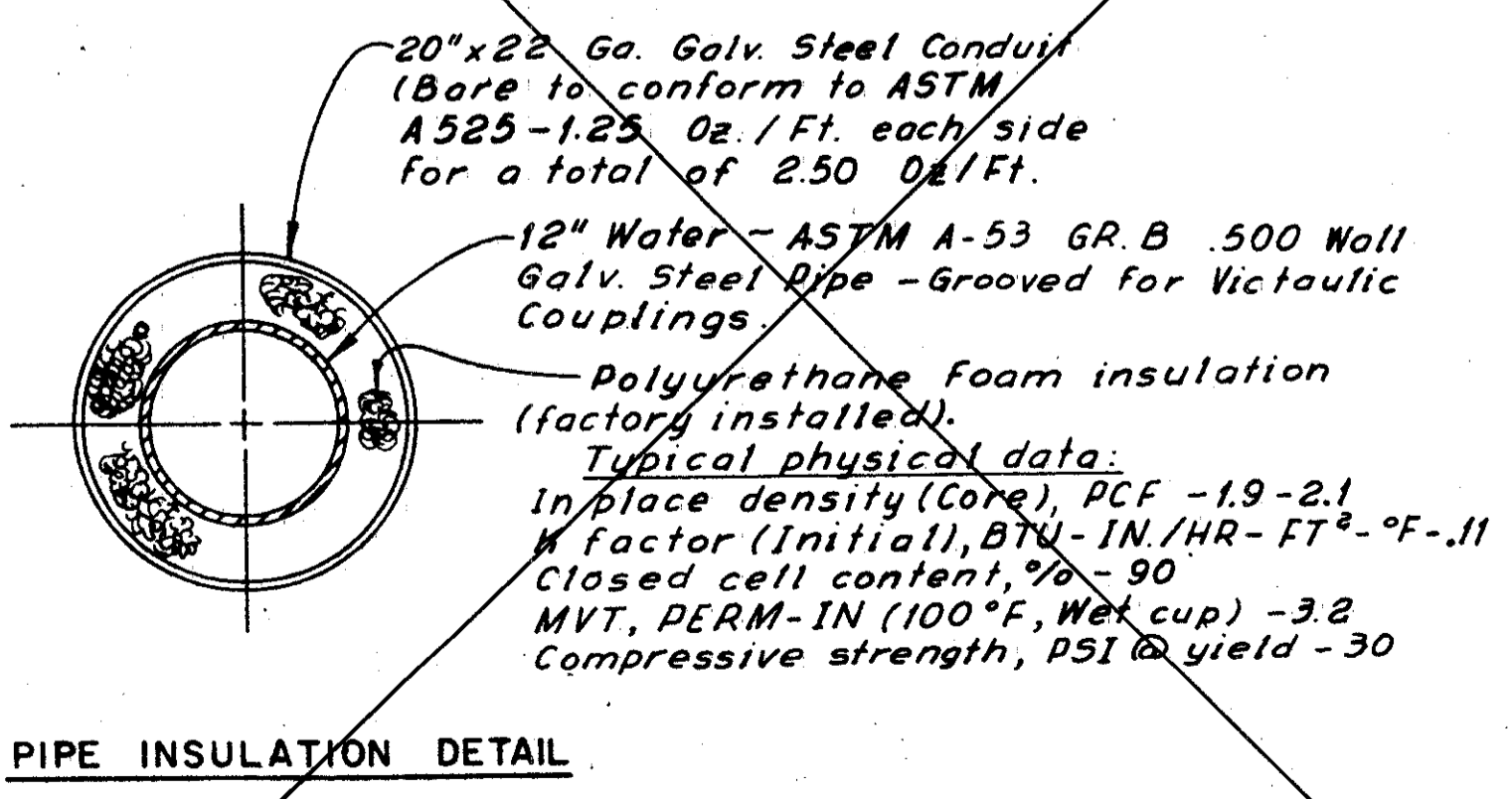
Note: Spigot end to be welded to 12" pipe before galvanizing. Optional grooved tied joint or retained gland and welded lock ring tied joint.

**CONNECTION DETAIL FOR 12" PIPE**

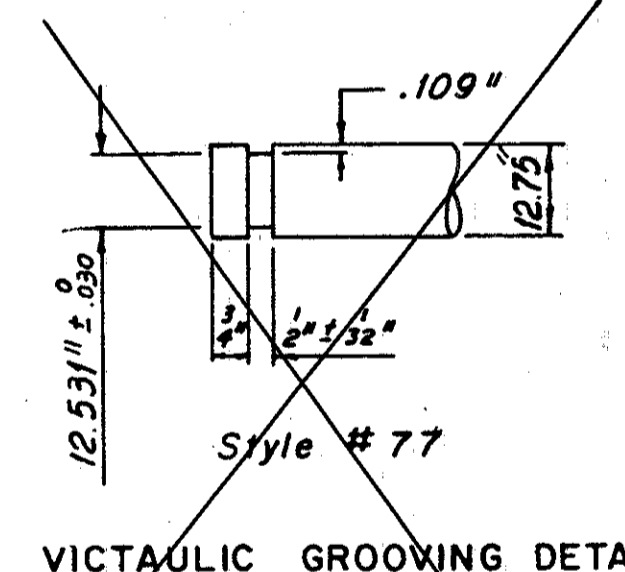


**12" SPIGOT END DETAIL**

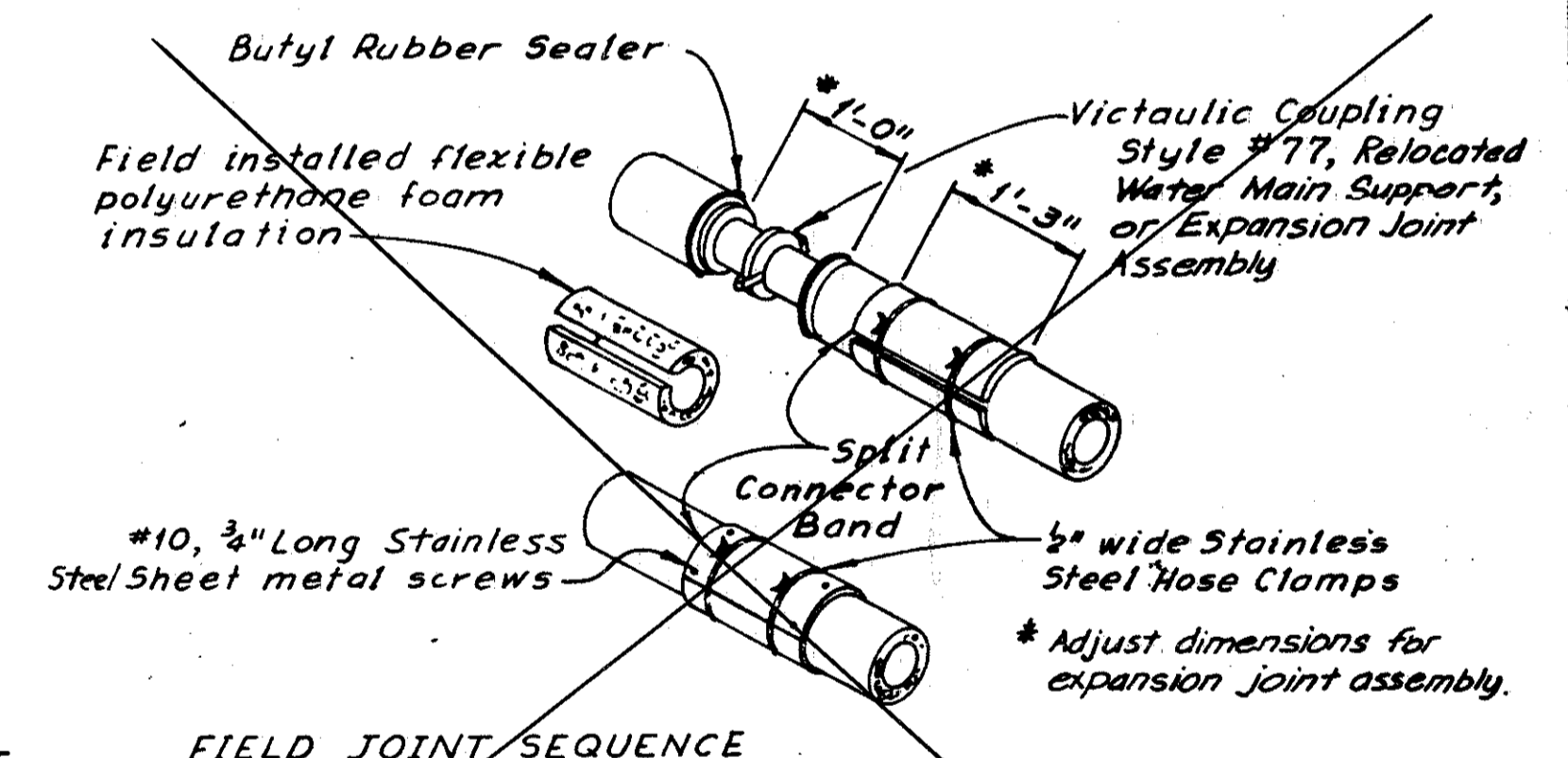
**WELDING DETAIL FOR 12" PIPE**



**PIPE INSULATION DETAIL**



**VICTAULIC GROOVING DETAIL FOR 12" PIPE**



**FIELD JOINT SEQUENCE**

- Slide split connector band on to unit. Make joint and test.
- Wrap Flexible Polyurethane foam around expose pipe and coupling and tape into place.
- Apply Butyl Rubber Sealer to both sides of joint.
- Center split connector band over joint and draw down tight with hose clamps. Secure Split Connector Band to jacket with sheet metal screws (4 screws per end).

**FIELD JOINT DETAILS**

SCALE AS SHOWN  
MADE PER DATE 9/65  
TRC/MAC DATE 9/65  
CRB/JM DATE 9/65

**WOODRUFF, INC.**  
CONSULTING ENGINEERS  
CLEVELAND OHIO

**MISCELLANEOUS DETAILS**  
No Scale