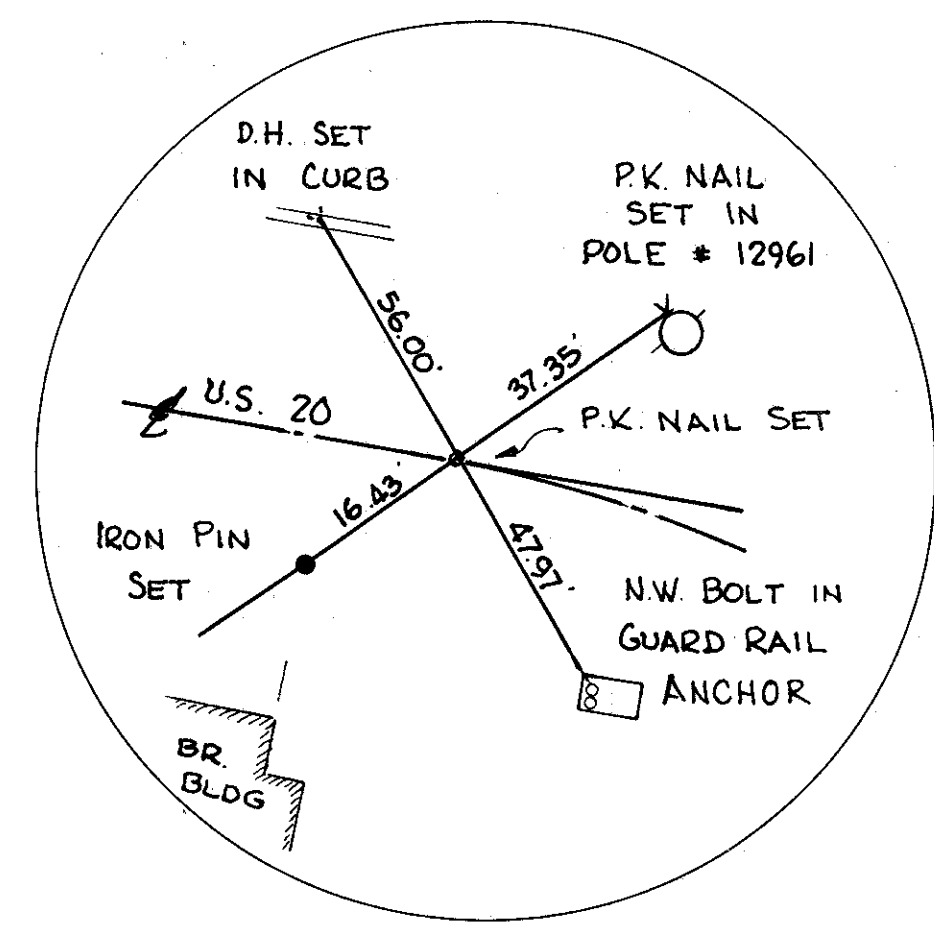
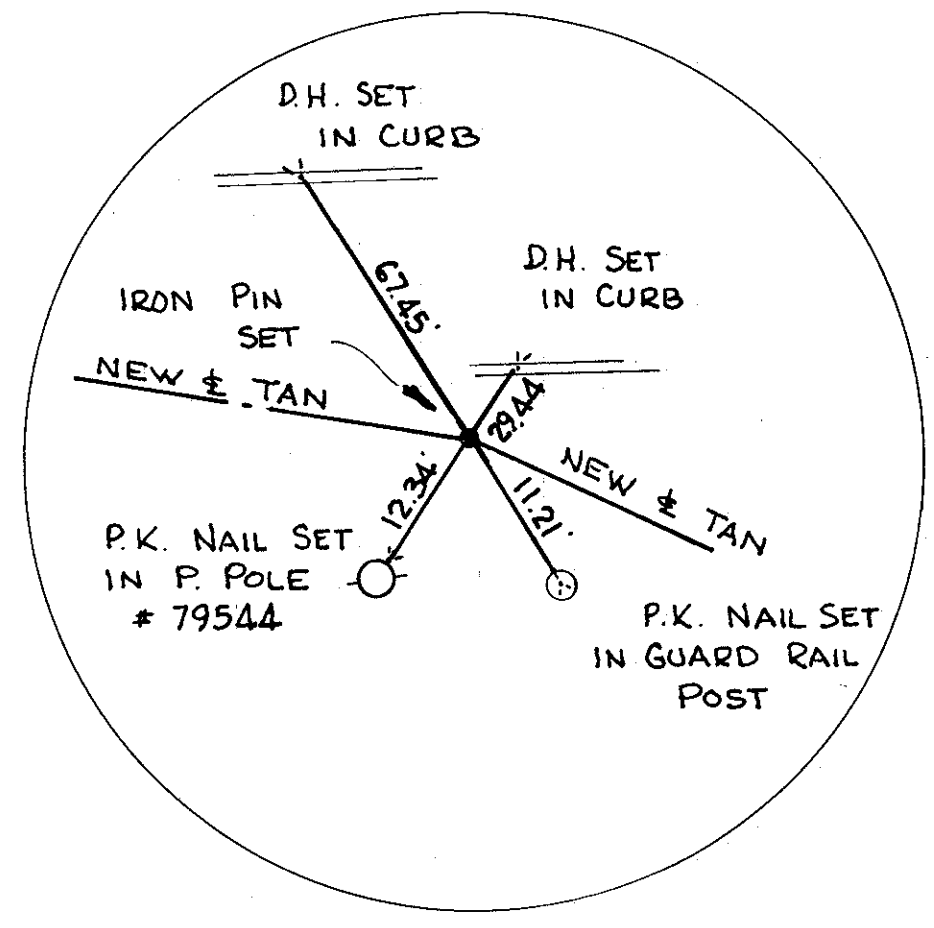


LAKE COUNTY
LAK-20-17.14

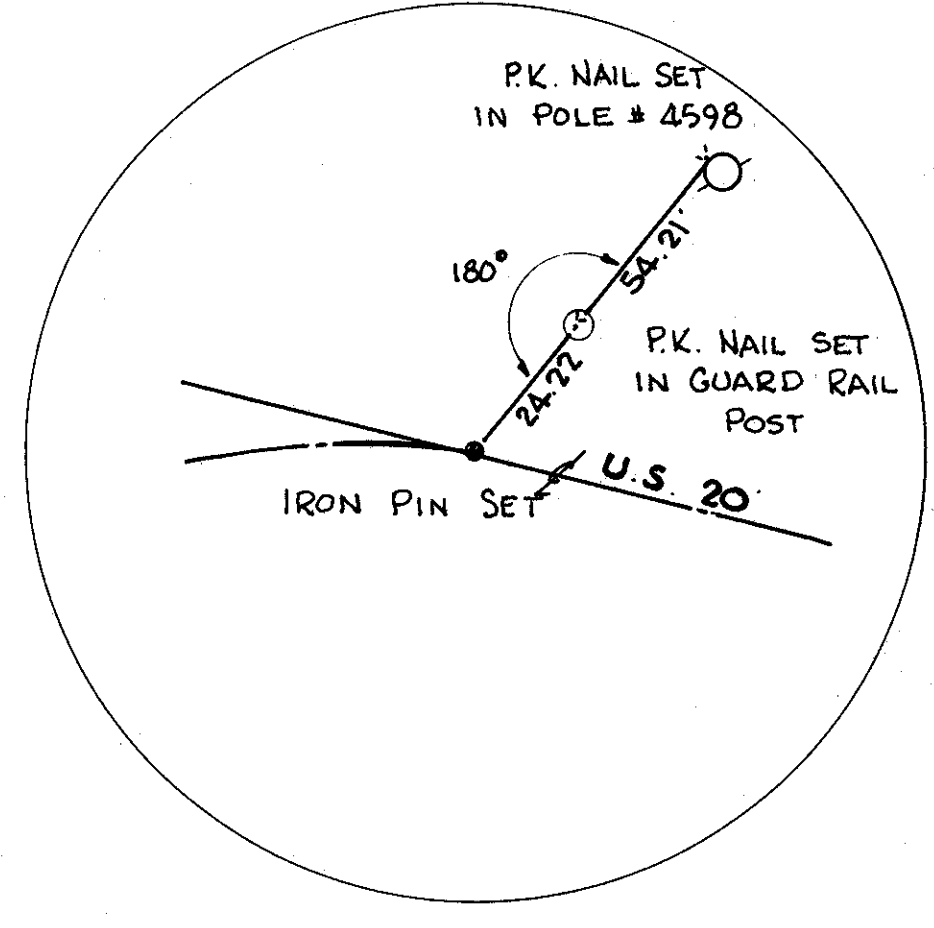
- LEGEND**
- D.H. Drill Hole
 - P.K. Parker Kalon Nail
 - I.P. Iron Pin
 - R.R. Rail Road Spike



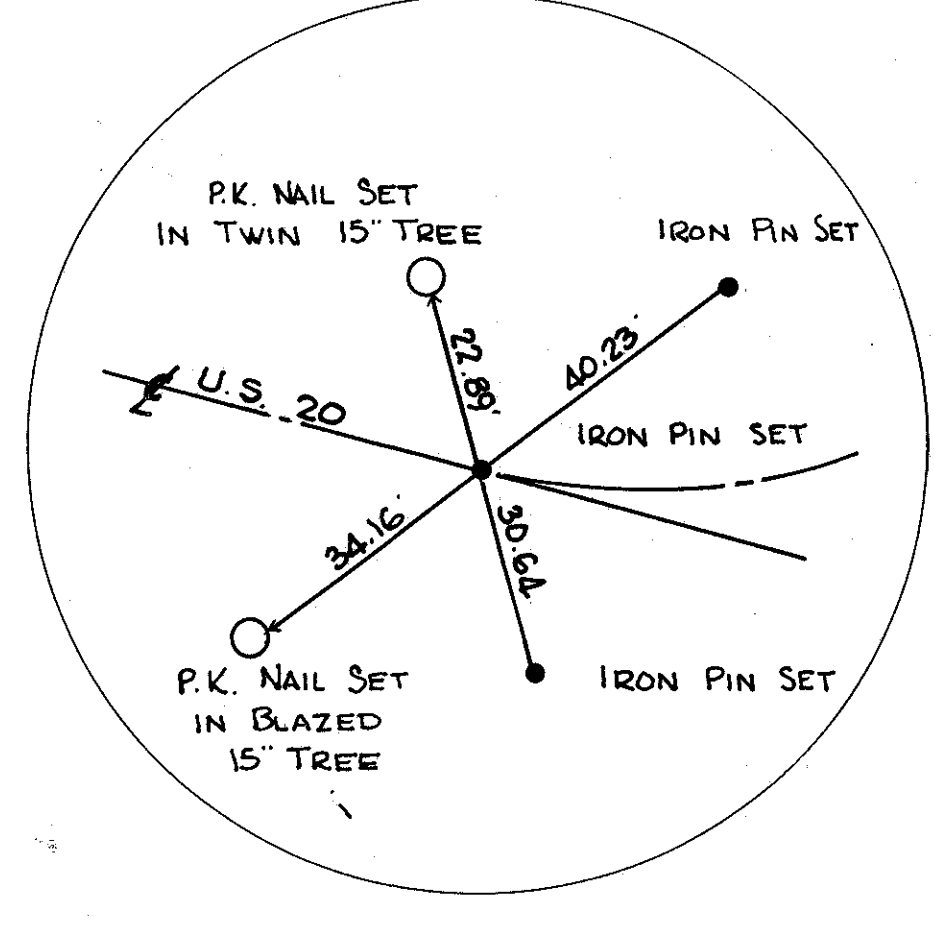
STA 16+17.49 PC
US 20



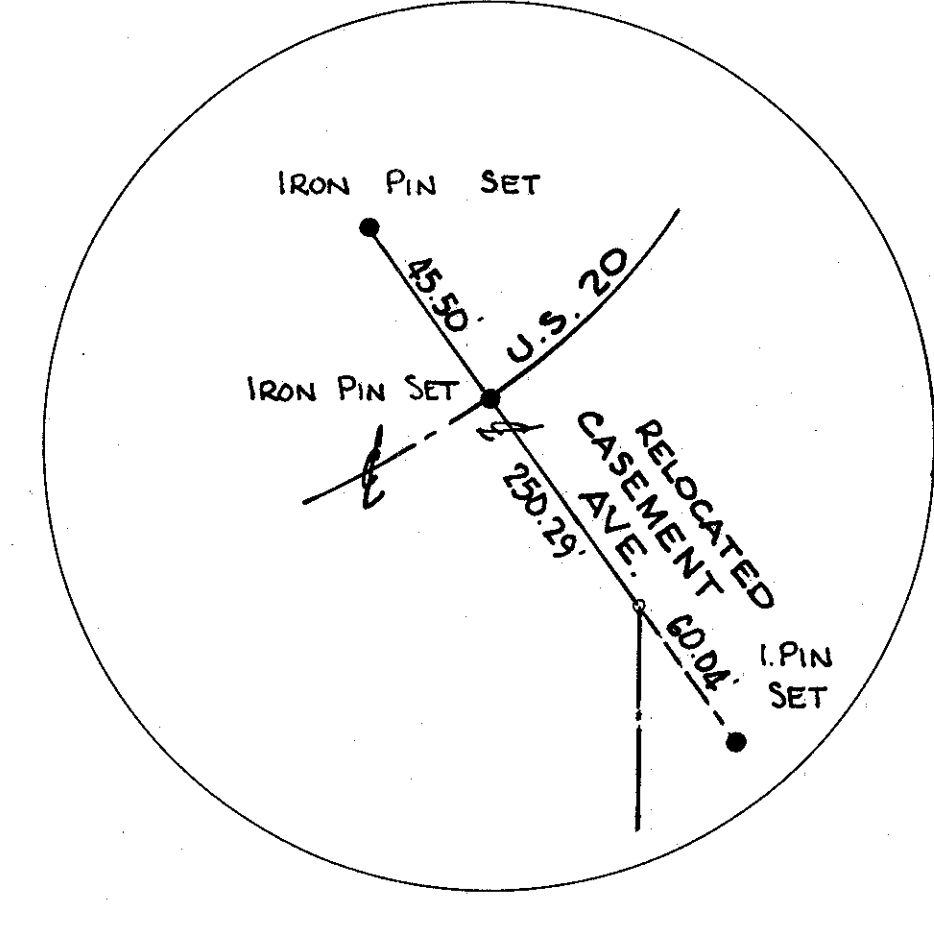
STA 17+28.57 PI
US 20



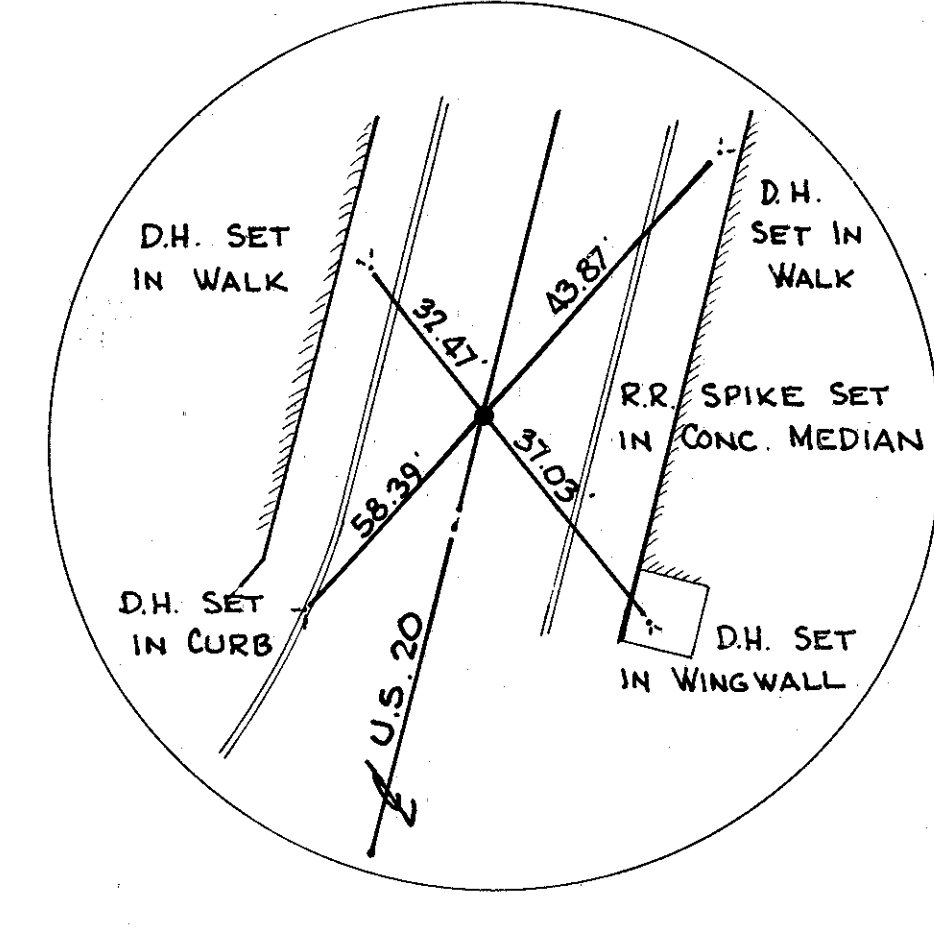
STA 18+39.29 PT
US 20



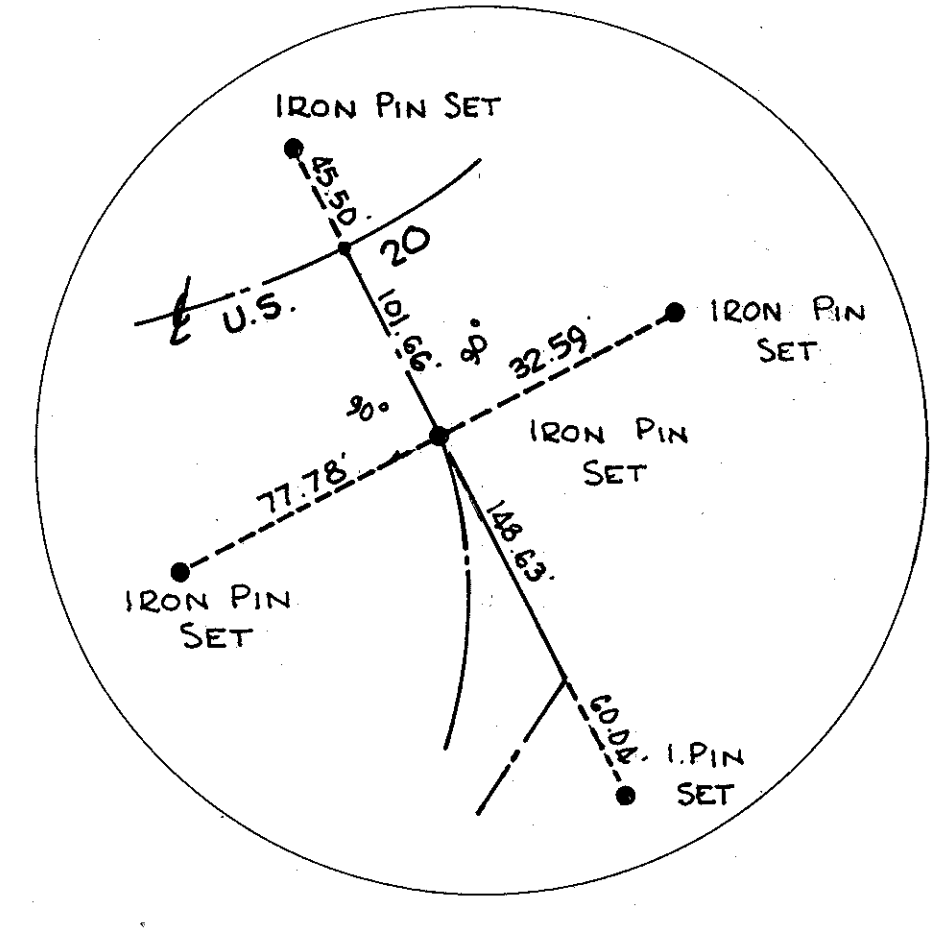
STA 22+40.32 PC
US 20



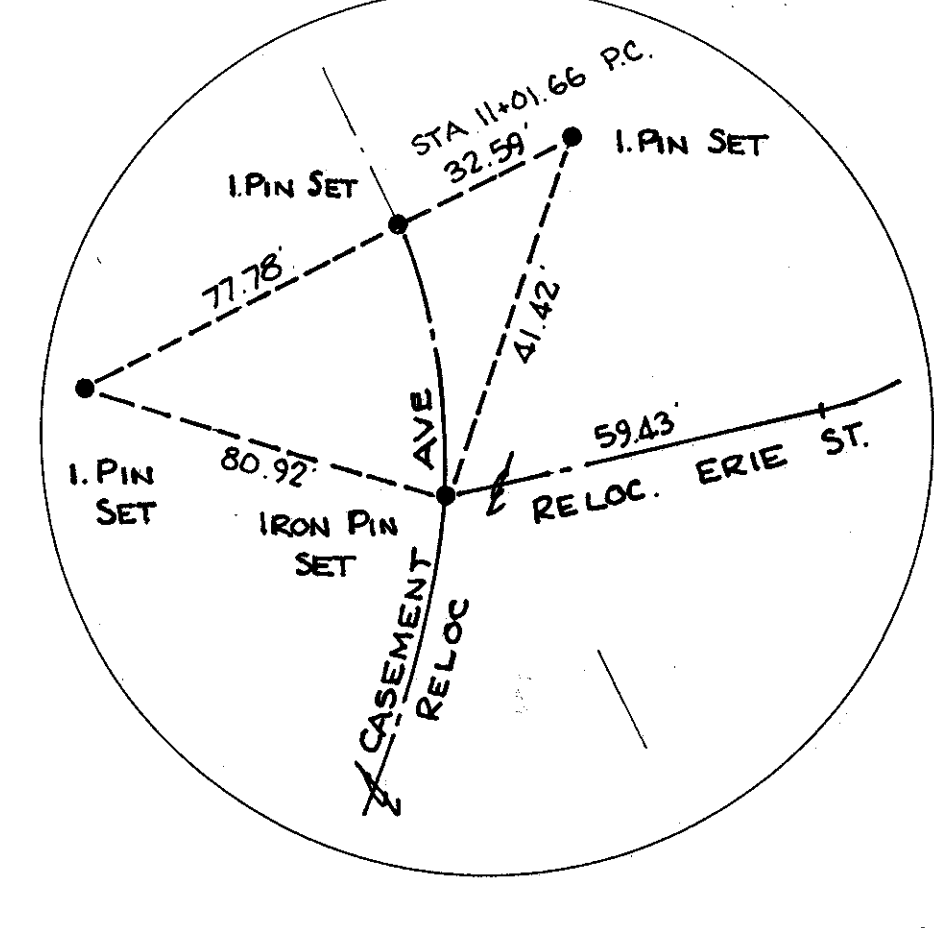
STA 24+24.51 US 20
STA 10+00.00 CASEMENT AVE



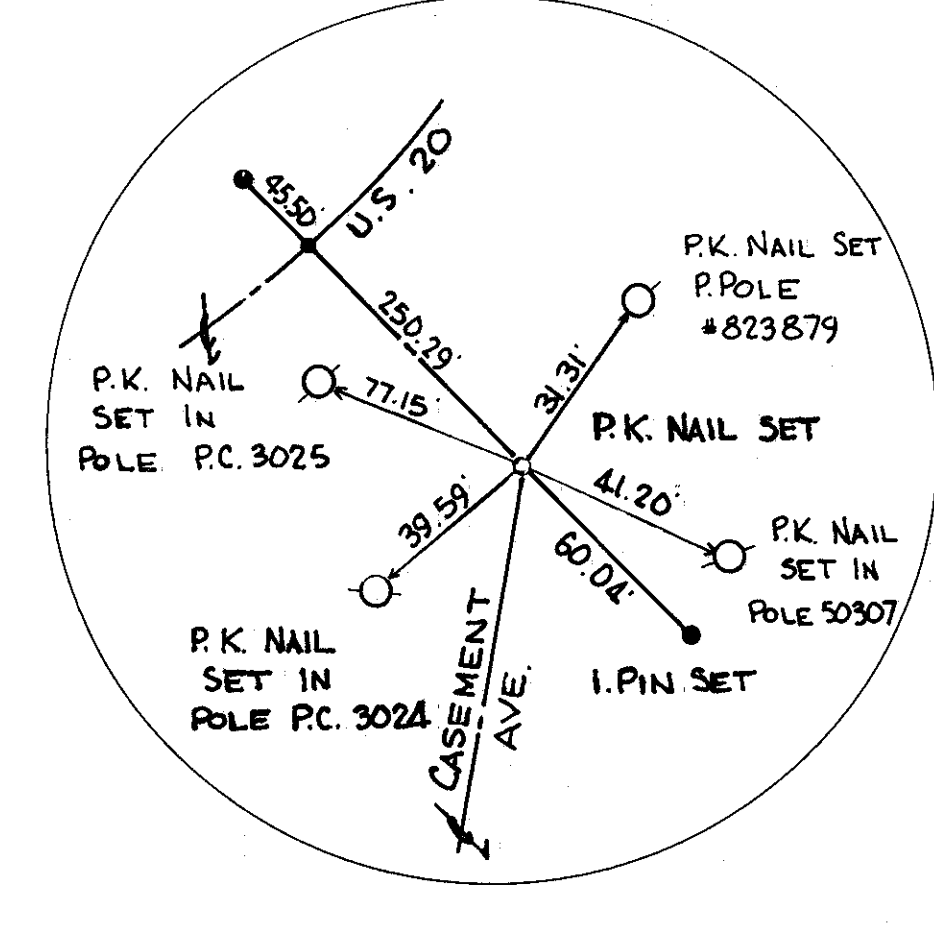
STA 27+78.87 PT
US 20



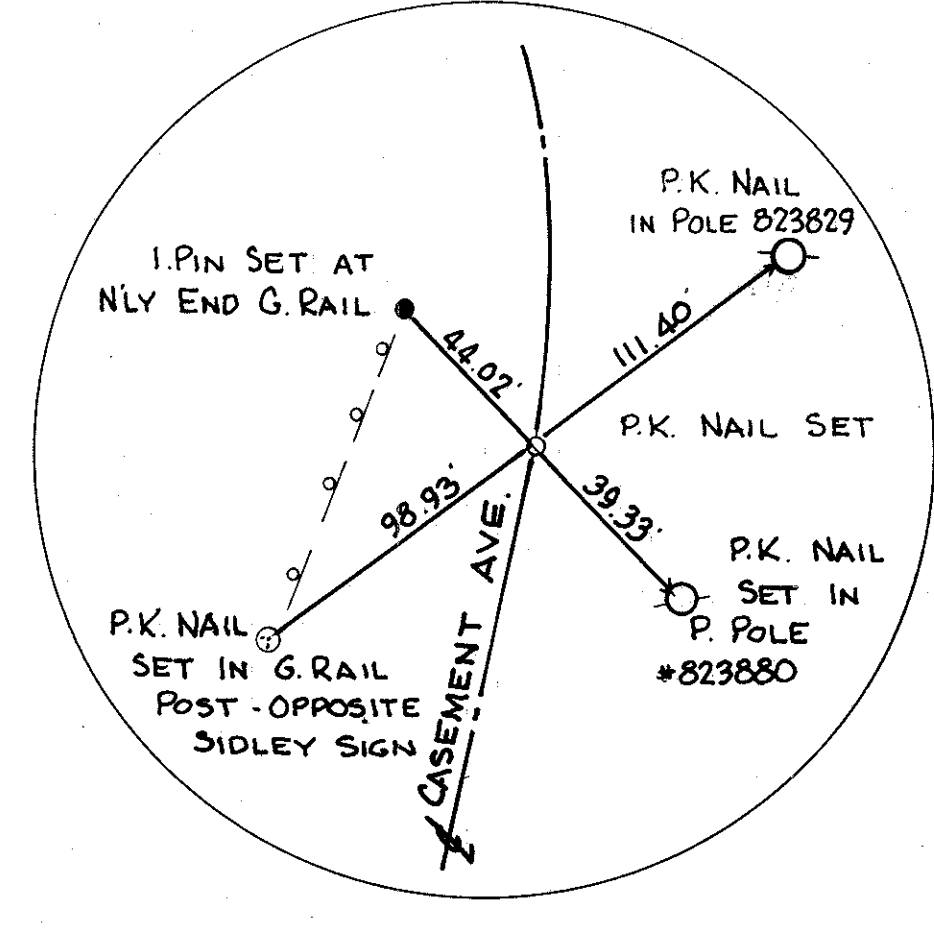
STA 11+01.66 PC
CASEMENT AVE RELOC.



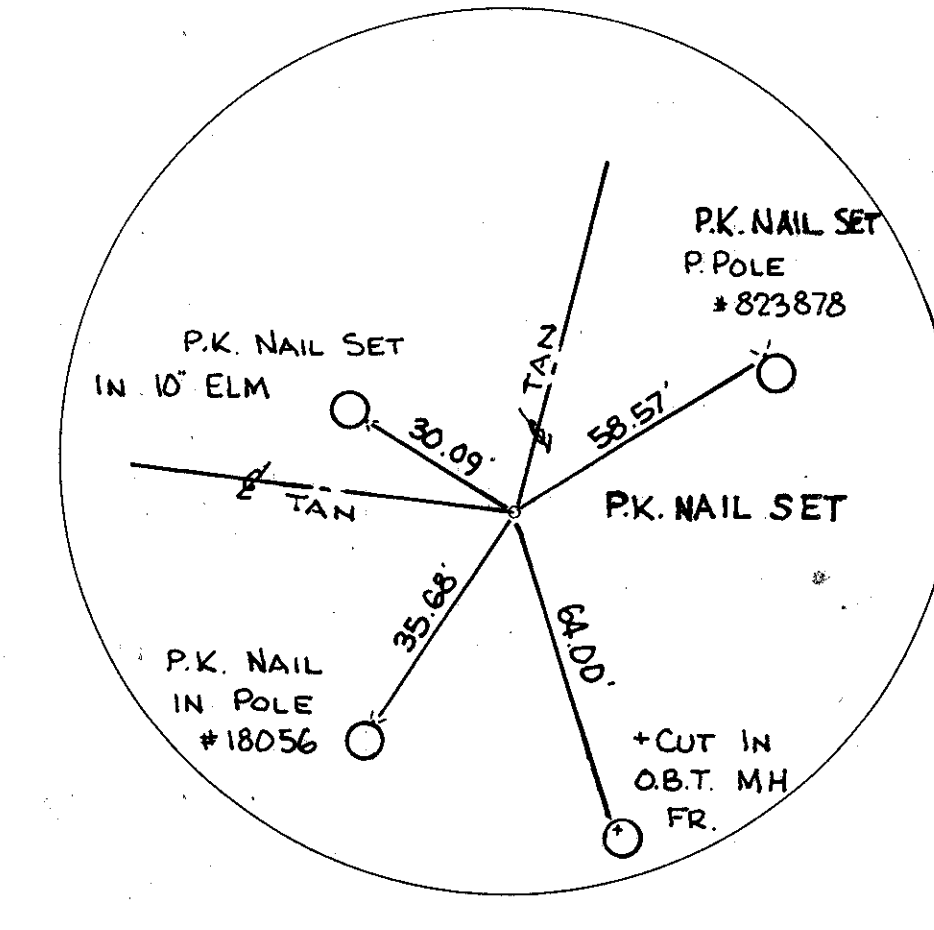
STA 11+26.36 CASEMENT AVE RELOC
STA 0+00 RELOC. ERIE ST. EXTENSION



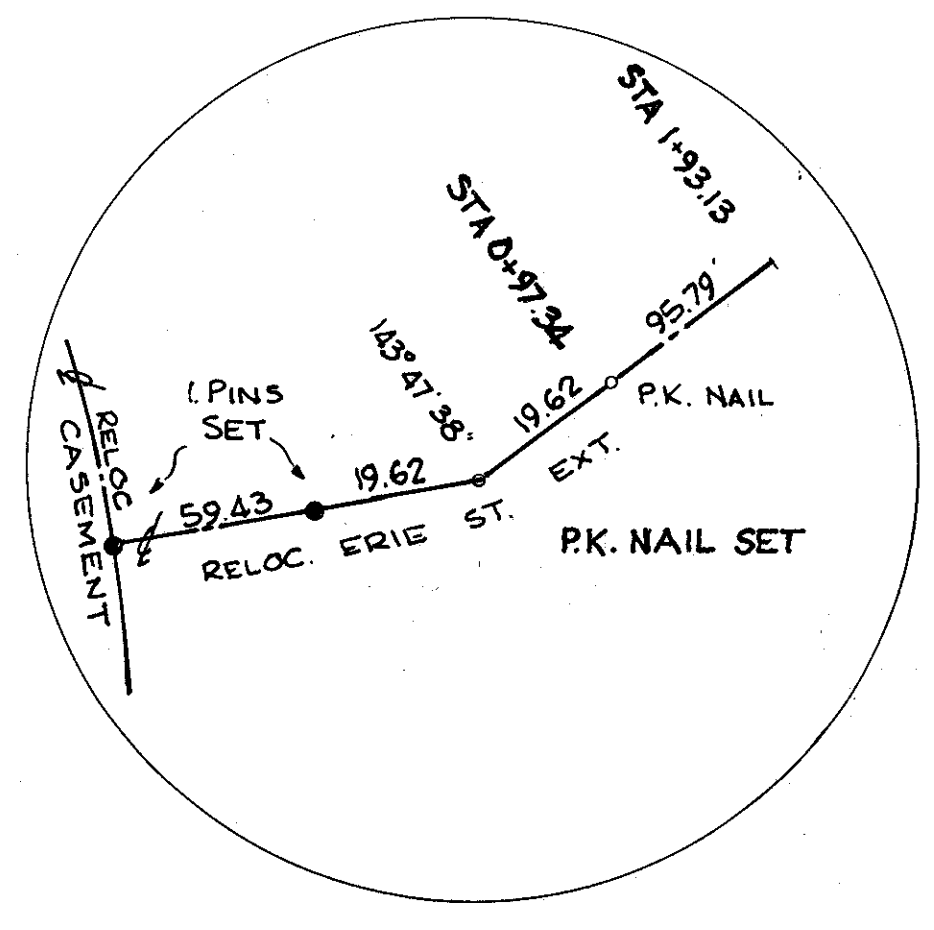
STA 12+50.29 P.I.
CASEMENT AVE RELOC.



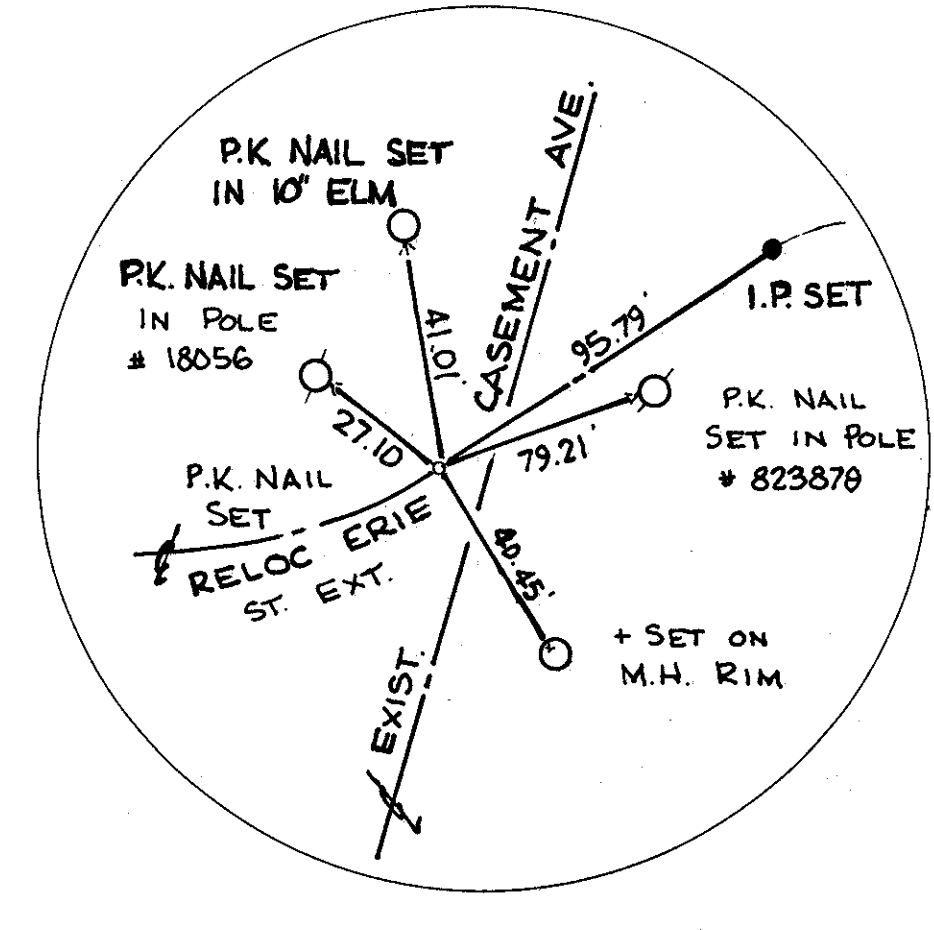
STA 13+88.37 PT
CASEMENT AVE. RELOC



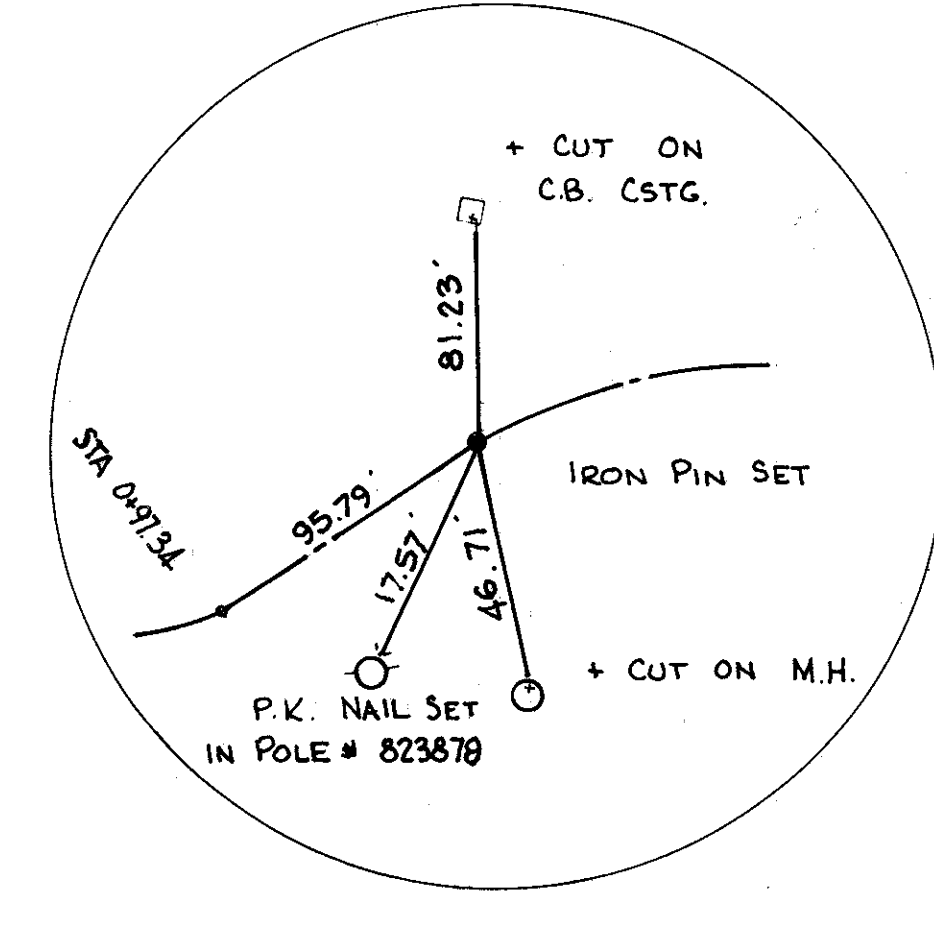
STA 25+65.30 PI US 20



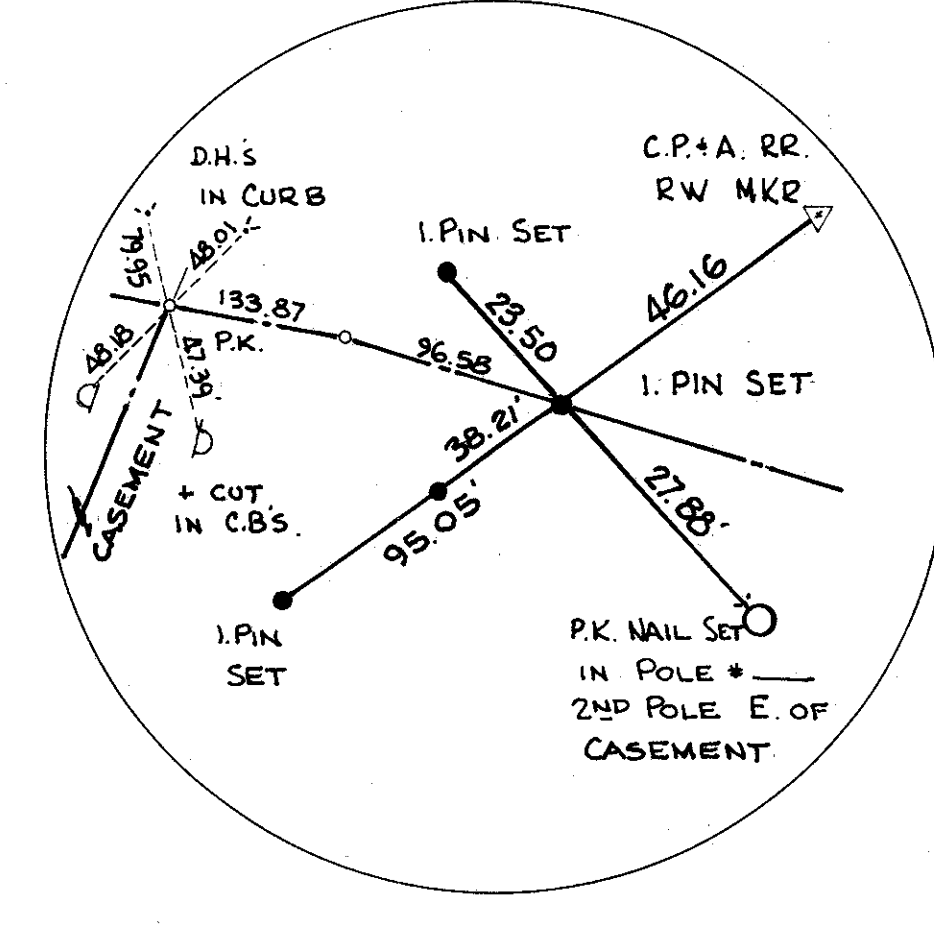
STA 0+59.43 PC
RELOC. ERIE ST. EXTENSION



STA 0+97.34 PC
RELOC. ERIE ST. EXTENSION



STA 1+93.13 PC
RELOC. ERIE ST. EXTENSION



STA 4+62.78 PT
RELOC. ERIE ST. EXTENSION

