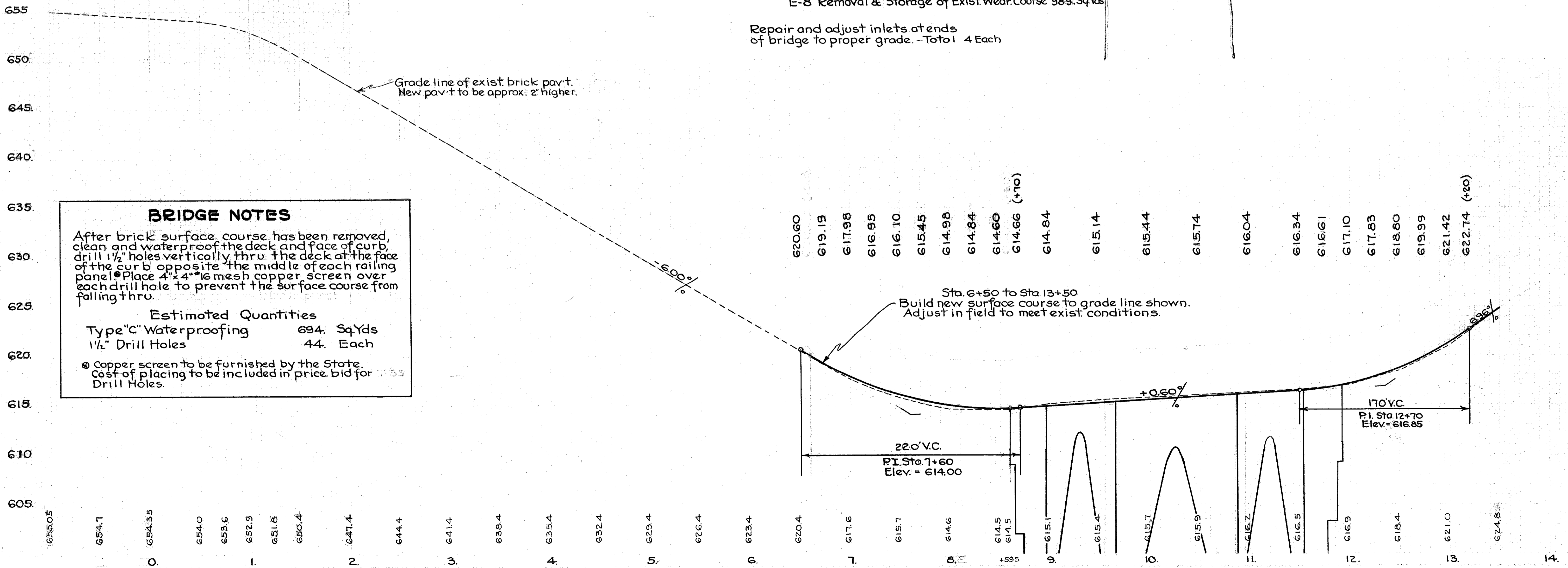
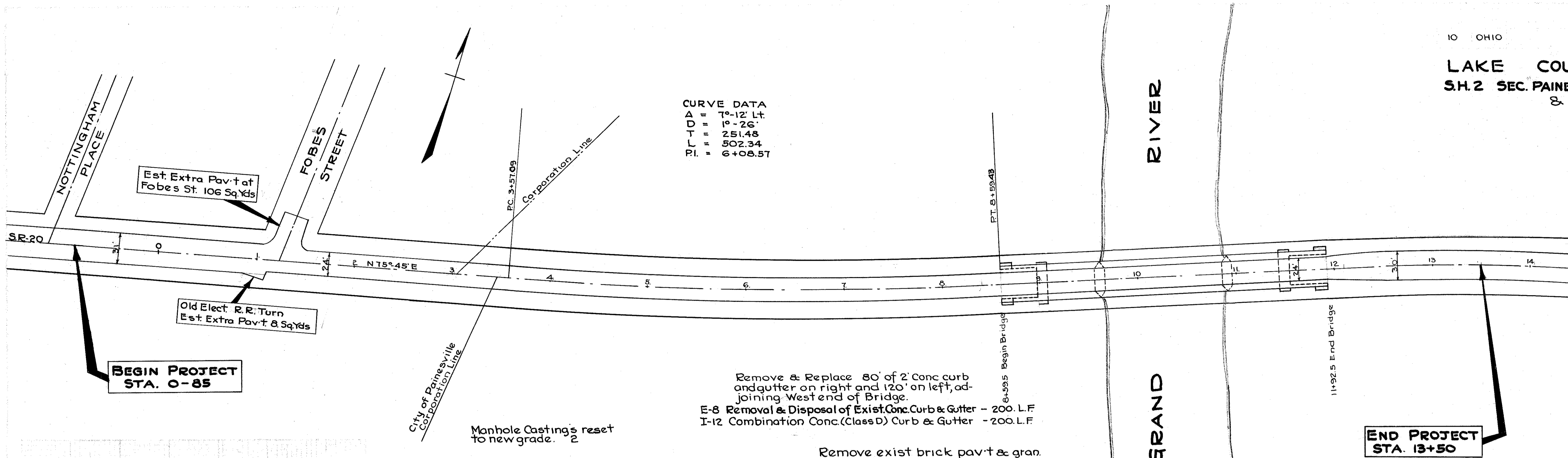


CURVE DATA
A = 7°-12' Lt
D = 1°-26'
L = 251.48
PI = 502.34
PI = 6+08.57



BRIDGE NOTES

After brick surface course has been removed, clean and waterproof the deck and face of curb, drill 1/2" holes vertically thru the deck at the face of the curb opposite the middle of each railing panel. Place 4"x4"x1/8" mesh copper screen over each drill hole to prevent the surface course from falling thru.

Estimated Quantities
Type "C" Waterproofing 694. Sq.Yds
1/2" Drill Holes 44. Each

Ⓢ Copper screen to be furnished by the State. Cost of placing to be included in price bid for Drill Holes.