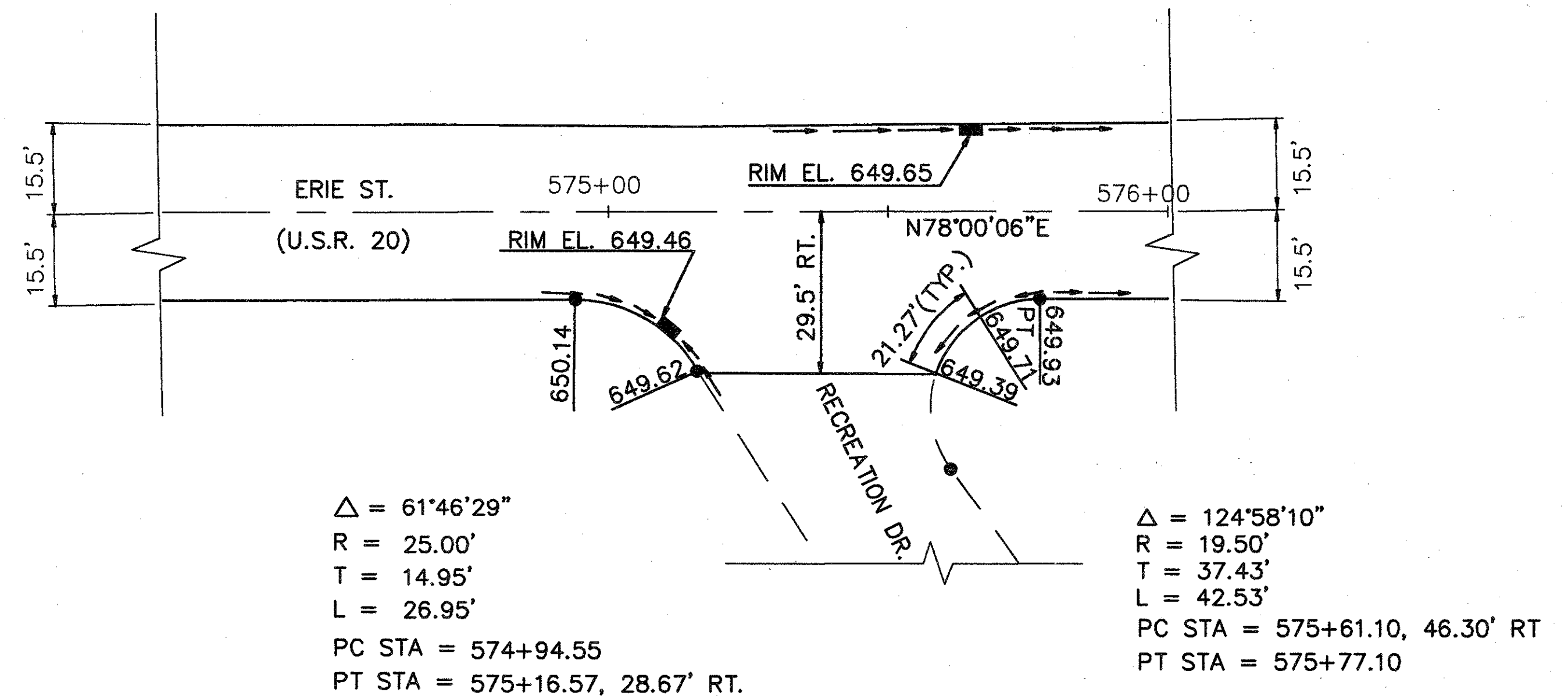
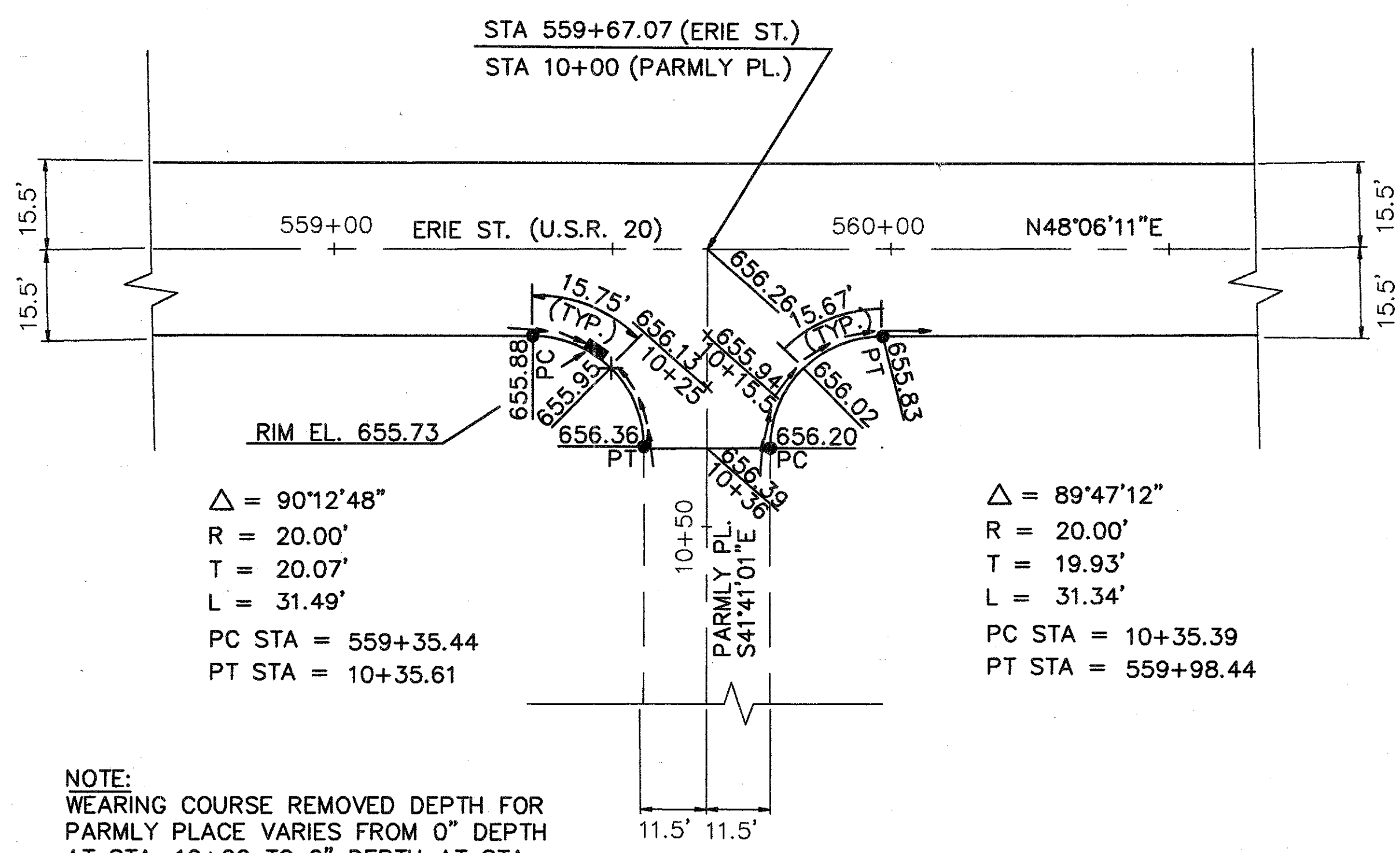
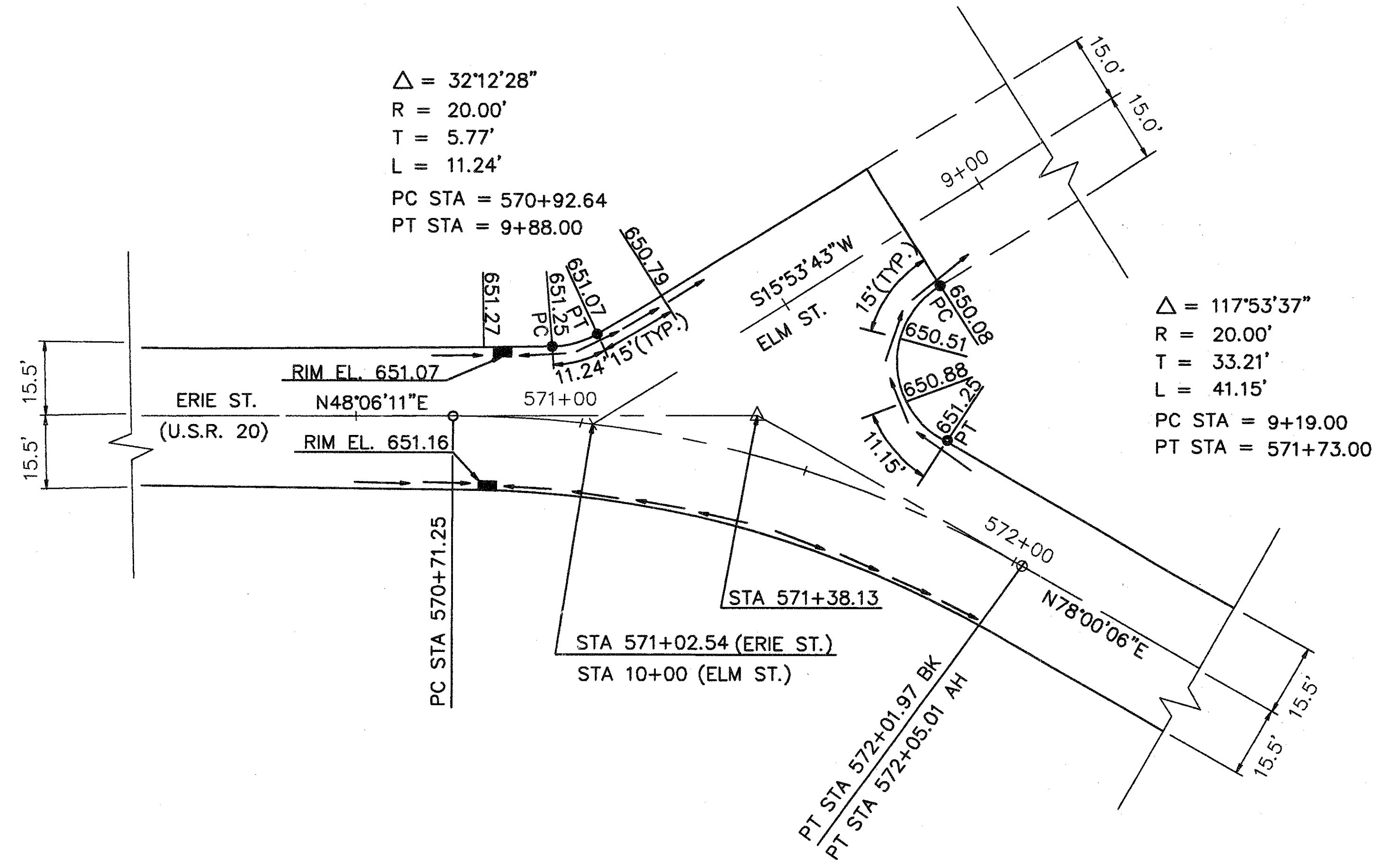
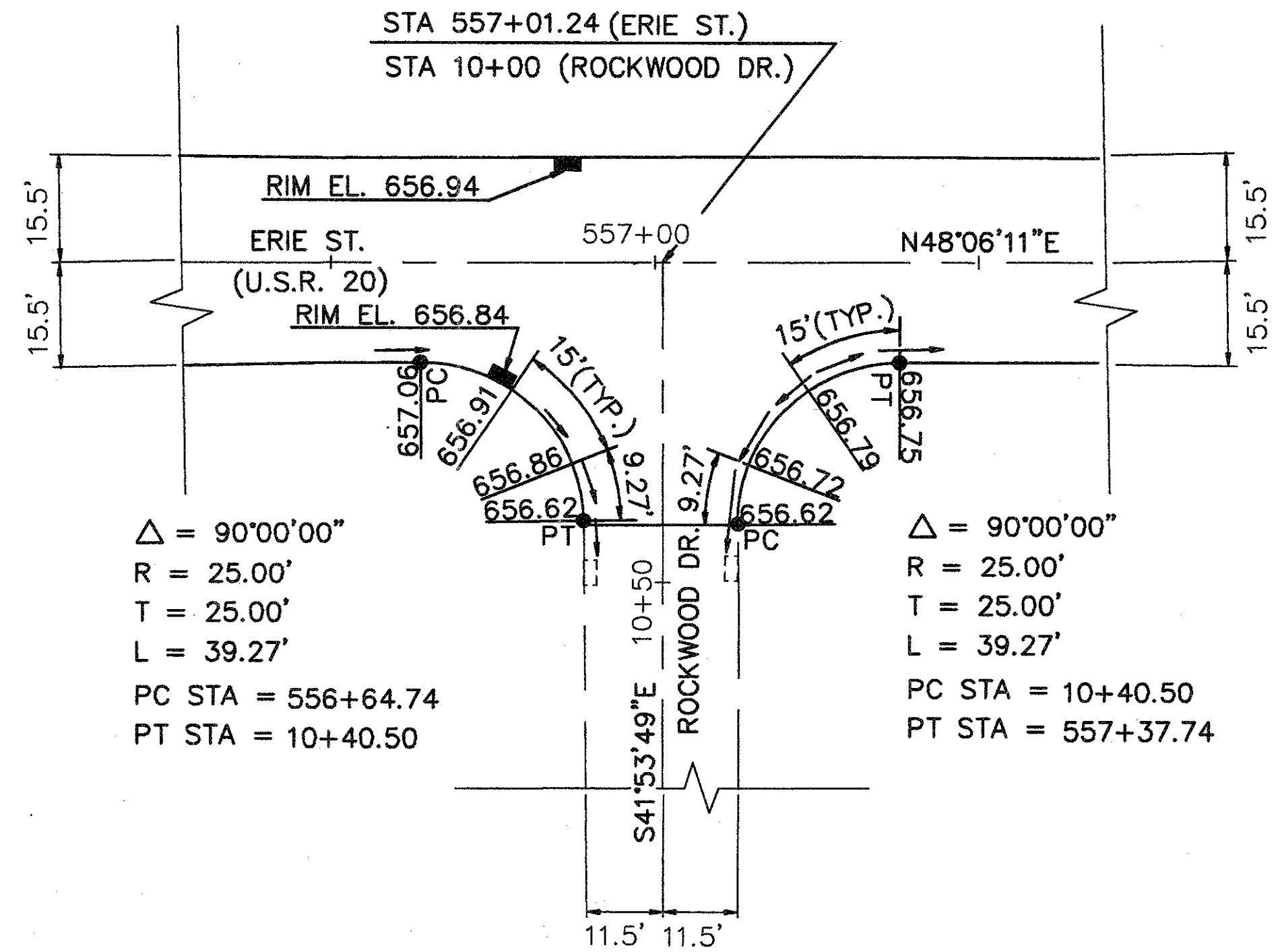


NOTE: ALL ELEVATIONS AND RADII ARE TO BOTTOM FACE OF CURB



NOTE:
WEARING COURSE REMOVED DEPTH FOR PARMLY PLACE VARIES FROM 0" DEPTH AT STA. 10+20 TO 2" DEPTH AT STA. 10+23.5. BUTT JOINT AS PER BP-3.1 FROM STA. 10+23.5 TO STA. 10+36.