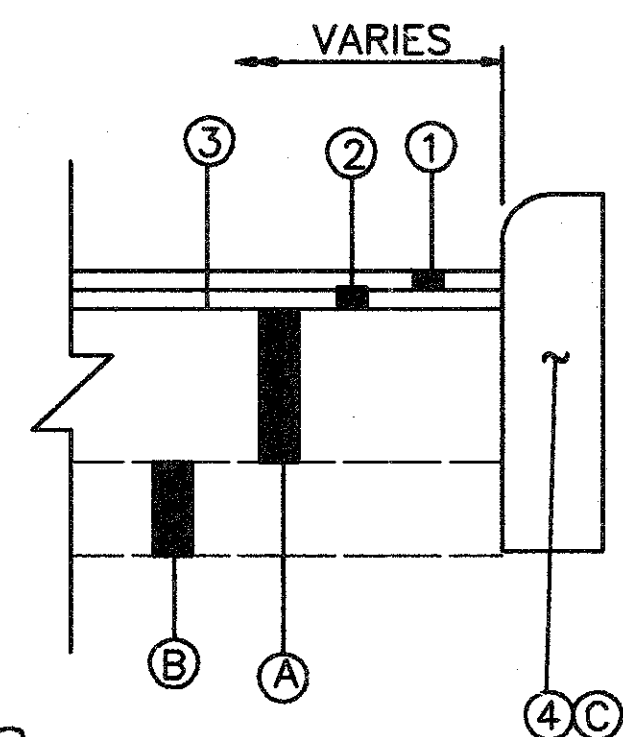
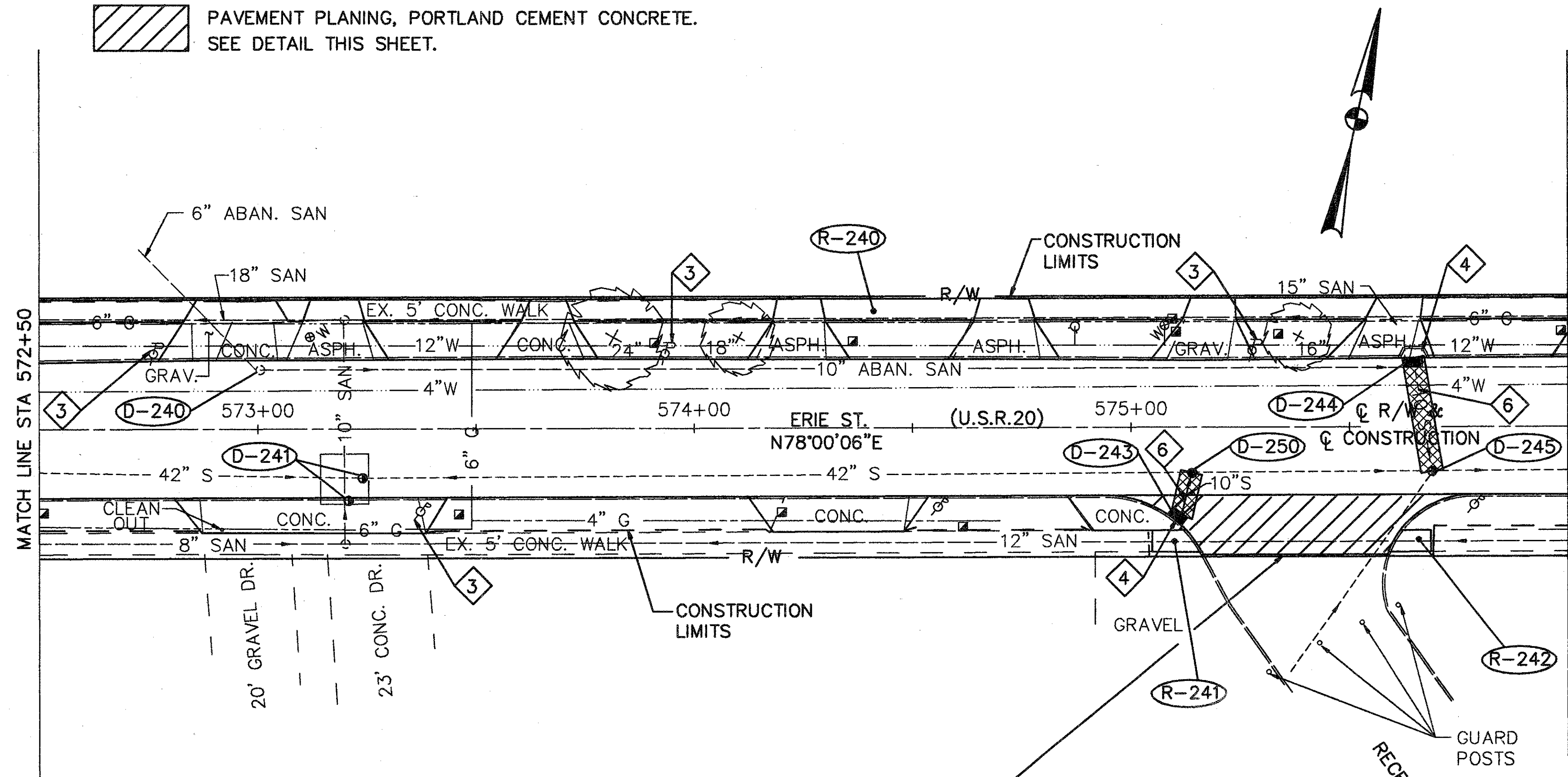
 PAVEMENT PLANING, PORTLAND CEMENT CONCRETE.
SEE DETAIL THIS SHEET.

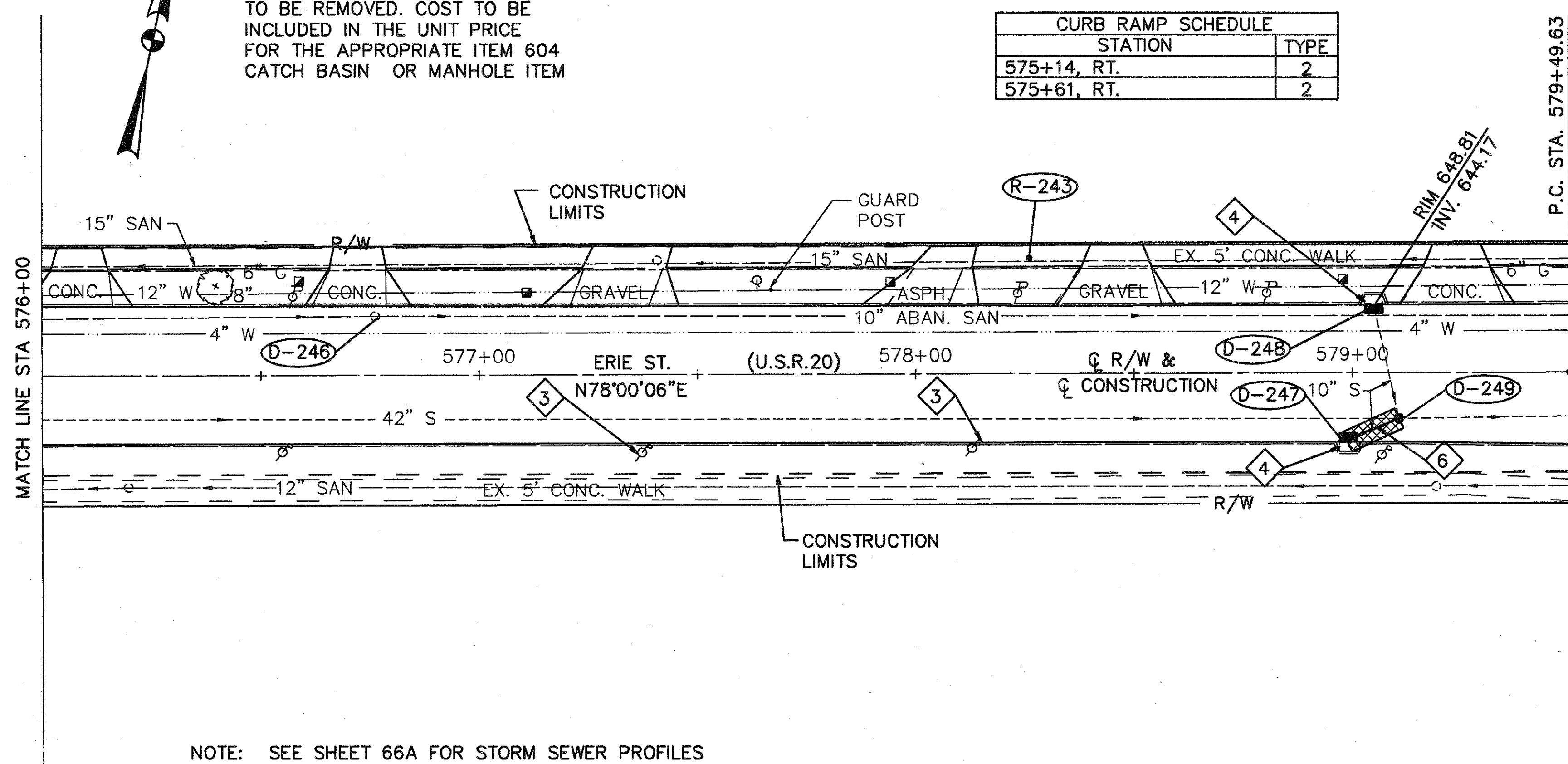


- DETAIL-RECREATION DR.*
- ① ITEM 404-1 1/4" ASPHALT CONCRETE, AC-20
 - ② ITEM 403-ASPHALT CONC., AC-20, SPOT LEVELING
 - ③ ITEM 254-PAV'T. PLANING, PORTLAND CEMENT CONC.
 - ④ ITEM 609-CURB, TYPE 6
 - Ⓐ EXIST. 7" PORTLAND CEMENT CONC. PAVEMENT
 - Ⓑ EXIST. AGGREGATE BASE
 - Ⓒ EXIST. CONC. CURB (TO BE REMOVED)
- * FOR QUANTITIES, SEE CALCULATIONS, SHEETS 10-14.

ROADWAY				202	608	608
REF.	FROM	TO	SIDE	WALK REMOVED SQ. FT.	4" CONCRETE WALK SQ. FT.	CURB RAMP, TYPE 2 SQ. FT.
R-240	572+50	576+00	LT.	1340		
R-241	575+14		RT.	30		30
R-242	575+61		RT.	30		30
R-243	576+00	579+50	LT.	1358		
TOTAL				2758	2688	60

- ③ TO BE RELOCATED BY OTHERS
- ④ EXISTING CATCH BASIN OR MANHOLE & APPURTENANCES TO BE REMOVED. COST TO BE INCLUDED IN THE UNIT PRICE FOR THE APPROPRIATE ITEM 604 CATCH BASIN OR MANHOLE ITEM
- ⑥ EXISTING PIPE TO BE REMOVED. COST TO BE INCLUDED IN THE UNIT PRICE BID FOR THE APPROPRIATE ITEM 603 12" CONDUIT, TYPE B, AS PER PLAN.

STATION	TYPE
575+14, RT.	2
575+61, RT.	2



NOTE: SEE SHEET 66A FOR STORM SEWER PROFILES

DRAINAGE				603	604	SPEC.	604	604	603	202	SPEC.	202	301
REF.	FROM	TO	SIDE	12" CONDUIT, TYPE B, 706.08, AS PER PLAN LIN. FT.	CATCH BASIN, NO. 3A, AS PER PLAN EACH	DRAINAGE STRUCTURE, MISC.: REGULATOR, CHAMBER ADJUSTED TO GRADE EACH	MANHOLE ADJUSTED TO GRADE, AS PER PLAN EACH	MANHOLE, NO. 5, AS PER PLAN EACH	12" CONDUIT, TYPE B, 706.02, AS PER PLAN LIN. FT.	MANHOLE ABANDONED, AS PER PLAN EACH	LOW STRENGTH MORTAR BACKFILL MATERIAL, CLASS LSM-50 CU. YD.	PAVEMENT REMOVED SQ. YD.	BITUMINOUS AGGREGATE BASE, AC-20 CU. YD.
D-240	573+00		18.5'LT.							1	2.8		
D-241	573+21	573+24			1								
D-243	575+10		20.2'RT.		1				11		5.2	6.2	2.1
D-244	575+65		14.4'LT.		1				26		9.5	14.5	4.8
D-245	575+69		10'RT.			1							
D-246	576+76		13.5'LT.							1	3.0		
D-247	578+99		14.4'RT.		1				12		5.6	6.7	2.3
D-248	579+05		14.4'LT.	8	1						6.0		
D-249	579+11		10.5'RT.				1						
D-250	575+14		10.5'RT.					1			2.8		
TOTAL				8	4	1	2	1	49	2	34.9	27.4	9.2

STA. 572+50 TO STA. 579+50

PR10718\SH113 2/15/93